



# New Hampshire Seacoast Greenway

Phase 1A and 1B  
Conceptual Signage Plan and Workbook



# Table of Contents

Project Introduction	1
How to Use this Guide	
Managing Organizations	
Acknowledgments	
East Coast Greenway	2
New Hampshire Seacoast Greenway	3
NHSG - Phase 1A and 1B	4
Graphic Standards	6
NHSG - Logo	
ECG - Signage	
Sign Types - Overview	8
Sign Types - Descriptions	14
Phase 1A and 1B Access Points	30
Locations and Signage Layout Suggestions	
Phase 1A and 1B - Interpretation	52
Phase 1A and 1B - Mile Markers	56
Phase 1A and 1B - Additional Signage Opportunities	57
Addendum - Installation and Footing Samples	59
Addendum - Signage Spread Sheet	60

# Project Introduction

In 2021, the Rockingham Planning Commission applied for and was awarded a technical assistance grant from the National Park Service, Rivers, Trails and Conservation Assistance program (RTCA). The team decided to focus on three main topics, one of which was a conceptual signage plan. In addition to the Rockingham Planning Commission and RTCA, input on the plan was received from community charrettes that included multiple pro bono landscape architects and designers, led by Bob White (GPI/Greenman-Pedersen, Inc.), a subcommittee of local signage enthusiasts, and the New Hampshire Seacoast Greenway Alliance (NHSGA). Much of the planning work had been laid out for the team with work completed since 2009 by the NHSG Advisory Committee.

## How to Use this Guide

This conceptual plan and workbook are intended to be used as a tool for the development of signage design and implementation along the New Hampshire Seacoast Greenway. The ideas illustrated here are meant to facilitate ongoing conversation among stakeholders in collaboration with local designers, fabricators, and contractors to create long-lasting trail wayfinding. These are not final designs. This conceptual plan and workbook offers space to make notes regarding, designs, materials, costs, fabrication methods and suppliers. This document focuses on Phase 1A and 1B and can set a foundation for work on future phases.

## Managing Organization

New Hampshire Seacoast Greenway Alliance  
Rockingham Planning Commission  
New Hampshire Department of Transportation  
East Coast Greenway

## Acknowledgments

National Park Service – Rivers, Trails, and Conservation Assistance Program  
Multiple pro bono designers from the community



# East Coast Greenway

“The East Coast Greenway is a walking and biking route stretching 3,000 miles from Maine to Florida, connecting our nation’s most populated corridor. The East Coast Greenway is designed to transform the 15 states and 450 communities it connects through active and healthy lifestyles, sustainable transportation, community engagement, climate resilience, tourism, and more. The Greenway offers a safe place for bicyclists, walkers, runners, and more – of all ages and abilities – to commute, exercise, and visit new destinations.” (Quote & Map: East Coast Greenway)



Reference:  
<https://www.greenway.org/about/the-east-coast-greenway>



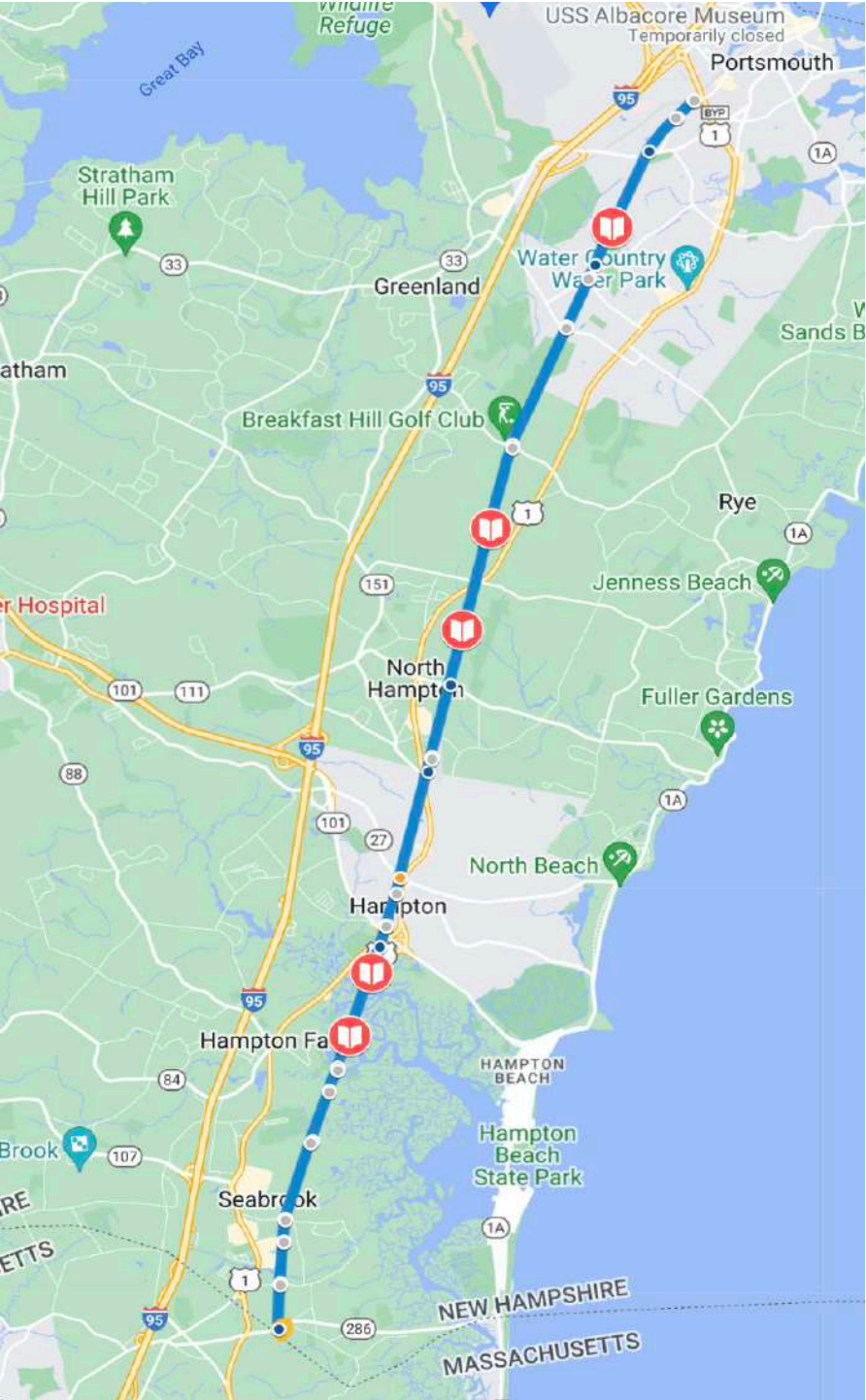
Reference:  
<https://www.greenway.org/route-map>, Retrieved 1/30/23

# New Hampshire Seacoast Greenway

The New Hampshire Seacoast Greenway (NHSG) will be New Hampshire’s segment of the East Coast Greenway (ECG). The trail is being built on the abandoned Hampton Branch railroad corridor, also known as the Eastern Railroad corridor, owned by the state of New Hampshire. The NHSG will be a community asset offering a safe place for community members to exercise, learn to ride a bike, enjoy nature, or simply get to where they need to go without a car.

## Phases of NHSG

The design and implementation of the trail will be undertaken in three phases. The first phase of the NHSG, extending from Portsmouth to Hampton, is in design as of late 2020. The second phase will be in Seabrook and will extend from the Massachusetts state line to the Hampton Falls town line. At the state line the trail will connect to the Old Eastern Marsh Trail and continue the Clipper City Rail Trail through Salisbury and Newbury Port. Phase 3 will cross Hampton and Hampton Falls Marsh, covering the length of the corridor through Hampton Falls and the southern part of Hampton.





# New Hampshire Seacoast Greenway

## Phase 1A and 1B

### Project Description

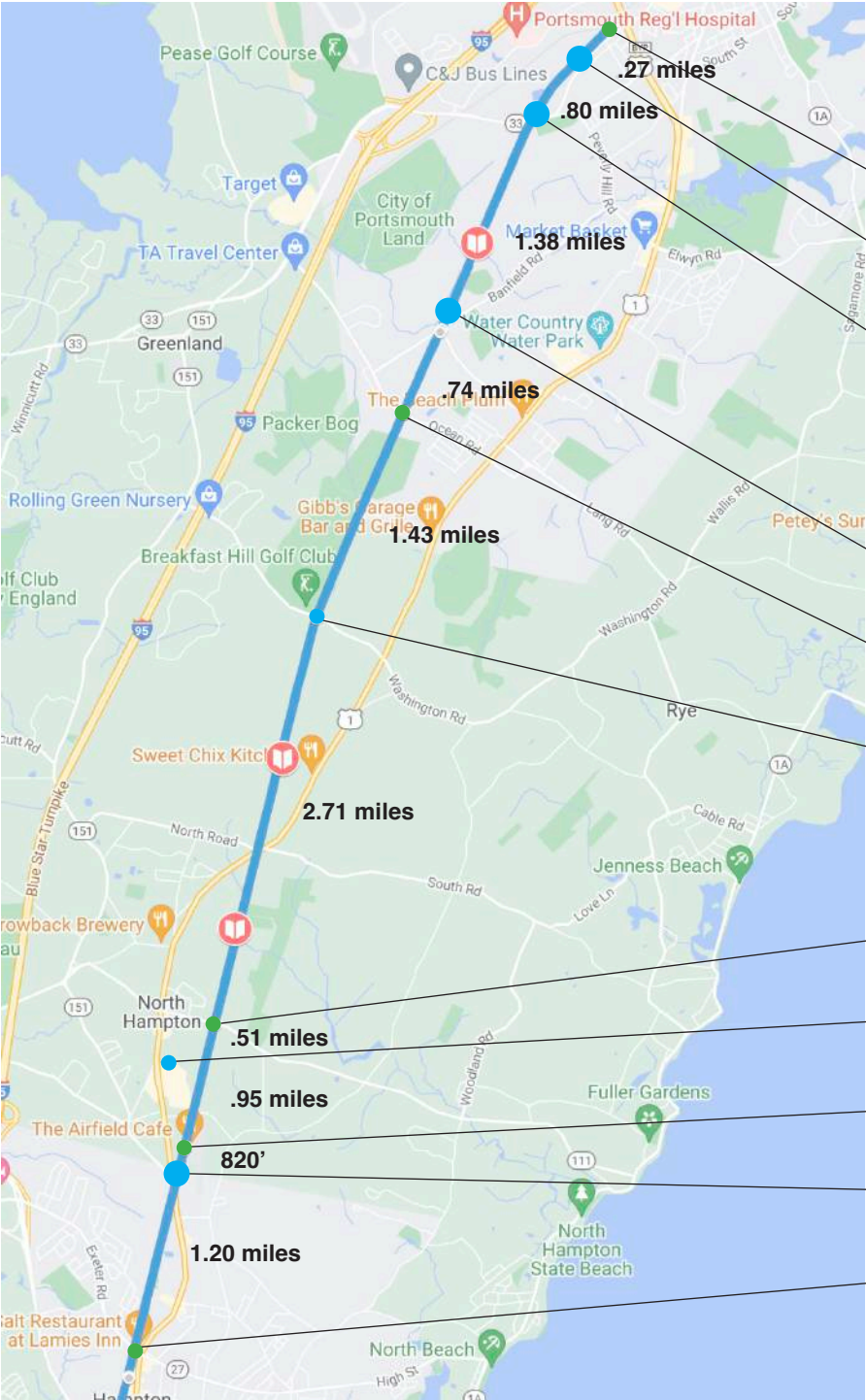
Phase 1A of the NHSG is 8 miles from North Hampton to Portsmouth, with design and permitting progress and construction set for 2023-2024. Phase 1B is 1.6 miles with design and permitting in progress and construction set for 2024, Phase 1B is the Hampton portion of the trail.

Trail Access and specific amenities vary by site

- Major Hubs
  - Parking
  - Shelter
  - Seating
  - Limited restrooms/porta-johns
  - Limited WIFI
  - Limited water
  - Dog sanitary facilities
  - Bike parking and maintenance at some locations
  - Trail information
- Minor Hubs
  - Limited Parking
  - Seating
  - Trail information
- Walk-on, Bike-on Access
  - Basic Trail Information

# NHSG Phase 1A and 1B

## Trail Access Locations



# NHSG - Graphic Standards - Logo

## Color Palette

C=0, Y=0, M=0, K=100

C=91, Y=58, M=10, K=1

C=67, Y=4, M=100, K=0

C=72, Y=24, M=76, K=24

C=68, Y=23, M=71, K=48

C=0, Y=0, M=0, K=0

C=100, Y=0, M=0, K=0



## Black & White



## One Color



## Font - Arial Bold

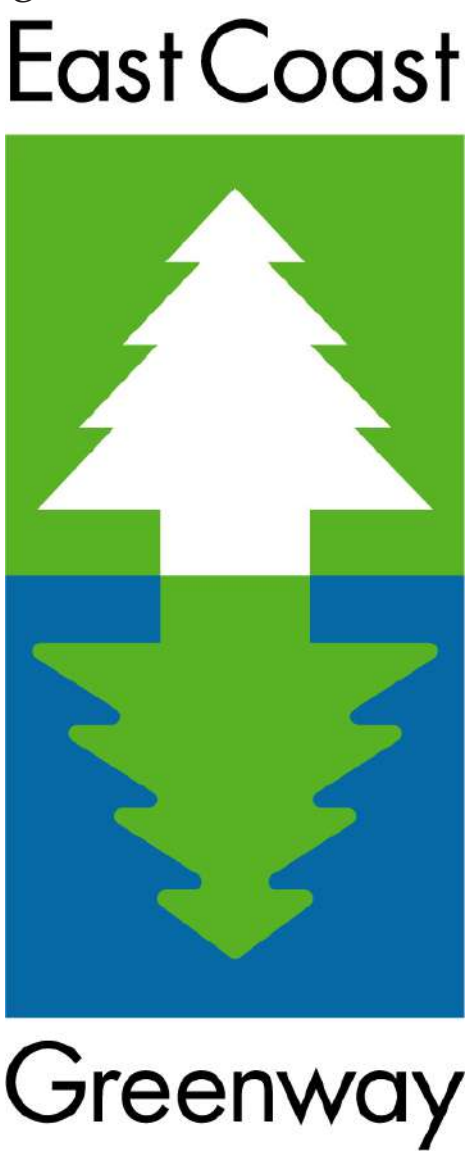
ABCDEFGHIJKLMNOPQRSTUVWXYZ

abcdefghijklmnopqrstuvwxyz

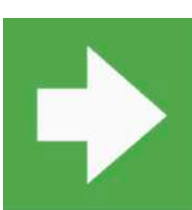
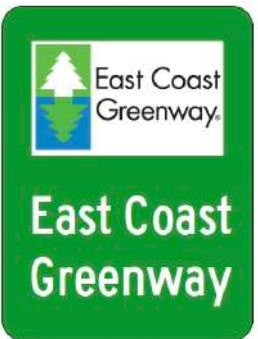
1234567890

# ECG - Graphic Standards - Trail Signs

## Standard ECG Route Signs



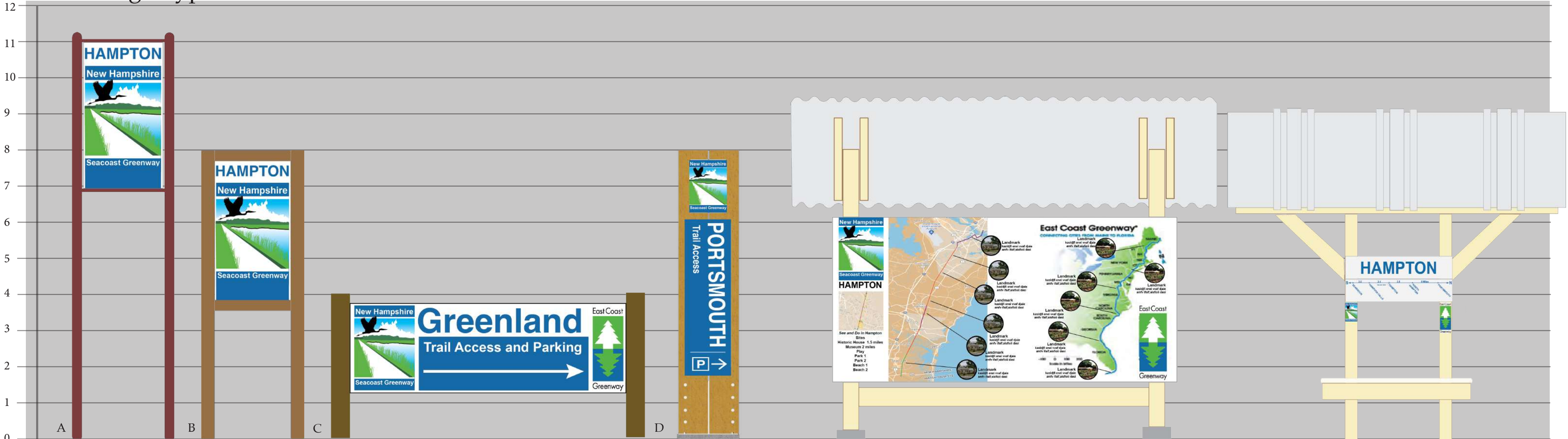
## MUTCD Compliant ECG Directional Arrows



Reference:  
East Coast Greenway Alliance, Trail Signage Manual v.1.3, June 2016



# NHSG - Sign Types - Overview

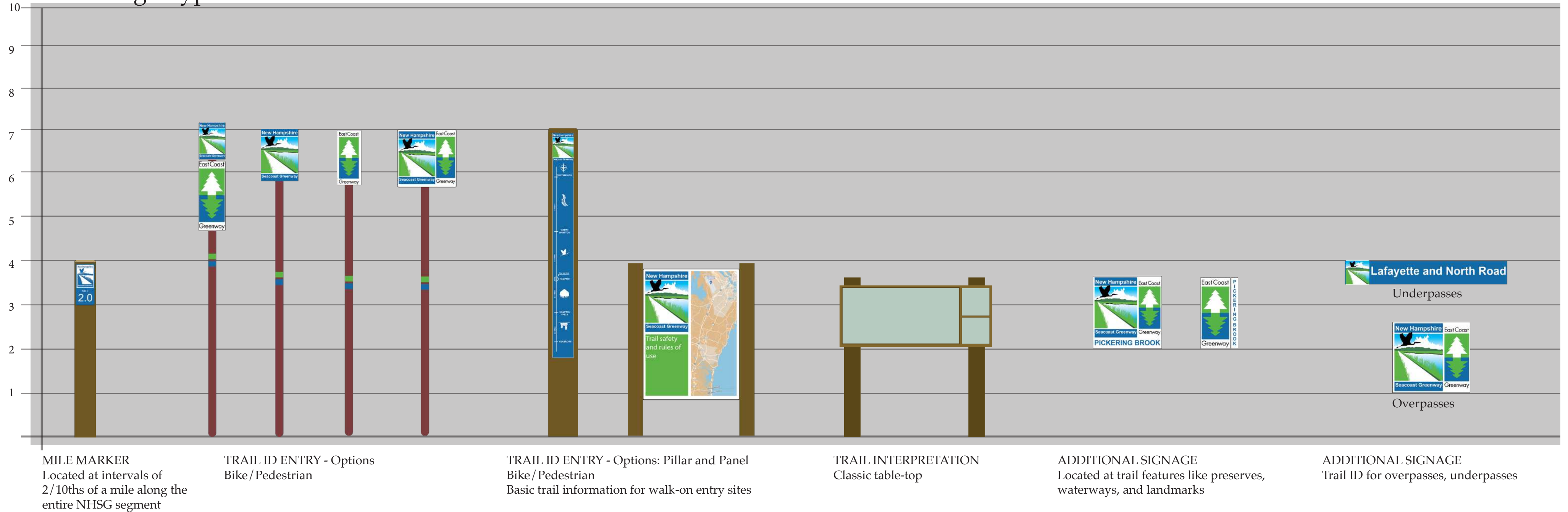


- TRAIL ID ENTRY  
Vehicle entry, minor and major hub - Options
- A. Tubular steel frame and posts
  - B. Wood structure
  - C. Low profile wood or tubular steel
  - D. Pillar with mount, timbers, brackets, and concrete

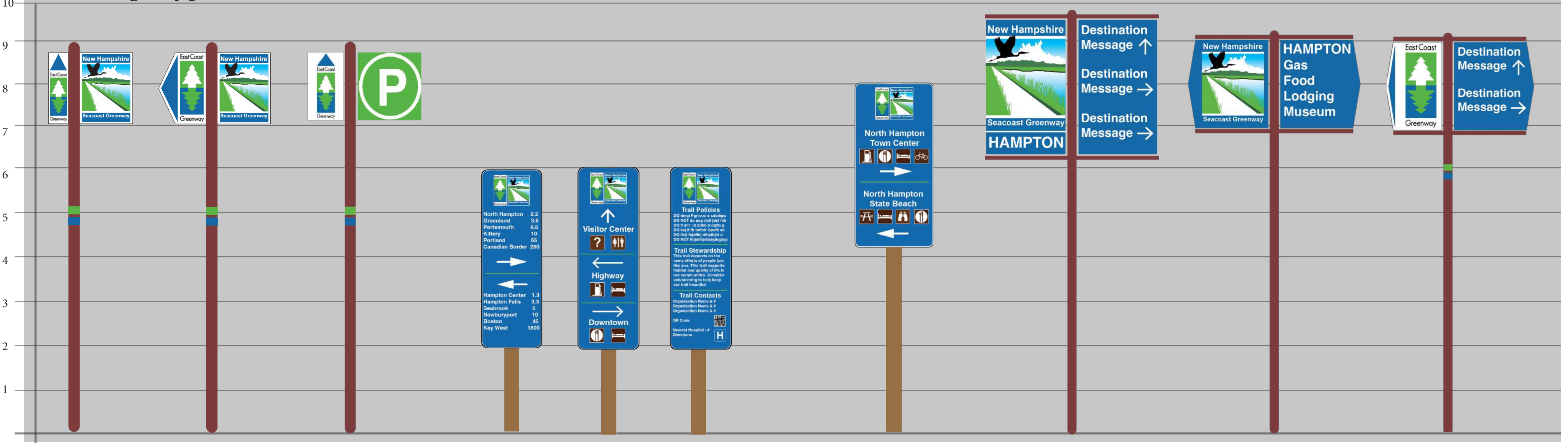
KIOSK - LARGE  
Located at major hubs with, ECG map, NHSG Map, Segment map with distances, local area information

KIOSK - SMALL  
Located at minor hubs with NHSG map, segment map with distances

## NHSG - Sign Types - Overview



NHSG - Sign Types - Overview



TRAIL ID APPROACH  
Vehicle entry ahead  
Trail access ahead

TRAIL ID PARKING  
Located at major hubs to  
help direct vehicles

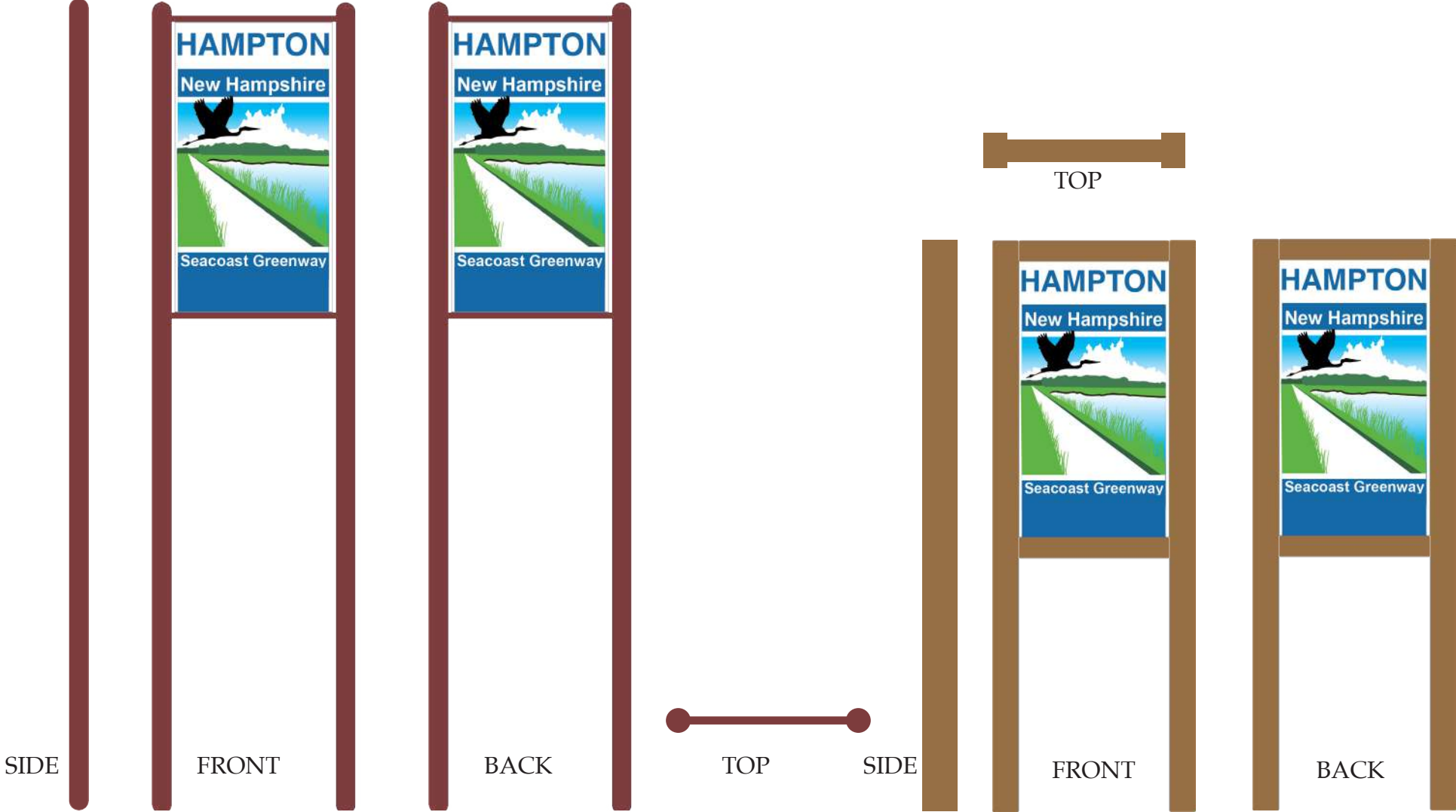
WAYFINDING - Small scale options, pedestrian scale  
Located at Major Hubs for local area wayfinding

WAYFINDING - Large scale options to be read from vehicles  
Located at Major Hubs for local area wayfinding



# NHSG - Sign Types - Descriptions

## Entry for Vehicles - Minor Hubs

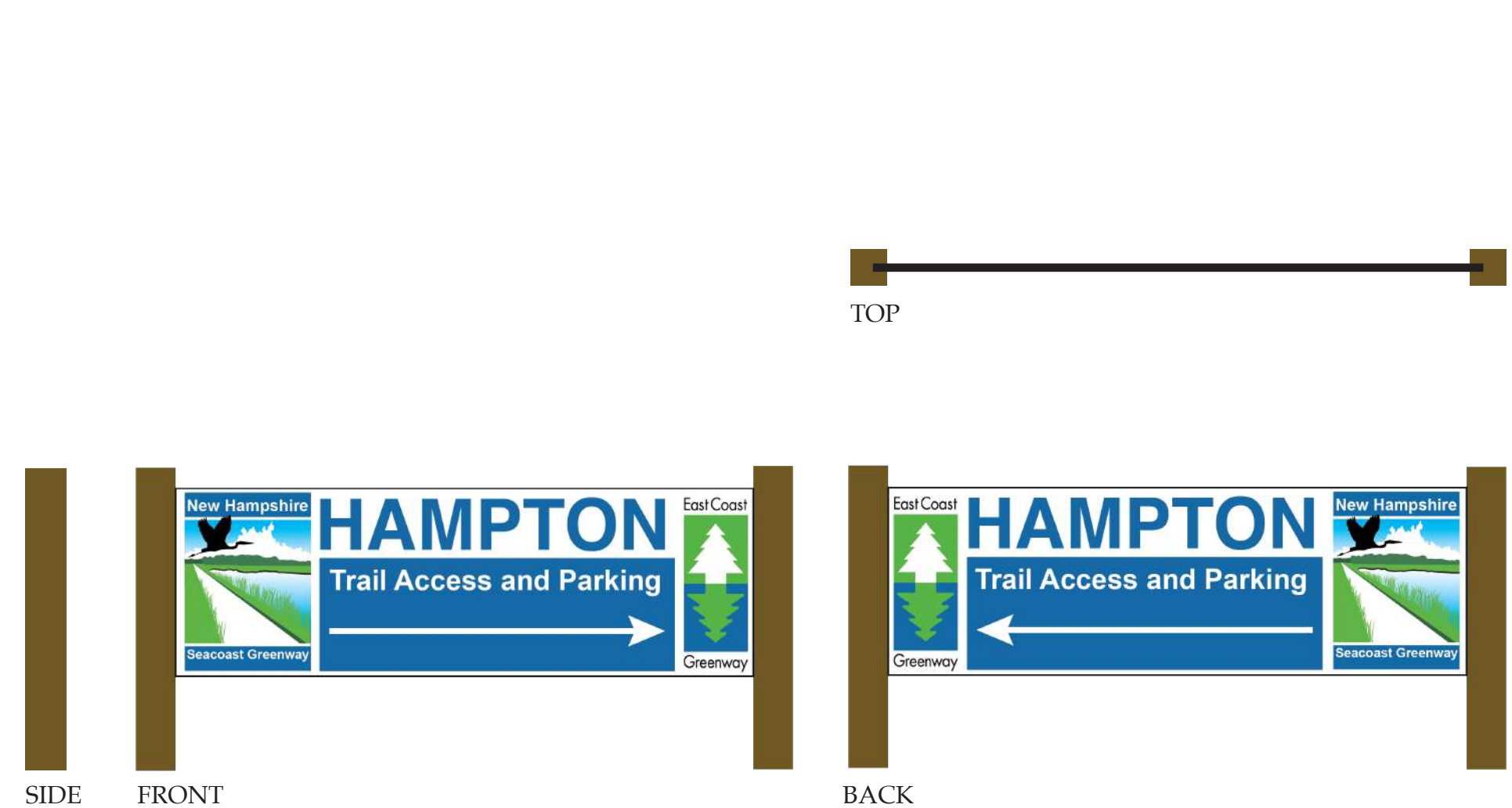


Notes:  
Description/Size  
Quantity  
Materials  
Costs  
Suppliers & Fabricators

Notes:  
Description/Size  
Quantity  
Materials  
Costs  
Suppliers & Fabricators

# NHSG - Sign Types - Descriptions

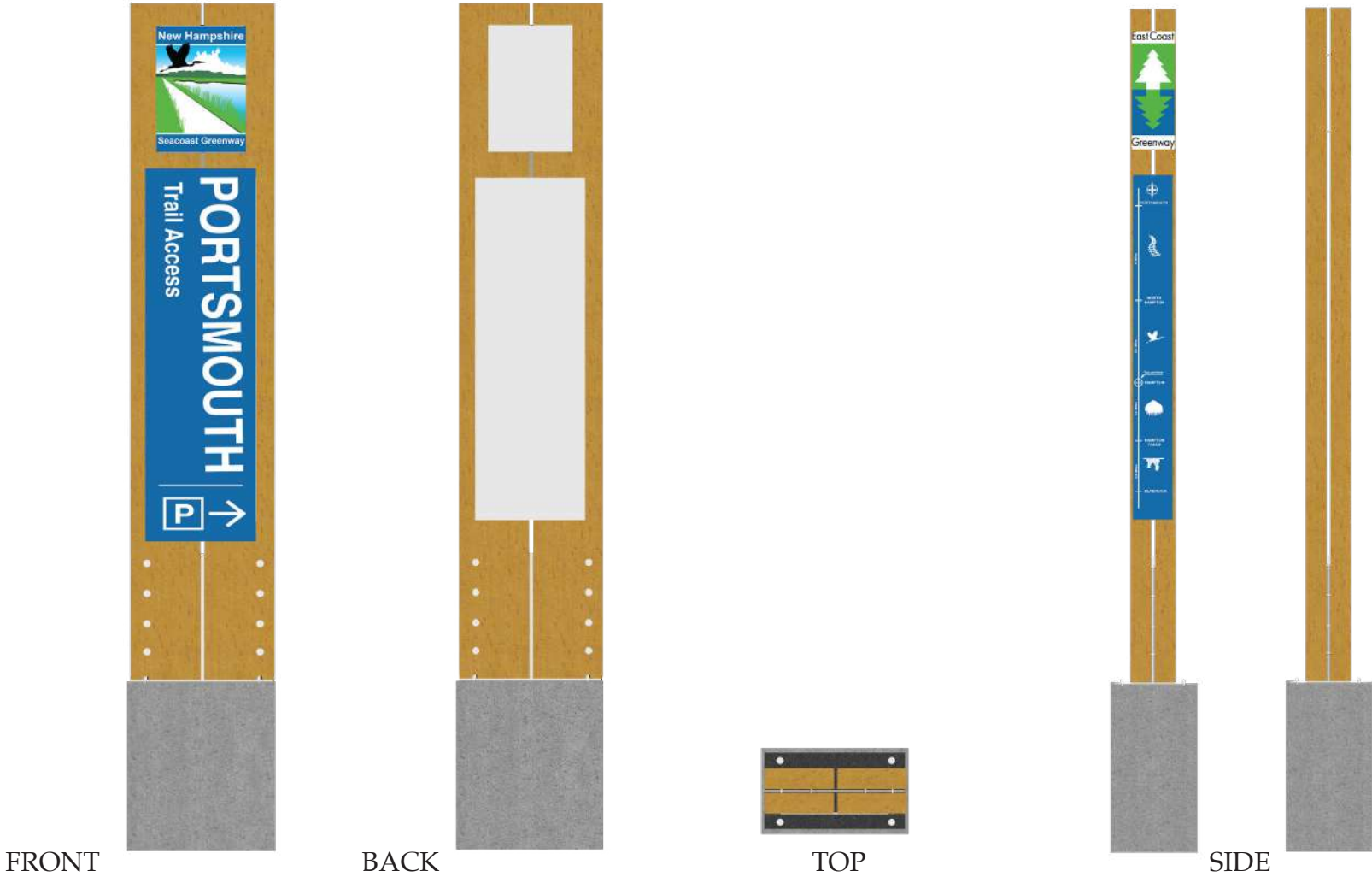
## Entry for Vehicles - Major Hubs



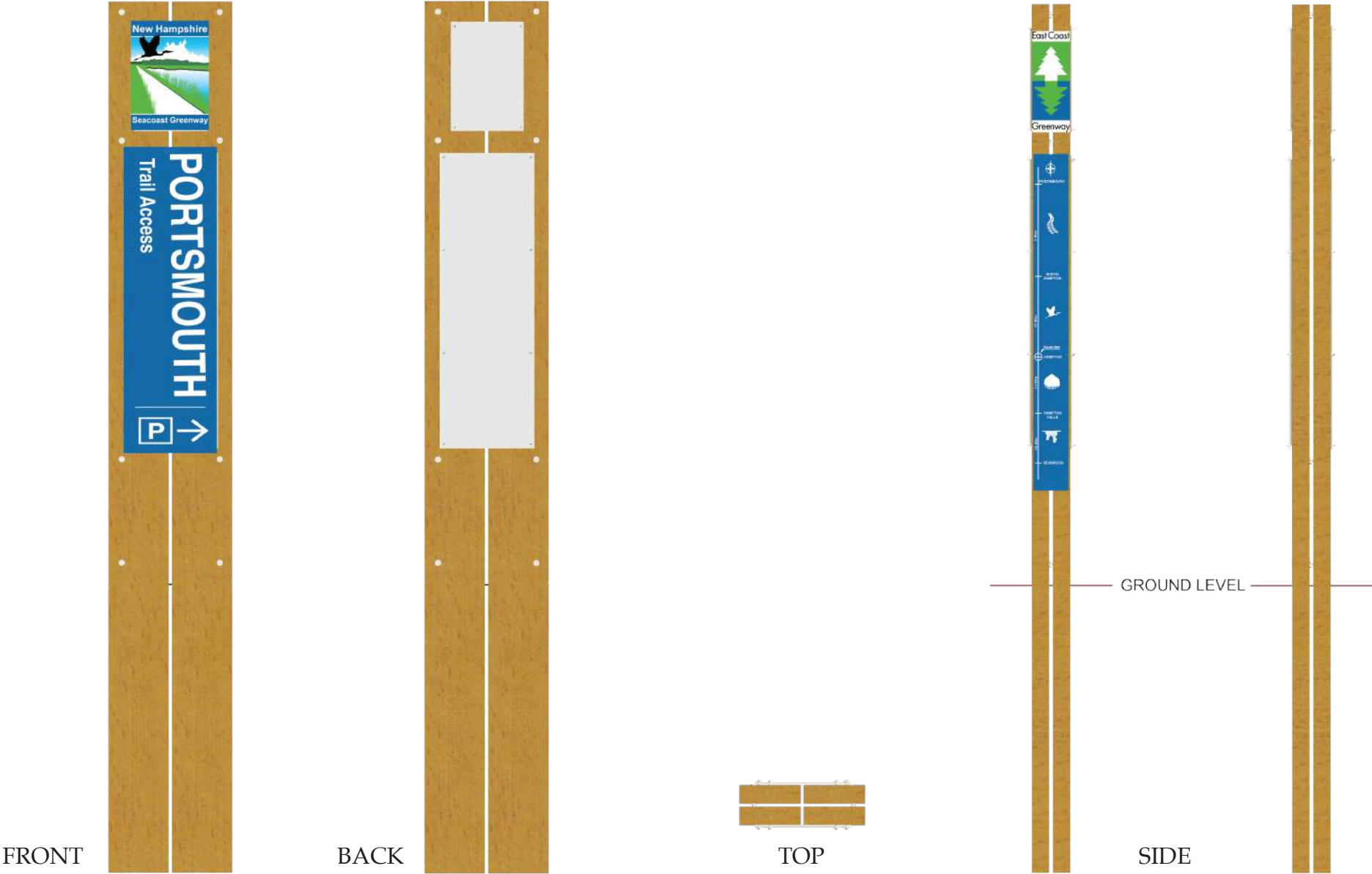
Notes:  
Description/Size  
Quantity  
Materials  
Costs  
Suppliers & Fabricators

# NHSG - Sign Types - Descriptions

## Entry for Vehicles - Pillar options mounted and grounded



Notes:  
Description/Size  
Quantity  
Materials  
Costs  
Suppliers & Fabricators

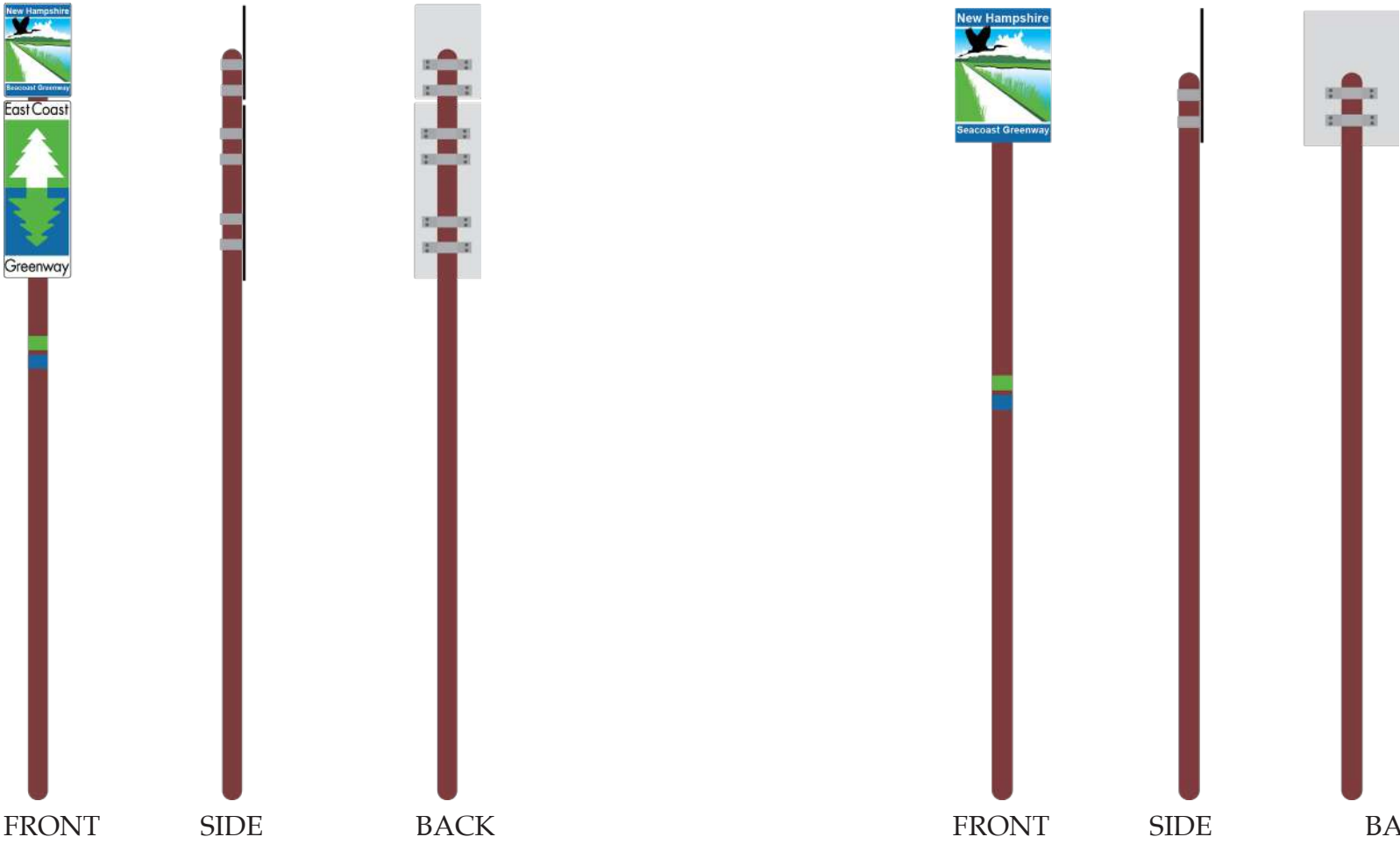


Notes:  
Description/Size  
Quantity  
Materials  
Costs  
Suppliers & Fabricators

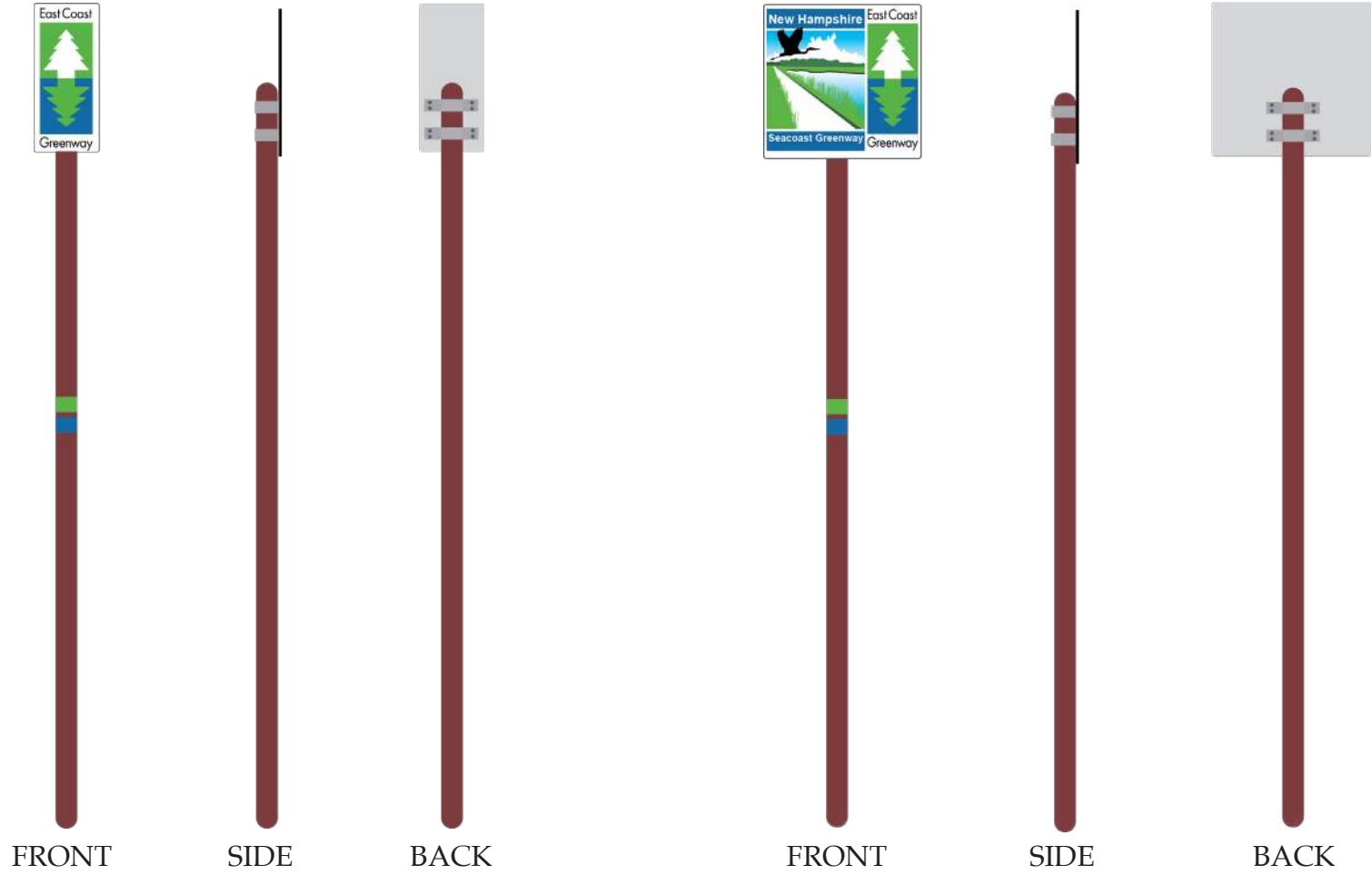


# NHSG - Sign Types - Descriptions

## Entry Bikes and Pedestrians - Multiple Options



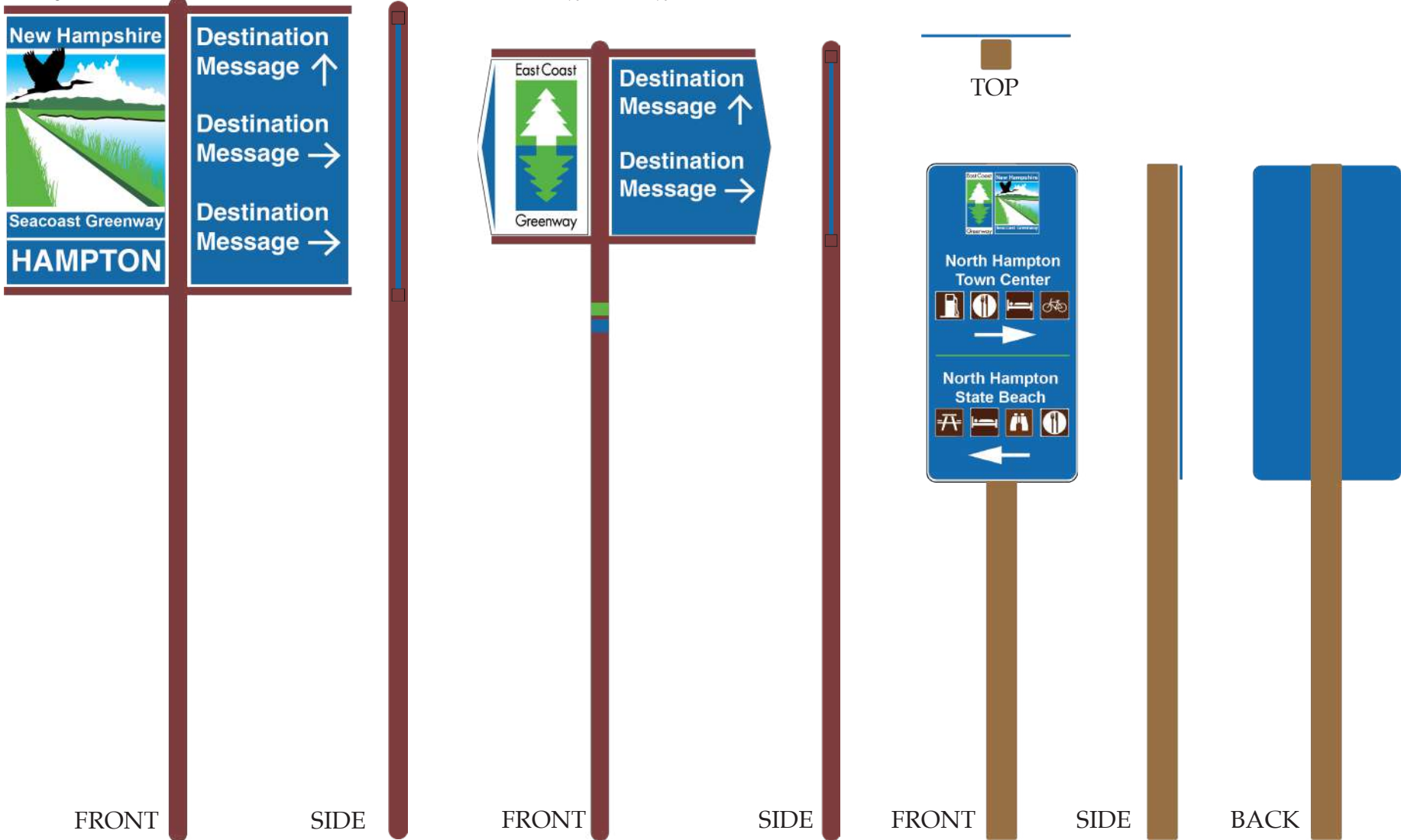
Notes:  
Description/Size  
Quantity  
Materials  
Costs  
Suppliers & Fabricators



Notes:  
Description/Size  
Quantity  
Materials  
Costs  
Suppliers & Fabricators

# NHSG - Sign Types - Descriptions

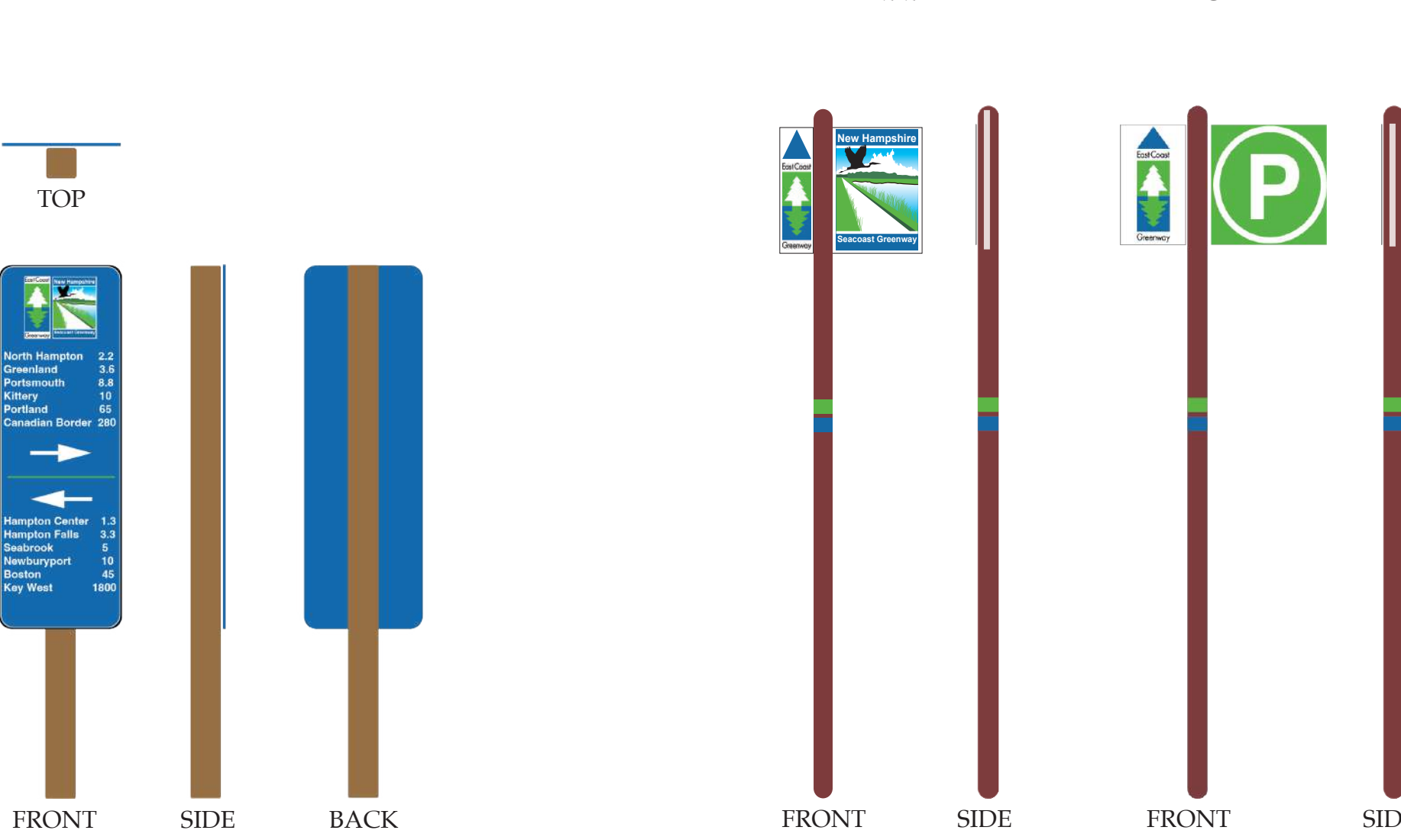
## Wayfinding for Local Areas - Multiple Options



Notes:  
Description/Size  
Quantity  
Materials  
Costs  
Suppliers & Fabricators

# NHSG - Sign Types - Descriptions

## Vehicle Approach and Parking



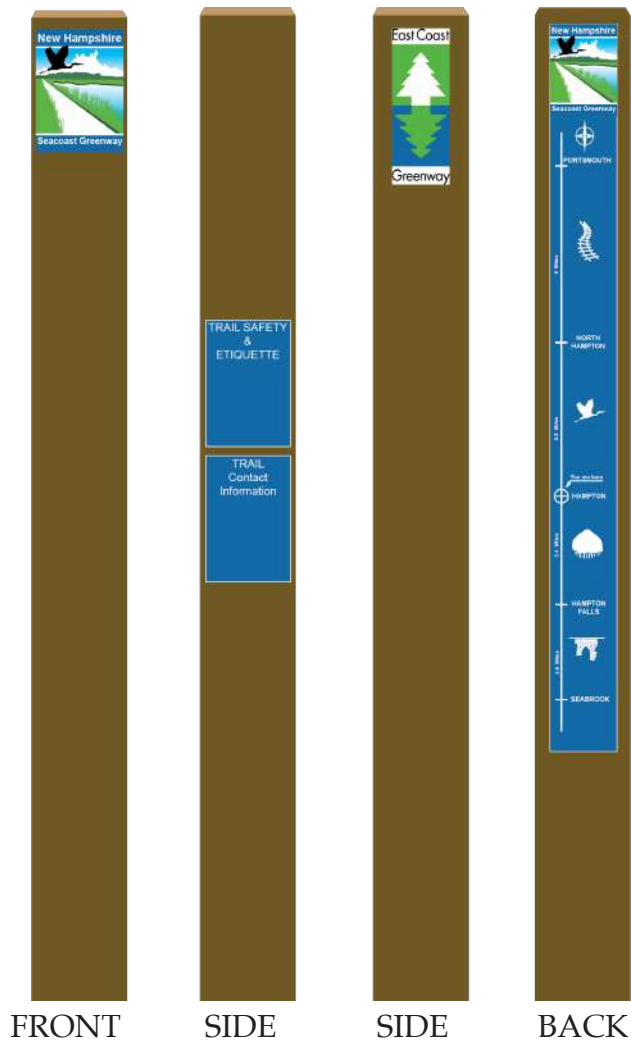
Notes:  
Description/Size  
Quantity  
Materials  
Costs  
Suppliers & Fabricators

Notes:  
Description/Size  
Quantity  
Materials  
Costs  
Suppliers & Fabricators



# NHSG - Sign Types - Descriptions

## Information - Basic Information for Walk-on Access Sites



Basic information format suggestions

SIDE 1 - Trail ID

SIDE 2 - Safety, Trail Etiquette, Policies, and Contact Information

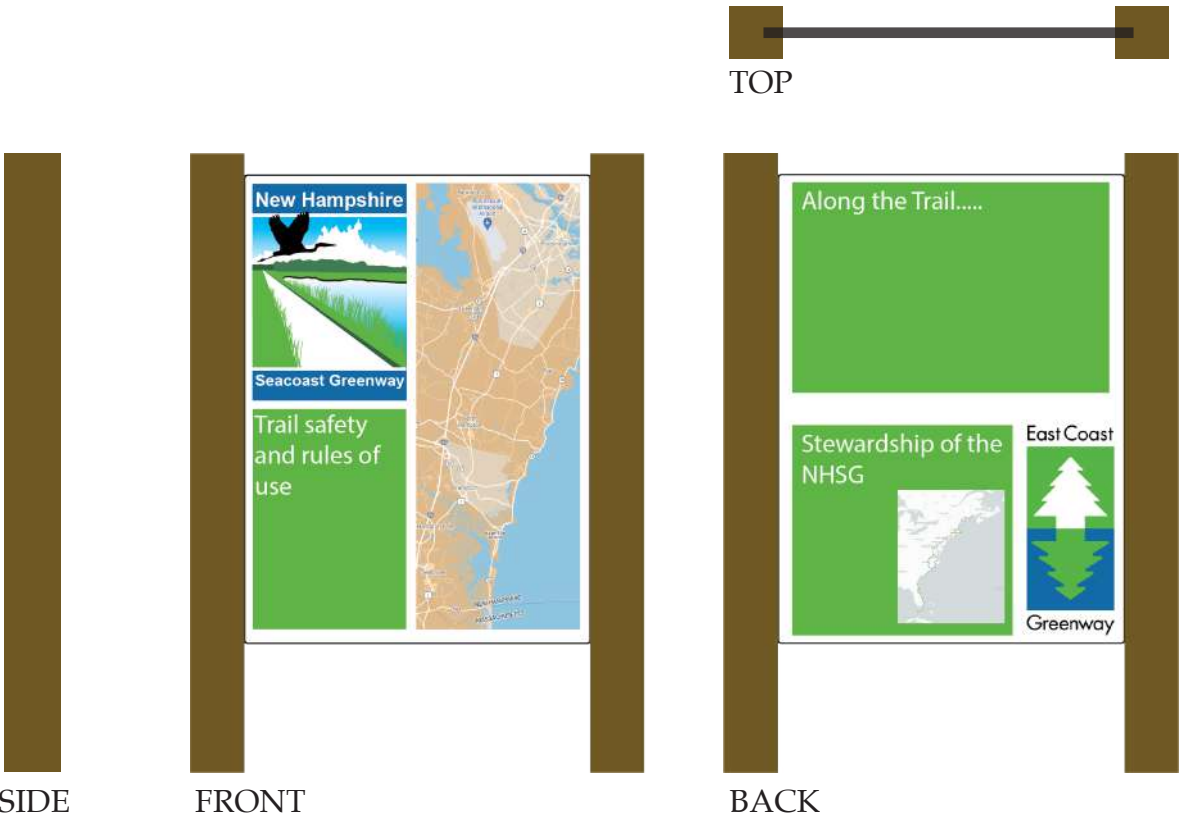
SIDE 3 - ECG ID

SIDE 4 - Locator Map, including: *You Are Here*, indicator with distances between access points. Optional icons reinforce site specific nature of the trail and interpretive opportunities.

Notes:  
Description/Size  
Quantity  
Materials  
Costs  
Suppliers & Fabricators

# NHSG - Sign Types - Descriptions

## Information - Basic Information for Walk-on Access Sites



Basic information format suggestions

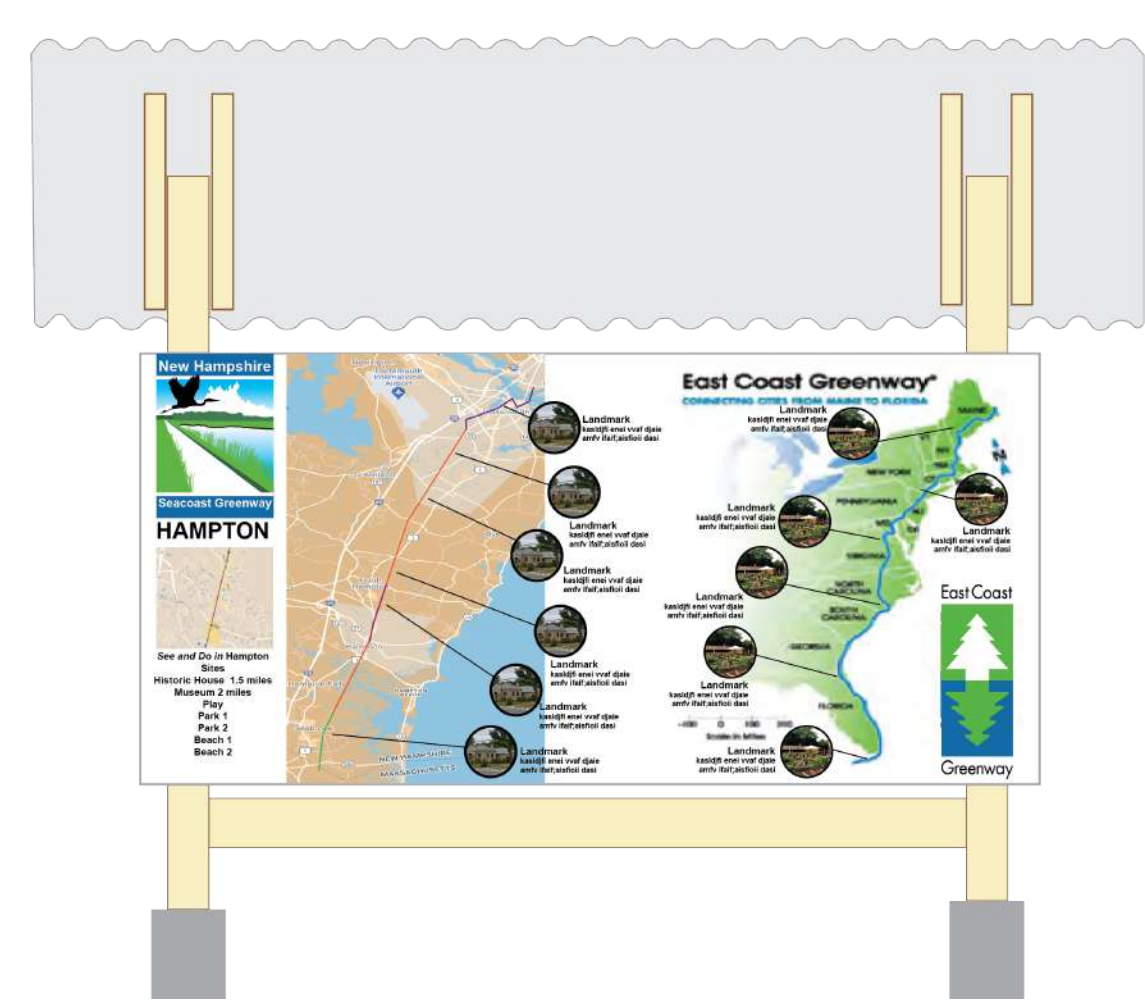
SIDE 1 - Trail ID  
Safety and Contact Information  
NHSG Map  
Trail Etiquette

SIDE 2 - ECG System Map  
ECG ID  
Stewardship and Maintenance  
Additional Information

Notes:  
Description/Size  
Quantity  
Materials  
Costs  
Suppliers & Fabricators

NHSG - Sign Types - Descriptions

Kiosks - Large



The diagram shows a large kiosk with two vertical yellow posts. A horizontal sign panel is mounted between them. The panel is divided into two sections: 'SIDE ONE' on the left and 'SIDE TWO' on the right. 'SIDE ONE' features a map of New Hampshire with a green trail line and a list of landmarks. 'SIDE TWO' features a map of the East Coast Greenway with a list of landmarks. The sign panel is white with a blue border and a green tree icon in the bottom right corner.

Kiosk information format suggestions

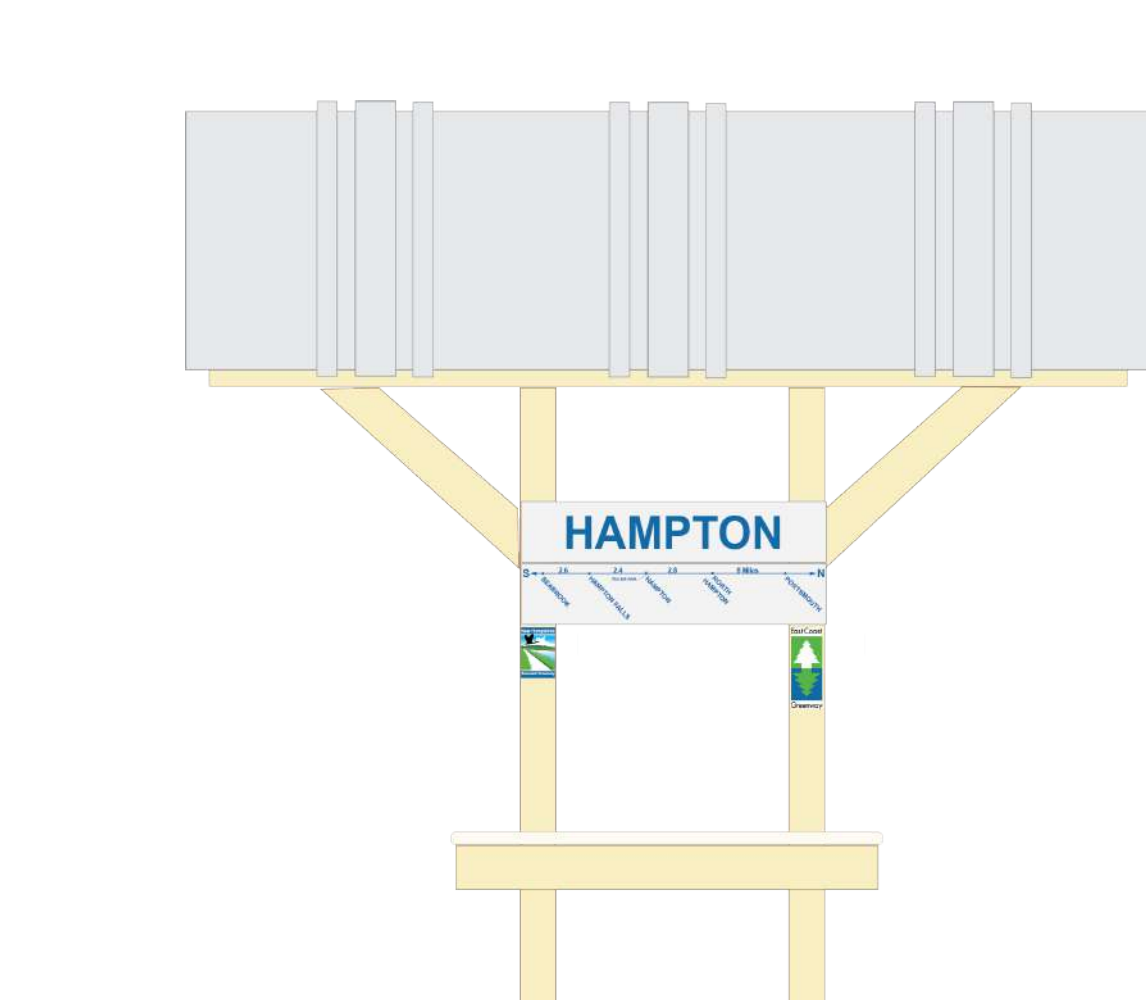
SIDE 1 - Trail ID  
NHSG Trail Map  
Local Community Map  
ECG ID  
ECG System Map

SIDE 2 - Safety and Contact Information  
Trail Etiquette  
Stewardship and Maintenance  
Interpretation  
Additional Information

Notes:  
Description/Size  
Quantity  
Materials  
Costs  
Suppliers & Fabricators

NHSG - Sign Types - Descriptions

Kiosks Small



The diagram shows a small kiosk with two vertical yellow posts. A horizontal sign panel is mounted between them. The panel is divided into two sections: 'SIDE ONE' on the left and 'SIDE TWO' on the right. 'SIDE ONE' features a map of New Hampshire with a green trail line and a list of landmarks. 'SIDE TWO' features a map of the East Coast Greenway with a list of landmarks. The sign panel is white with a blue border and a green tree icon in the bottom right corner.

Kiosk information format suggestion

SIDE 1 - Trail ID  
ECG ID  
Town Name  
Linear Locator Map

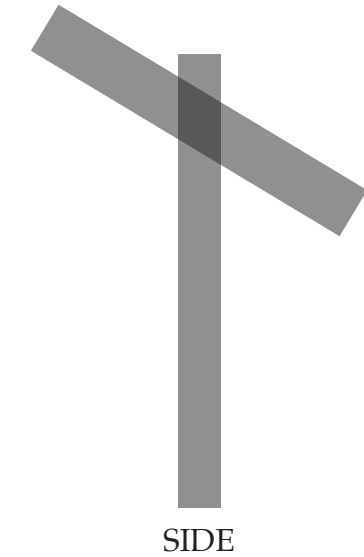
SIDE 2 - Trail ID  
ECG ID  
Town Name  
Linear Locator Map  
Safety and Contact Information

Notes:  
Description/Size  
Quantity  
Materials  
Costs  
Suppliers & Fabricators

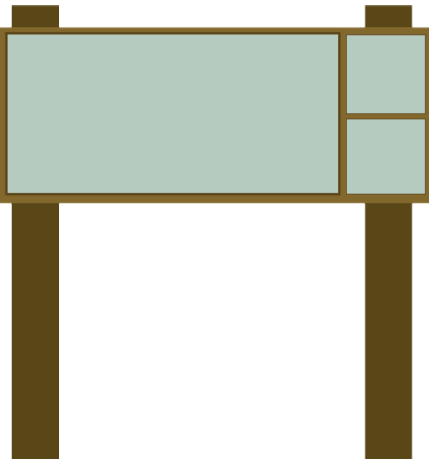


# NHSG - Sign Types - Descriptions

## Interpretation



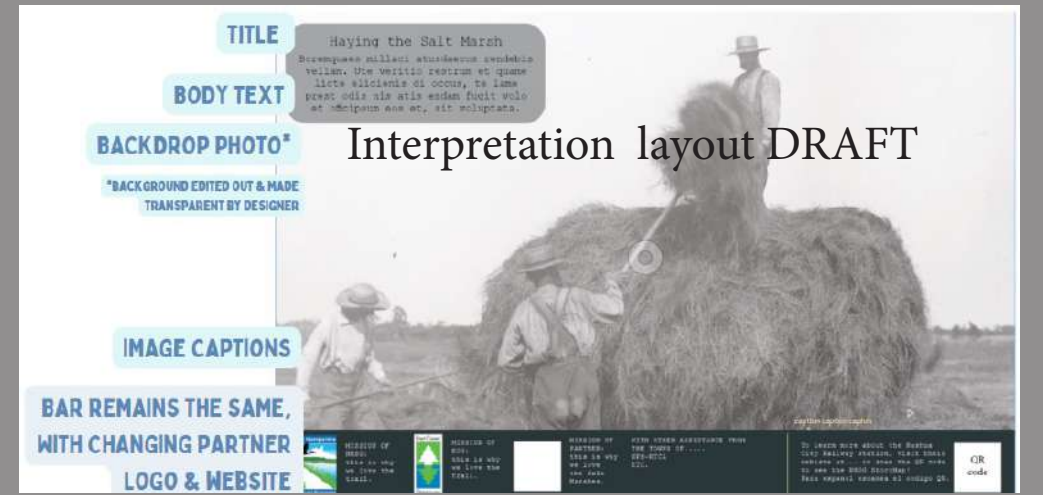
SIDE



FRONT



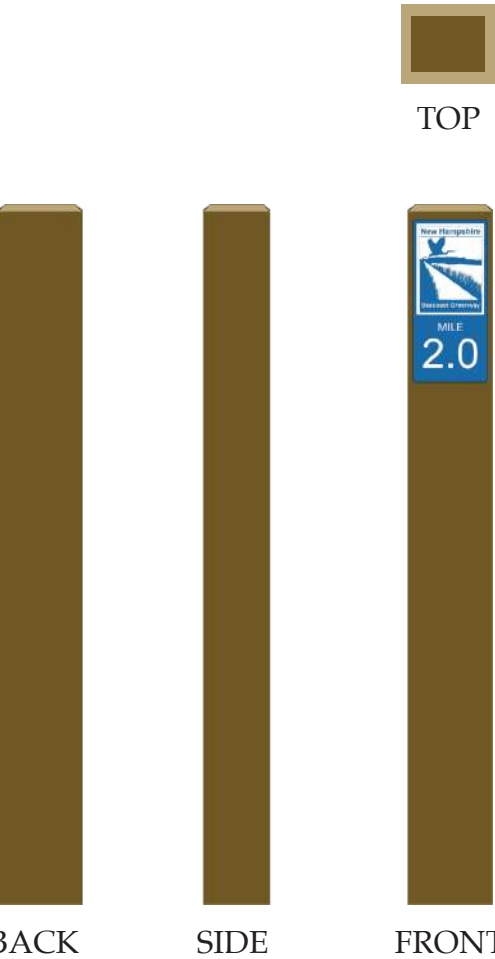
TOP



Notes:  
Description/Size  
Quantity  
Materials  
Costs  
Suppliers & Fabricators

# NHSG - Sign Types - Descriptions

## Mile Markers



Notes:  
Description/Size  
Quantity  
Materials - 4 x 6” Timber  
Costs  
Suppliers & Fabricators

NHSG - Sign Types - Descriptions

Additional Signage



TRAIL ID + WATERWAY  
NAME



TRAIL ID +  
FEATURE NAME

Notes:  
Description/Size  
Quantity  
Materials  
Costs  
Suppliers & Fabricators

NHSG - Sign Types - Descriptions

Additional Signage



TRAIL ID  
OVERPASS AS SEEN BY VEHICLES



TRAIL ID  
UNDERPASS WITH DISTANCE TO NEXT ACCESS & NAME  
OF ROADWAY

Notes:  
Description/Size  
Quantity  
Materials  
Costs  
Suppliers & Fabricators



# NHSG - PHASE 1A & 1B Access Points

## BARBERRY LANE - Walk-on/Bike-on

### Site Characteristics

- Located in Portsmouth
- Intersecting Road at Barberry Lane, at grade crossing
- Residential Neighbors to the east
- Near industrial park & office space to the west and some dining options to the north following Islington St.
- Phase IA trail terminus



Existing Conditions - Plan



Existing Conditions - Perspective



Existing Conditions - Perspective

### Signs Types

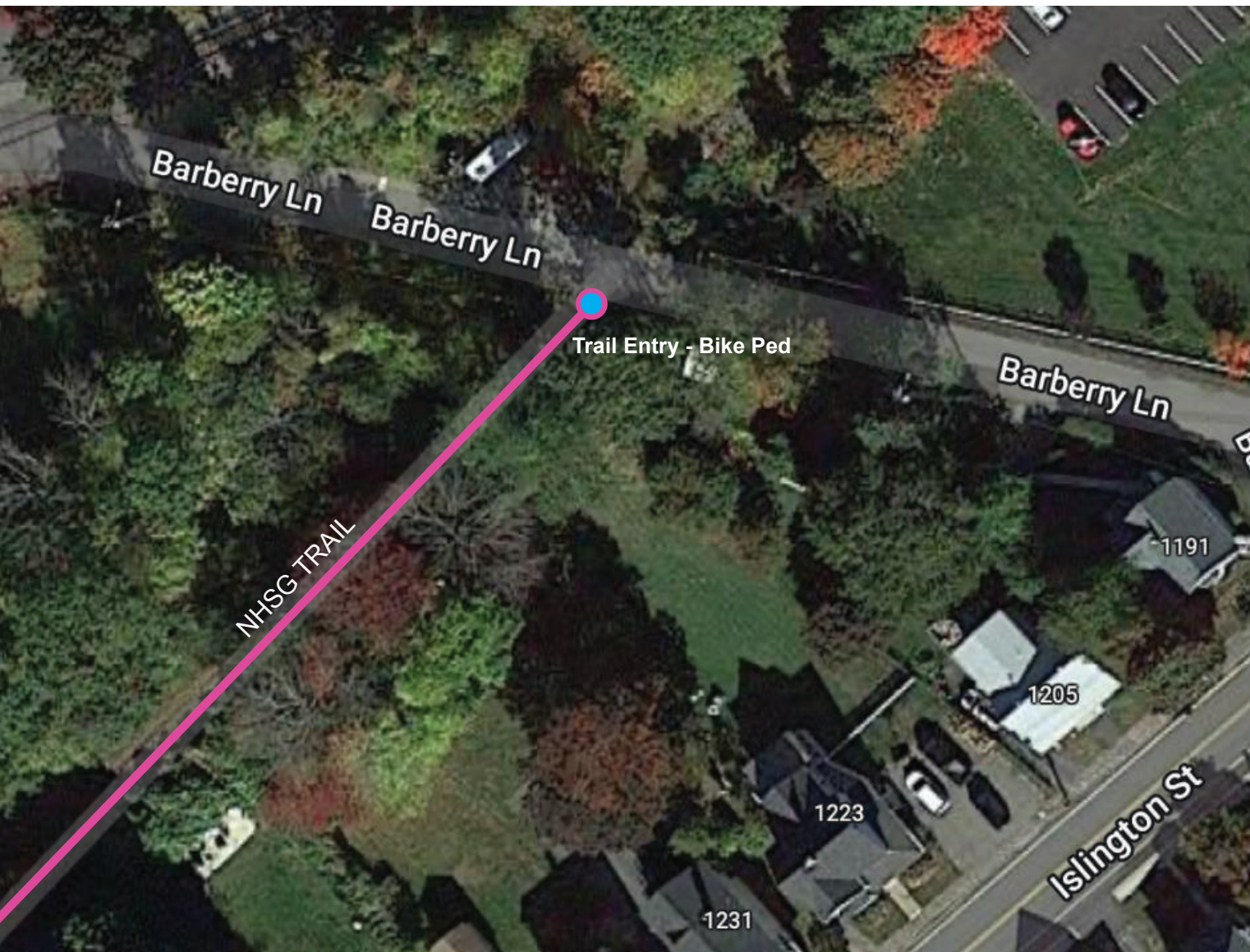


Trail Entry - Bike/Ped

# BARBERRY LANE

## Site Sign Layout

Sign Locations ●



Site Notes:  
Terminus of Phase 1A



# NHSG - PHASE 1A & 1B Access Points

## BORTHWICK AVE & EILEEN DONDERO FOLEY AVE- Major Hub

### Site Characteristics

- Located in Portsmouth
- Adjacent public land owned by the city
- Residential neighbors to the east
- Near industrial park & office space to the west and some dining options to the north following Islington St.
- Included in the City Ped/ Bike Plan
- A major trailhead, located on a main road about 0.33 miles from the trail



Existing Conditions - Plan

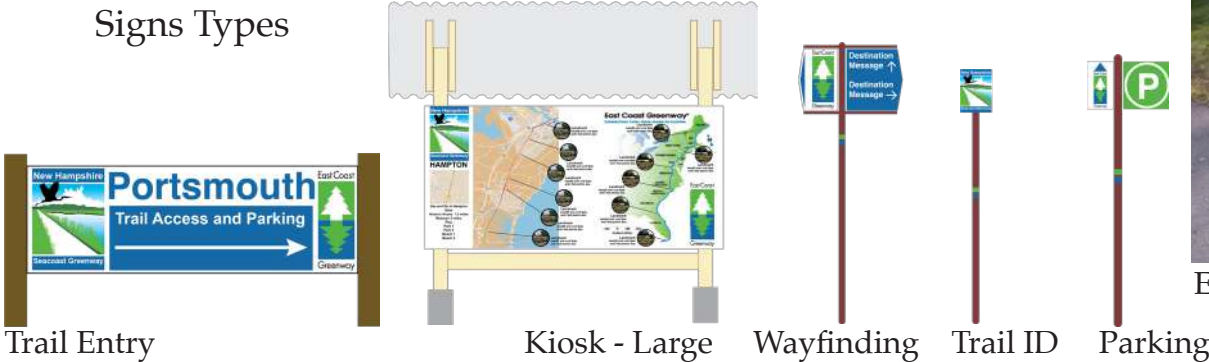


Existing Conditions - Perspective



Existing Conditions - Perspective

### Signs Types



# BORTHWICK AVE & EILEEN DONDERO FOLEY AVE

## Site Sign Layout

### Sign Locations



Site Notes:  
Proposed trailhead site is .33 miles from trail.

Draft site plan created during Fall 2022 community event - does not represent final design.



# NHSG - PHASE 1A & 1B Access Points

## STUMP DUMP / NHSR 33 / GREENLAND RD - Major Hub

### Site Characteristics

- Located in Portsmouth

- Intersecting roads, Middle Road & NH33. Separated grade. Trail under highway.

- Adjacent public land owned by the City of Portsmouth & State of NH

- Surrounded by residential neighbors

- Minimal retail development nearby, near to industrial parks

- Portsmouth City Ped / Bike Plan recommending significant trailhead facilities and skate-park at this location.

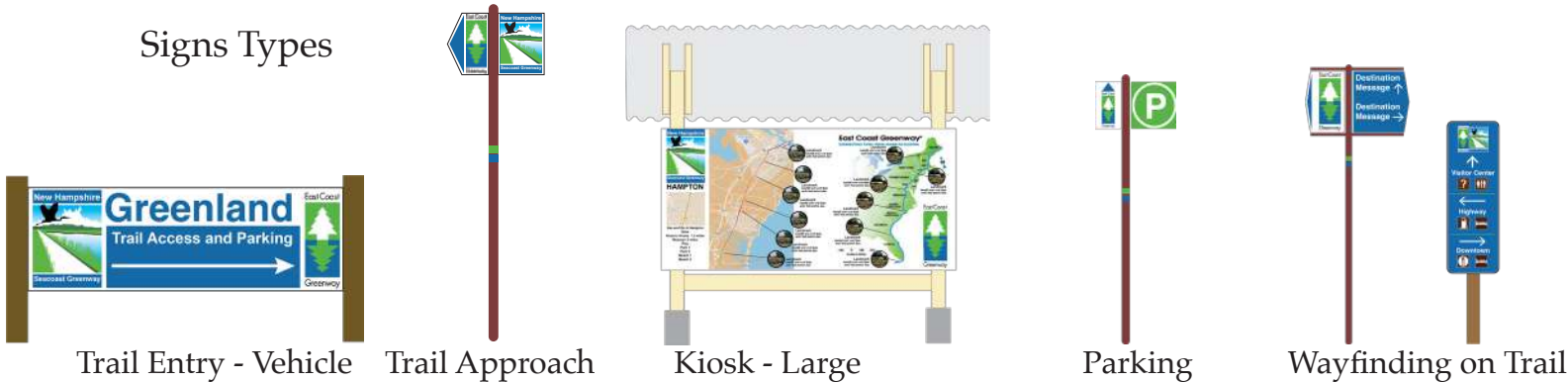


Existing Conditions - Plan



Existing Conditions - Perspective

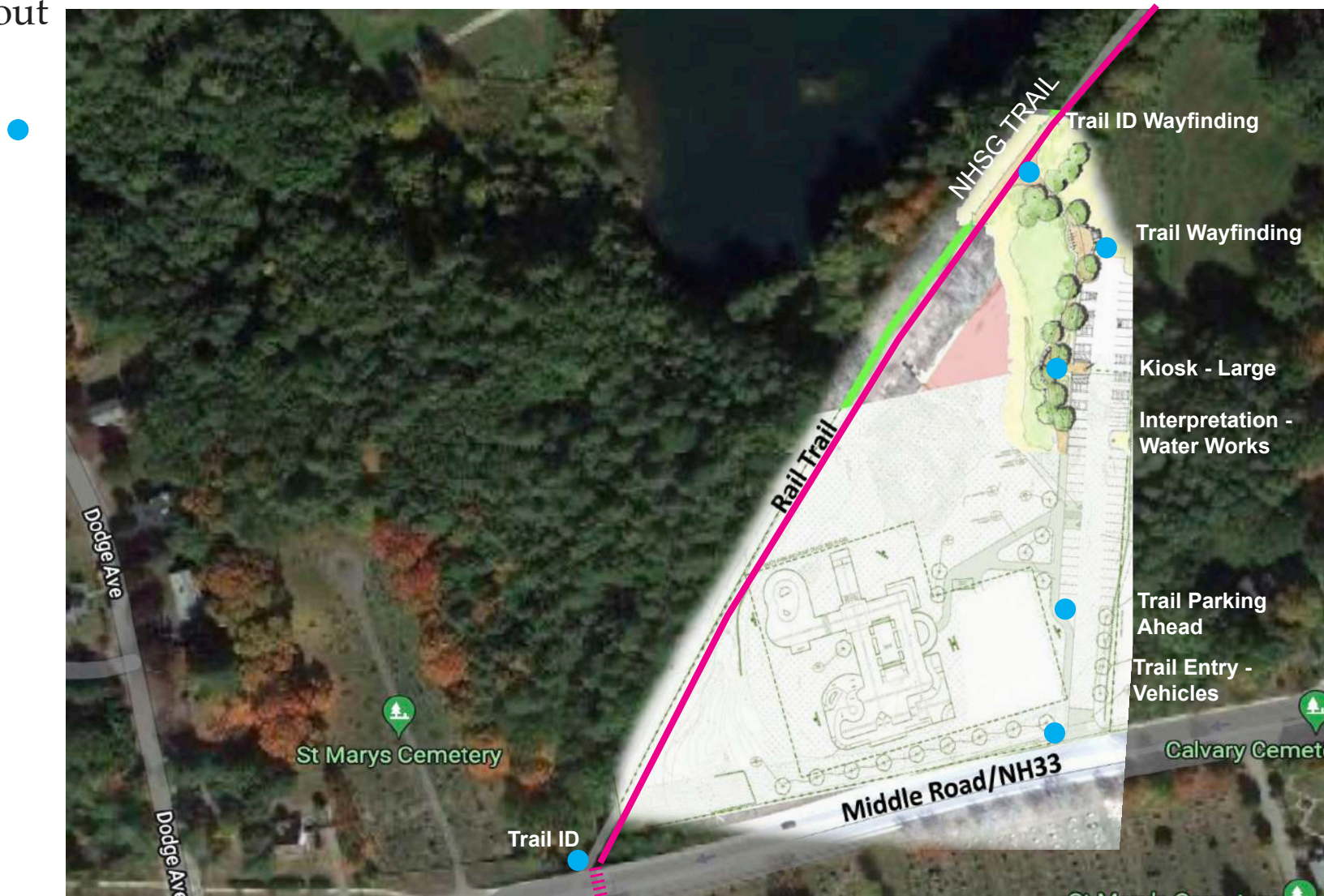
### Signs Types



# STUMP DUMP / NHSR 33 / GREENLAND RD

## Site Sign Layout

### Sign Locations



Site Notes:  
Adjacent development - Skate Park

Draft site plan created during Fall 2022 community event - does not represent final design.

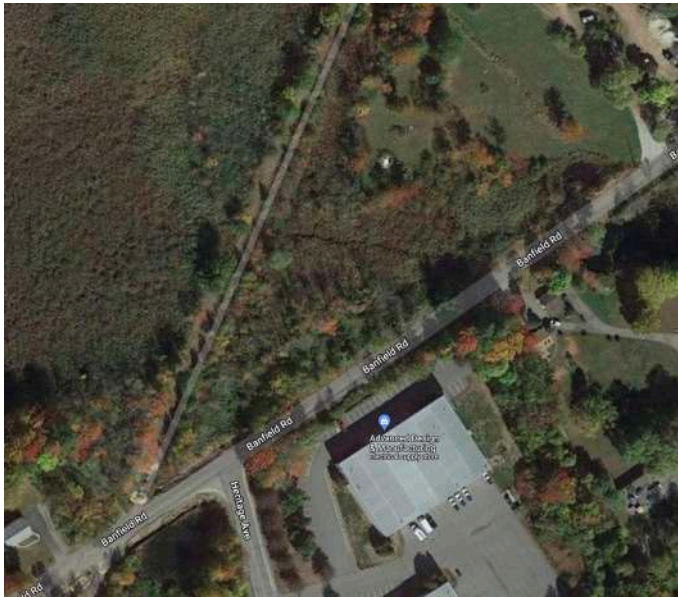


# NHSG - PHASE 1A & 1B Access Points

## BANFIELD RD - Major Hub

### Site Characteristics

- Located in Portsmouth
- Banfield Road is the intersecting road, at grade crossing
- Adjacent public land owned by the City of Portsmouth
- Limited residential neighbors
- Adjacent to manufacturing and wholesale businesses
- Noted space in the Portsmouth City Ped/Bike Plan



Existing Conditions - Plan



Existing Conditions - Perspective

### Signs Types



Trail Entry - Vehicle



Kiosk - Large



Wayfinding on Trail



Trail ID

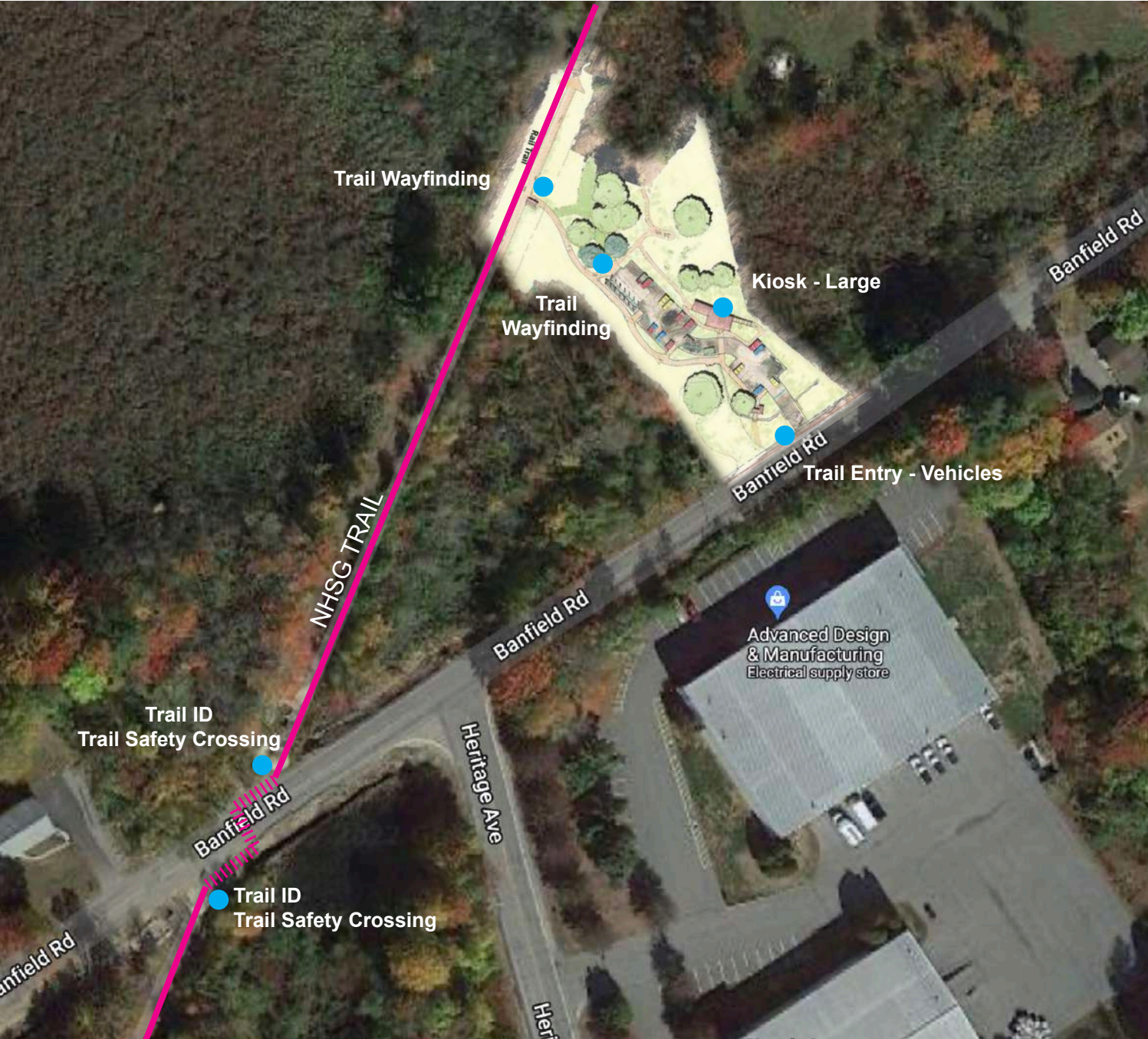
# BANFIELD RD

## Site Sign Layout

### Sign Locations



Site Notes:  
Draft site plan created during Fall 2022 community event - does not represent final design.





# NHSG - PHASE 1A & 1B Access Points

## OCEAN RD - Walk-on/Bike-on

### Site Characteristics

- Located in Portsmouth
- Ocean Road is the intersecting road, at grade crossing
- Adjacent public land owned by the City of Portsmouth
- Large residential neighborhoods within less than half a mile
- Commercial node nearby, restaurants & coffee shops
- Noted space in Portsmouth Ped/Bike Plan.



Existing Conditions - Plan



Existing Conditions - Perspective

### Signs Types



Trail Entry ID with basic information

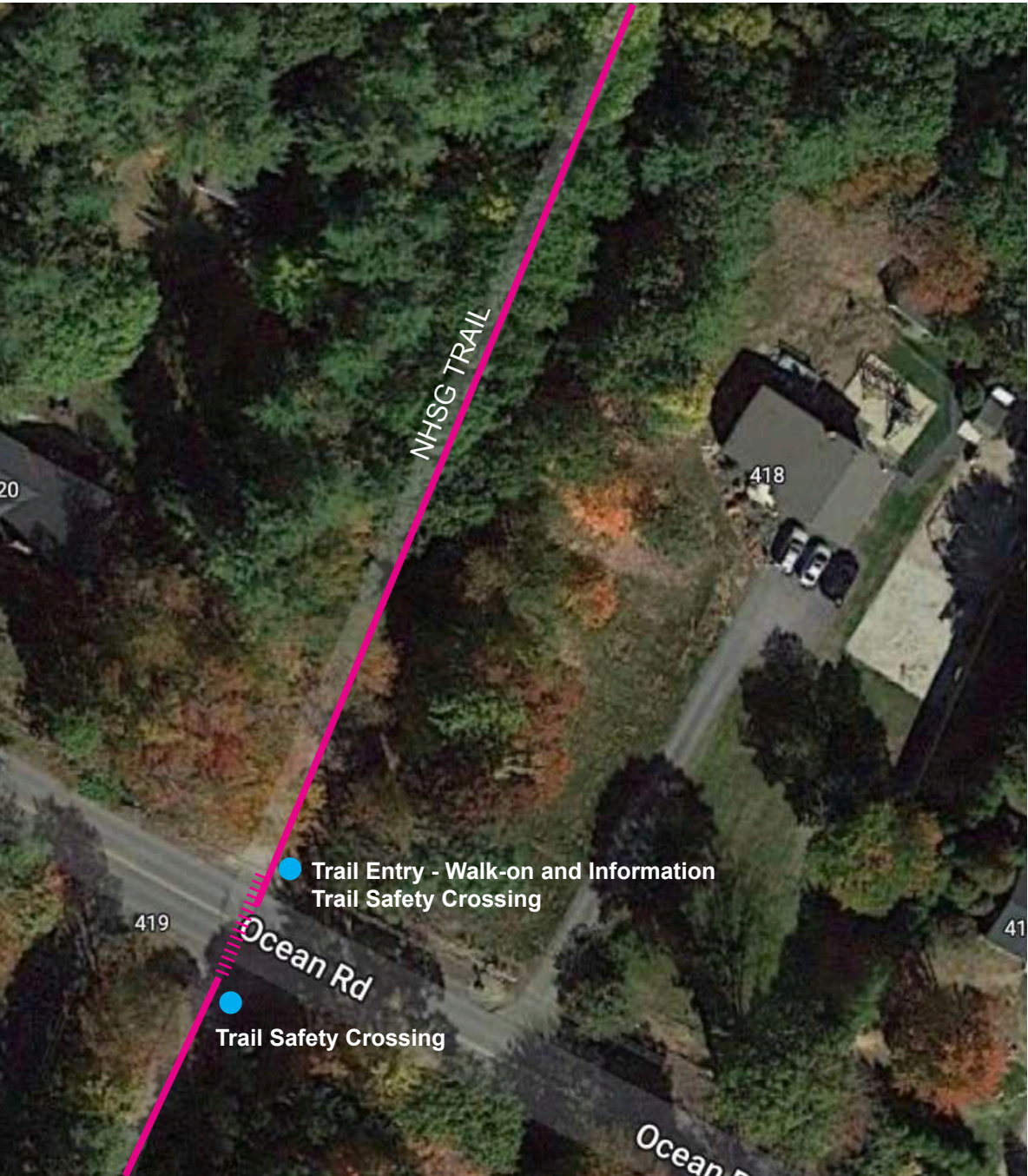
# OCEAN RD

## Site Sign Layout

Sign Locations



Site Notes:





# NHSG - PHASE 1A & 1B Access Points

## BREAKFAST HILL RD - Minor Hub

### Site Characteristics

- Located in Greenland
- Breakfast Hill Road is the intersecting road, at grade crossing
- No adjacent public land
- Several residential neighborhoods within a half mile
- Small business node nearby, adjacent to the Breakfast Hill Golf Club.



Existing Conditions - Plan

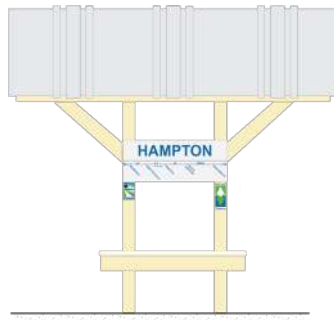


Existing Conditions - Perspective

### Signs Types



Trail Entry - Vehicle



Kiosk - Small



Parking

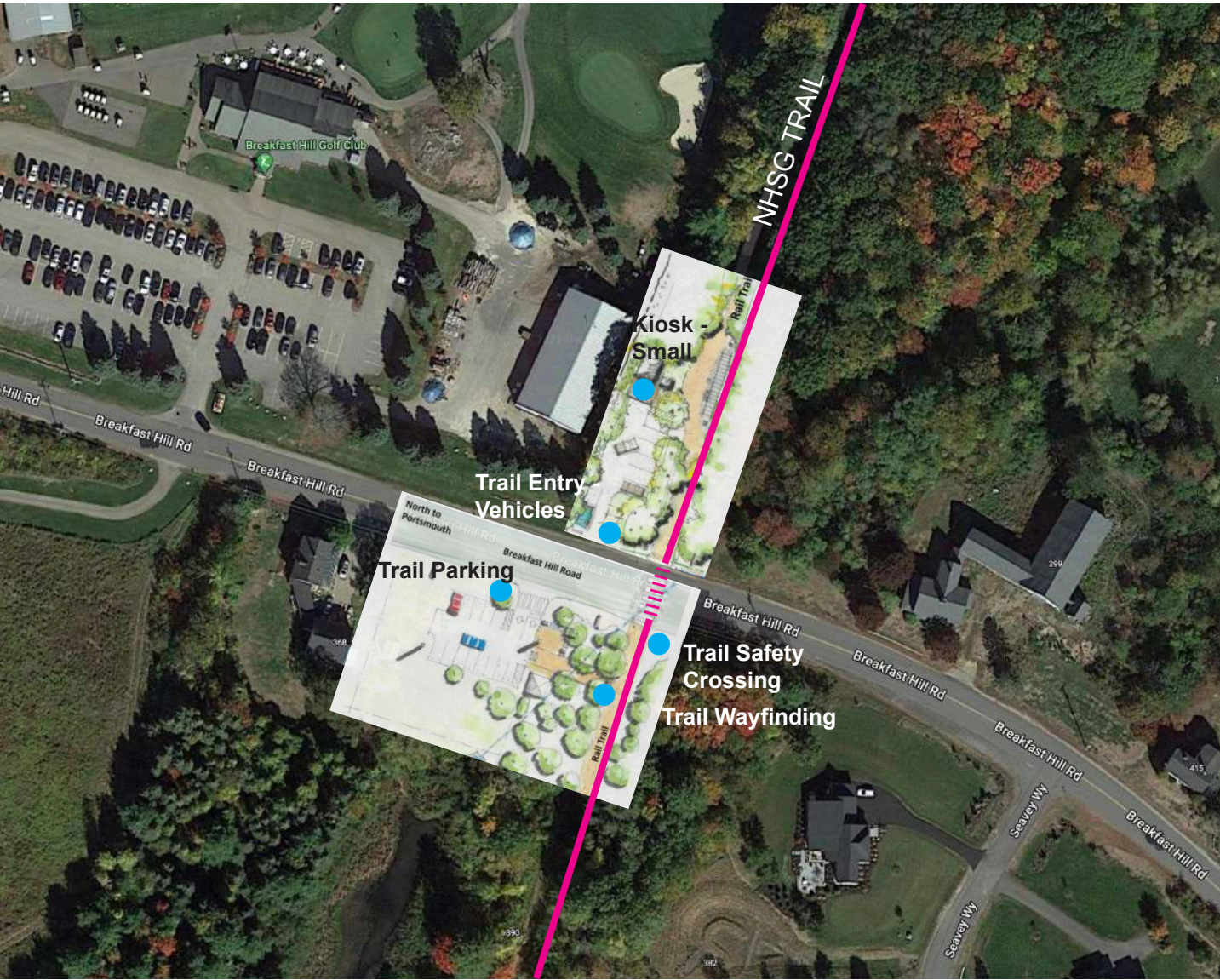


Trail Wayfinding

# BREAKFAST HILL RD

## Site Sign Layout

### Sign Locations



Site Notes:  
Proposed site development for north and south sides of Breakfast Hill Road.

Draft site plan created during Fall 2022 community event - does not represent final design.



# NHSG - PHASE 1A & 1B Access Points

## ATLANTIC AVE - Walk-on/Bike-on

### Site Characteristics

- Located in North Hampton
- Atlantic Avenue & NH111 are the interesting roads, separated grade, highway over trail
- Adjacent public land, owned by the state of NH
- Nearby to neighborhoods
- Village Center is directly adjacent to the trail for commercial space, food opportunities, and public spaces (school & library)



Existing Conditions - Plan



Existing Conditions - Perspective

### Signs Types



Trail Entry - Walk-on



Trail Wayfinding



Trail ID

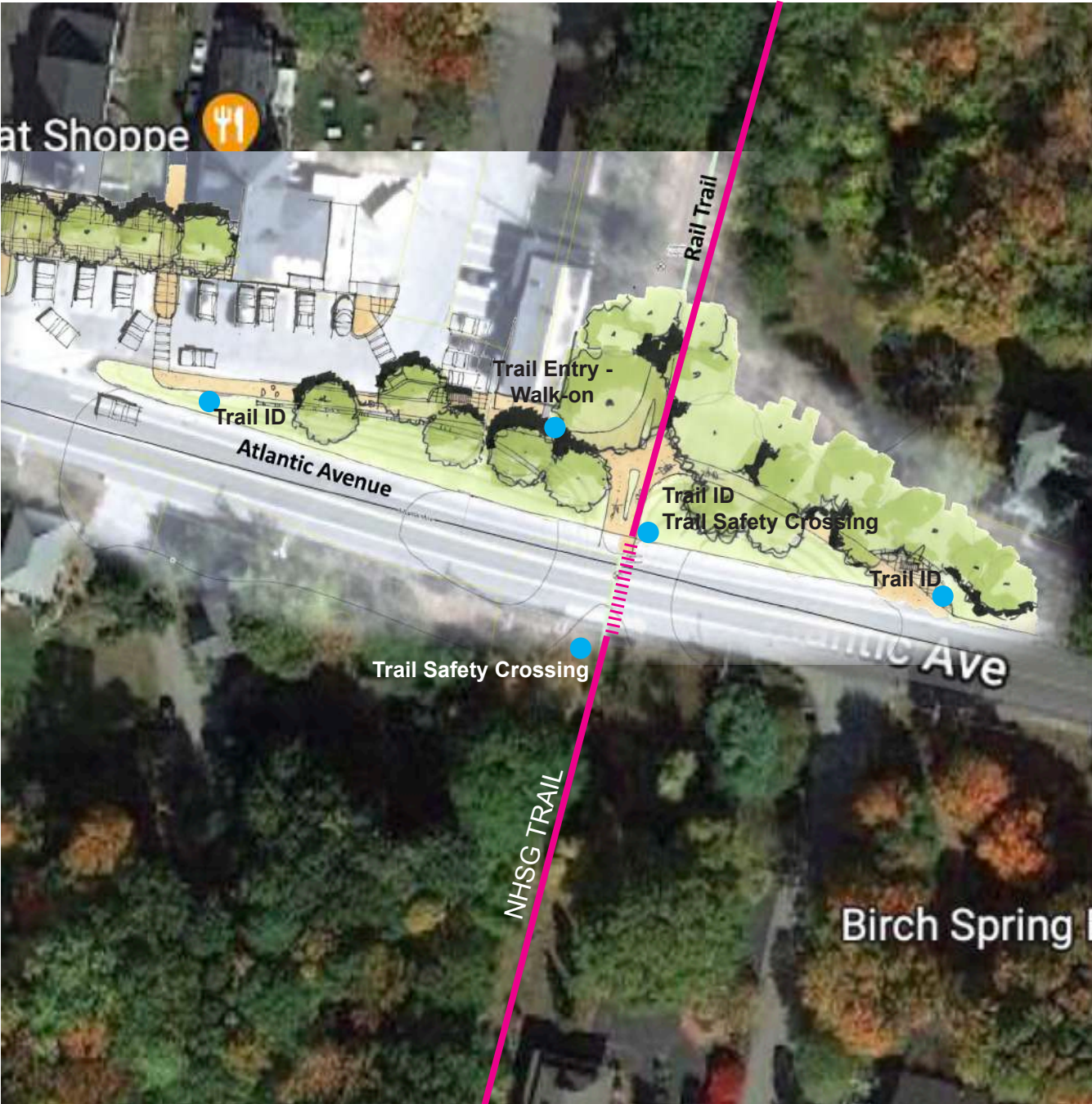


Overpass

# ATLANTIC AVE

## Site Sign Layout

Sign Locations



Site Notes:  
Draft site plan created during Fall 2022 community event - does not represent final design.



# NHSG - PHASE 1A & 1B Access Points

## LL BEAN PLAZA - Minor Hub

### Site Characteristics

- Located in North Hampton
- Lafayette Road is intersecting road to access LL Bean parking lot
- Minimal neighborhood access
- Located in a commercial space with access to restaurants
- Not directly on the trail, about 0.33 miles from trail.

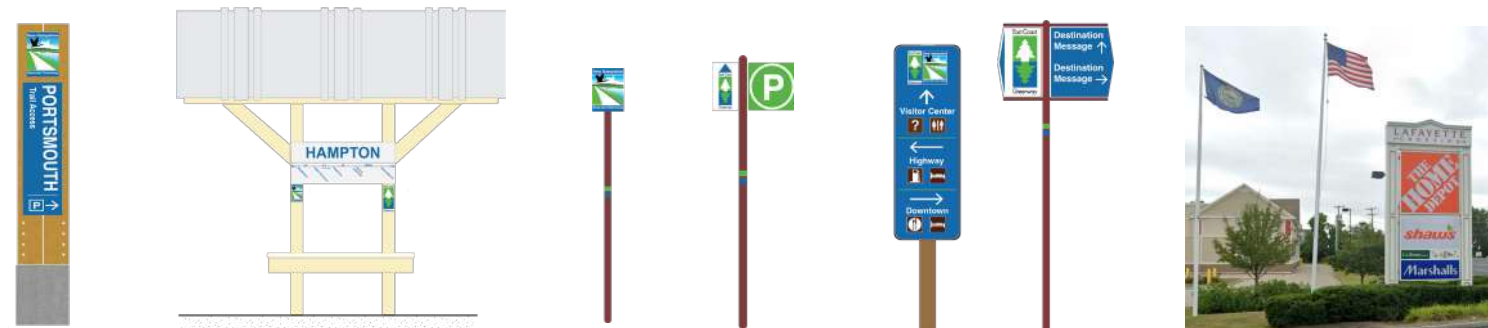


Existing Conditions - Plan



Existing Conditions - Perspective

### Signs Types



Trail Entry - Vehicle   Kiosk - Small   Trail ID   Parking   Wayfinding on Trail   Unique Signage Opp

# LL BEAN PLAZA

## Site Sign Layout

### Sign Locations



Site Notes:  
Proposed trailhead site is .33 miles from trail.

Unique signage opportunity with existing retail signage at intersection entry.

Draft site plan created during Fall 2022 community event - does not represent final design.

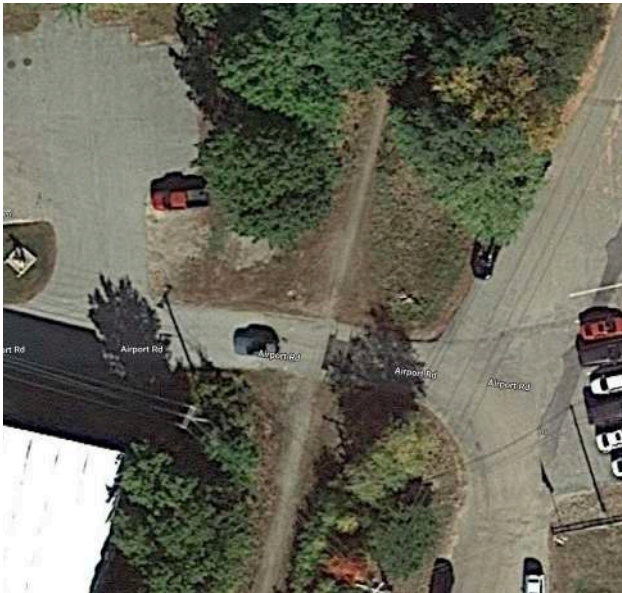


# NHSG - PHASE 1A & 1B Access Points

## AIRPORT RD - Walk-on/Bike-on

### Site Characteristics

- Located in North Hampton
- Private drive at the North Hampton Airfield is the intersecting road, at grade crossing
- Minimal adjacent public land, owned by the Town of North Hampton
- Two nearby neighborhoods exist on the west side of US1
- Adjacent to the Airfield Café & businesses along Lafayette Rd
- Potential for limited parking at the Airfield Café



Existing Conditions - Plan



Existing Conditions - Perspective

### Signs Types



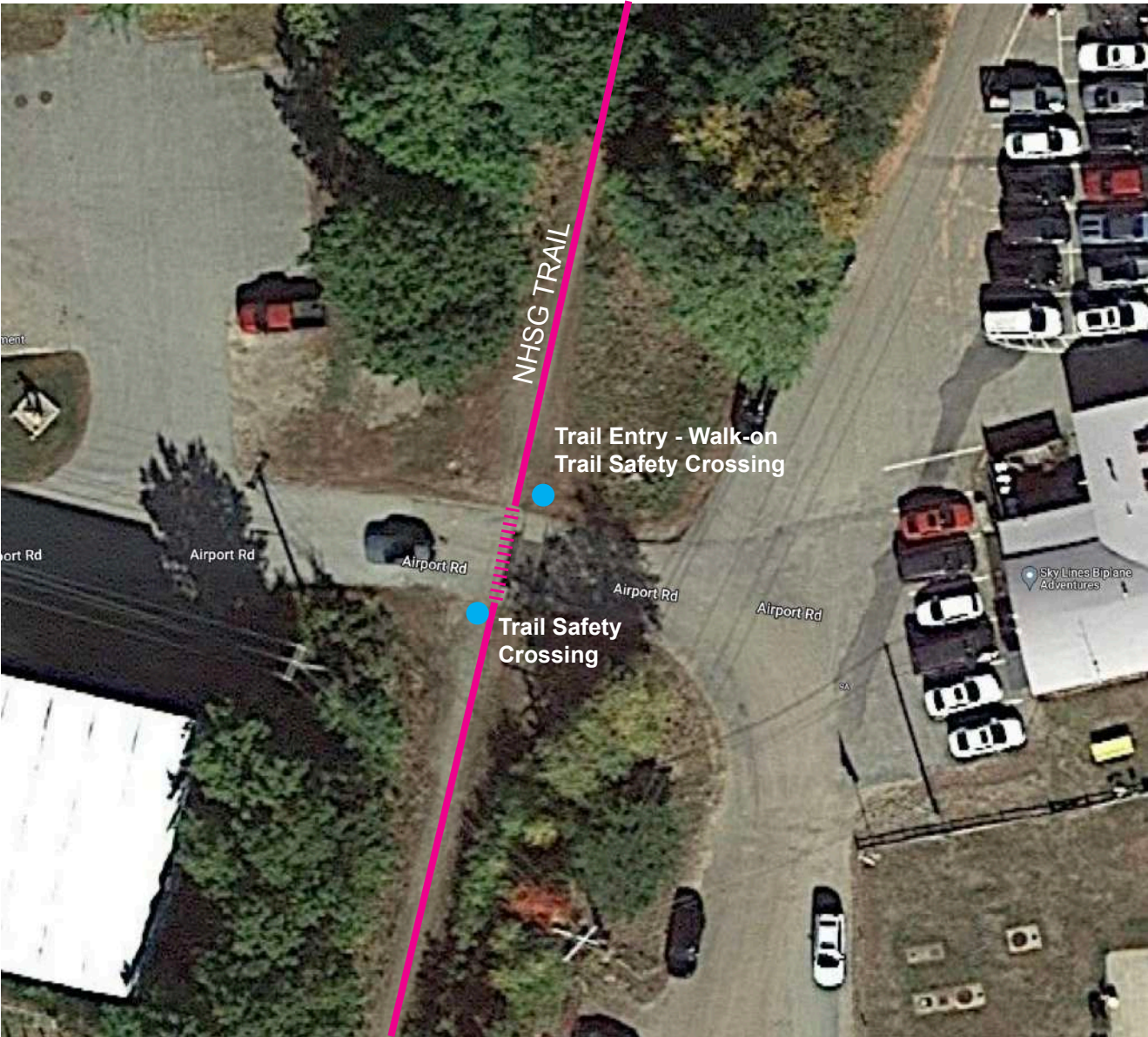
Trail Entry - Walk-on

# AIRPORT RD

## Site Sign Layout

Sign Locations ●

Site Notes:





# NHSG - PHASE 1A & 1B Access Points

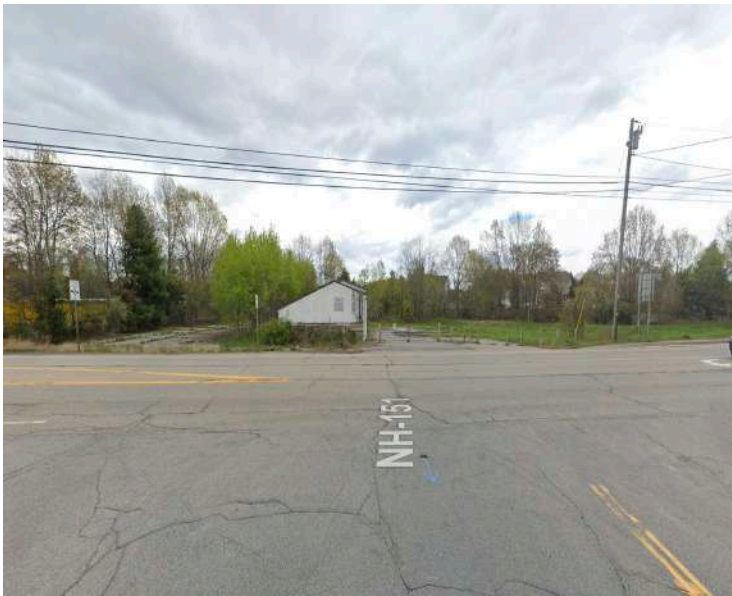
## NH DOT YARD at LAFAYETTE RD - Major Hub

### Site Characteristics

- Located in North Hampton & Hampton, at the Town Line
- Lafayette Road (US1) is the intersecting road, separated grade, road over trail
- Adjacent public land, owned by the state of NH
- Neighborhoods located on the east side of US1, some residential development on the west side of US1
- Near to industrial and wholesale development, few restaurants
- DOT Plans to build a new salt shed at another location, freeing up the space on this lot.

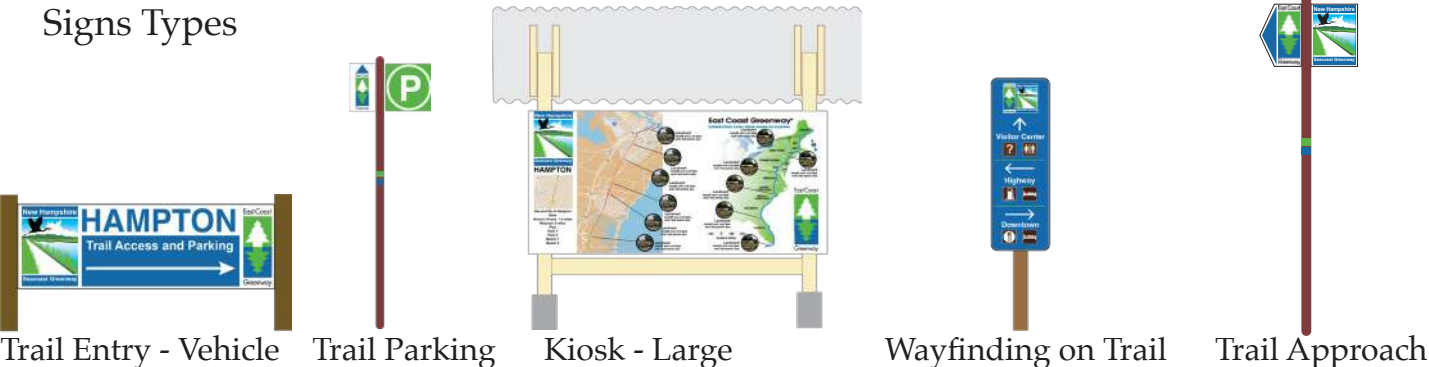


Existing Conditions - Plan



Existing Conditions - Perspective

### Signs Types



# NH DOT YARD at LAFAYETTE RD

## Site Sign Layout

### Sign Locations



Site Notes:  
Multi-phase development, may include visitor center, additional parking, and alterations to traffic pattern.

Draft site plan created during Fall 2022 community event - does not represent final design.



# NHSG - PHASE 1A & 1B Access Points

## HAMPTON DEPOT SQUARE at EXETER RD - Walk-on/Bike-on

### Site Characteristics

- Located in Hampton
- Exeter Road (NH27) is the intersecting road, separated grade, road over trail
- No adjacent public land
- No major neighborhoods nearby
- Near to Hampton Town Center, including multiple restaurants – excellent access point for access to downtown Hampton
- Parking at Depot Square is tight, so not recommended for trail parking



Existing Conditions - Plan



Existing Conditions - Perspective

### Signs Types



# HAMPTON DEPOT SQUARE at EXETER RD

## Site Sign Layout

### Sign Locations



### Site Notes:



# NHSG - PHASE 1A & 1B

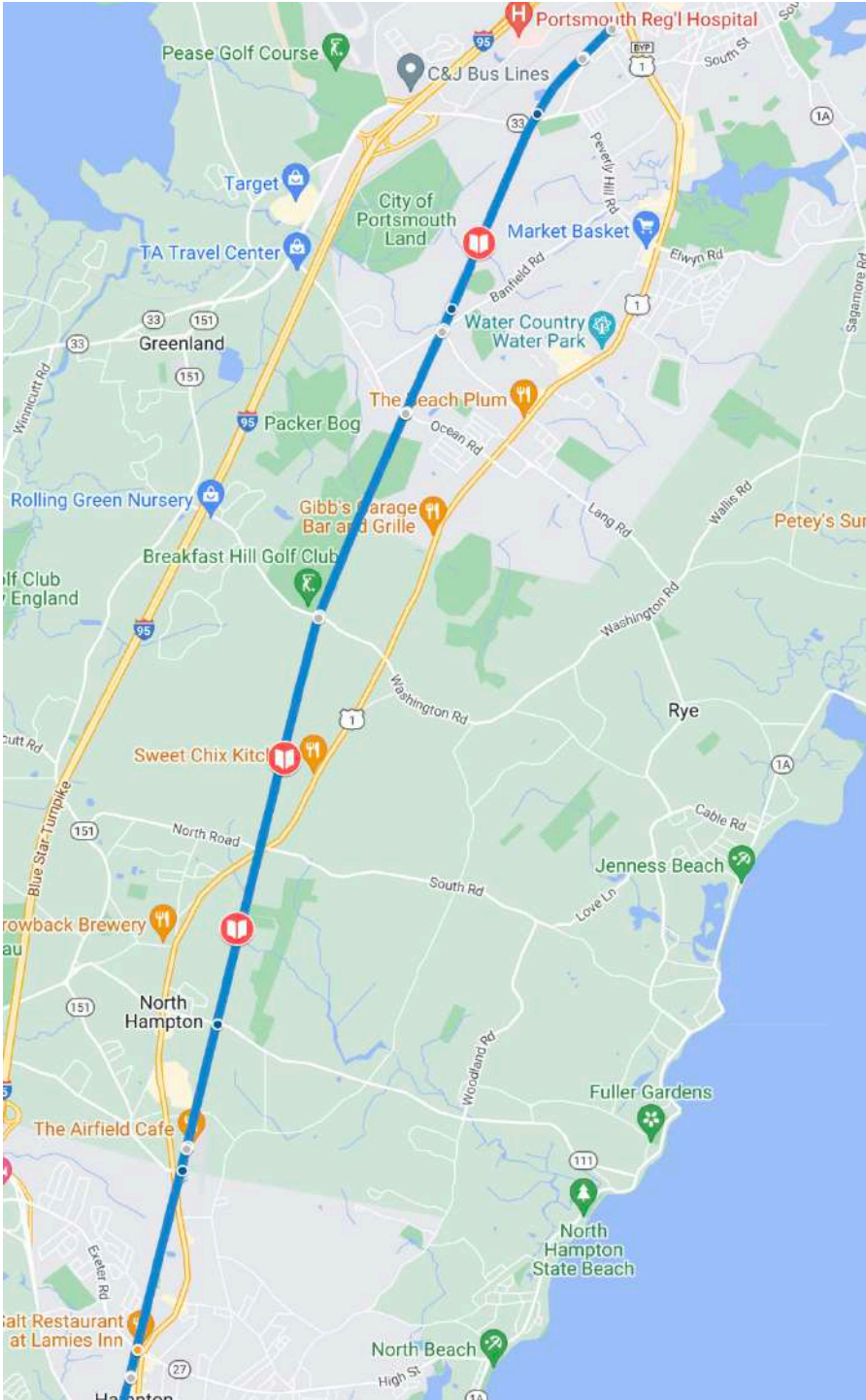
## INTERPRETATION - *A Collaborative Process*

**Proposed Locations**  
There are three proposed locations for interpretation along the NHSG Phase 1A and 1B. Indicated on the map by the red book symbols.

In the fall of 2022, a proposal was presented at a design workshop for *plug & play* templates. This process would require NHSG Alliance to hire a local designer to create a simple template that community partner organizations could then help curate. This format allows community partners to tell their own stories and invites partners to be a part of the process, giving them something to be proud of and a sense of ownership. The *plug & play* template creates a single look for interpretive signage, it also means signs can be created using the same template over a longer period of time.

Three different styles of signage were shown at the workshop. The first two were ‘table-top’ style signs, one horizontal and one vertical. They are a simple and effective way for passive storytelling. The third type was a ‘window to the past’, a type of sign that allows trail users to visualize what the trail corridor once would have looked like. These signs can be expanded upon in a few ways, especially through the use of QR codes. Codes can link to further information about the theme through the use of the NHSG website. The website can host: a Story Map, audio copy of the signs, Spanish copy of the signs, partners websites, broader stories, social media pages, and more information about the NHSG alliance and the East Coast Greenway.

While three potential themes are highlighted in this booklet, there are always more opportunities for stories. Themes the signage committee discussed in 2022 included: Indigenous Stories & History of the area; Seashore and Water Usage; Locals of the Past; Agricultural History; and themes found in nature (flora, animals, seasons).



# NHSG - PHASE 1A & 1B

## INTERPRETATION - Water Works History

**Proposed Location**  
Visible sections of Aqueduct near Portsmouth

**Proposed Partners**  
New Hampshire Historical Society Portsmouth  
Athenaeum

Historic Documentation Company, Inc.  
Strawbery Banke Museum

**Proposed Content Format**  
Suggested information to gather from Community Partners, for table-top interpretive signs:

- Title (no longer than 10 words)
- Subtitle (no longer than 25 words)
- Body Text (no longer than 350 words)
- One large, high quality backdrop photo
- Three or less small, high-quality images
- Captions of 25 words or less for all images
- Written text should be at an 8th grade reading level

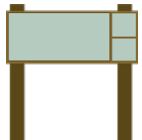


Proposed Interpretive Graphic



Interpretation Images and Sources

### Signs Types



Interpretation

**Notes:**  
Scott Bogle has historic images

# NHSG - PHASE 1A & 1B

## INTERPRETATION - The Ecology and History of the Great Bog

**Proposed Location**  
Along the trail in the Great Bog, near Pickering Brook. This is a long section of trail between Banfield Road and the Stump Dump. This location offers an interpretive moment for people at a more natural stopping place.

**Proposed Partners**  
New Hampshire Historical Society  
Southeast Land Trust of New Hampshire  
Great Bay Resource Protection Partnership  
Great Bay National Estuarine Reserve  
The Nature Conservancy

**Proposed Content**  
Suggested information to gather from Community Partners, for table-top interpretive signs:

- Title (no longer than 10 words)
- Subtitle (no longer than 25 words)
- Body Text (no longer than 350 words)
- One large, high quality backdrop photo
- Three or less small, high-quality images
- Captions of 25 words or less for all images
- Written text should be at an 8th grade reading level

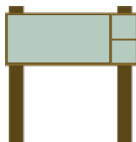


SAMPLE Interpretive Graphic Vertical and Horizontal Format



Interpretation Sample Images and Sources

### Signs Types



Interpretation

### Notes:

# NHSG - PHASE 1A & 1B

## INTERPRETATION - Railroad History

**Proposed Location**  
Along the trail just south of Breakfast Hill Road. This location offers a long stretch of trail with no natural stopping points. An interpretive sign can provide a curated point of reflection. Railroad history is prevalent throughout the corridor but a location with visible tracks or related railroad remnants would be desirable.

**Proposed Partners**  
New Hampshire Historical Society  
Nashua City Station Railroad History  
Newburyport Public Library  
Beverly Historical Society -  
Walker Transportation Collection  
Railroad Historical Society  
Maine Railroad Historical Society

**Proposed Content**  
Suggested information to gather from Community Partners, for table-top interpretive signs:

- Title (no longer than 10 words)
- Subtitle (no longer than 25 words)
- Body Text (no longer than 350 words)
- One large, high quality backdrop photo
- Three or less small, high-quality images
- Captions of 25 words or less for all images
- Written text should be at an 8th grade reading level.

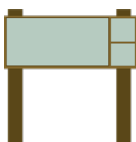


Proposed Interpretive Graphic



Interpretation Images

### Signs Types



Interpretation

### Notes:

- RR Station Hampton Falls, NH – Public Domain  
[https://commons.wikimedia.org/wiki/File:Hampton\\_Falls\\_station\\_postcard.jpg](https://commons.wikimedia.org/wiki/File:Hampton_Falls_station_postcard.jpg)
- Hampton Station, NH – Public Domain  
[https://commons.wikimedia.org/wiki/File:Hampton\\_station\\_postcard\\_\(1\).jpg](https://commons.wikimedia.org/wiki/File:Hampton_station_postcard_(1).jpg)
- Hampton Station, NH – Public Domain  
[https://commons.wikimedia.org/wiki/File:Hampton\\_station\\_postcard\\_\(2\).jpg](https://commons.wikimedia.org/wiki/File:Hampton_station_postcard_(2).jpg)
- North Hampton Station – Public Domain  
[https://commons.wikimedia.org/wiki/File:North\\_Hampton\\_station\\_1919\\_postcard.jpg](https://commons.wikimedia.org/wiki/File:North_Hampton_station_1919_postcard.jpg)



# NHSG PHASE 1A &1B

## MILE MARKER

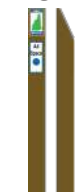
### Mile Markers and Adopt-a-Trail Program

Initially along the NHSG trail mileage markers will be placed every 2/10ths of a mile. Mileage markers are important for a variety of reasons, including emergency response, trail maintenance needs, and can be spaces for fundraising opportunities. A major role of the mileage markers for the NHSG will be for fundraising. There will be a space on the marker for a business to adopt a sign and have their logo showcased along the trail. The NHSGA will be responsible for the marketing, fabrication, and installation of the business logo. If they are successful, there is the potential to expand the program to install signs every 1/10th of a mile.

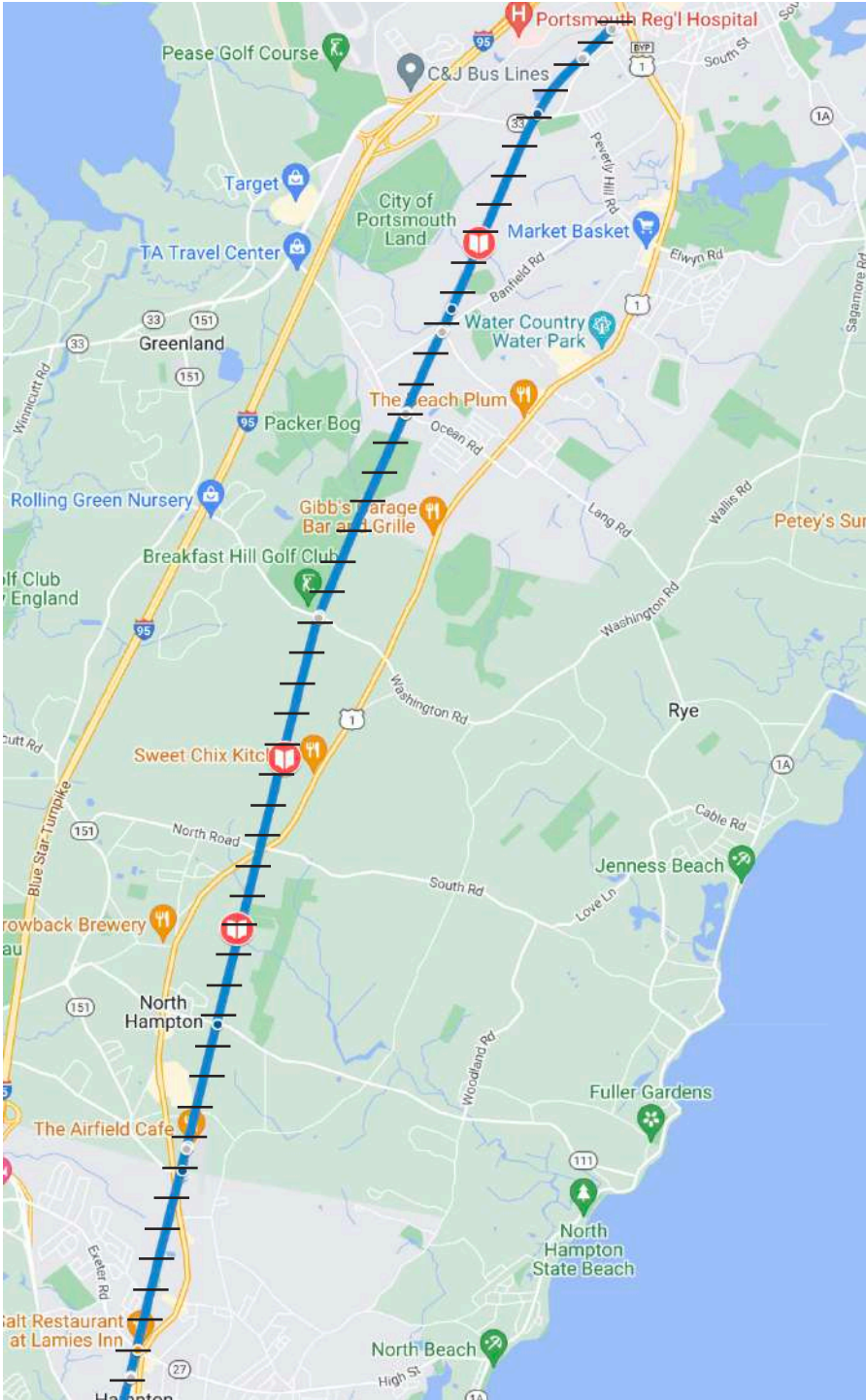
The 0.0 marker will be placed on the southern border of New Hampshire, along the border of Massachusetts, moving north until the trail terminus at Barberry Lane, at which point, the City of Portsmouth can choose to continue the markers through the more urban portion of the trail to the border of Maine. They should be installed with a distance measuring wheel for the most accurate location.

Mile markers for Phase 1A & 1B, to begin south of Hampton at approximately the 4.6 mile mark and ending at Barberry Lane at approximately the 14 mile mark. Approximately 47 mileage markers would be needed for the 9.16 mile segment. That is 47 small NHSG logo placards – numbers counted out every 2/10ths of a mile – 47 small fundraising placards.

Signs Types NOTE: The entire trail segment, approximately 14 miles, 5 signs per mile = 70 mileage markers. RTCA recommends having these all-metal pieces printed at once.



Mile Marker



# NHSG Phase 1A and 1B

## OTHER SIGNAGE - No Access Crossings

### Proposed Locations

Overpasses:  
Overpasses (x2 Directional from South to North)

- Exeter Road (Highway 27)
- Lafayette Road (Highway 1)
- Atlantic Avenue (Highway 111)
- Lafayette Road (Highway 1)
- Greenland Road (Highway 33)

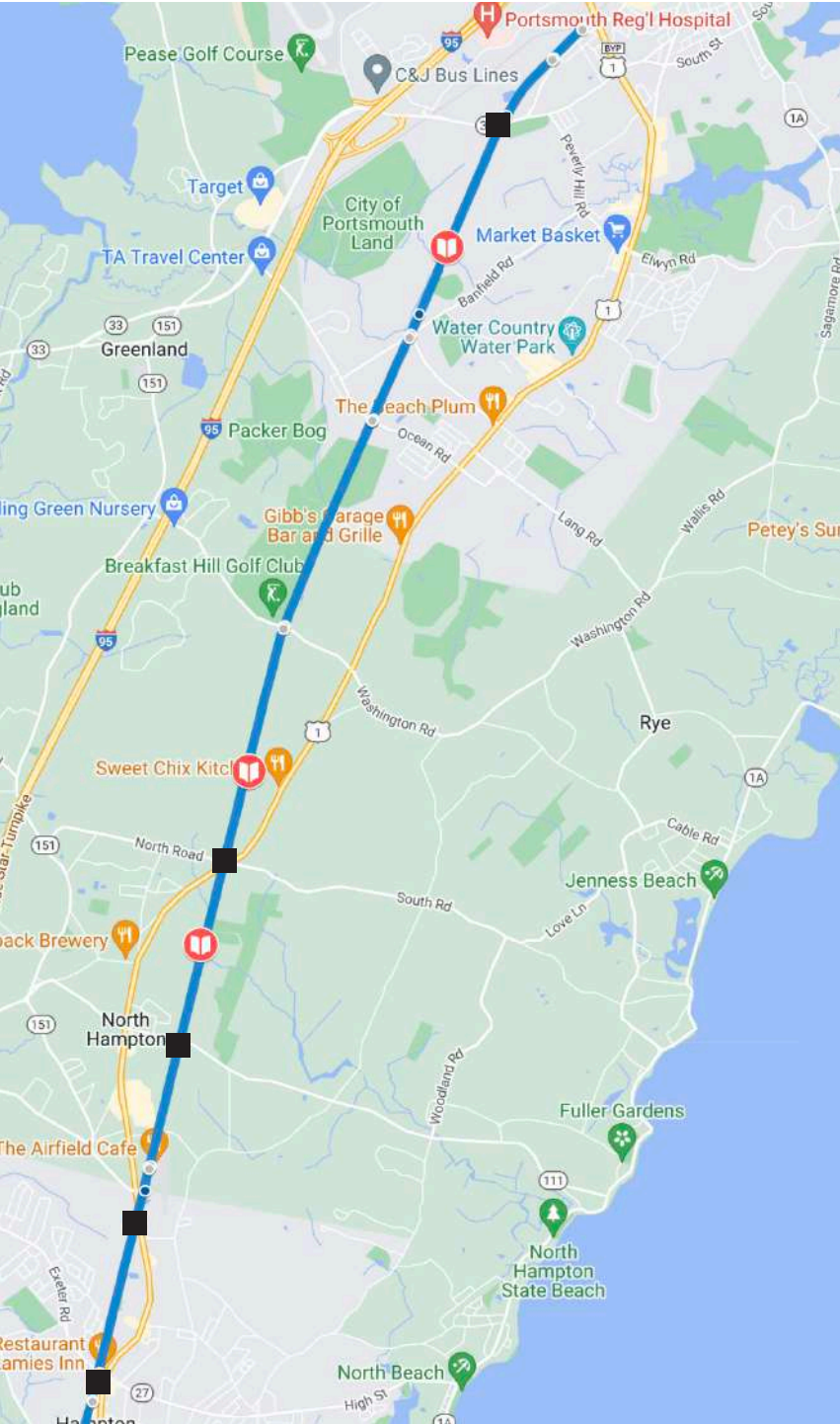


Overpass Example

### Underpasses



Underpass Example





# NHSG Phase 1A and 1B

## OTHER SIGNAGE - Trail Features

### ■ Proposed Locations

Waterways:  
Little River  
Berry’s Brook  
Pickering Brook

● City & Town Boundaries:  
(x2 Directions from South to North)  
Hampton  
North Hampton  
Greenland  
Rye  
Portsmouth

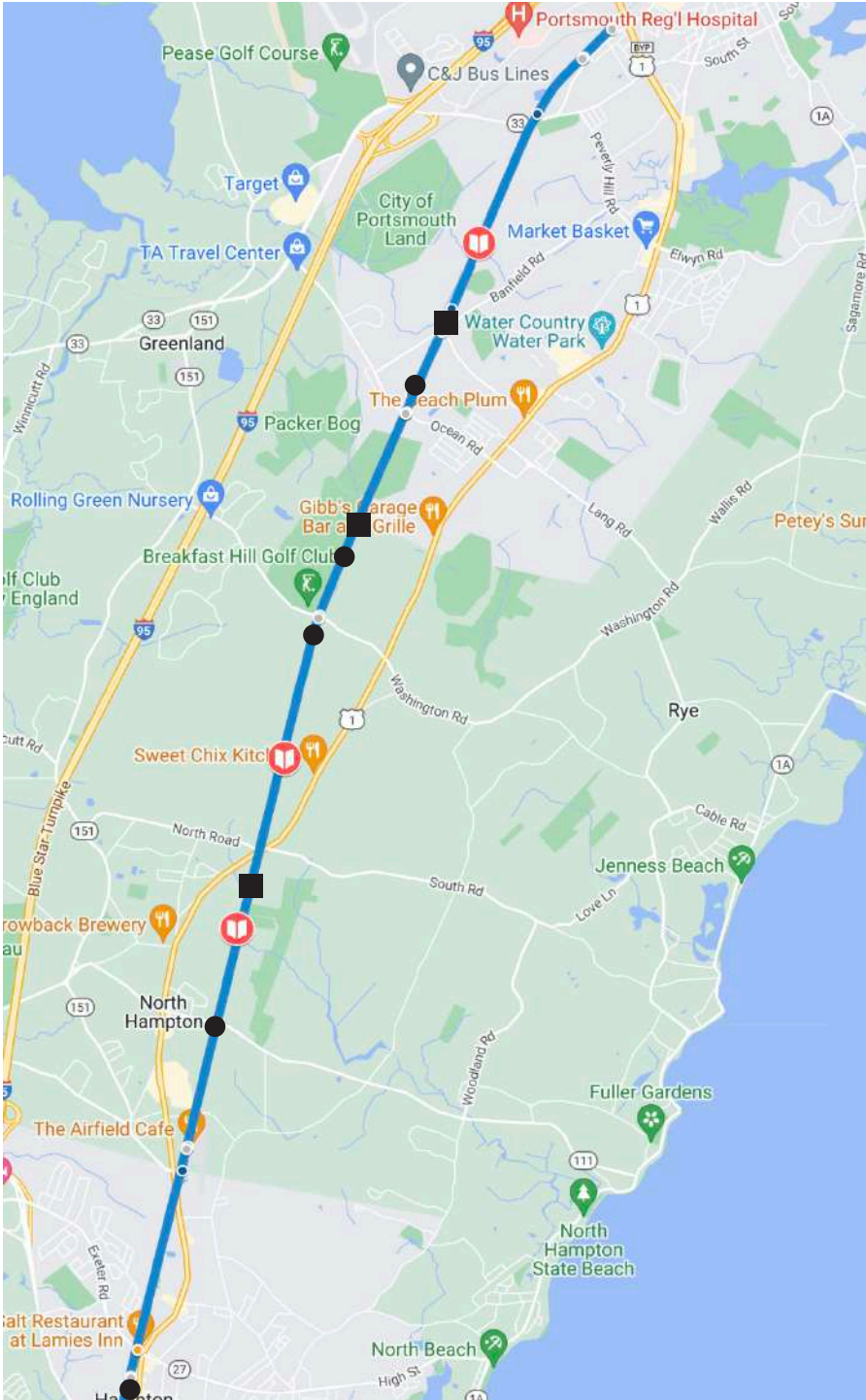
NOTE: Optional to print these with  
first round of printing: Hampton Falls,  
Seabrook.



Feature Example



City & Town Example



# NHSG Phase 1A and 1B

## ADDENDUM - Installation and Footing Samples

Mile Marker distance

Adopt a Trail Sponsor ID

Post

Mile Marker 36" to 48"

Minimum depth 24" to 36"

Grade Surface

Site Soil

Gravel and Fill

Gravel

**Direct Post in Hole**

Pros  
Works with existing conditions  
Inexpensive  
Volunteer friendly

Cons  
Wood rot with soil contact  
Potential for stock waste to cut to size  
Freeze thaw heaving

Mile Marker distance

Adopt a Trail Sponsor ID

Post

Mile Marker 36" to 48"

Minimum depth 24" to 36"

Grade Surface

Site Soil

Concrete Poured in Place

Gravel

**Poured in Place**

Pros  
Stable when set  
Can be done by volunteers

Cons  
Requires more tools and equipment  
Wood rot with soil contact  
Difficult to replace  
Potential for stock waste to cut to size

Mile Marker distance

Adopt a Trail Sponsor ID

Post

Mile Marker 36" to 48"

Minimum depth 24" to 36"

Grade Surface

Site Soil

Sono Tube with Concrete

Gravel

**At Grade Bracket**

Pros  
Drains away from wood  
Stable and replaceable  
Can be done by volunteers

Cons  
Requires more tools and equipment  
More expensive



# NHSG Phase 1A and 1B

## ADDENDUM - Signage Spread Sheet

### NHSG SIGN INVENTORY

Sign Type	Example	Size	Components	Materials	Quantity	Supplier	Notes
							
Trail ID - Entry Minor Hub							
Trail ID - Minor Hub							
Trail ID - Entry Major Hub							
Trail Entry - Pillar with mount							
Trail Entry - ground mount							
Trail ID - Entry Walk-on A							
Trail ID - Entry Walk-on B							
Trail ID - Entry Walk-on C							
Wayfinding - Local, vehicle							
Wayfinding - Local, trail							

# NHSG Phase 1A and 1B

## ADDENDUM - Signage Spread Sheet

### NHSG SIGN INVENTORY

Sign Type	Example	Size	Components	Materials	Quantity	Supplier	Notes
Trail ID & Info Walk-on A							
Trail ID & Info Walk-on B							
Trail Access Approach							
Trail ID Parking							
Wayfinding - Trail to Town							
Wayfinding - Trail to Town							
Wayfinding - Trail to Town Trail Use & Safety Policies							
Kiosk Large							
Kiosk Small							
Interpretation							
Mile Marker							
Additional Sign - Overpass							
Additional Sign - Underpass							
Additional Sign - Feature Name A							
Additional Sign - Feature Name B							