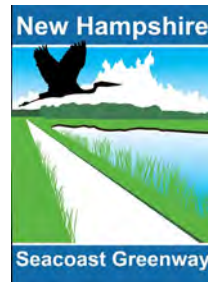


New Hampshire Seacoast Greenway Spring 2023 Project Check-In



NHSG Committee
April 25, 2023



AGENDA

- Welcome & Introductions
- Update on Portsmouth-North Hamp Construction
- Celebrating NPS/RTCA Project Outcomes
 - Signage Plan and Sign Printing
 - Trailhead Conceptual Designs
 - NHSGA Nonprofit Development
- Next Steps
 - NHSGA fundraising, volunteer development, etc.
 - Rec Trails & LWCF grant opportunities





NH Seacoast Greenway Summary of Project Phases



Phase IA – North Hampton - Ports (8 mi)

Design and permitting in progress

Construction 2023-2024



Phase IB – Hampton (1.6 mi)

Design and permitting in progress

Construction 2024



Phase II – Seabrook (2.4 mi)

In TYP for 2030



Phase III – Hampton Falls/Hampton (2.3 mi)

In TYP for 2032

National Park Service Technical Assistance Grant

NPS Rivers, Trails & Conservation Assistance Program

Project Workgroups

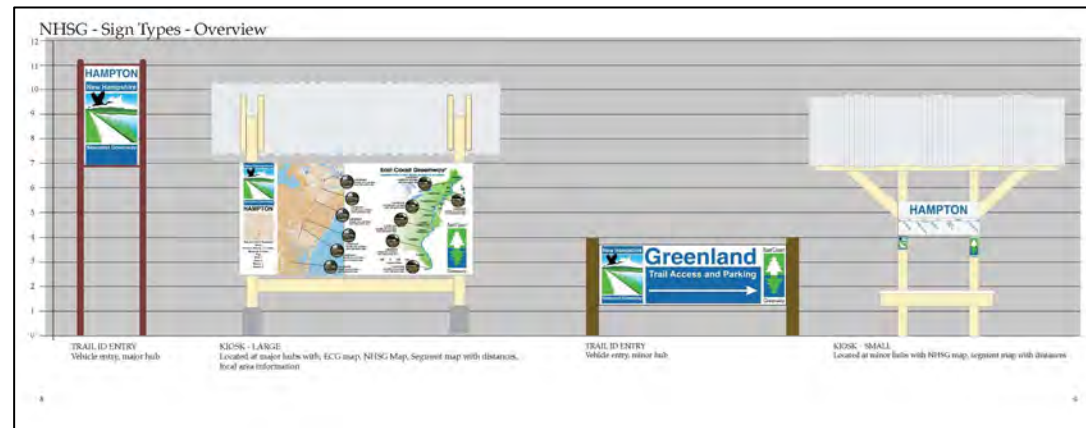
- **Community Connections & Trail Access Points**
- **Trail Signage Planning**
- **NHSGA Organizational Development**



National Park Service Technical Assistance Grant

NPS Rivers, Trails & Conservation Assistance Program

Signage Plan & Workbook



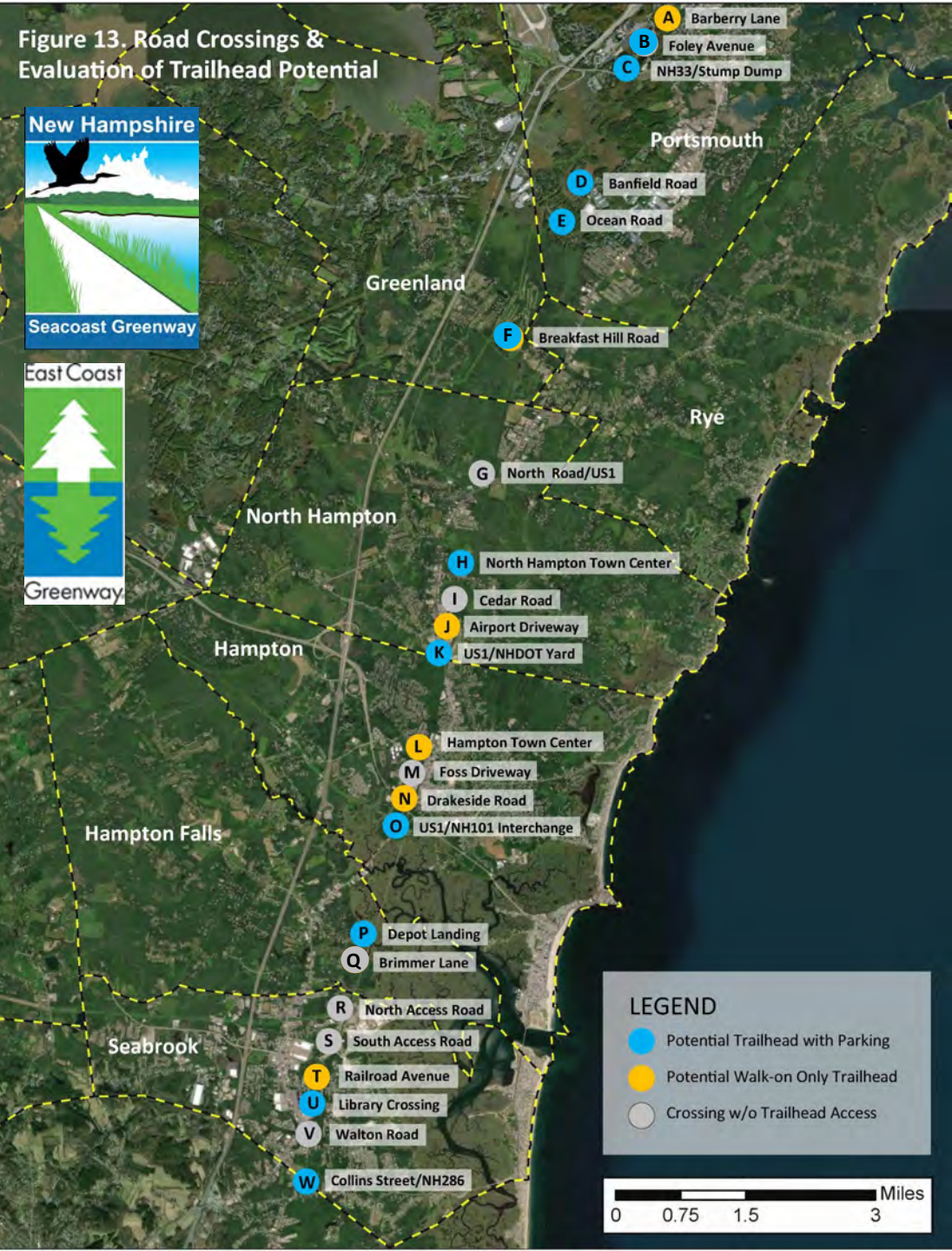
National Park Service Technical Assistance Grant

NPS Rivers, Trails & Conservation Assistance Program

Trailhead Planning & Design Concepts



Figure 13. Road Crossings & Evaluation of Trailhead Potential



NH Seacoast Greenway Trailhead Access Analysis

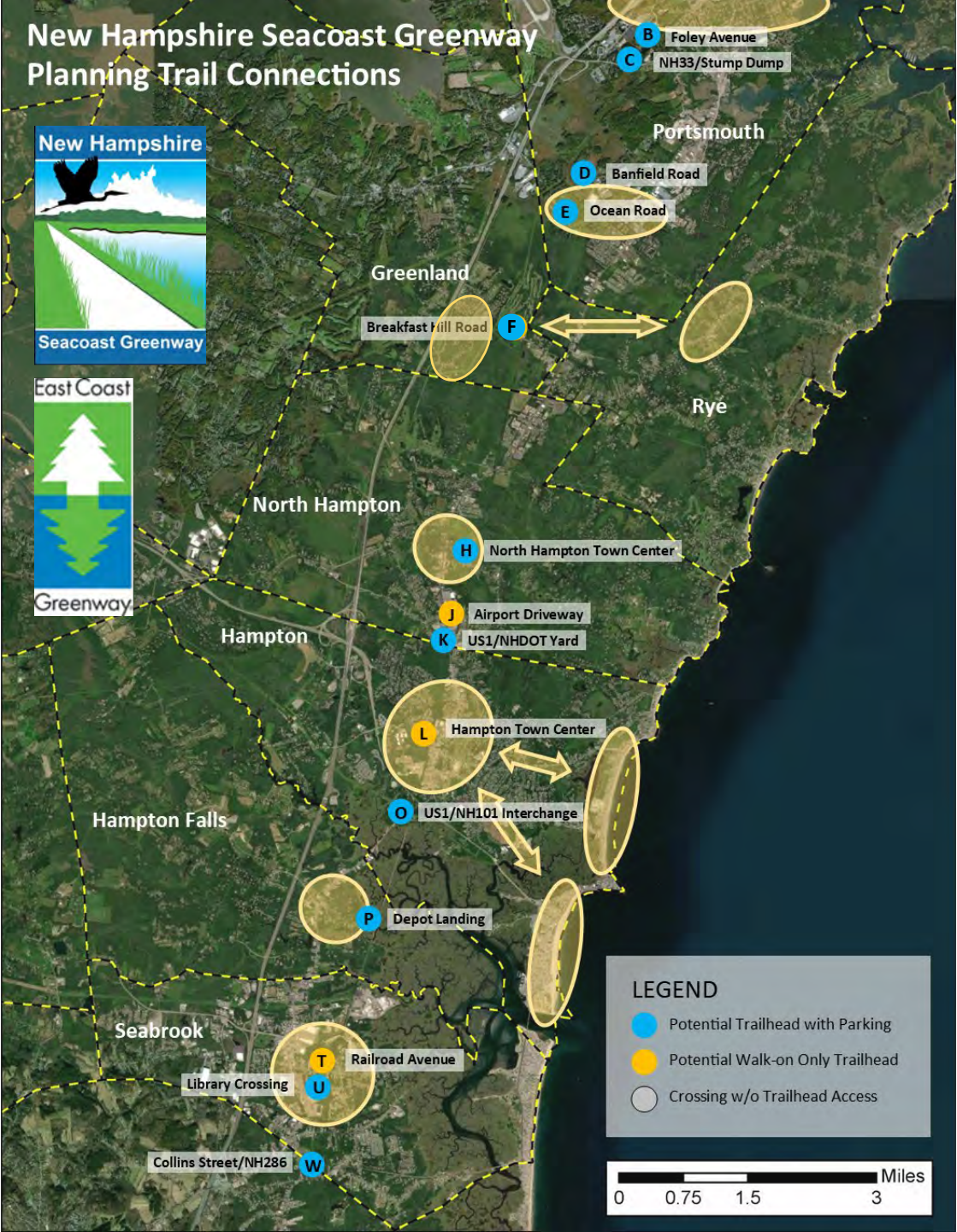
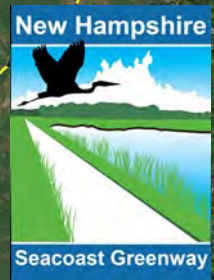
23 Road Crossings of Hampton Branch between Portsmouth and Seabrook

Potential trailhead with parking (11) ●

Potential walk-on only trailhead (5) ●

Crossing without trailhead potential (7) ●

New Hampshire Seacoast Greenway Planning Trail Connections

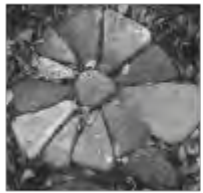


NHSG Community Connections Workgroup



Goals for Workgroup

- Planning assistance to towns on trail connections:
- *How can the trail be most accessible to residents?*
- *How can the trail best connect to serve as an economic catalyst locally?*
- Refining trailhead designs



t e r r a f i r m a
landscape architecture



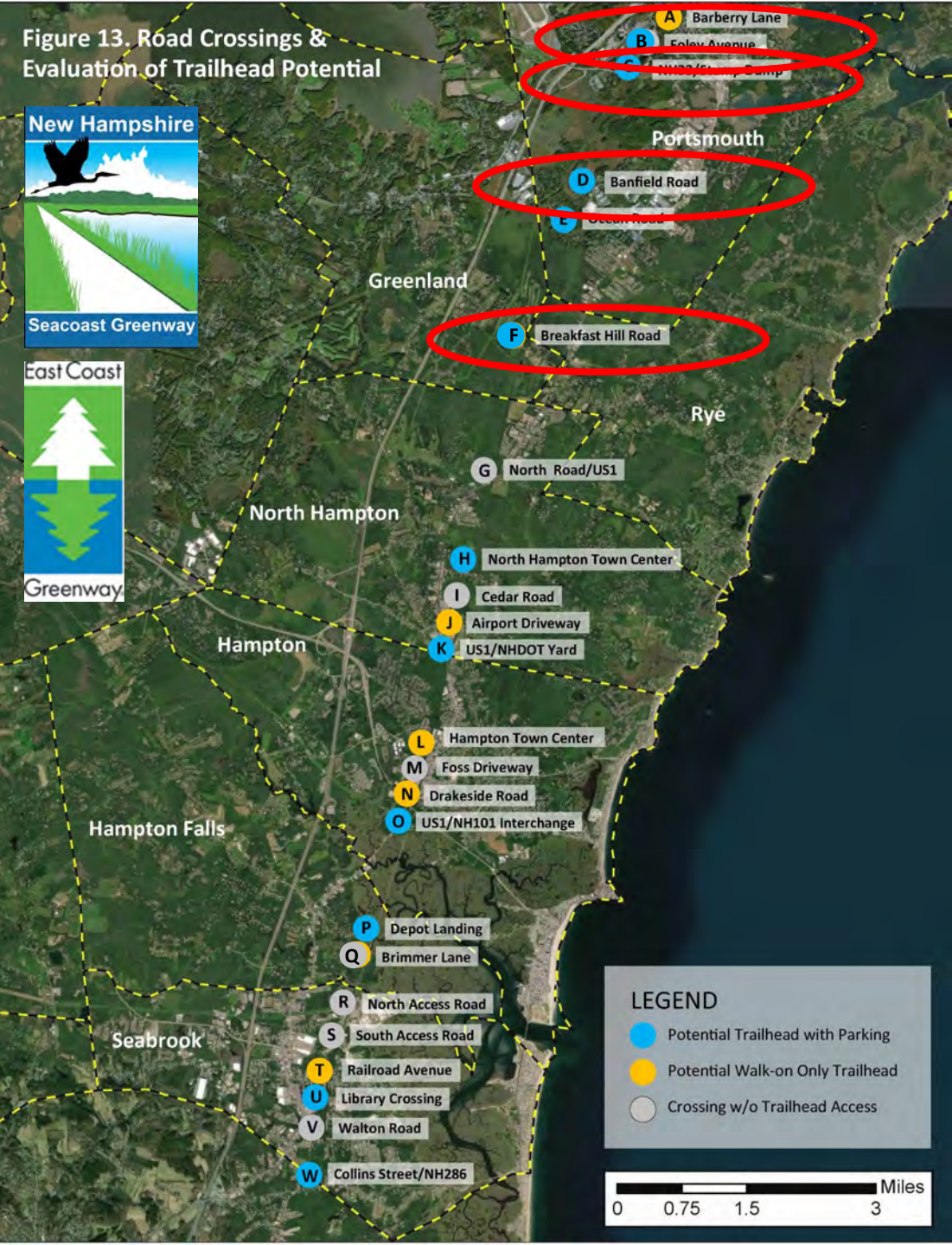
D. R. HORNE & COMPANY



Workshop Design Teams

- Bob White, GPI
- Ken Ferrer, Placework
- Terrence Parker, Terra Firma
- Will Gatchell, Harriman
- Howard Snyder, Harriman
- Paul Jackson, Architect
- Nancy Kanner, Kanner Graphic Design
- Colleen Wolfe, D.R. Horne & Company
- Jeff Brubaker, Planner & Trail Advocate
- Tony Ciolfi, TEC
- Julie Isbill, National Park Service
- Cindi Hron, National Park Service
- Mallory Zink, National Park Service

Figure 13. Road Crossings & Evaluation of Trailhead Potential



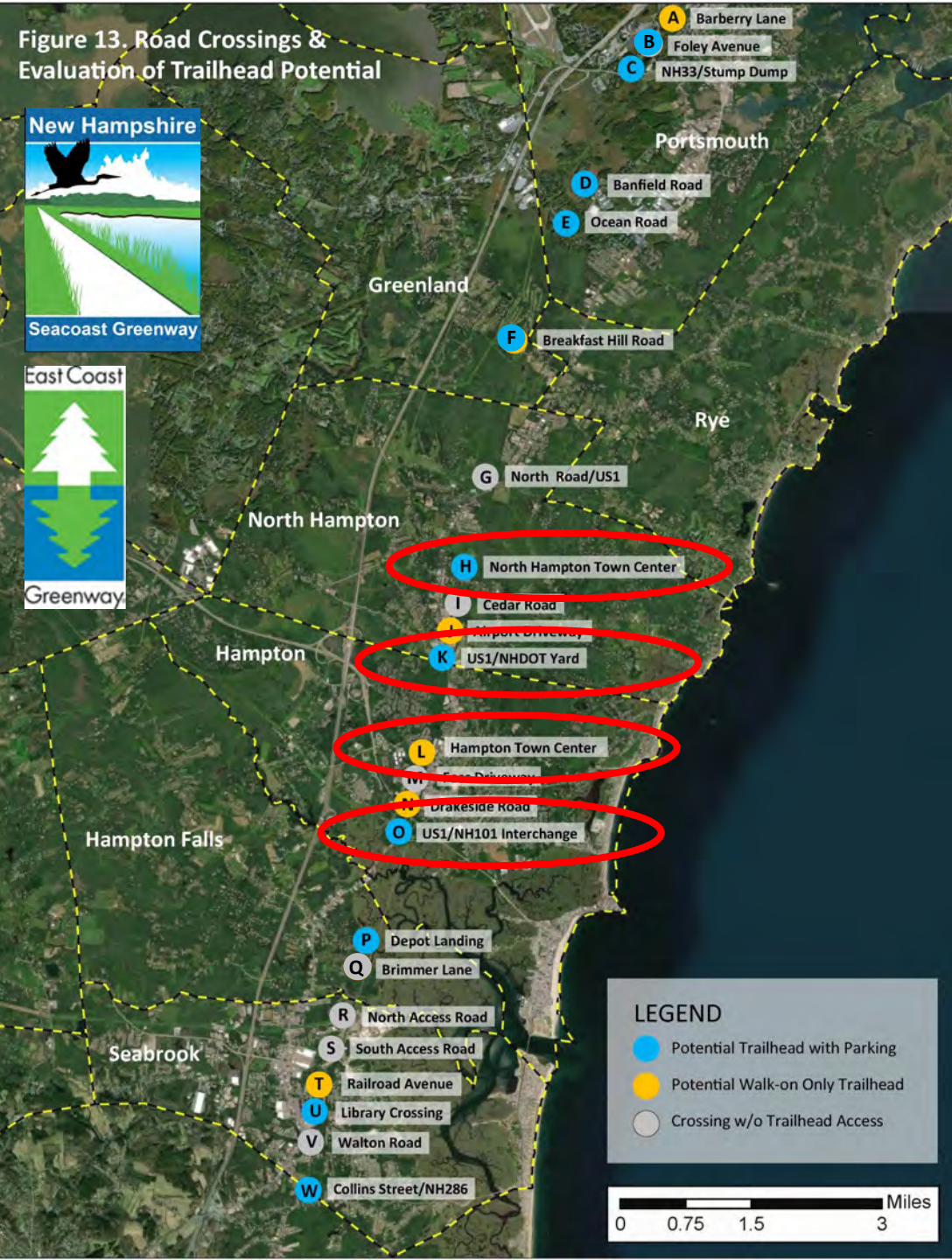
NH Seacoast Greenway Community Connections Design Workshop #1

*Portsmouth Public Library
September 23, 2022*

Focus on Four Trail Access Points

- Borthwick Avenue
- NH33/Stump Dump
- Banfield Road
- Breakfast Hill Road

Figure 13. Road Crossings & Evaluation of Trailhead Potential



NH Seacoast Greenway Community Connections Design Workshop #2

*North Hampton Town Hall
October 21, 2022*

Focus on Five Trail Access Points

- North Hampton Town Center
- LL Bean Plaza
- Lafayette Road/US1
- Hampton Town Center
- US1/NH101 Interchange

Trail Access Design Concepts Borthwick Ave & Eileen Dondero Foley Ave

Site: Borthwick Avenue

City: Portsmouth

Adjacent public land: Yes (City)

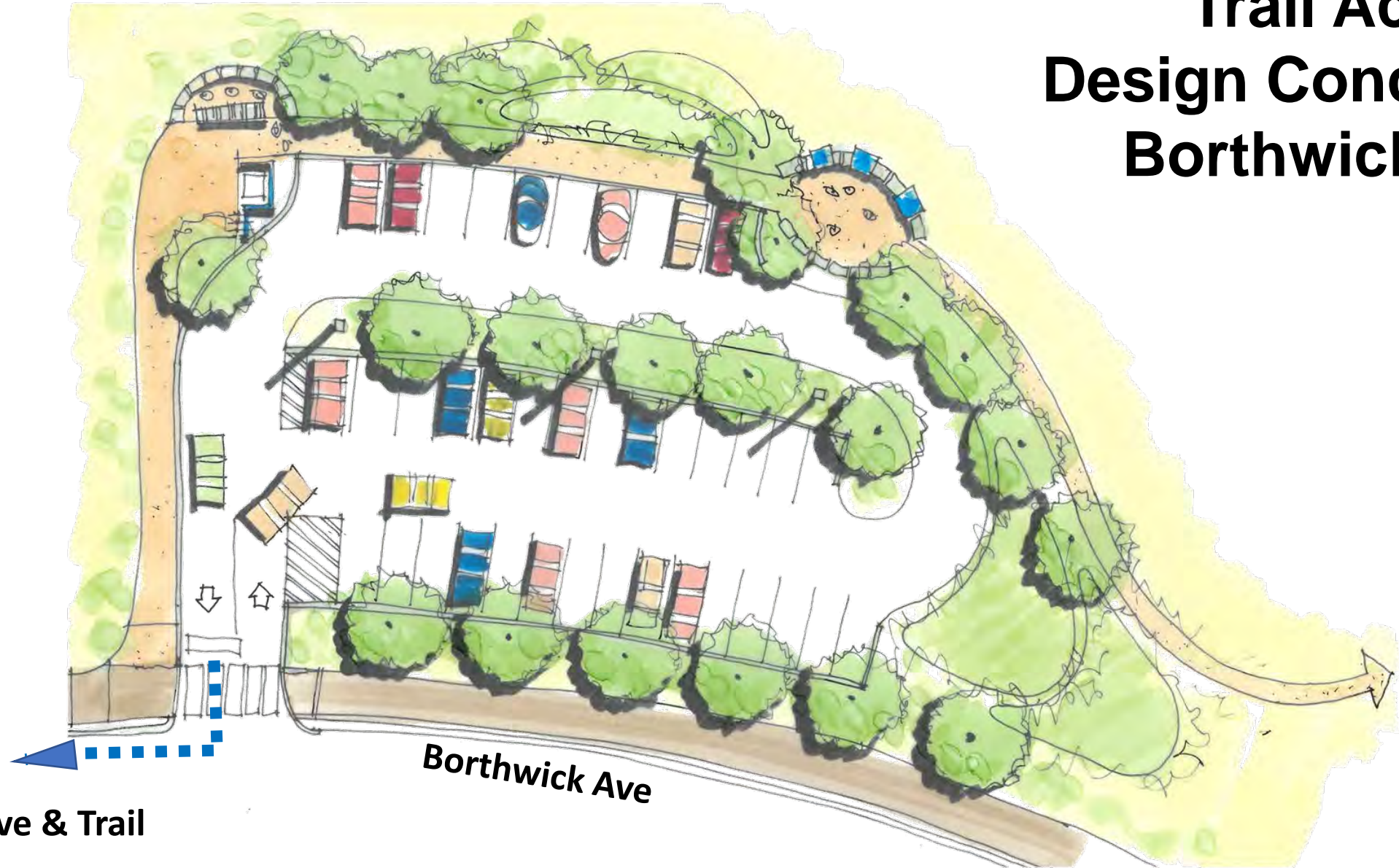
Neighborhood Proximity: Yes

Business Proximity: Yes – employment ctr

Plans: City Ped/Bike Plan



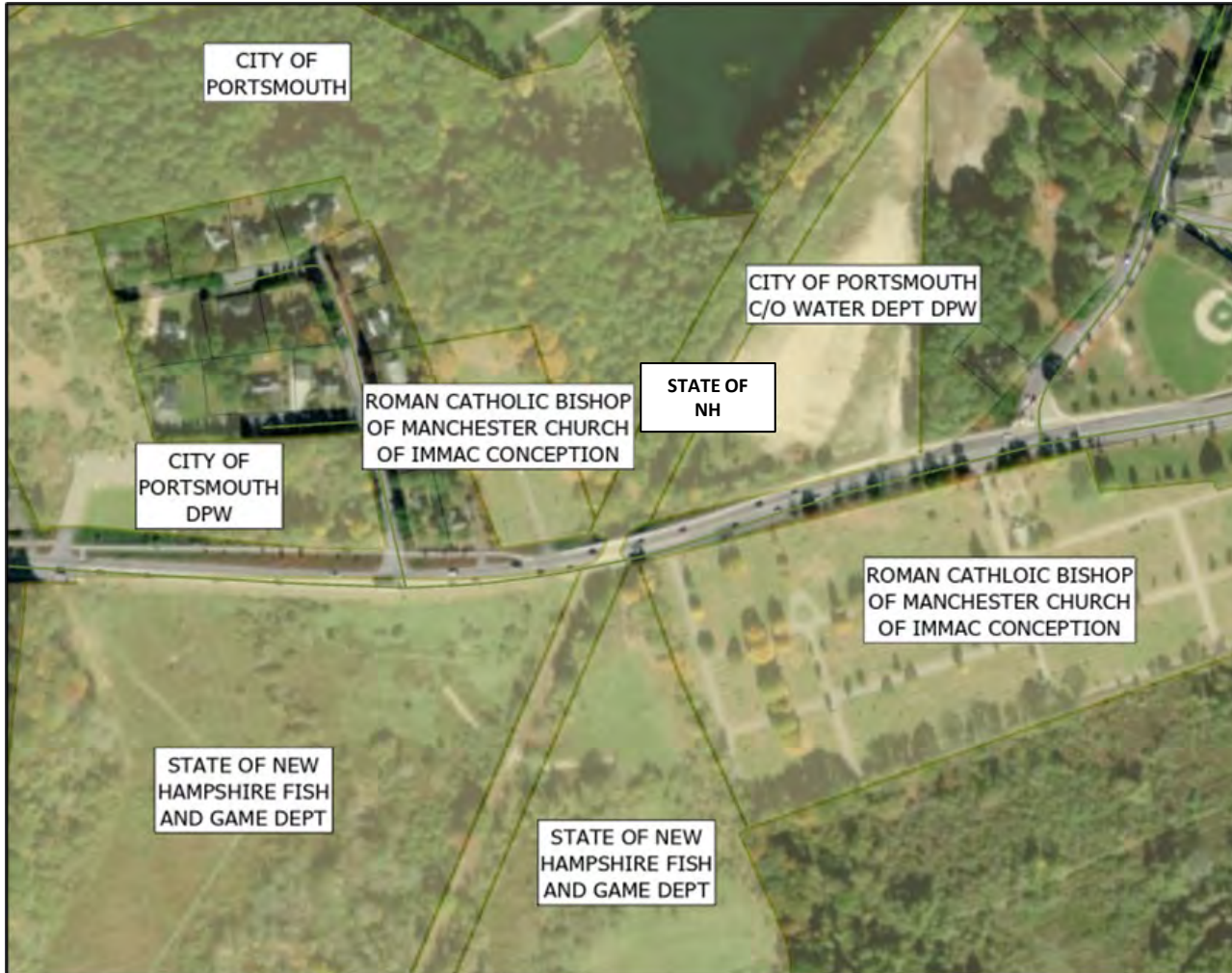
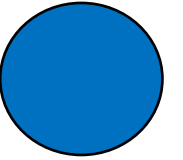
Trail Access Design Concepts Borthwick Ave



To Foley Ave & Trail

Borthwick Ave

Crossings with Trailhead Parking Potential



Site: NH33/Stump Dump

City: Portsmouth

Adjacent public land: Yes (City)

Neighborhood Proximity: Limited

Business Proximity: No

In plans: City Ped/Bike Plan

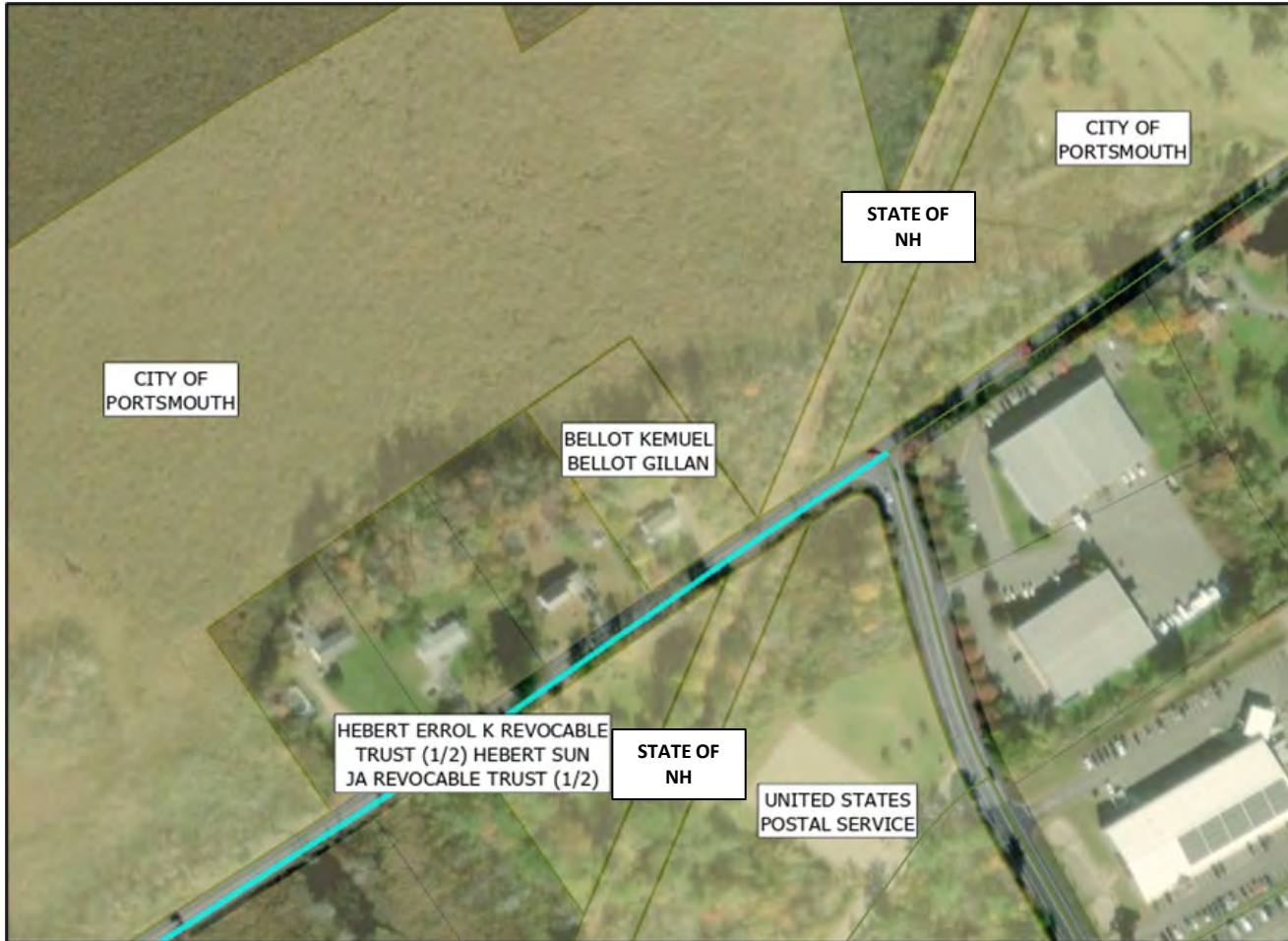
- Phase IA - Portsmouth to North Hampton
- Phase IB - Hampton (North)
- Phase IC - Seabrook
- Phase ID - Hampton Falls to Hampton (South)
- GRANET Conservation and Public Land
- State Owned Parks
- Portsmouth Owned Parks

North to
Downtown

Trail Access Design Concepts NH33/Stump Dump



Crossings with Trailhead Parking Potential



Site: Banfield Road

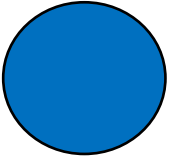
City: Portsmouth

Adjacent public land: Yes (City)

Neighborhood Proximity: Limited

Business Proximity: Industrial

In plans: City Ped/Bike Plan



North to
Portsmouth

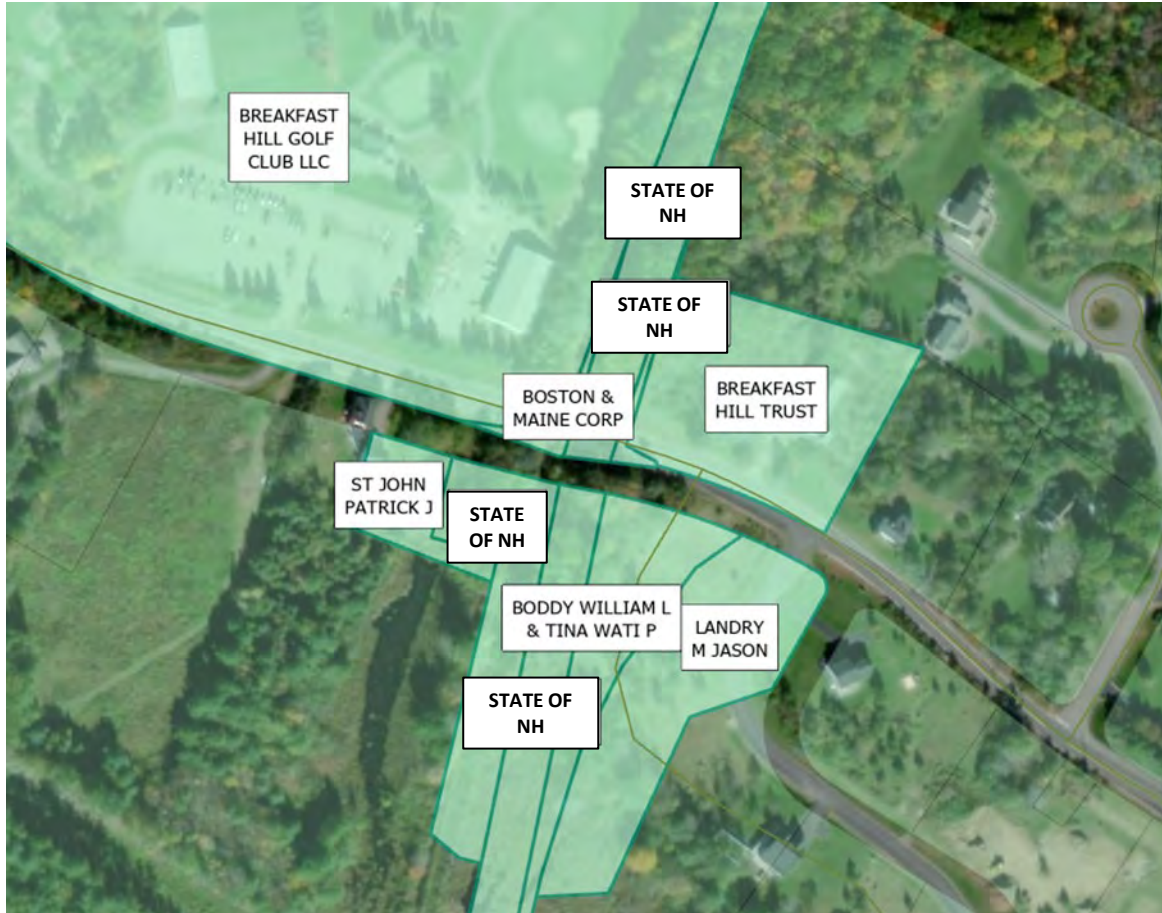
South to
Hampton

Rail Trail

Trail Access
Design Concepts
Banfield Road



Crossings with Trailhead Parking Potential



Site: Breakfast Hill Road

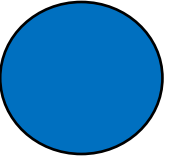
City: Greenland

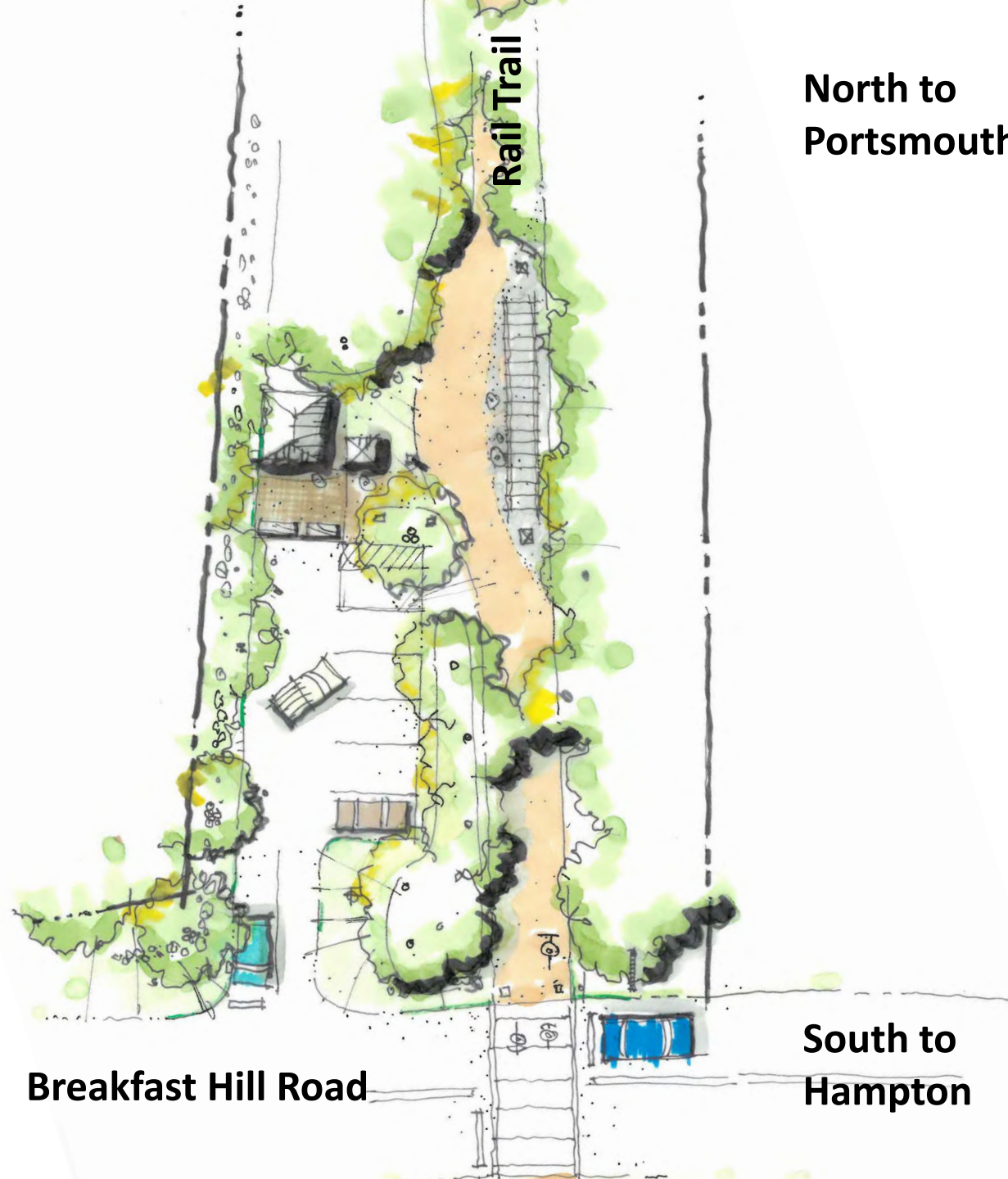
Adjacent public land: Yes (State)

Neighborhood Proximity: Yes

Business Proximity: Limited

In plans: No





North to
Portsmouth

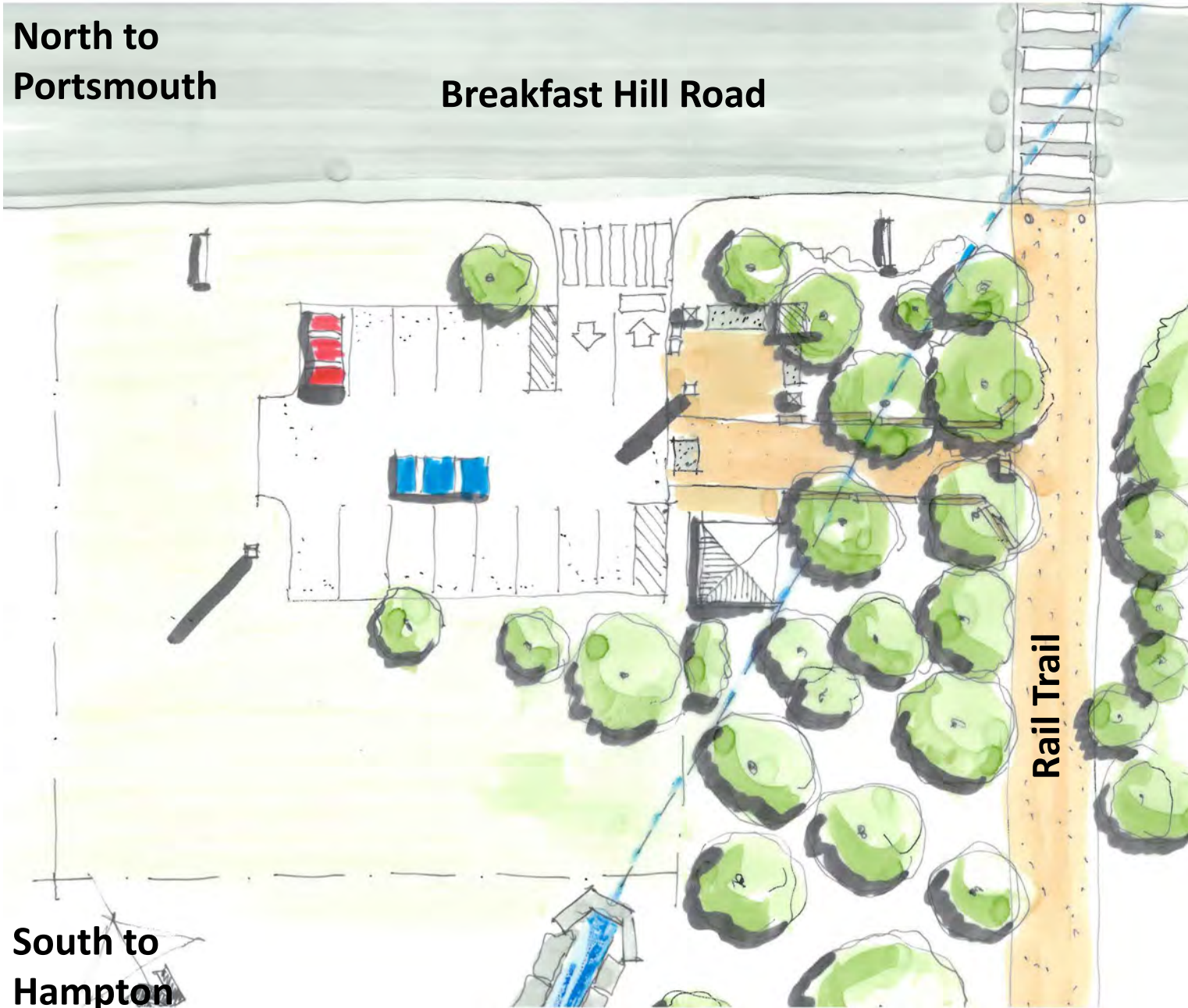
Trail Access Design Concepts Breakfast Hill Road North Side Option

South to
Hampton

**North to
Portsmouth**

Breakfast Hill Road

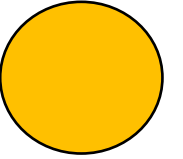
**South to
Hampton**



Trail Access Design Concepts Breakfast Hill Road South Side Option

Trail Access Design Concepts

North Hampton Town Center



Site: Atlantic Avenue/NH111

Town: North Hampton

Adjacent public land: Yes

Neighborhood Proximity: Yes

Business Proximity: Yes

At-Grade: Yes

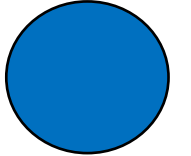
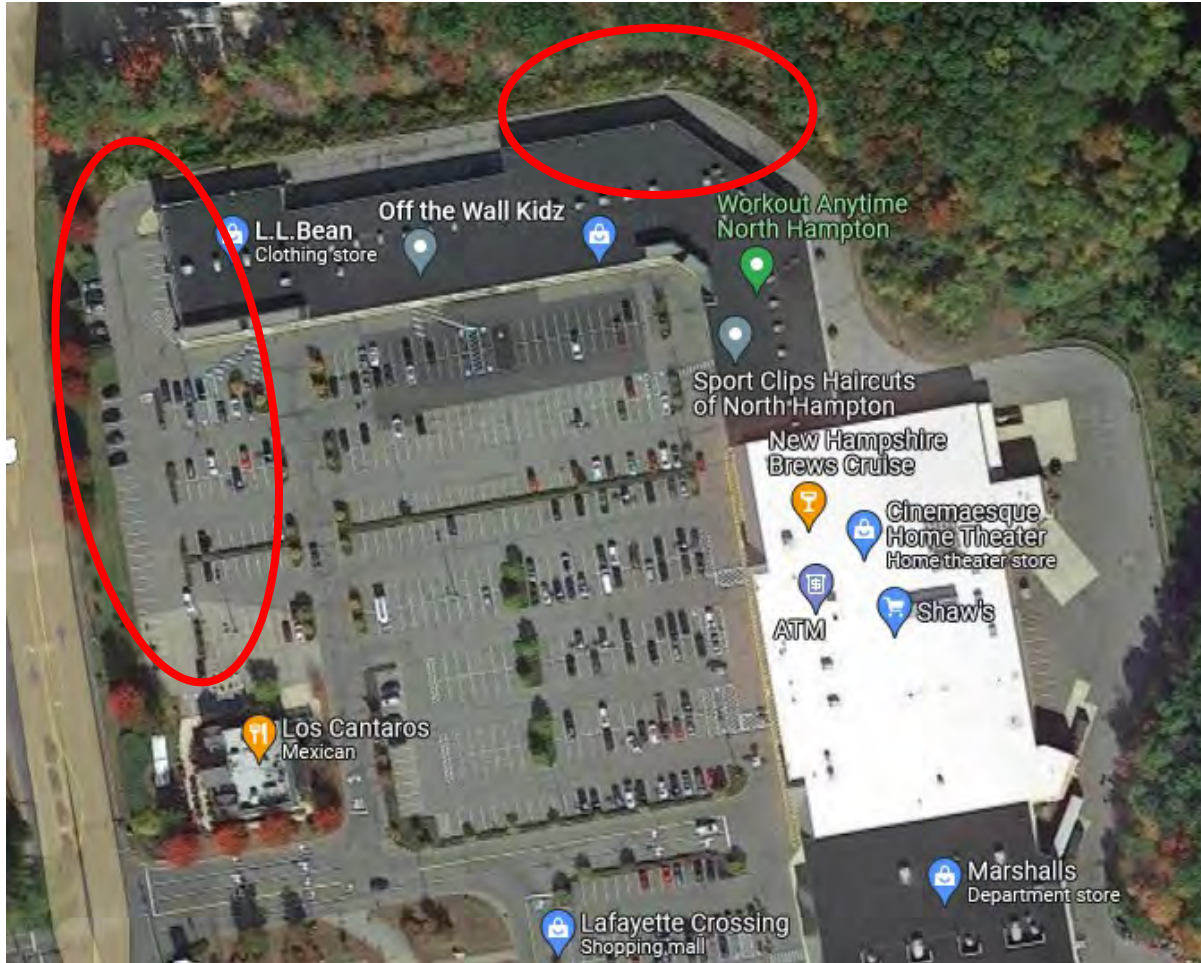
In plans: No but local discussion

Trail Access Design Concepts North Hampton Town Center



Trail Access Design Concepts

LL Bean Plaza



Site: LL Bean Plaza

Town: North Hampton

Adjacent public land: Yes

Neighborhood Proximity: Limited

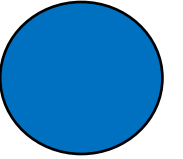
Business Proximity: Yes

In plans: No but local discussion

Trail Access Design Concepts LL Bean Plaza



Crossings with Trailhead Parking Potential



Site: Lafayette Road/US1

Town: North Hampton/Hampton

Adjacent public land: Yes

Neighborhood Proximity: Yes

Business Proximity: US1

At-Grade: Crossing separated but site is accessible

In plans: No but local discussion



Lafayette Road/US1

Post Road/NH151

Rail Trail

Trail Access Design Concepts NHDOT Yard Phase 2

Lafayette Road/US1



Rail Trail

Trail Access Design Concepts Hampton Town Center

Site: Hampton Town Center

Town: Hampton

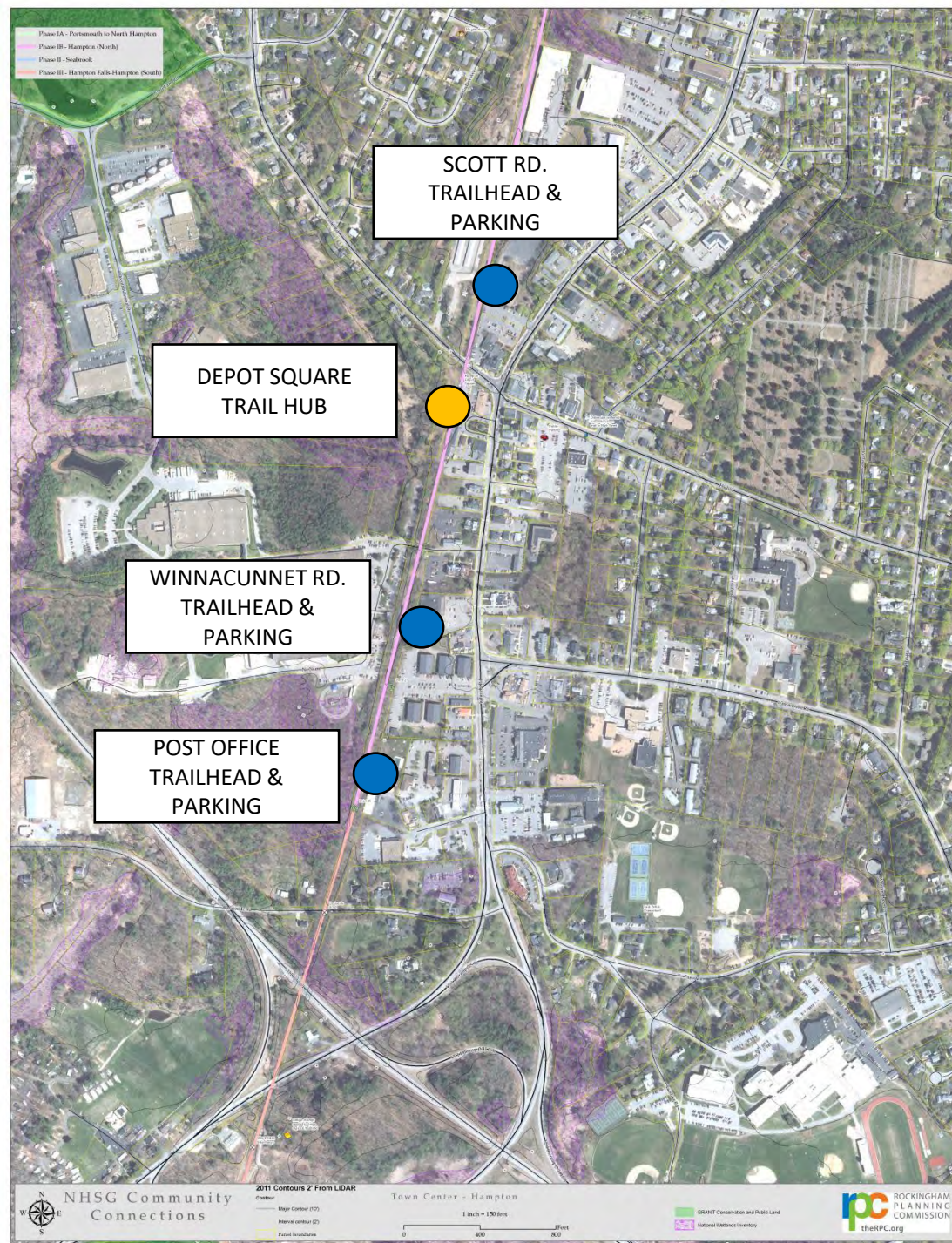
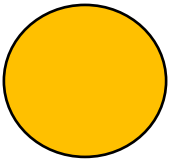
Adjacent public land: No

Neighborhood Proximity: Yes

Business Proximity: Yes

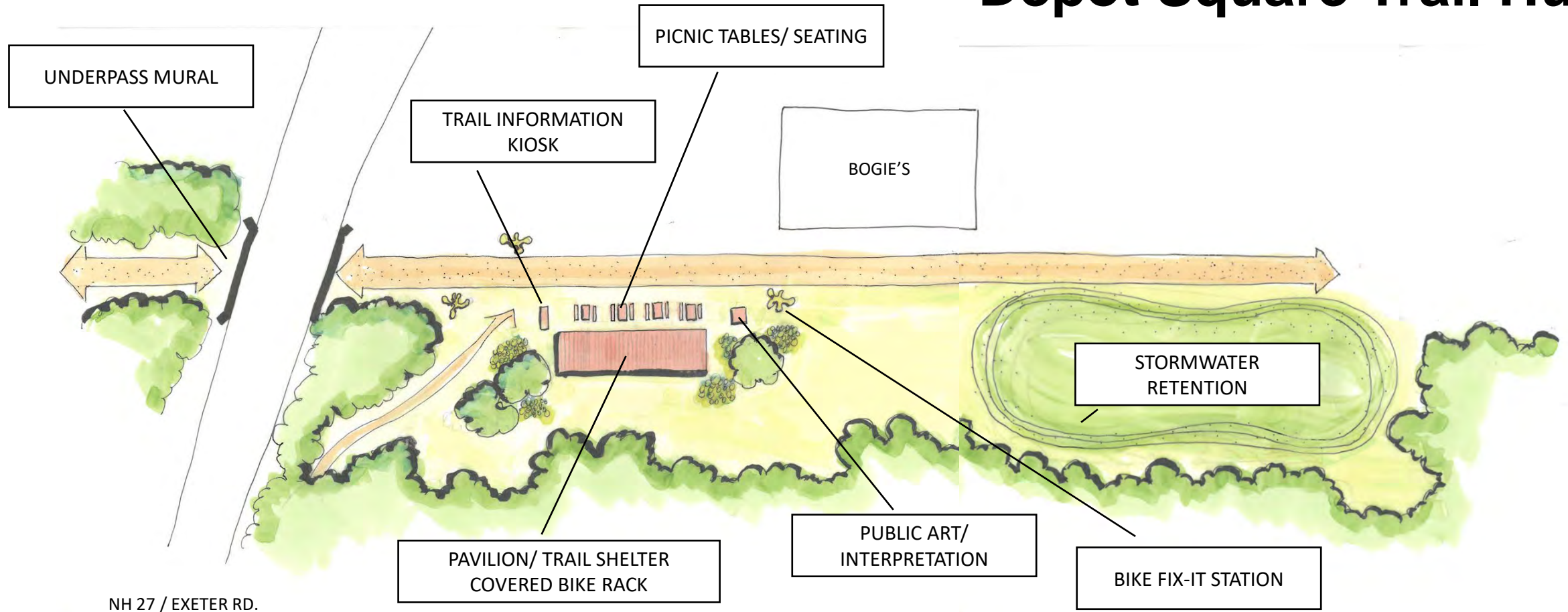
At-Grade: Yes

In plans: Hampton Local Planning



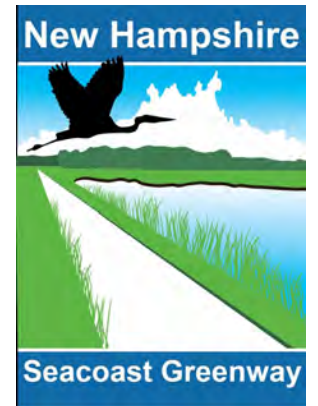
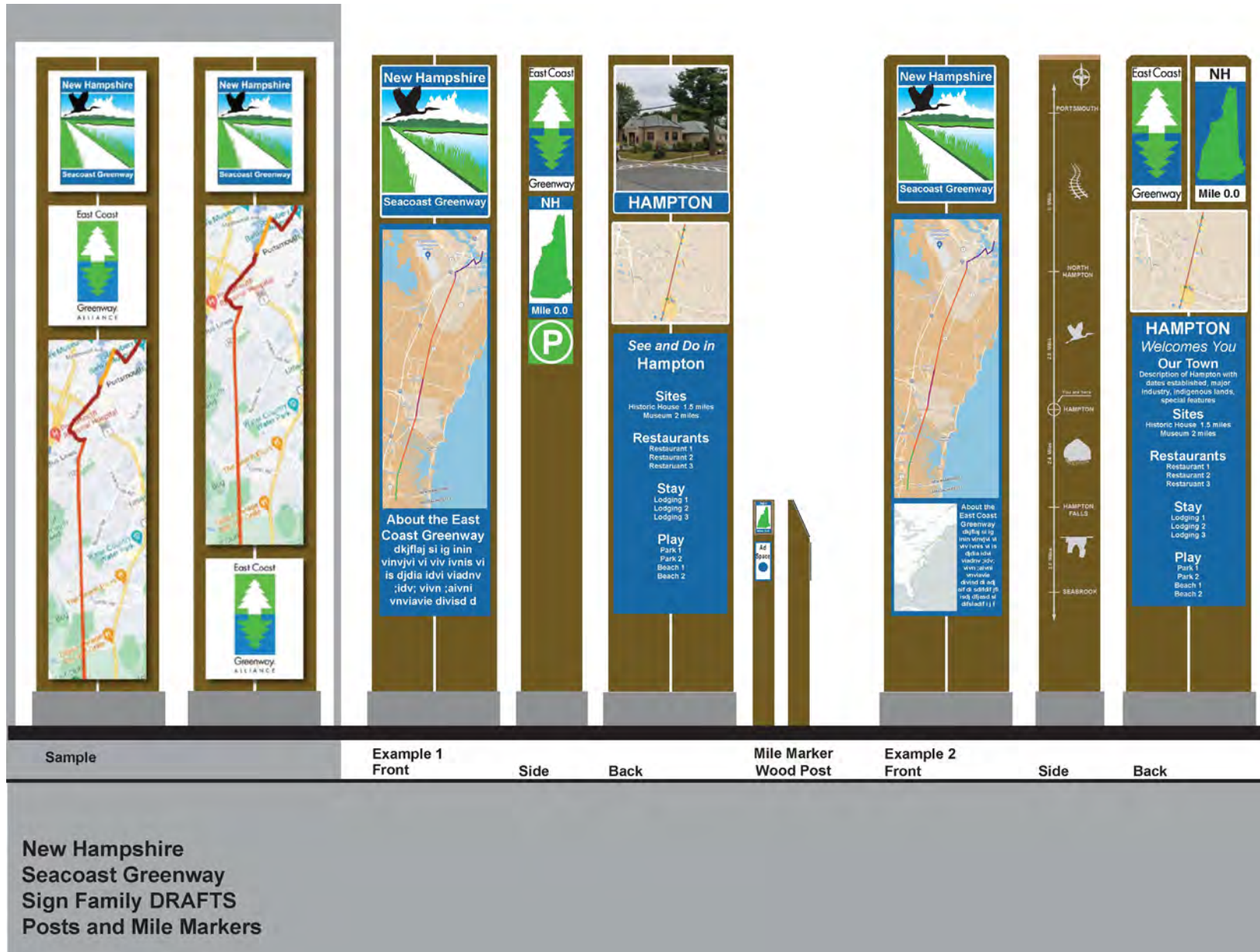


Trail Access Design Concepts Depot Square Trail Hub



NH 27 / EXETER RD.

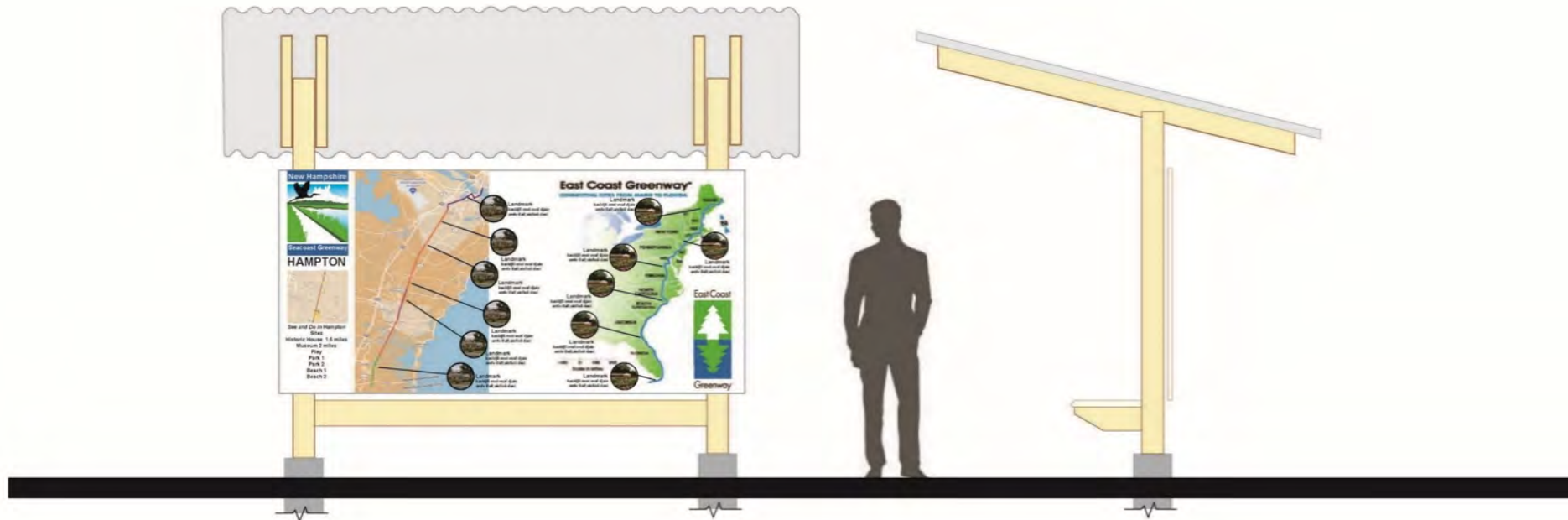
NHSG Signage Family Concepts



NHSG Signage Family Concepts



NHSG Signage Family Concepts



New Hampshire
Seacoast Greenway
Sign Family DRAFTS
Trail Kiosk

NHSG Signage Family Concepts



TRAIL ID +
WATERWAY
NAME



TRAIL ID +
FEATURE
NAME



TRAIL ID
OVERPASS AS
SEEN BY VEHICLES

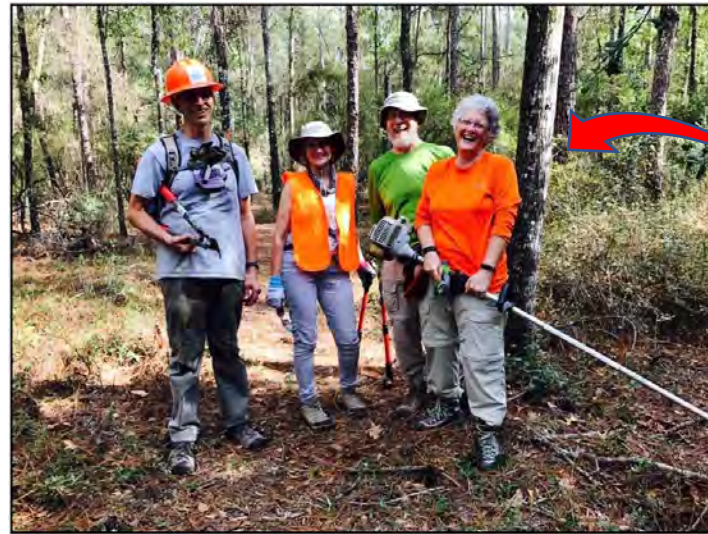


TRAIL ID
UNDERPASS WITH DISTANCE TO NEXT ACCESS &
NAME OF ROADWAY

National Park Service Technical Assistance Grant

NPS Rivers, Trails & Conservation Assistance Program

NHSGA Nonprofit Trail Group Development



Not here yet, but
getting there...

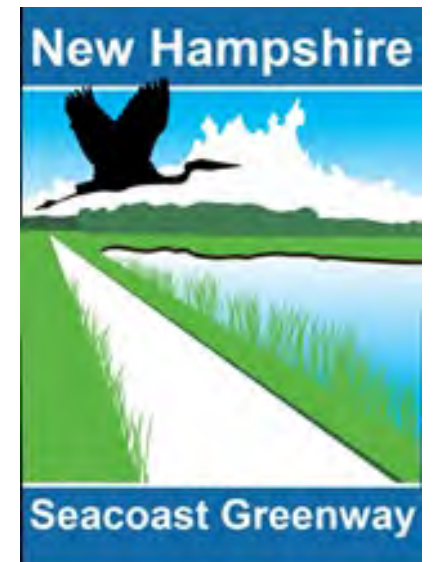


NH Seacoast Greenway Alliance

New Regional Trail Nonprofit

NHSG Alliance Roles

- Advocate for and promote the trail
- Recruit and organize volunteers
- Work with towns on trail maintenance and amenities
- Develop funding including Adopt a Trail program



Next Steps

- **Wrap up work with NPS on Signage Plan**
- **Work with towns and NHDOT on Trailhead development**
- **NHSGA volunteer program development**
- **NHSGA funding and adopt a trail program development**
- **Participate in Hampton Phase 1B design process**
- **Collaborate with NHDES/NHCP on Marsh segment evaluation**

Follow-Up Questions?

Scott Bogle, RPC
sbogle@therpc.org

Julie Isbill, NPS/RTCA
Julie_isbill@nps.gov

Cindi Hron, NPS/RTCA
cindihron@gmail.com

Seth McNally, NHSGA
Seth.mcnally@gmail.com

