

# New Hampshire Seacoast Greenway Community Connections Design Workshop #2



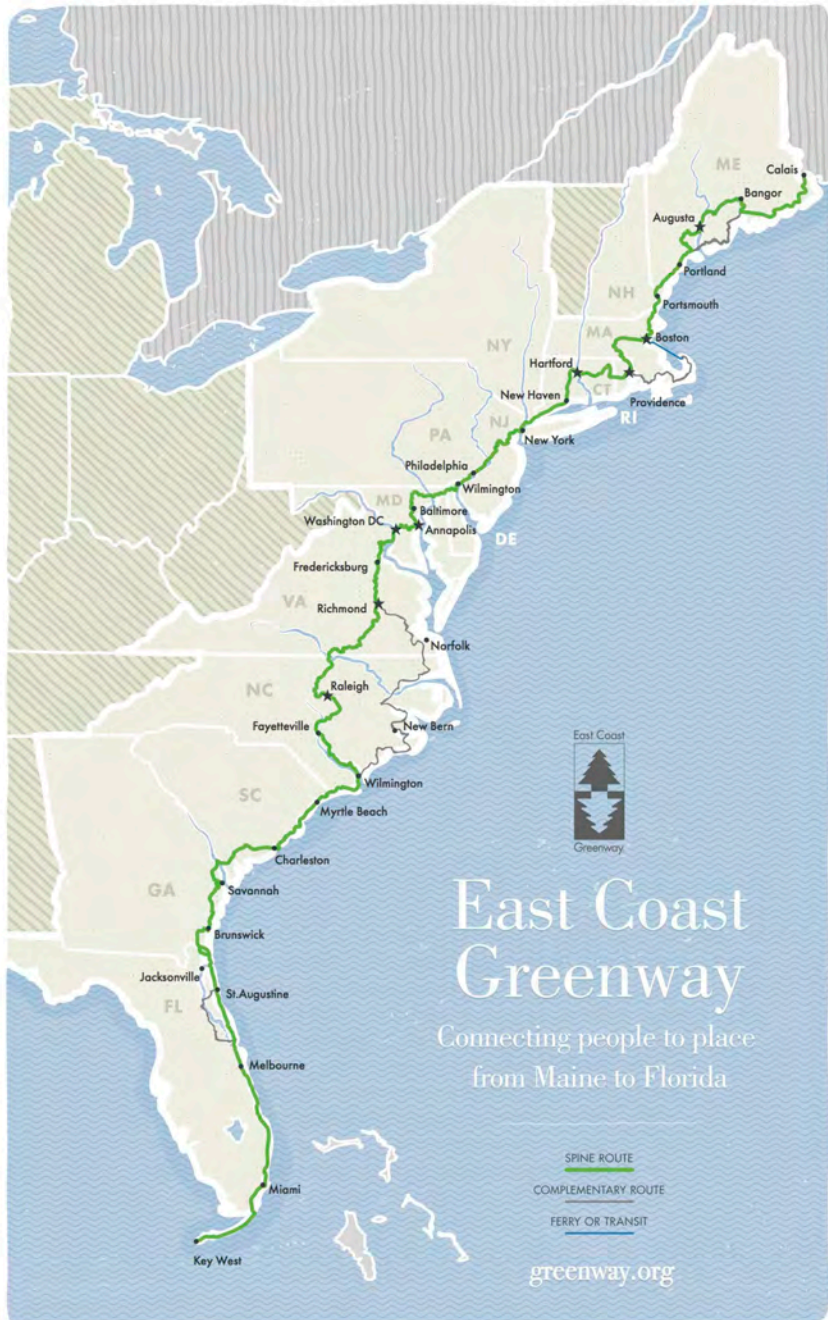
North Hampton Town Hall  
October 21, 2022





# East Coast Greenway

*The East Coast Greenway is envisioned as an urban Appalachian Trail, extending 3,000 miles from Calais, ME to Key West, FL, connecting major cities, small towns and natural areas along the East Coast.*



**Down East  
Sunrise Trail,  
Maine**



**Florida Keys  
Overseas  
Heritage Trail,  
Florida**







# The Greenway Through New England

*321 miles completed off-road*

*199 miles in pipeline*

*58 miles alignment identified*

*169 miles current gap (on-road for now)*

*Connects New York City, New Haven, Hartford, Providence, Worcester, Boston, Newburyport, Portsmouth, Portland*







# NH Seacoast Greenway Summary of Project Phases



## **Phase IA – North Hampton - Ports (8 mi)**

*Design and permitting in progress*

*Construction 2023-2024*



## **Phase IB – Hampton (1.6 mi)**

*Design and permitting in progress*

*Construction 2024*



## **Phase II – Seabrook (2.4 mi)**

*In TYP for 2030*



## **Phase III – Hampton Falls Marsh (2.3 mi)**

*In TYP for 2032*

# National Park Service Technical Assistance Grant

*NPS Rivers, Trails & Conservation Assistance Program*

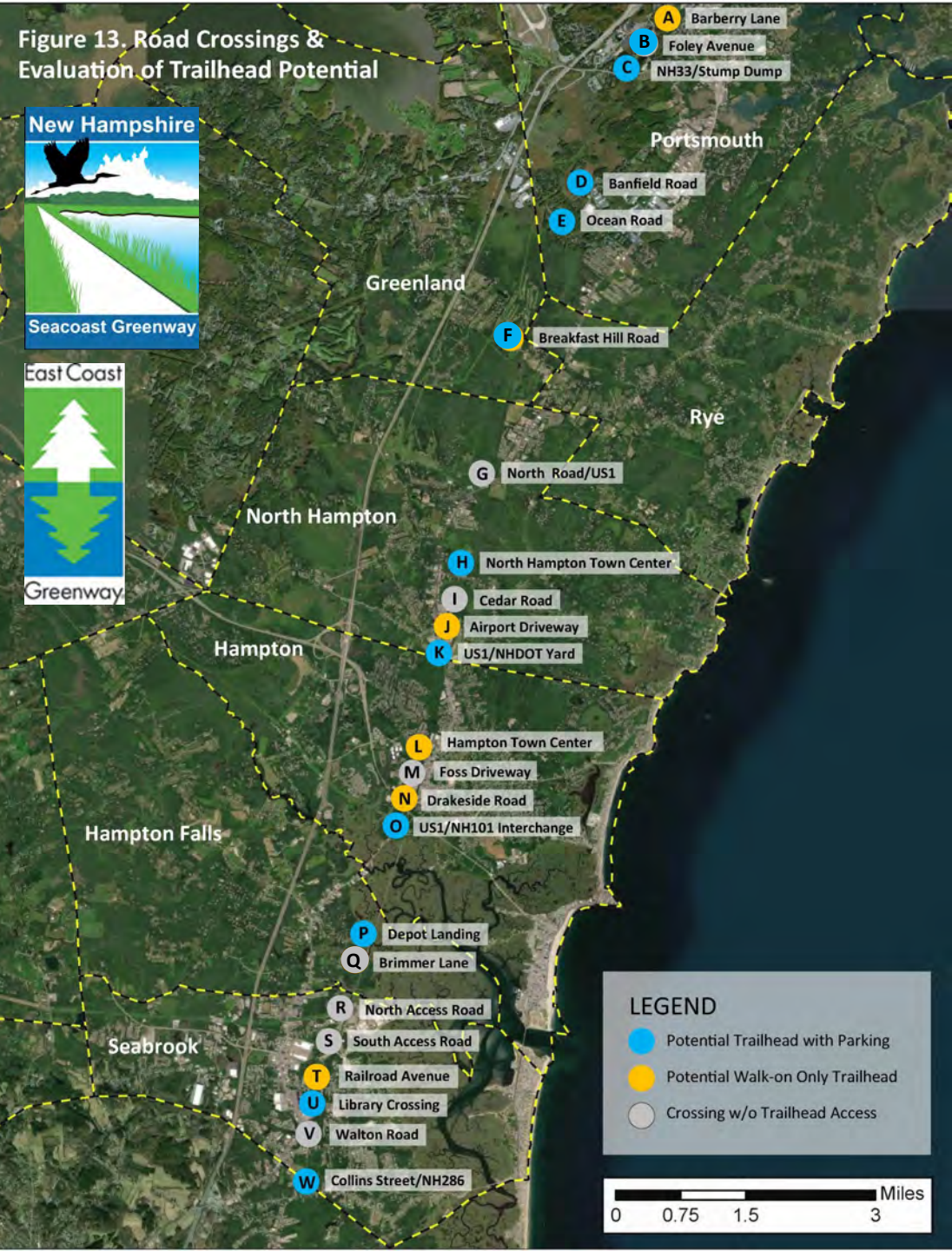
## Project Workgroups

- **Community Connections & Trail Access Points**
- **Trail Signage Planning**
- **NHSGA Organizational Development**





Figure 13. Road Crossings & Evaluation of Trailhead Potential



# NH Seacoast Greenway Trailhead Access Analysis

23 Road Crossings of Hampton Branch between Portsmouth and Seabrook

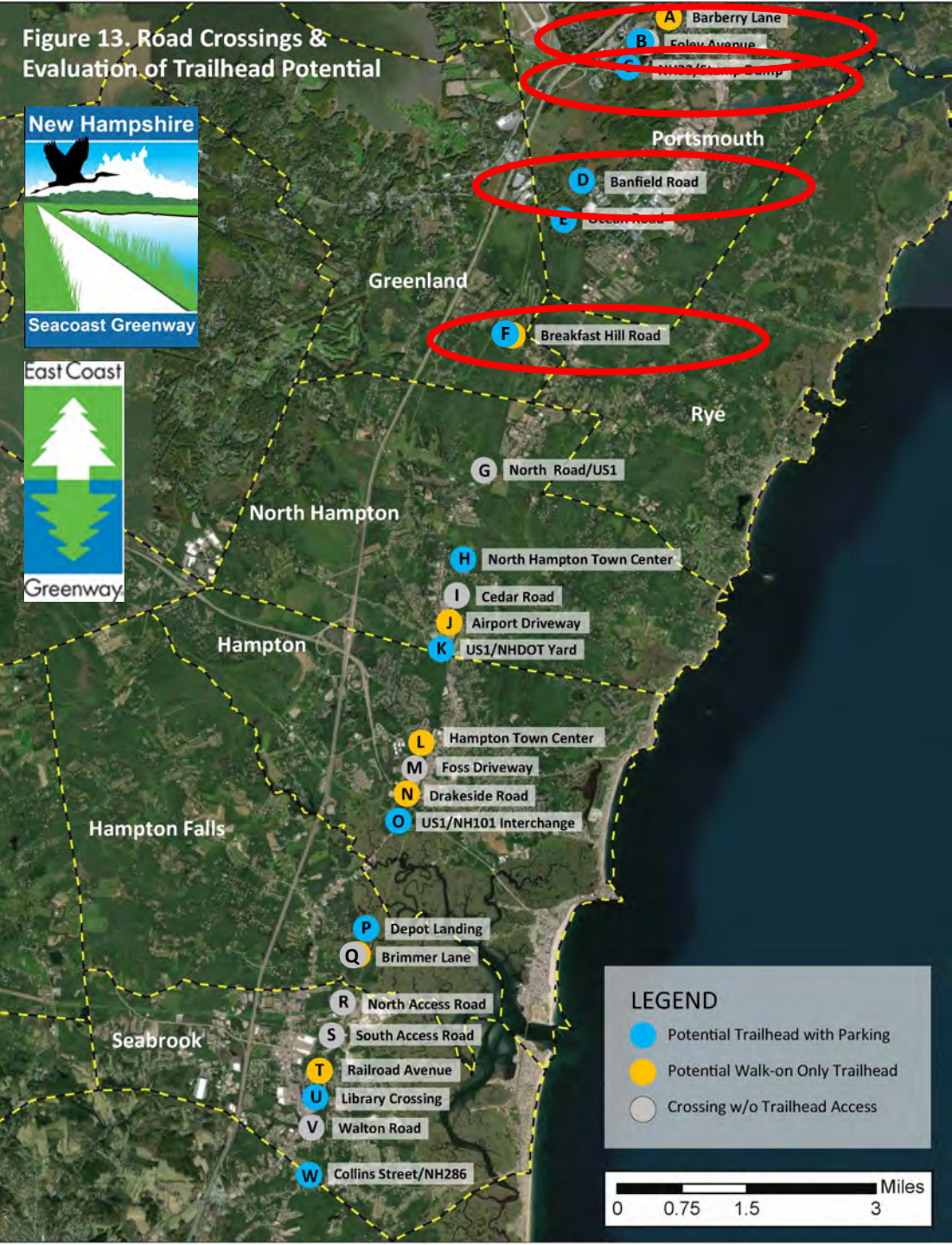
Potential trailhead with parking (11) 

Potential walk-on only trailhead (5) 

Crossing without trailhead potential (7) 



Figure 13. Road Crossings & Evaluation of Trailhead Potential



# NH Seacoast Greenway Community Connections Design Workshop #1

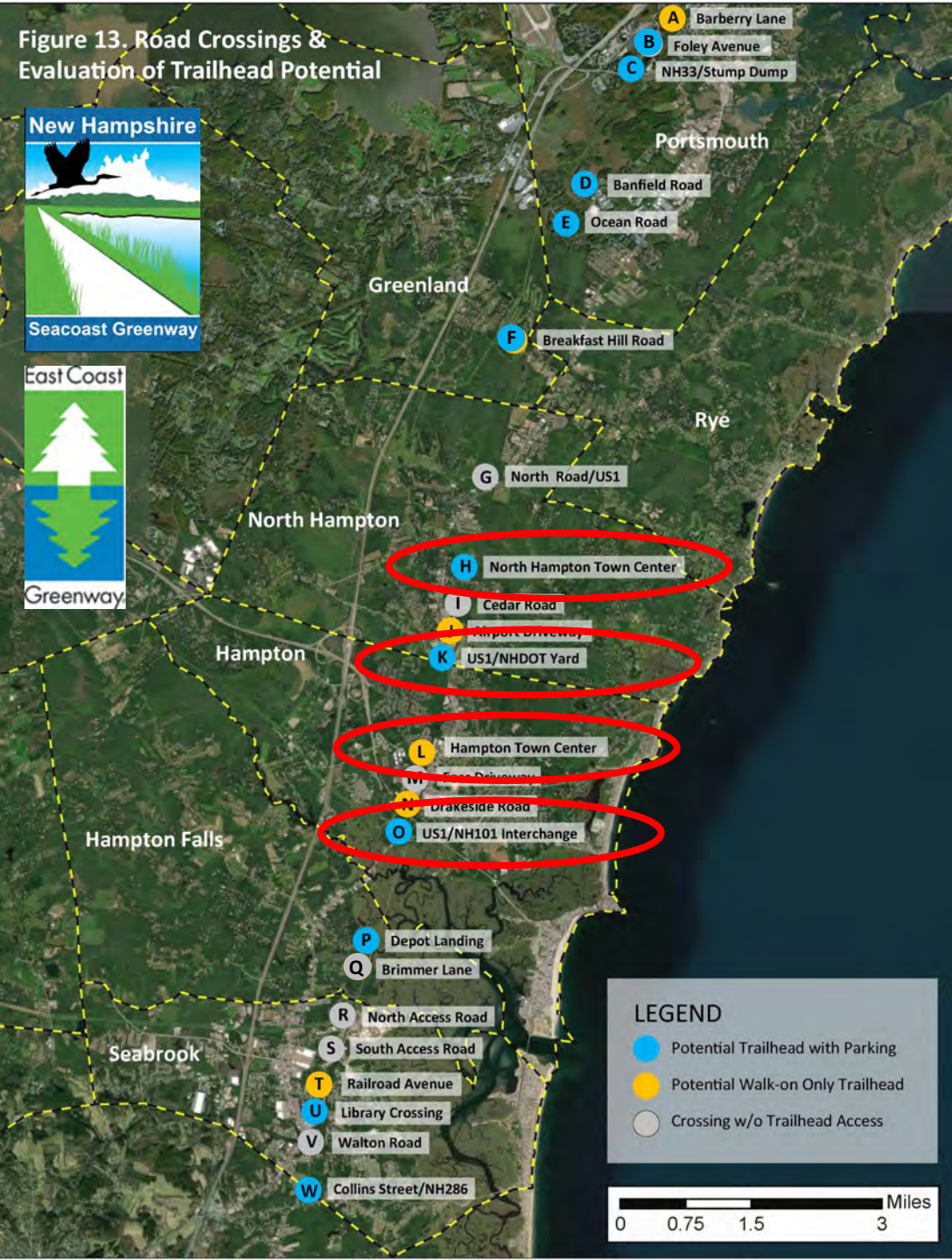
*Portsmouth Public Library  
September 23, 2022*

## Focus on Four Trail Access Points

-  Borthwick Avenue
-  NH33/Stump Dump
-  Banfield Road
-  Breakfast Hill Road



Figure 13. Road Crossings & Evaluation of Trailhead Potential



# NH Seacoast Greenway Community Connections Design Workshop #2

*North Hampton Town Hall  
October 21, 2022*

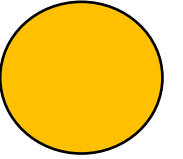
## Focus on Five Trail Access Points

- North Hampton Town Center
- LL Bean Plaza
- Lafayette Road/US1
- Hampton Town Center
- US1/NH101 Interchange



# Trail Access Design Concepts

## North Hampton Town Center



Site: Atlantic Avenue/NH111

Town: North Hampton

Adjacent public land: Yes

Neighborhood Proximity: Yes

Business Proximity: Yes

At-Grade: Yes

In plans: No but local discussion



# Trail Access Design Concepts North Hampton Town Center



Rail Trail

Atlantic Avenue

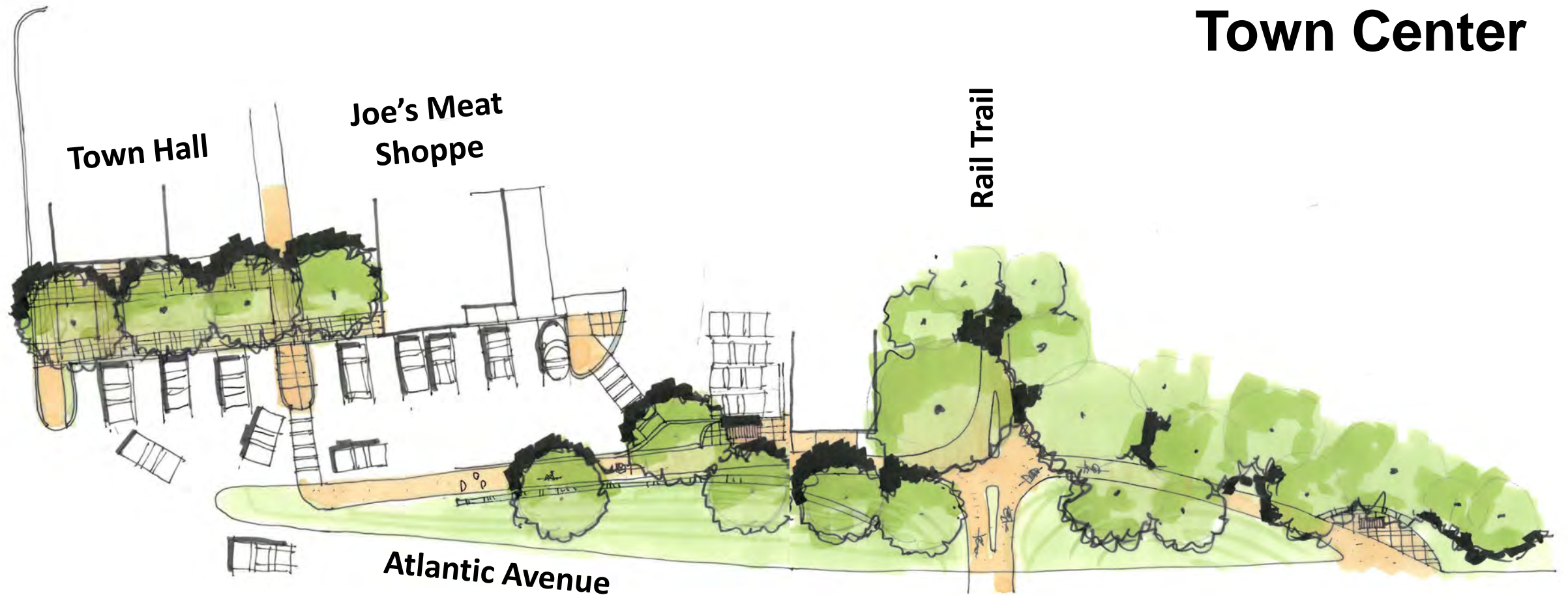


# Trail Access Design Concepts North Hampton Town Center





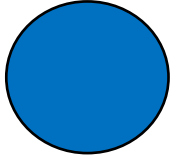
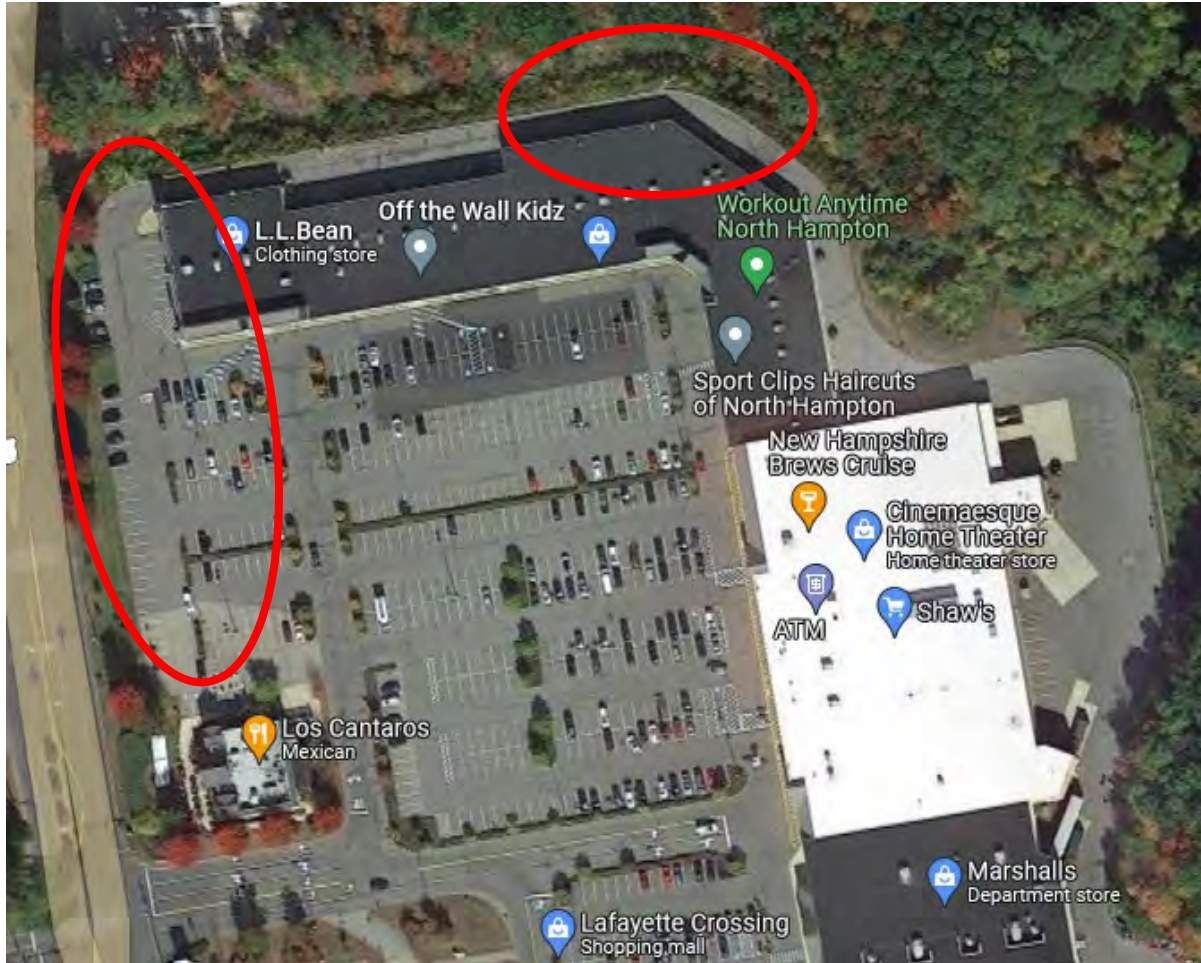
# Trail Access Design Concepts North Hampton Town Center





# Trail Access Design Concepts

## LL Bean Plaza



Site: LL Bean Plaza

Town: North Hampton

Adjacent public land: Yes

Neighborhood Proximity: Limited

Business Proximity: Yes

In plans: No but local discussion



# Trail Access Design Concepts LL Bean Plaza



EZ Clean Carpet  
& Upholstery

Safe Farm Antiques  
Antique store

L.L.Bean  
Clothing store

Off the Wall Kidz

Seacoast Orthodontics

Workout Anytime  
North Hampton

Sport Clips Haircuts  
of North Hampton

New Hampshire  
Browse Guide

Lafayette

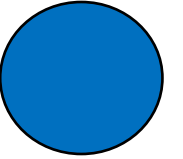


# Trail Access Design Concepts LL Bean Plaza





# Crossings with Trailhead Parking Potential



Site: Lafayette Road/US1

Town: North Hampton/Hampton

Adjacent public land: Yes

Neighborhood Proximity: Yes

Business Proximity: US1

At-Grade: Crossing separated but site is accessible

In plans: No but local discussion



# Trail Access Design Concepts NHDOT Yard at Hampton/North Hampton Town Line







Lafayette Road/US1

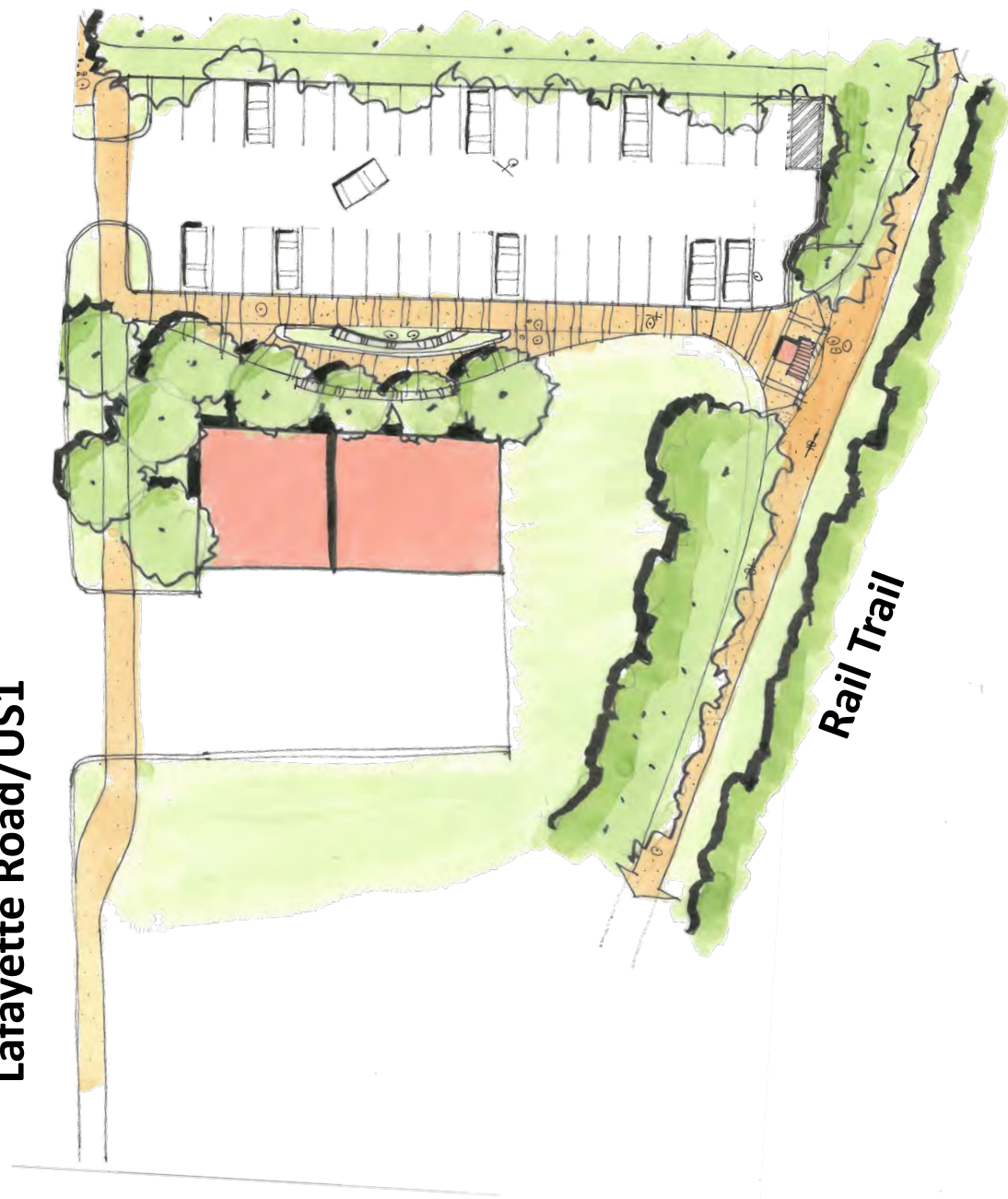
Post Road/NH151

Rail Trail



# Trail Access Design Concepts NHDOT Yard Phase I

Lafayette Road/US1



# Trail Access Design Concepts NHDOT Yard Phase 2

Lafayette Road/US1



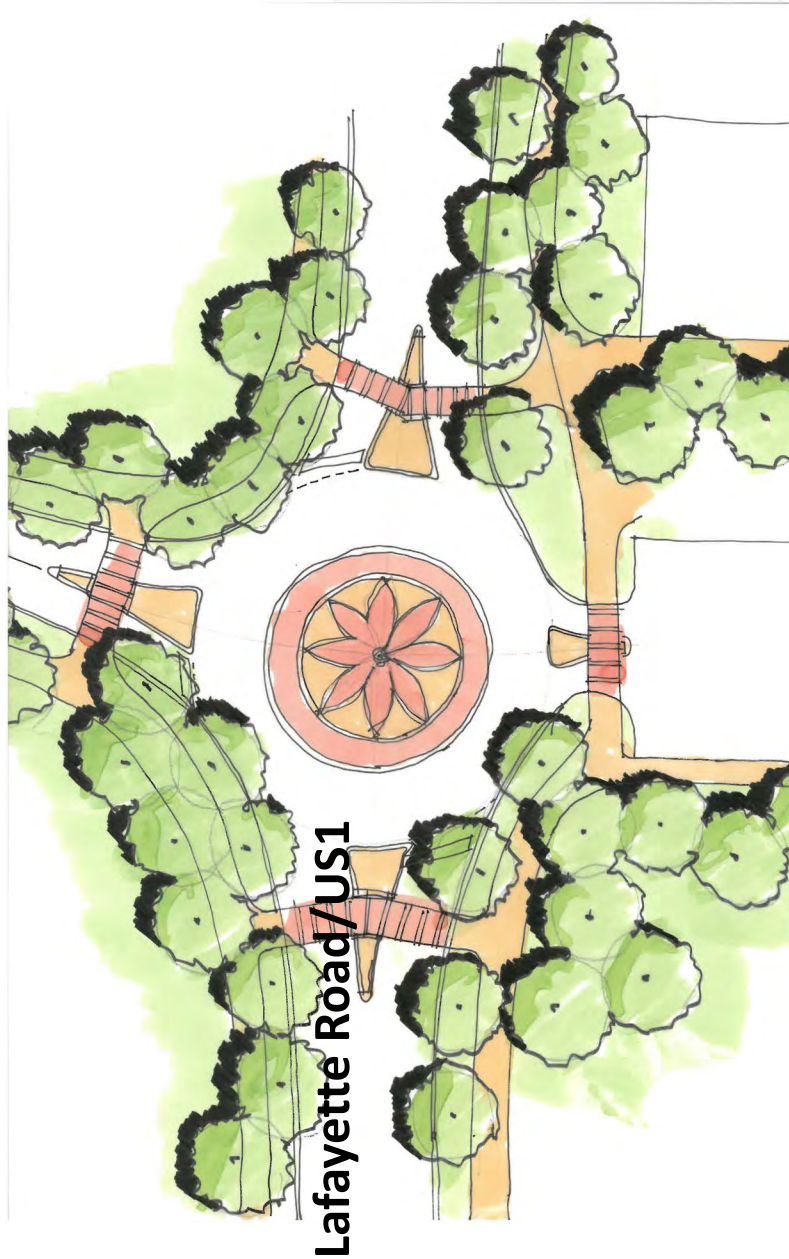
Rail Trail



# Trail Access Design Concepts NHDOT Yard Phase 2 Building Concept

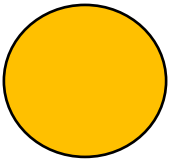


# **Trail Access Design Concepts NHDOT Yard Roundabout Concept for Post Road & Lafayette Road**





# Trail Access Design Concepts Hampton Town Center



Site: Hampton Town Center

Town: Hampton

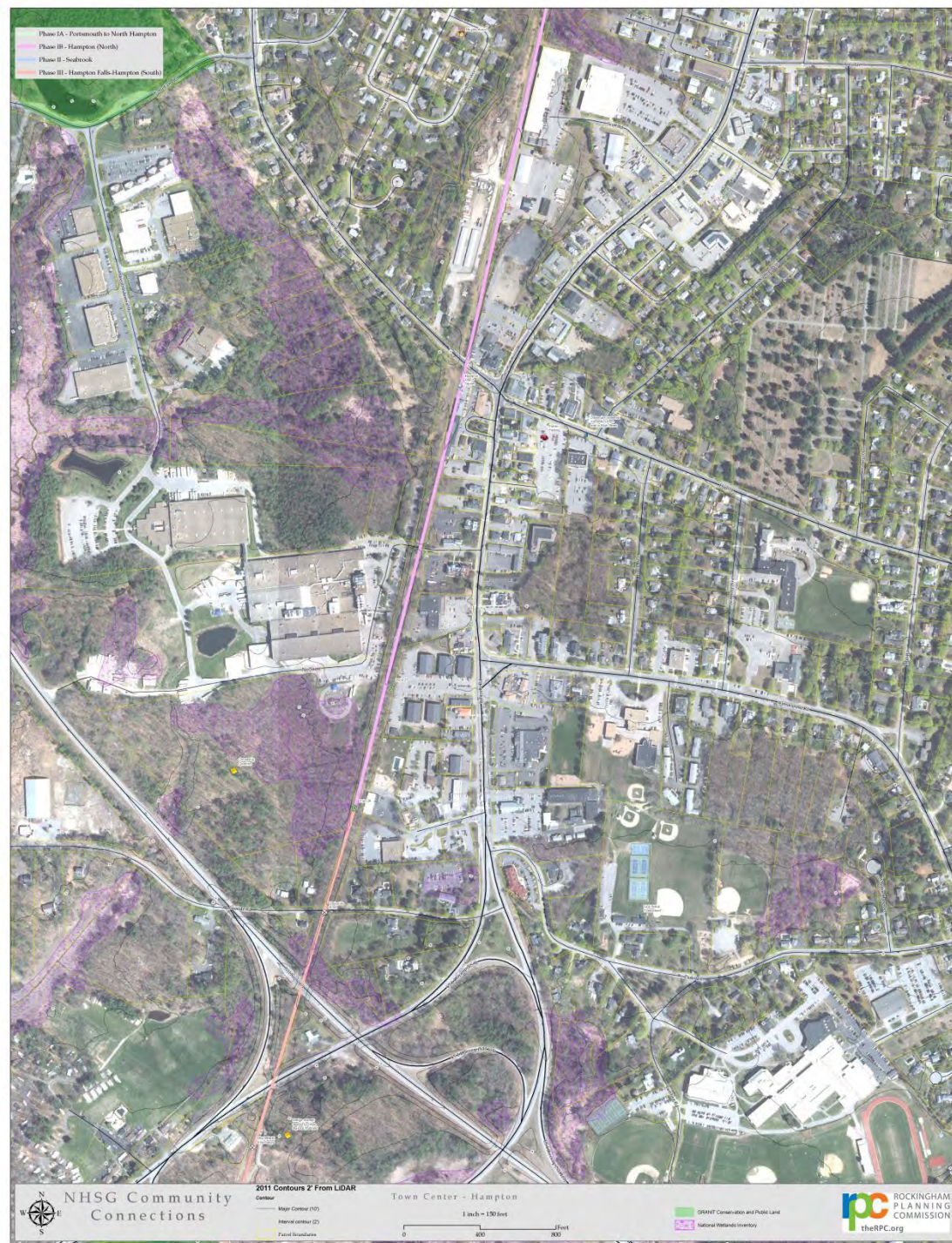
Adjacent public land: No

Neighborhood Proximity: Yes

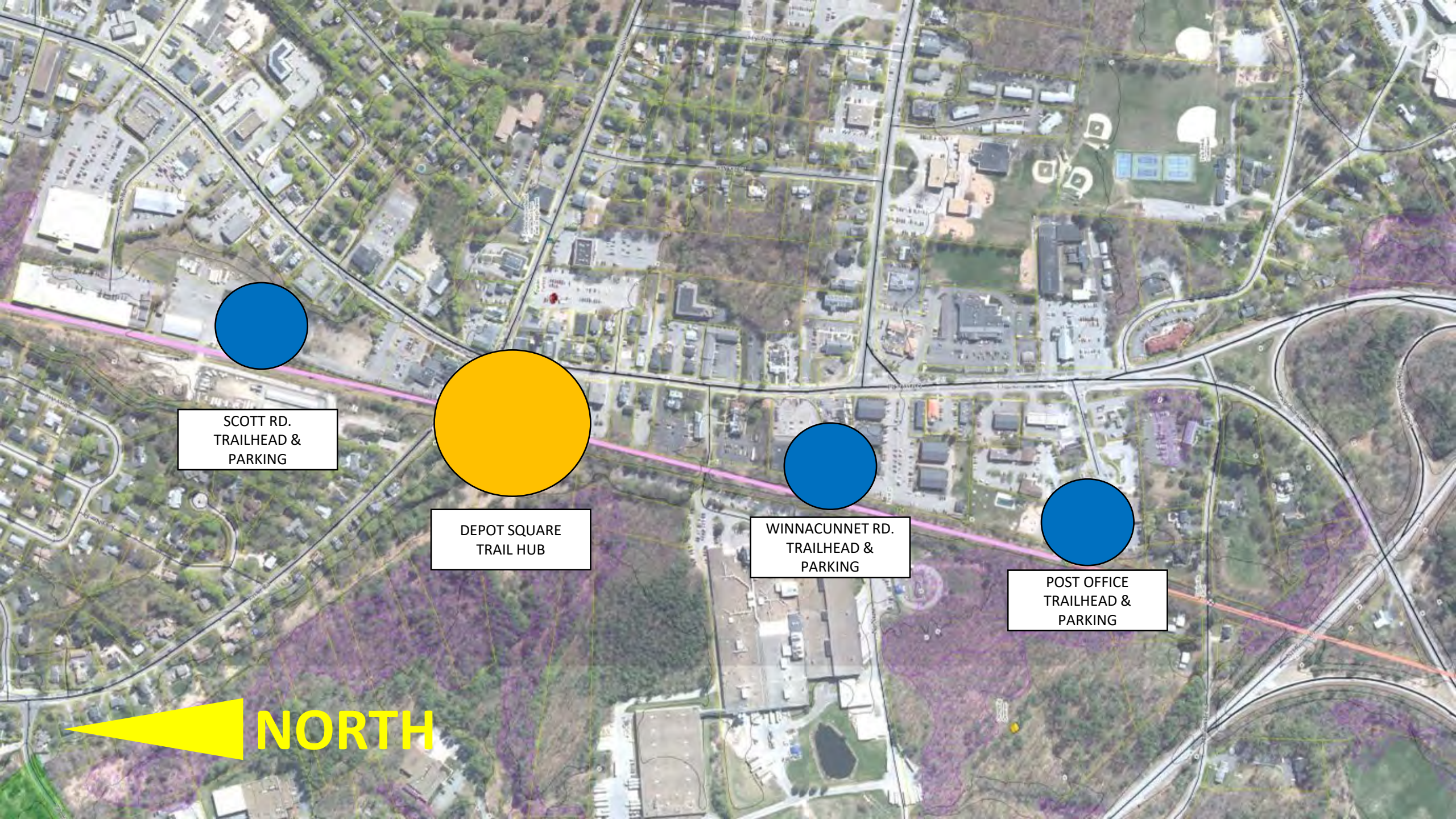
Business Proximity: Yes

At-Grade: Yes

In plans: Hampton Local Planning







SCOTT RD.  
TRAILHEAD &  
PARKING

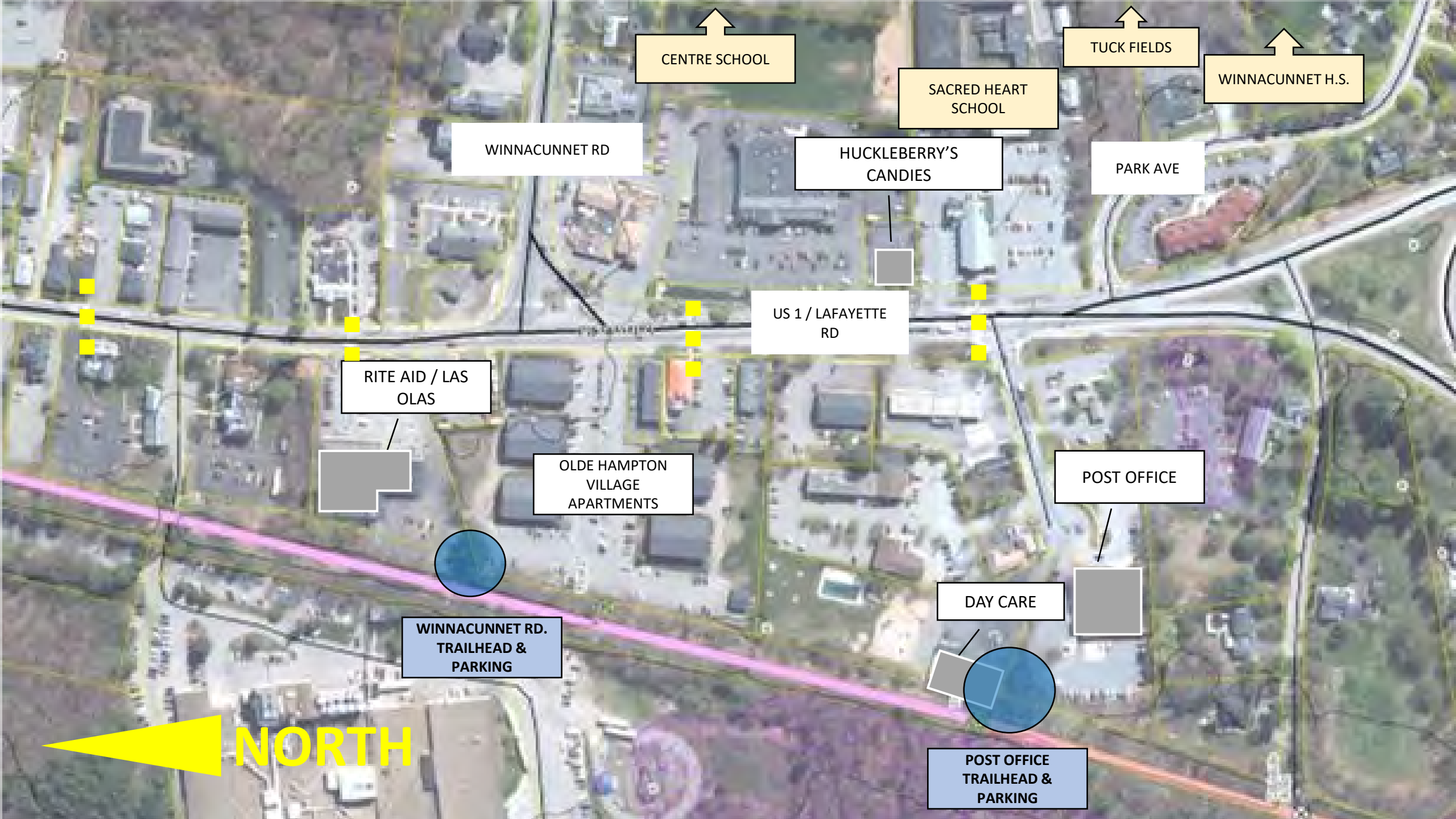
DEPOT SQUARE  
TRAIL HUB

WINNACUNNET RD.  
TRAILHEAD &  
PARKING

POST OFFICE  
TRAILHEAD &  
PARKING

NORTH





CENTRE SCHOOL

TUCK FIELDS

WINNACUNNET H.S.

SACRED HEART  
SCHOOL

WINNACUNNET RD

HUCKLEBERRY'S  
CANDIES

PARK AVE

US 1 / LAFAYETTE  
RD

RITE AID / LAS  
OLAS

OLDE HAMPTON  
VILLAGE  
APARTMENTS

POST OFFICE

DAY CARE

WINNACUNNET RD.  
TRAILHEAD &  
PARKING

POST OFFICE  
TRAILHEAD &  
PARKING

NORTH

SCOTT RD.

HANNAFORD

US 1 / LAFAYETTE  
RD

PUBLIC PARKING

OLD SALT

DEPOT SQUARE

SCOTT RD.  
TRAILHEAD &  
PARKING

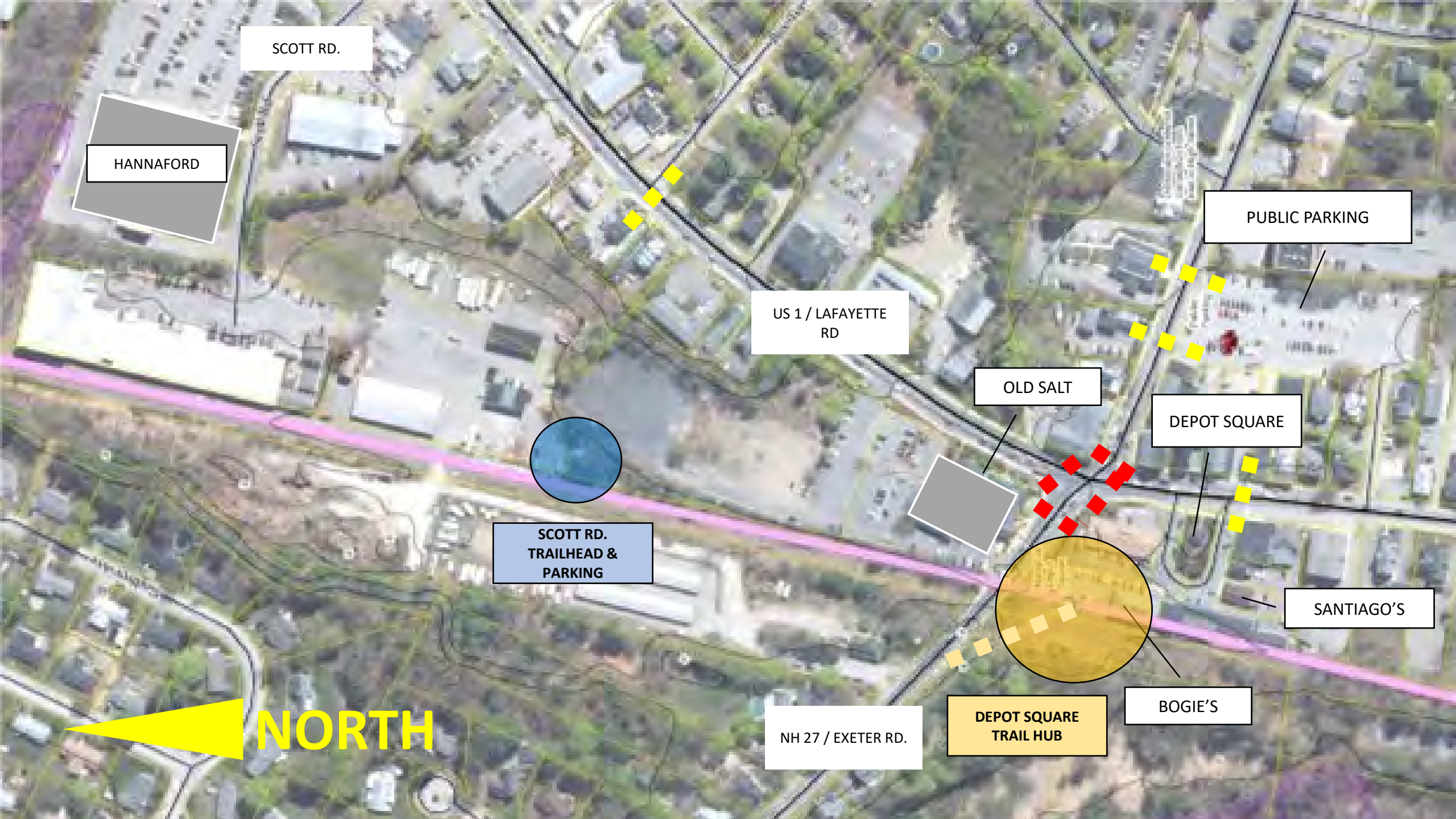
SANTIAGO'S

NH 27 / EXETER RD.

DEPOT SQUARE  
TRAIL HUB

BOGIE'S

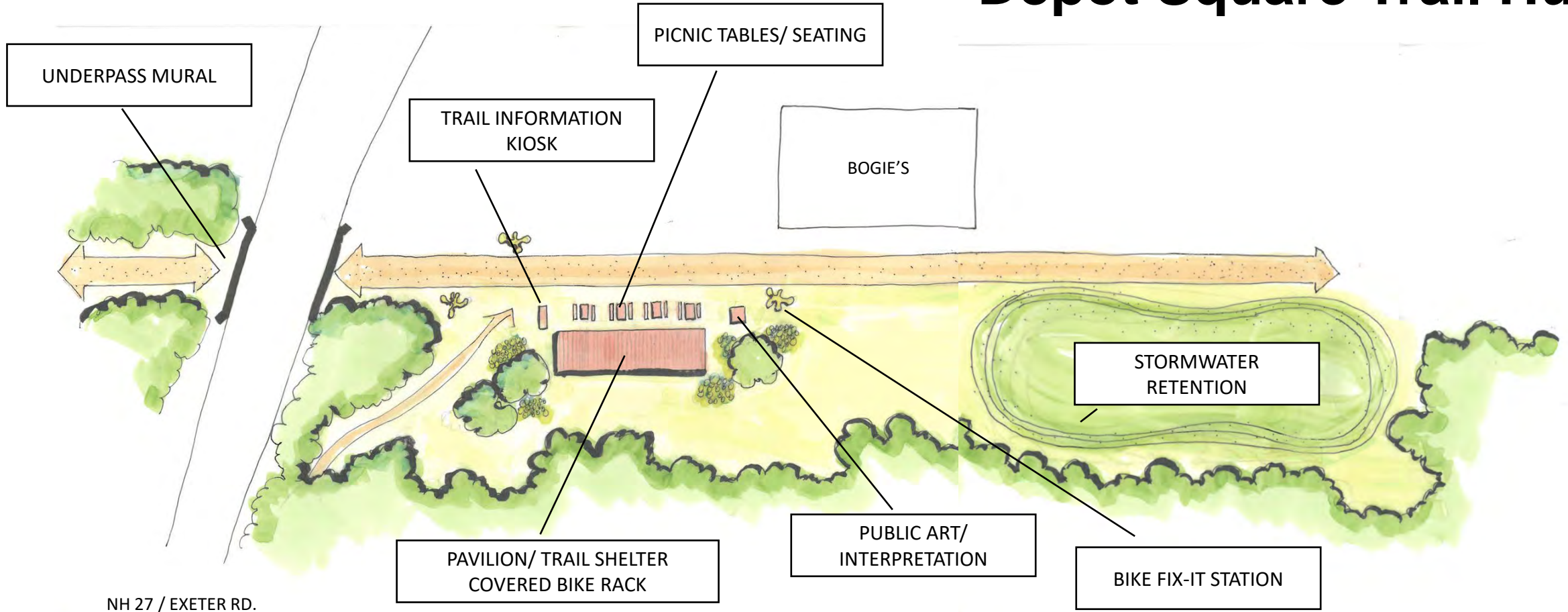
 NORTH





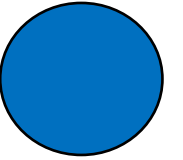


# Trail Access Design Concepts Depot Square Trail Hub



NH 27 / EXETER RD.

# Access Potential at Road Crossings



Site: US1/NH101 Interchange

Town: Hampton

Adjacent public land: Yes

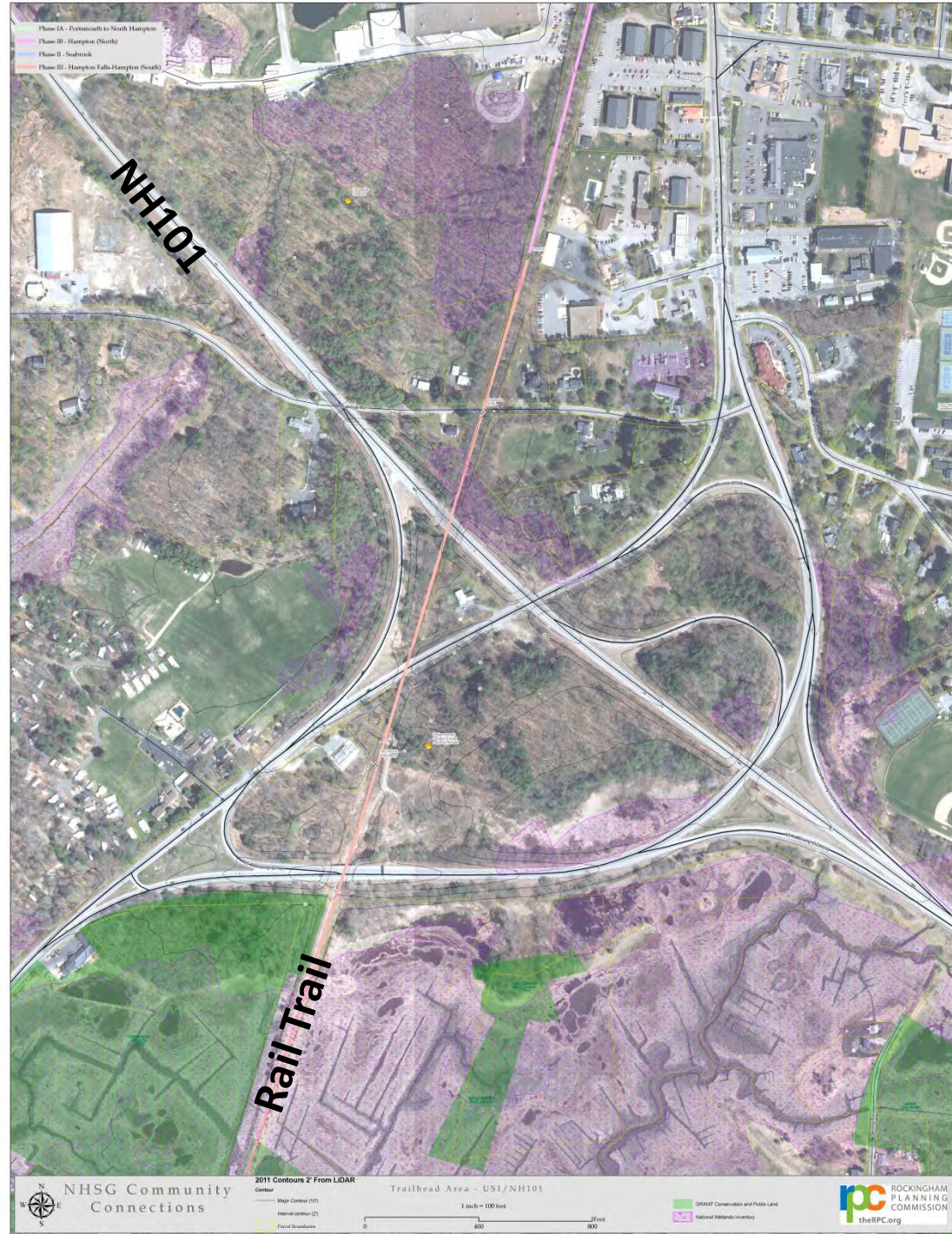
Neighborhood Proximity: Yes

Business Proximity: Yes

In plans: US1/NH101 Interchange  
Realignment Study (2013)



# Trail Access Design Concepts Hampton US1/NH101 Interchange





# Trail Access Design Concepts Hampton US1/NH101 Interchange





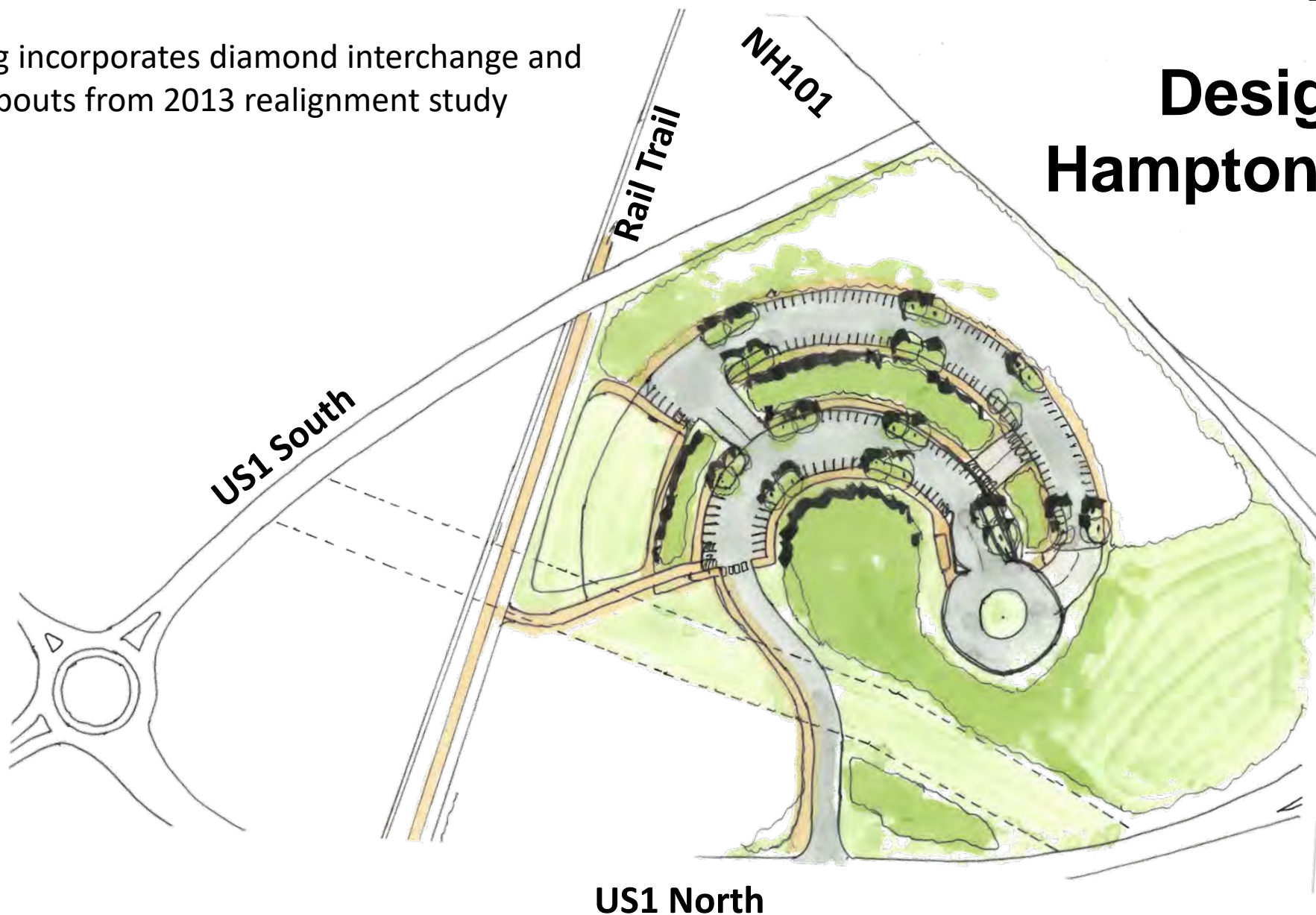
# Trail Access Design Concepts Hampton US1/NH101 Interchange





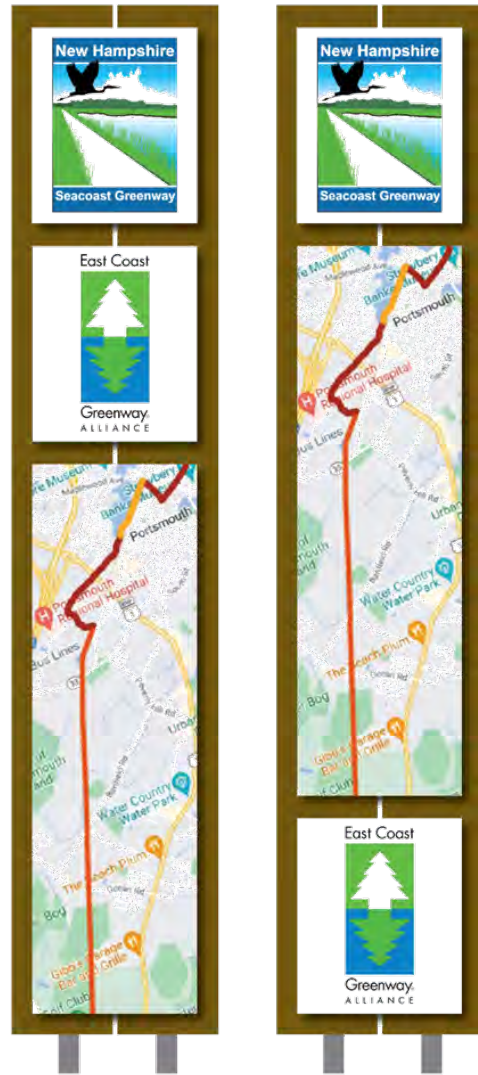
Drawing incorporates diamond interchange and roundabouts from 2013 realignment study

# Trail Access Design Concepts Hampton US1/NH101 Interchange



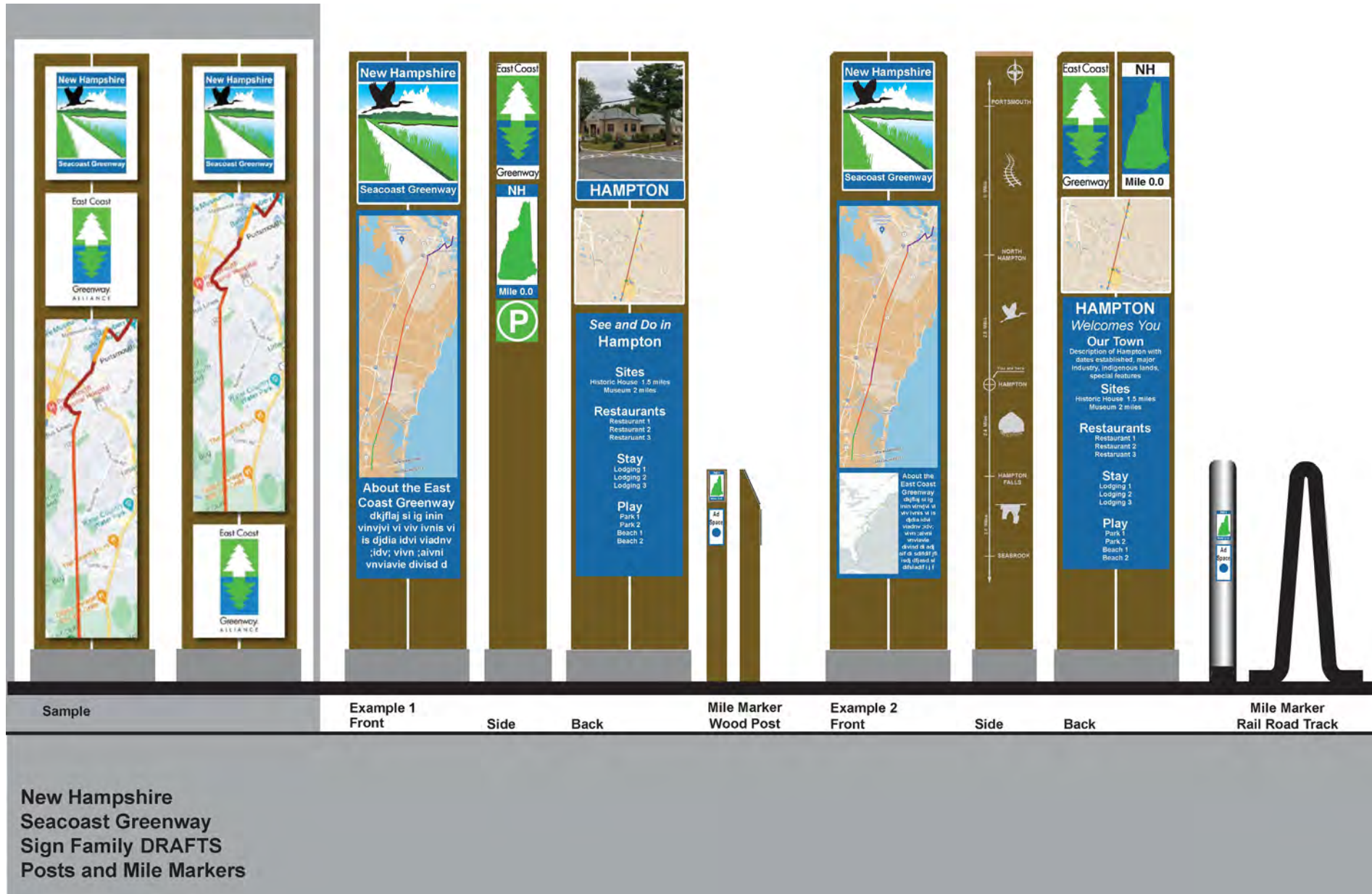


# Trail Signage Concepts

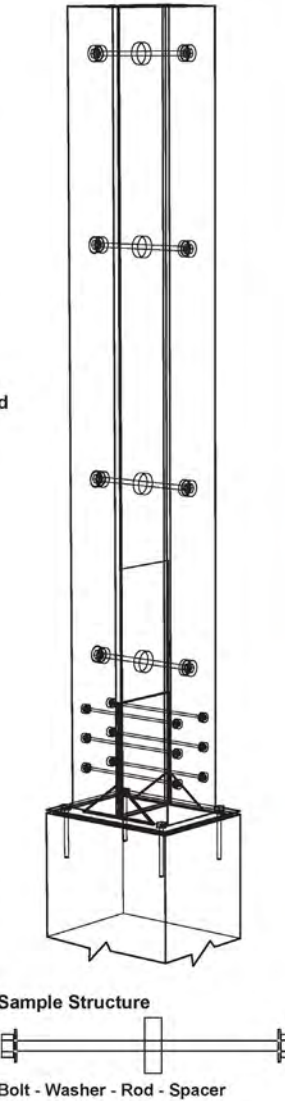
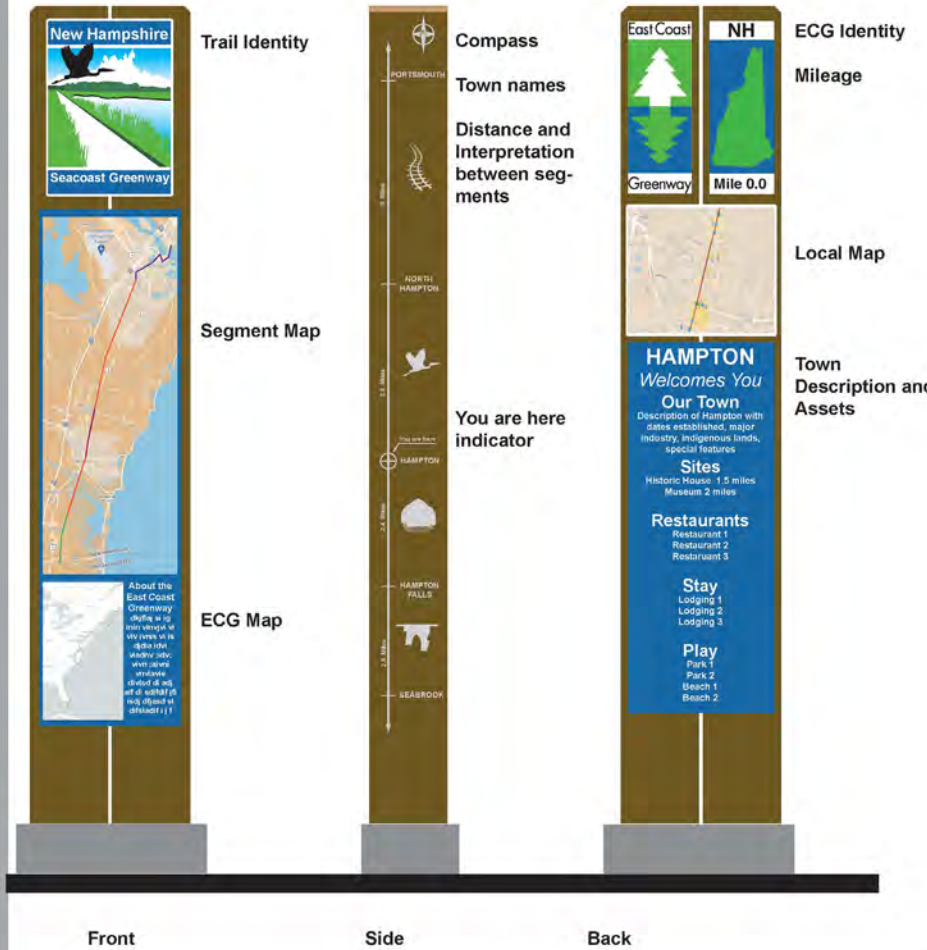




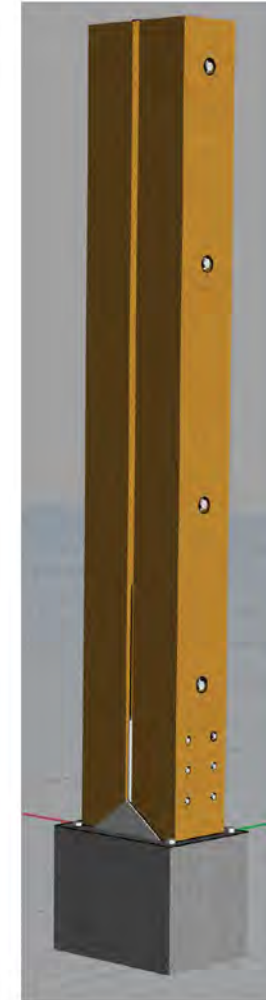
# NHSG Signage Family Concepts



New Hampshire  
Seacoast Greenway  
Sign Family DRAFTS  
Posts and Mile Markers  
Footing Structures



# NHSG Signage Family Concepts

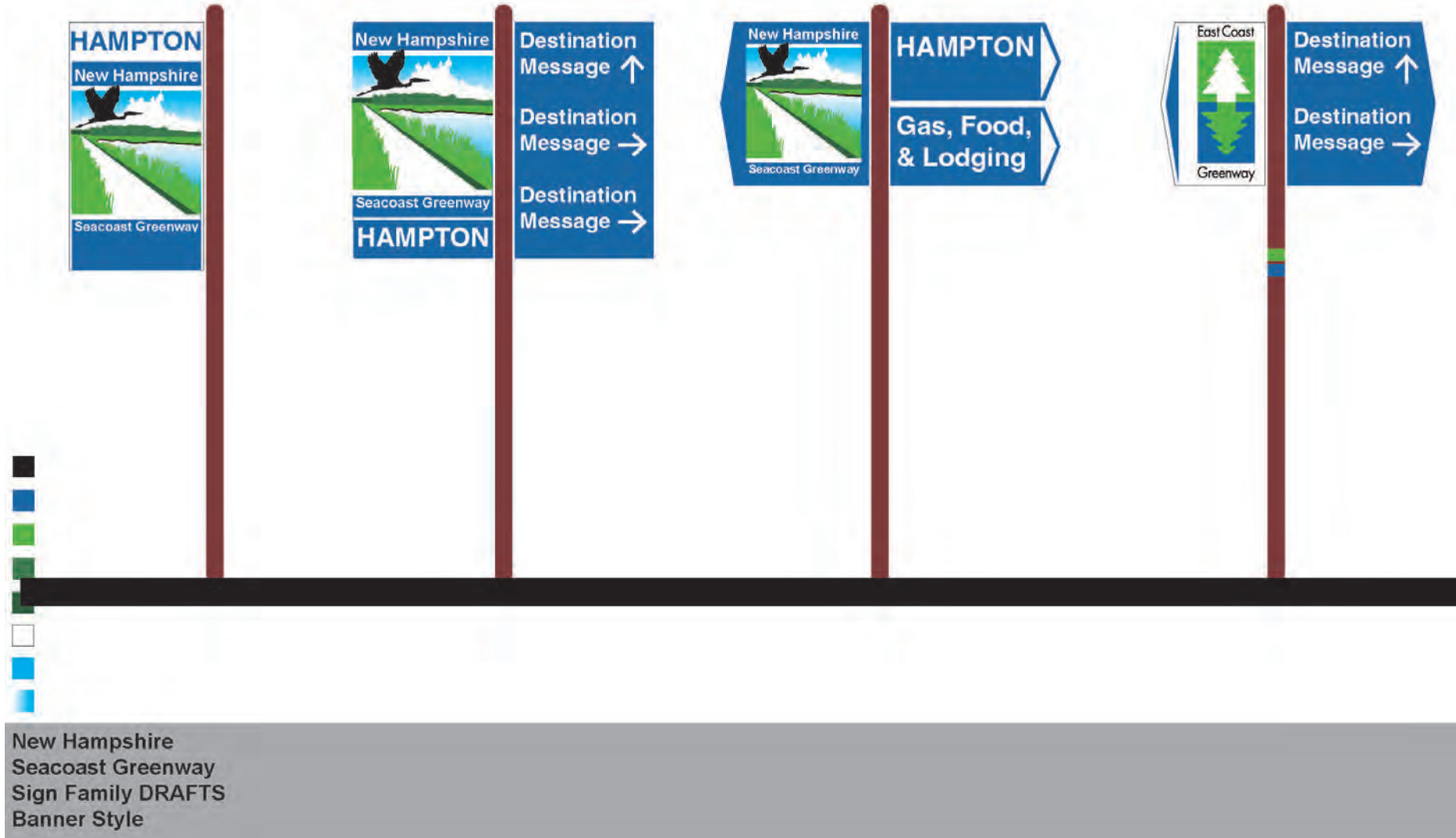




# NHSG Signage Family Concepts



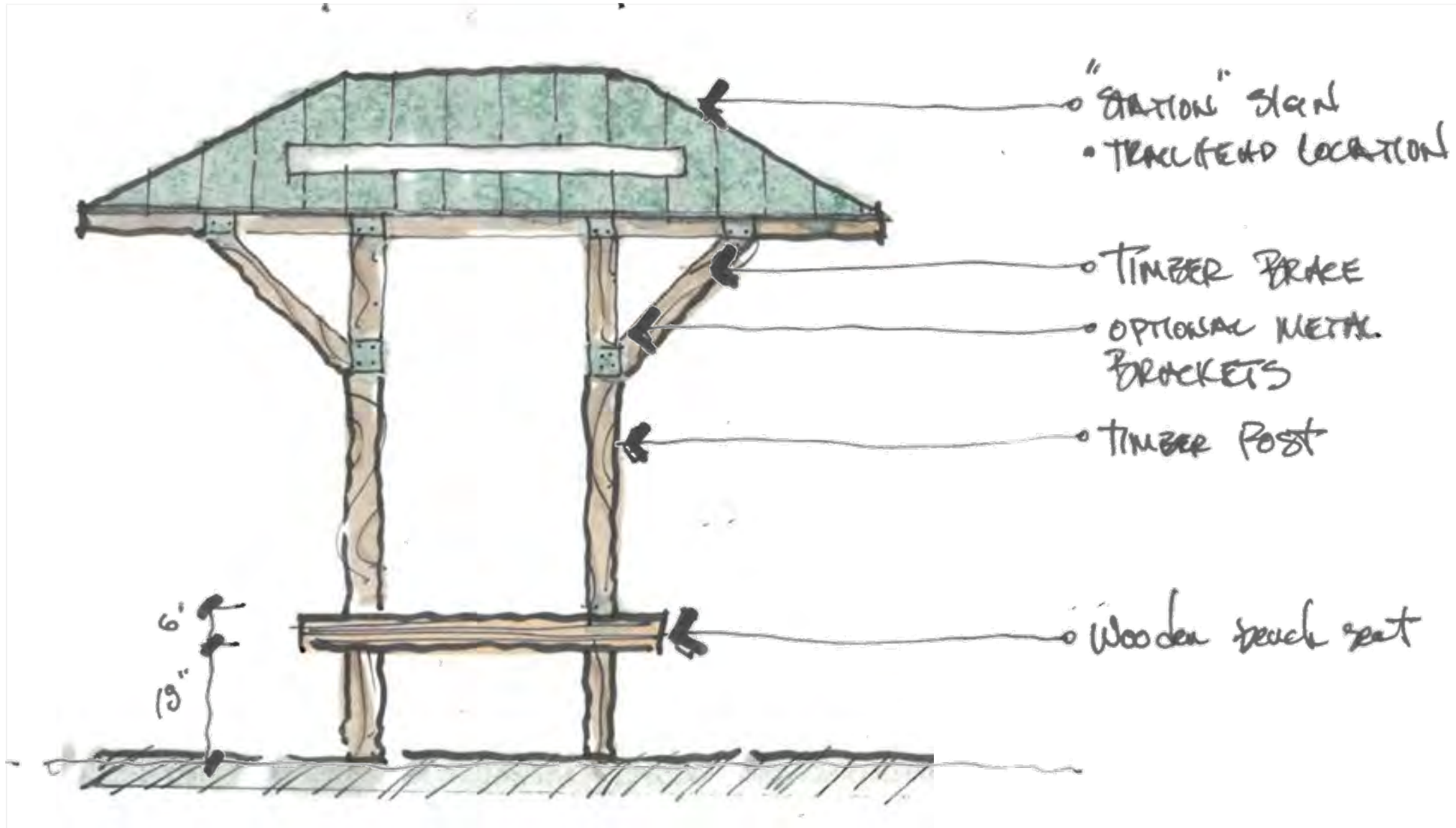
# NHSG Signage Family Concepts



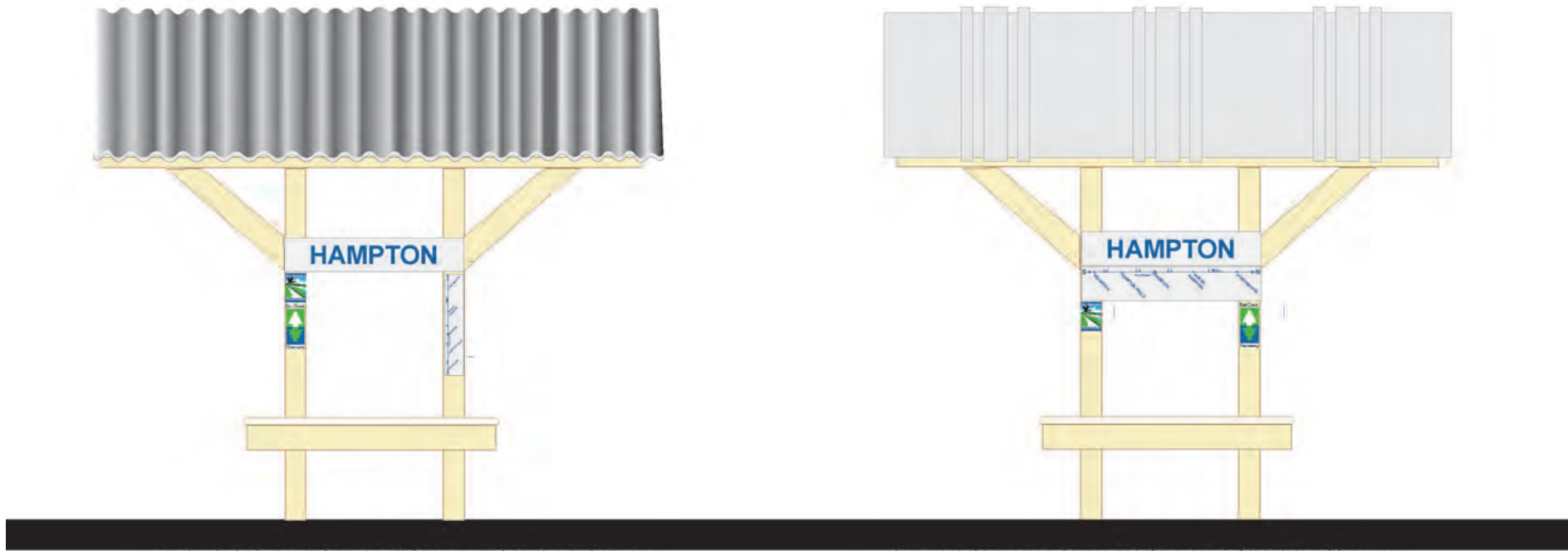


BREAKFAST HILL ROAD

# Trailside Shelter



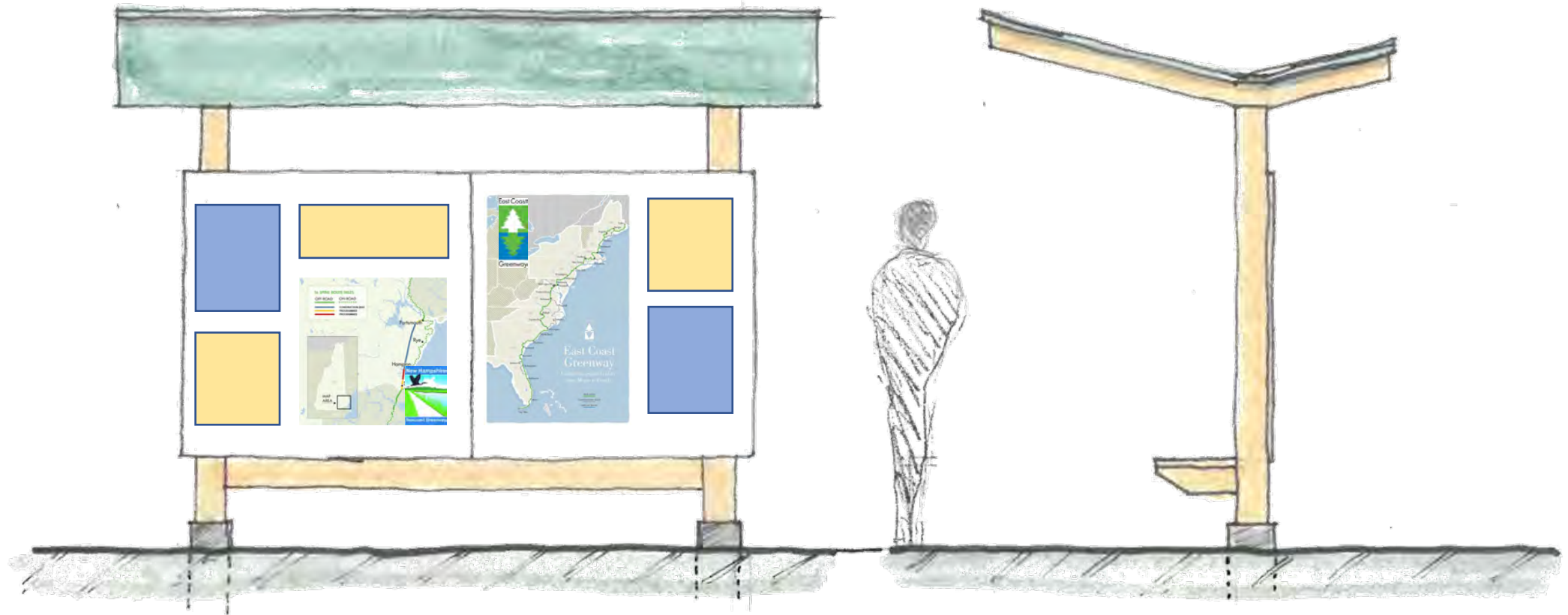
# NHSG Signage Family Concepts



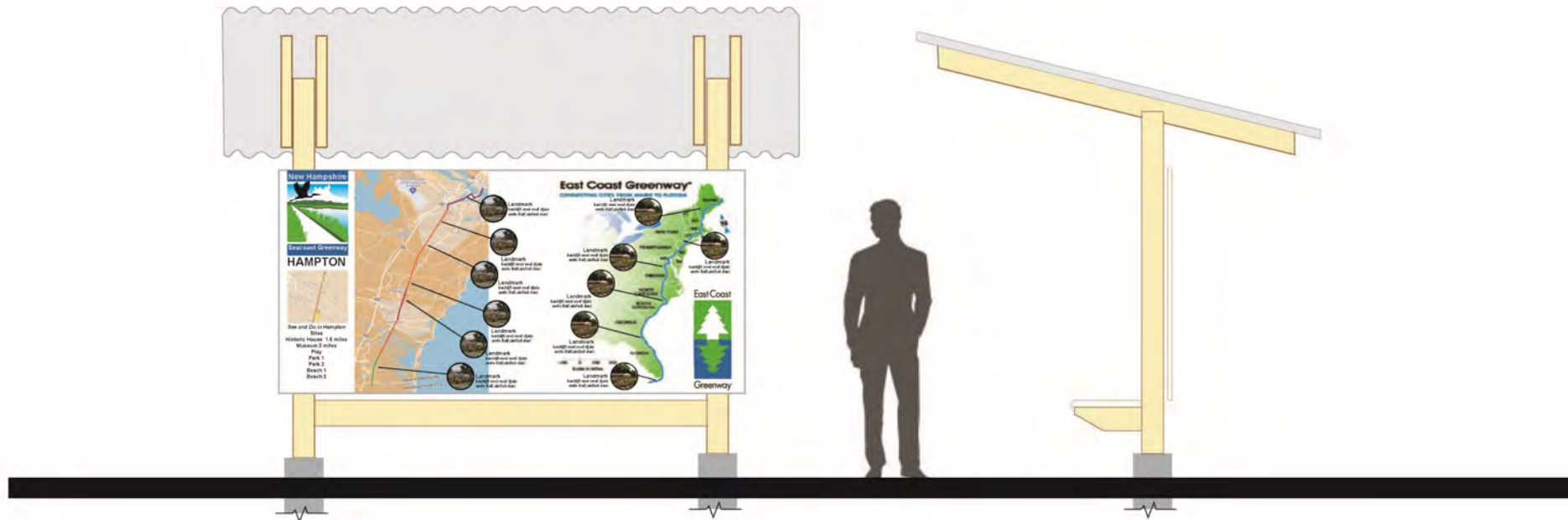
New Hampshire  
Seacoast Greenway  
Sign Family DRAFTS  
Trailside Shelter



# Trailhead Kiosk



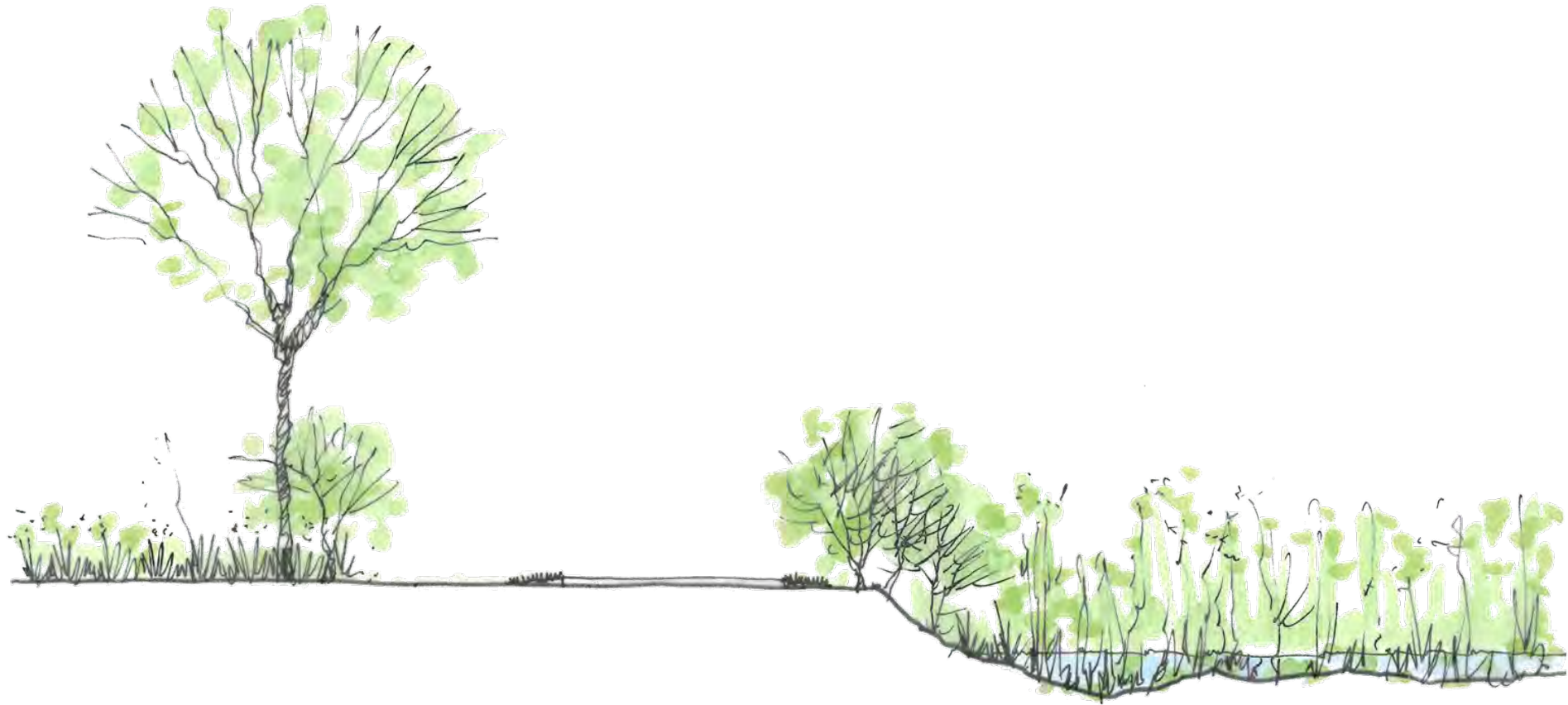
# NHSG Signage Family Concepts



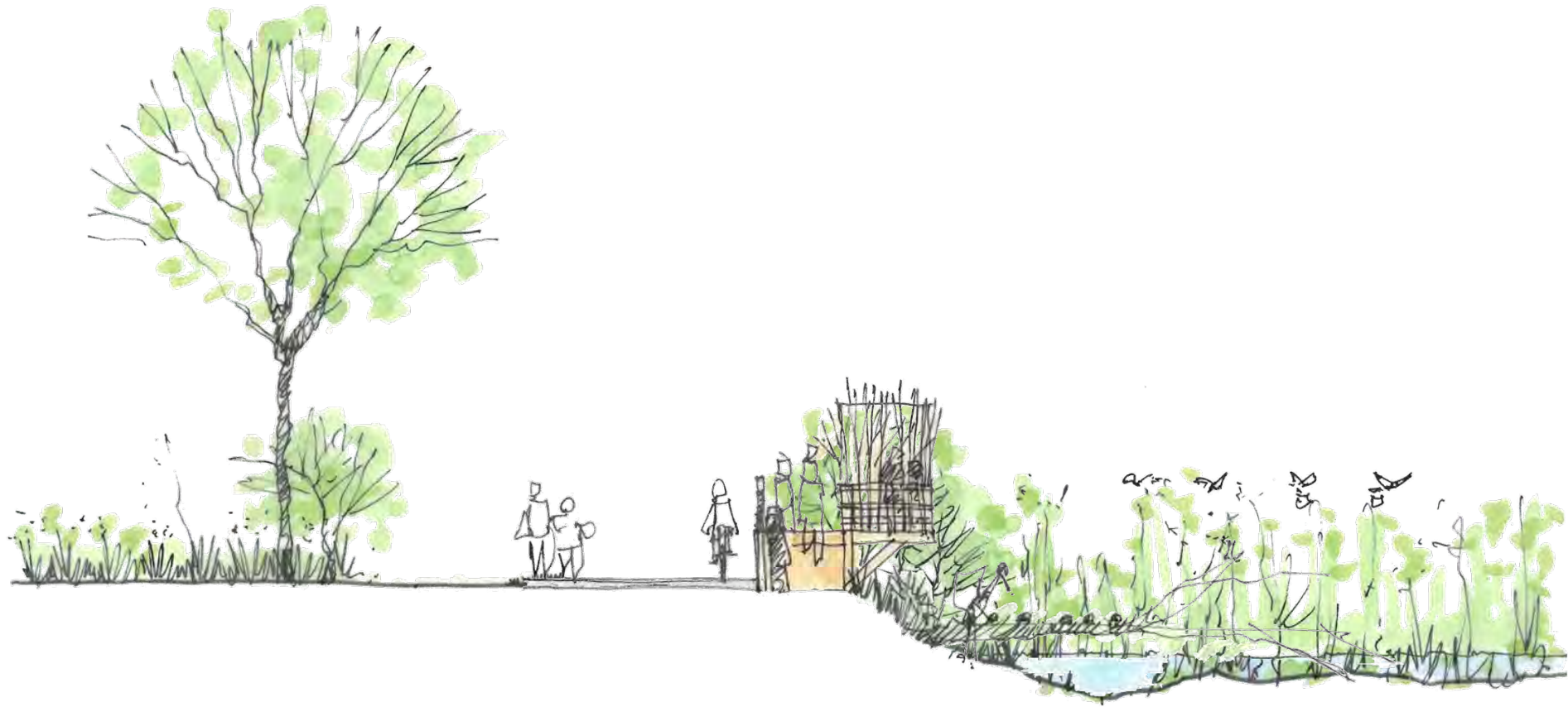
New Hampshire  
Seacoast Greenway  
Sign Family DRAFTS  
Trail Kiosk



# Marsh Overlook Concepts

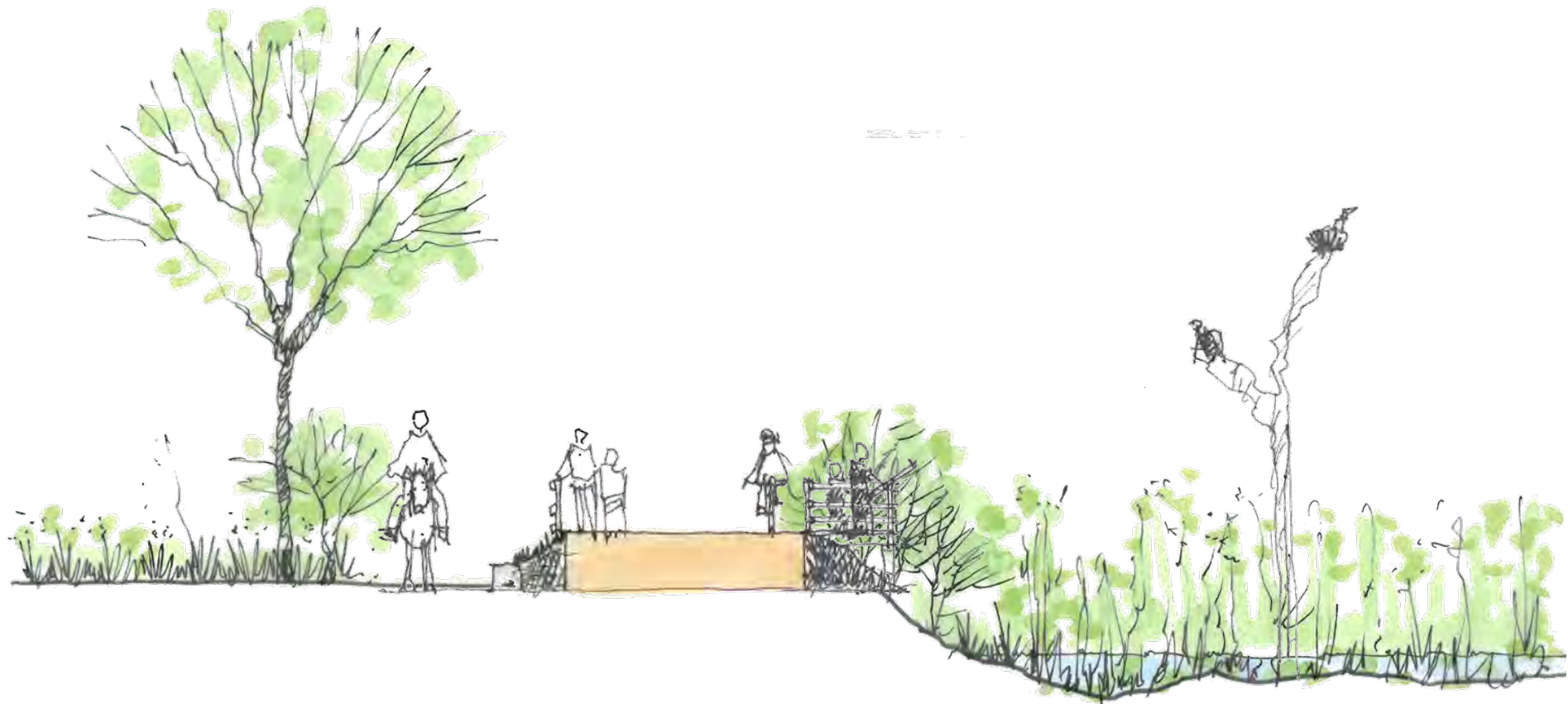


# Marsh Overlook Concepts

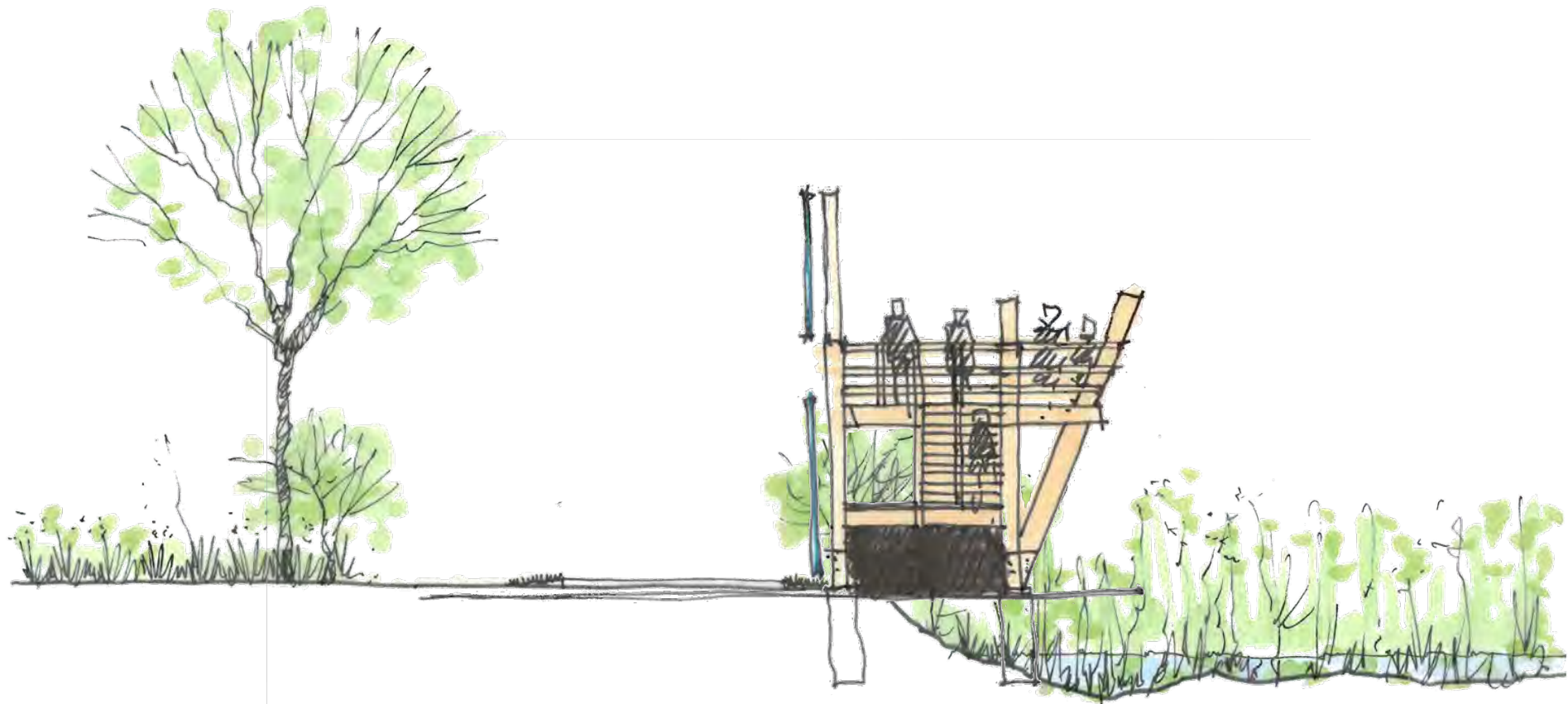




# Marsh Overlook Concepts

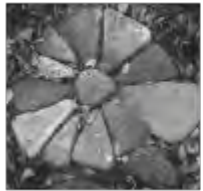


# Marsh Overlook Concepts





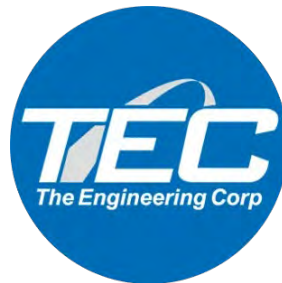
# GPI Placework



*terra firma*  
landscape architecture



D. R. HORNE & COMPANY



## Workshop Design Team

Thank you to our design team who lent  
their time and skills today:

- Bob White, GPI
- Ken Ferrer, PlaceWork
- Terrence Parker, terra firma
- Colleen Wolfe, D.R. Horne & Company
- Jeff Brubaker, Planner & Trail Advocate
- Tony Ciolfi, TEC
- Julie Isbill, National Park Service
- Cindi Hron, National Park Service
- Mallory Zink, National Park Service