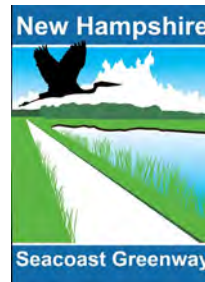


# New Hampshire Seacoast Greenway Community Connections Design Workshop



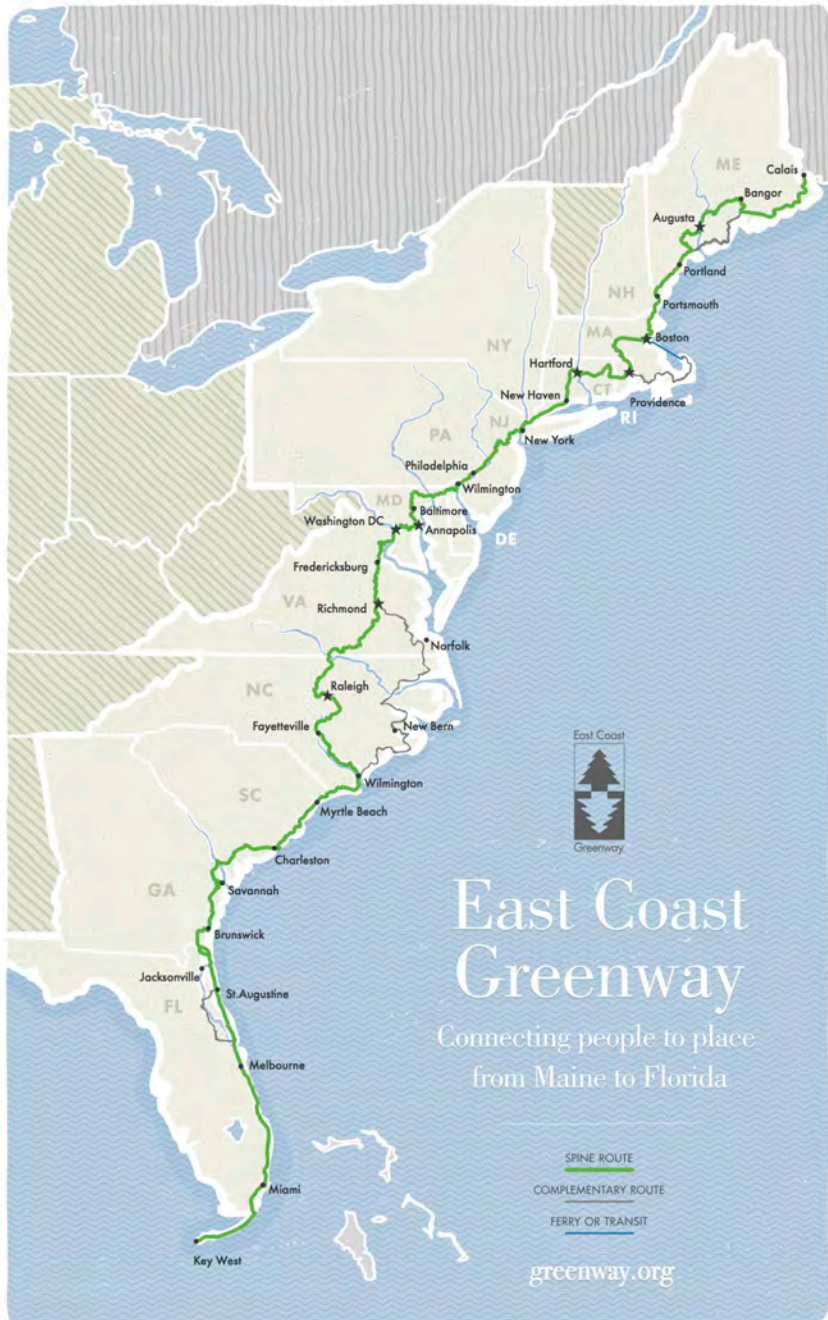
Portsmouth Public Library  
September 23, 2022





# East Coast Greenway

*The East Coast Greenway is envisioned as an urban Appalachian Trail, extending 3,000 miles from Calais, ME to Key West, FL, connecting major cities, small towns and natural areas along the East Coast.*



**Down East  
Sunrise Trail,  
Maine**



**Florida Keys  
Overseas  
Heritage Trail,  
Florida**







# The Greenway Through New England

*321 miles completed off-road*

*199 miles in pipeline*

*58 miles alignment identified*

*169 miles current gap (on-road for now)*

*Connects New York City, New Haven, Hartford, Providence, Worcester, Boston, Newburyport, Portsmouth, Portland*







# NH Seacoast Greenway Summary of Project Phases



## Phase IA – North Hampton - Ports (8 mi)

*Design and permitting in progress*

*Construction 2023-2024*



## Phase IB – Hampton (1.6 mi)

*Design and permitting in progress*

*Construction 2024*



## Phase II – Seabrook (2.4 mi)

*In TYP for 2030*



## Phase III – Hampton Falls Marsh (2.3 mi)

*In TYP for 2032*



# National Park Service Technical Assistance Grant

*NPS Rivers, Trails & Conservation Assistance Program*

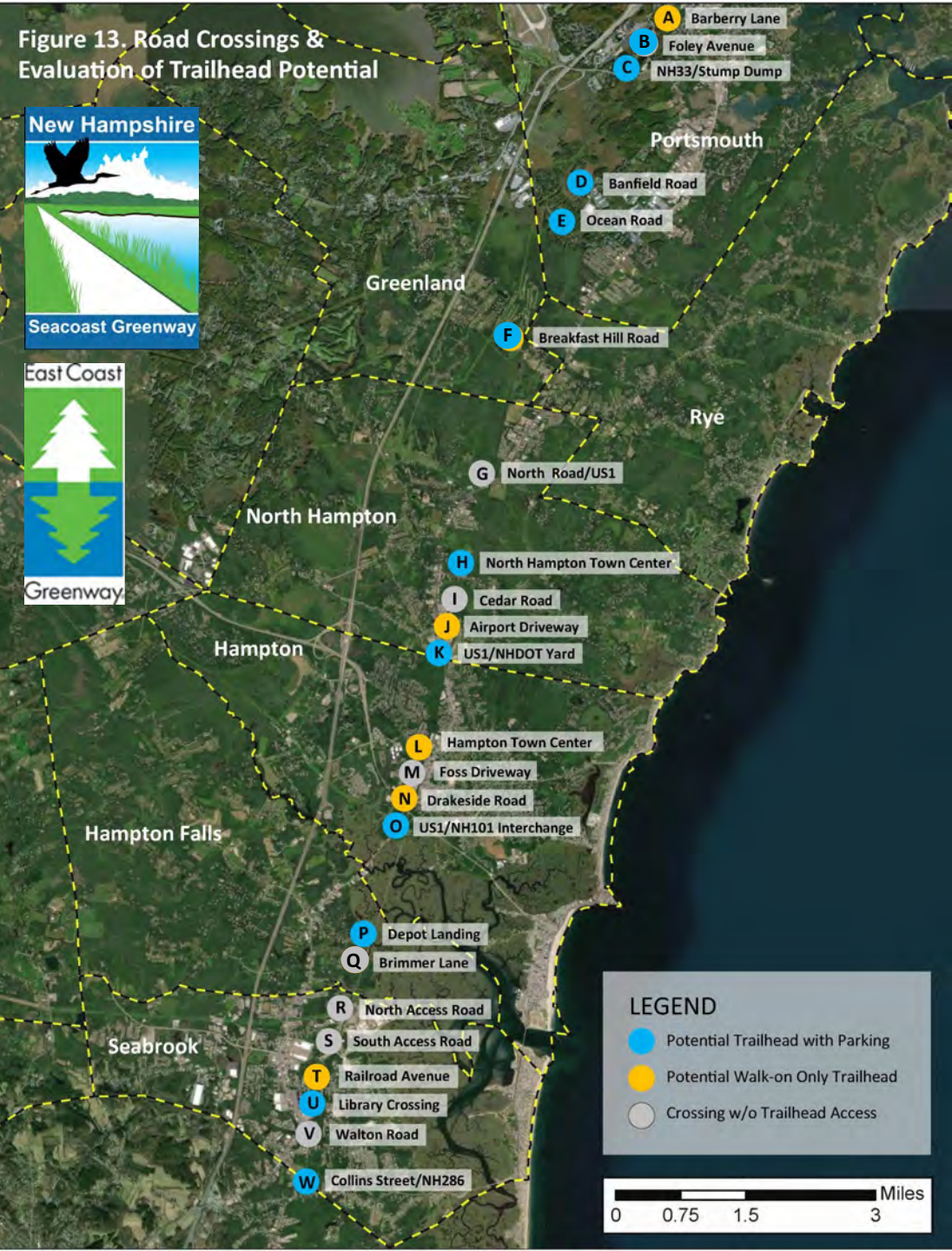
## Project Workgroups

- **Community connections & Trailheads**
- **Trail Signage Planning**
- **NHSGA Organizational Development**





Figure 13. Road Crossings & Evaluation of Trailhead Potential



# NH Seacoast Greenway Trailhead Access Analysis

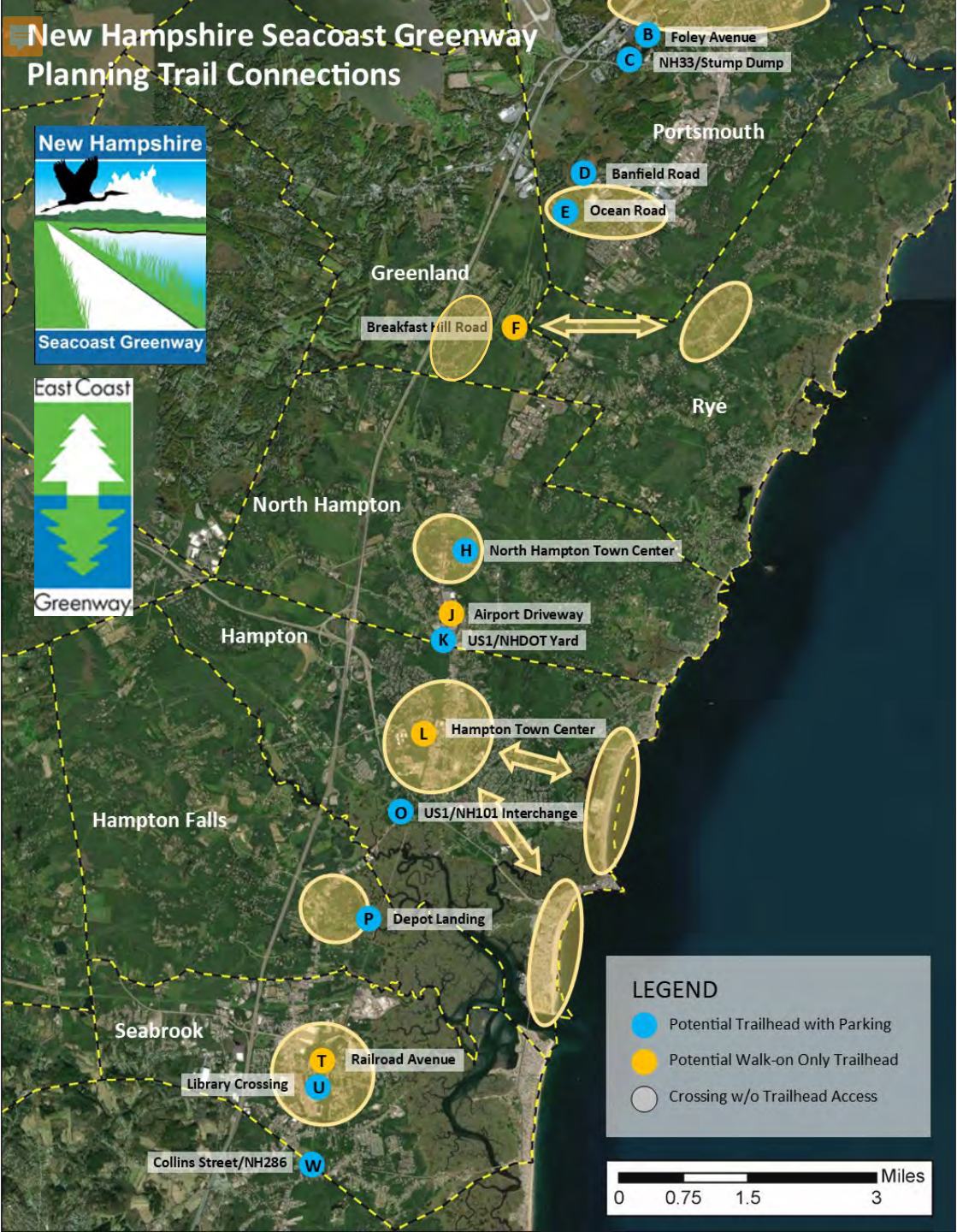
23 Road Crossings of Hampton Branch between Portsmouth and Seabrook

Potential trailhead with parking (11) 

Potential walk-on only trailhead (5) 

Crossing without trailhead potential (7) 





# NHSG Community Connections Workgroup

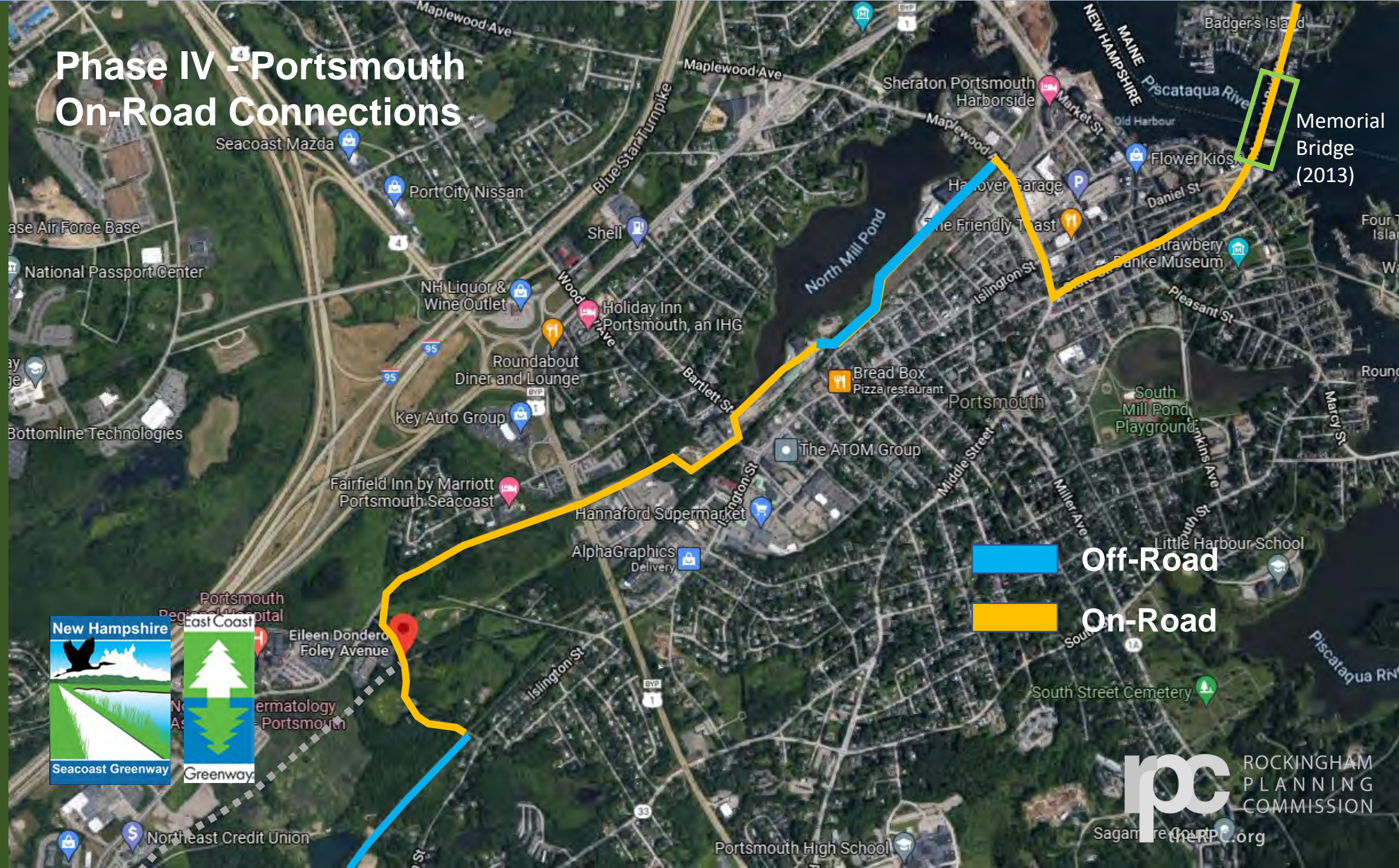


## Goals for Workgroup

- Planning assistance to towns on trail connections:
- *How can the trail be most accessible to residents?*
- *How can the trail best connect to serve as an economic catalyst locally?*
- Refining trailhead designs



# Phase IV - Portsmouth On-Road Connections

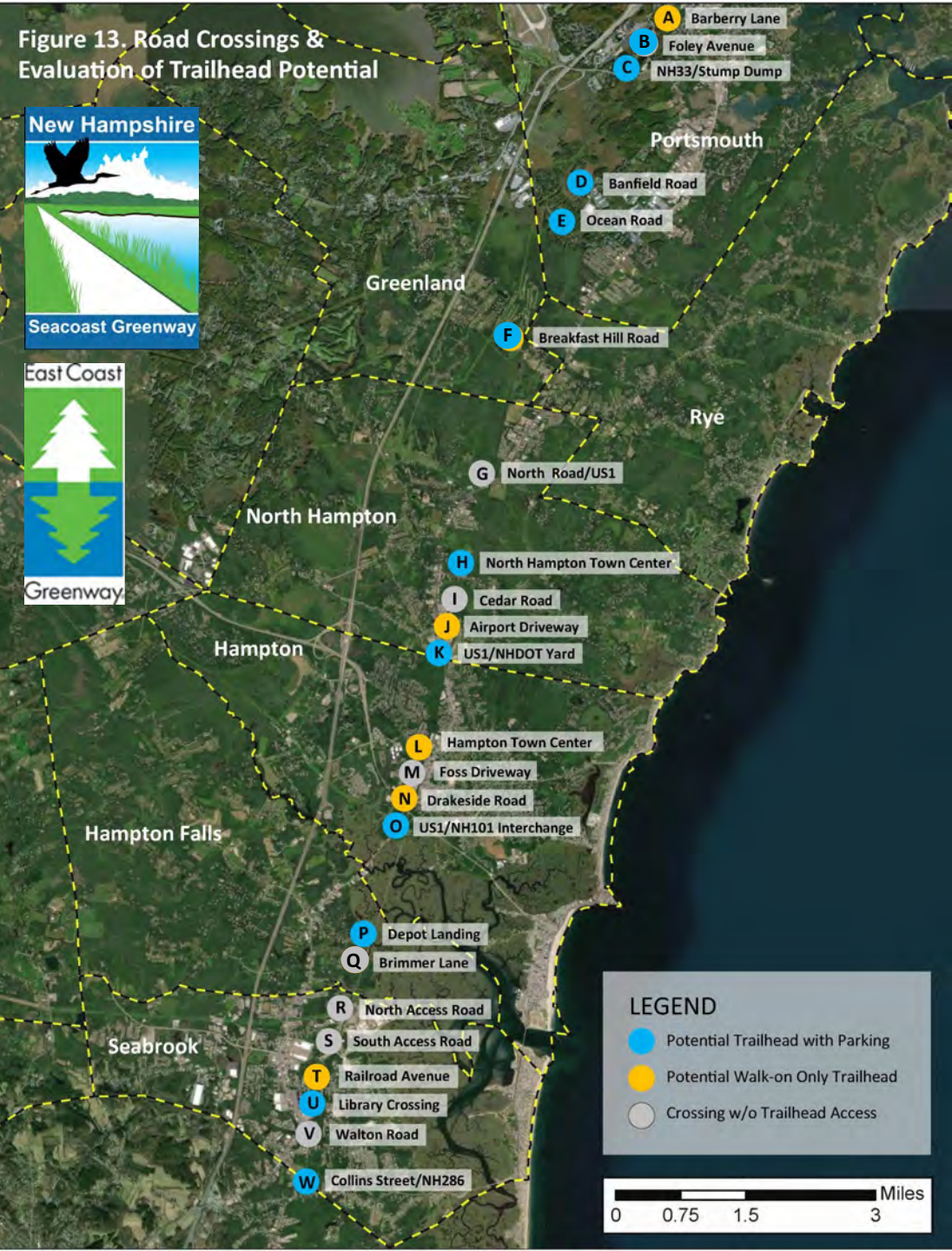


ROCKINGHAM  
PLANNING  
COMMISSION

[www.rpc.org](http://www.rpc.org)



Figure 13. Road Crossings & Evaluation of Trailhead Potential



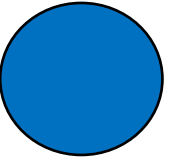
# NH Seacoast Greenway Community Connections Design Workshop #1

Focus on Four Trail Access Points

- Borthwick Avenue
- NH33/Stump Dump
- Banfield Road
- Breakfast Hill Road



# Crossings with Trailhead Parking Potential



Site: Eileen Dondero Foley Avenue

City: Portsmouth

Adjacent public land: No

Neighborhood Proximity: Limited

Business Proximity: Yes but not retail

In plans: City Ped/Bike Plan



# Trail Access Design Concepts Borthwick Ave & Eileen Dondero Foley Ave



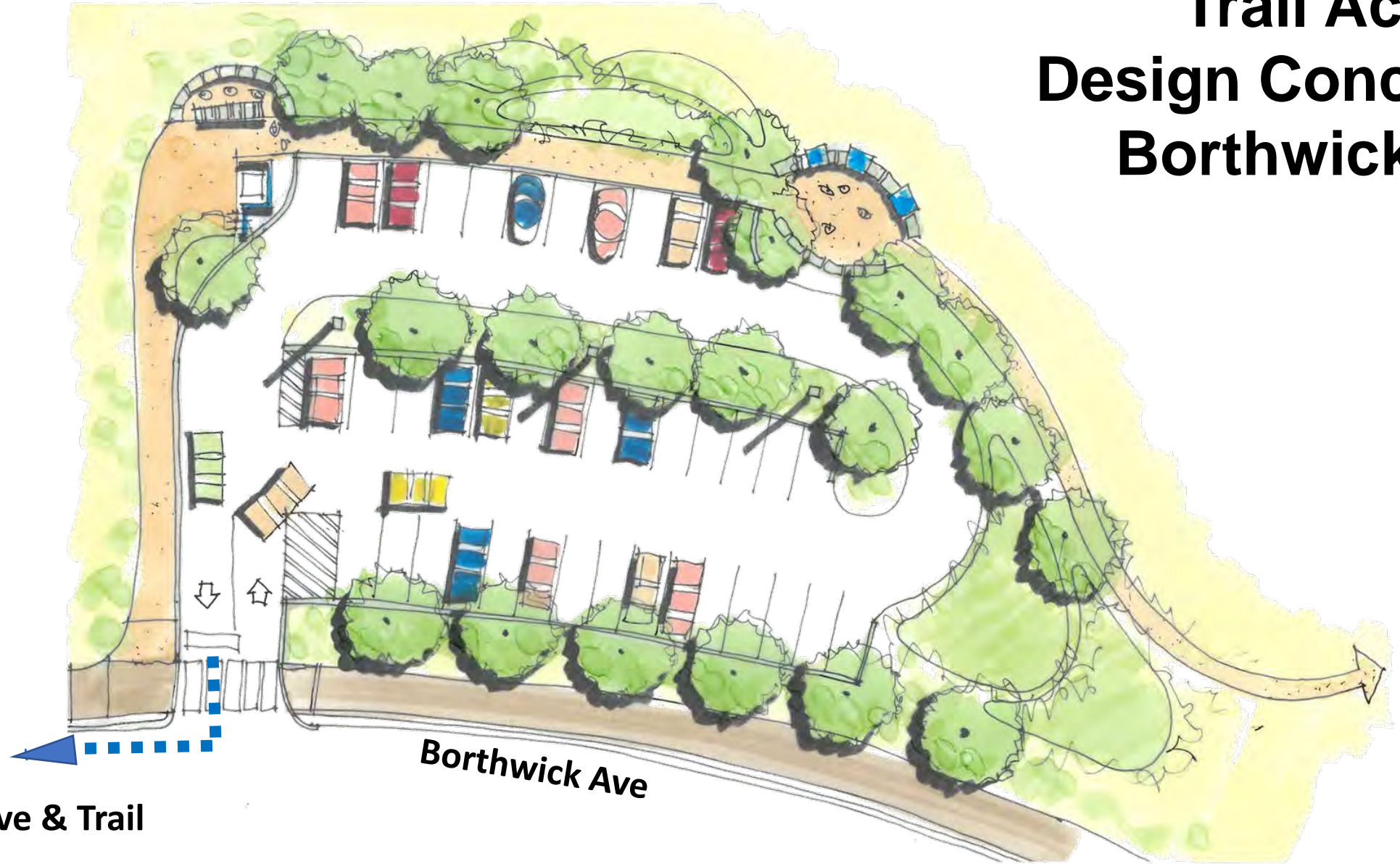


# Trail Access Design Concepts Borthwick Ave & Eileen Dondero Foley Ave





# Trail Access Design Concepts Borthwick Ave

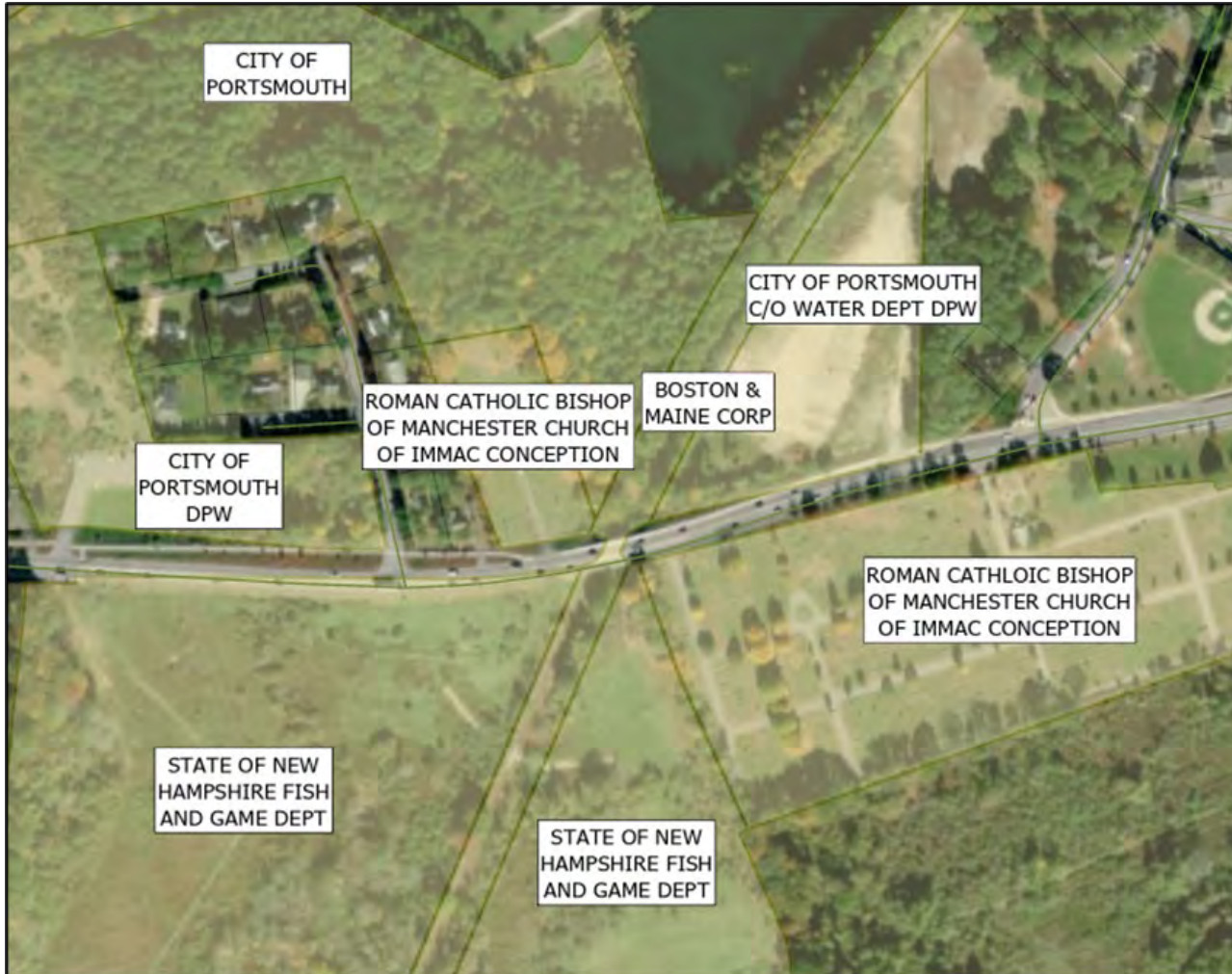
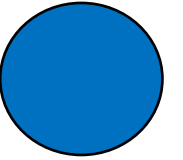


To Foley Ave & Trail

Borthwick Ave



# Crossings with Trailhead Parking Potential



Site: NH33/Stump Dump

City: Portsmouth

Adjacent public land: Yes

Neighborhood Proximity: Limited

Business Proximity: No

In plans: City Ped/Bike Plan



# Trail Access Design Concepts NH33/Stump Dump

Site: NH33/Stump Dump

City: Portsmouth

Adjacent public land: Yes

Neighborhood Proximity: Limited

Business Proximity: No

In plans: City Ped/Bike Plan





**LEGEND**

- LIMIT OF WORK
- - - PROPERTY LINE
- GUTTER
- EDGE OF WEDGE
- CURVED CURVE
- EXISTING DRAIN
- WOOD GUARDRAIL
- CATCH BASIN
- UTILITY POLE
- DRAINAGE MANHOLE
- CENTRAL ANGLE
- BENT
- ADJUSTERS MAP & PARCEL NUMBER
- RETAIN
- GRADE
- LOW AND SLOPE

**PLANT SCHEDULE**

CODE	QTY	BOTANICAL NAME	COMMON NAME	SIZE	CONTAINER	NOTES
AS	9	ACER SACCHARINUM	SUGAR MAPLE	2"-2 1/2" CAL.	BAG	
BN	3	BETULA NIGRA	RIVER BIRCH	12-14' HEIGHT	BAG	MULTI-TRUNK
QR	2	QUERCUS RUBRA	RED OAK	2"-2 1/2" CAL.	BAG	

**SKATE PARK AND PUMP TRACK SEE PLANS**

**GREENLAND ROAD**

**BOSTON AND MAINE RAILROAD**

**Scale: 1" = 20'**

**North Arrow**

**Materials Plan**

**Project: CITY OF PORTSMOUTH, NH**

**Site: 333 GREENLAND RD. PORTSMOUTH, NH 03801**

**Weston & Sampson**

**427 Main Street, Suite 402, Portsmouth, NH 03801**

**978.877.0110 800.8AMPSON**

**www.westonsampson.com**

**Consultants:**

**TFM MSC**

**170 Commerce Way, Suite 102, Portsmouth, NH 03801**

**Phone: (603) 431-2332 Fax: (603) 431-0810**

**www.tfmmsc.com**

**Revisions:**

No.	Date	Description

**Scale: AS SHOWN**

**Date: 08-11-2022**

**Drawn By: YL, GJ**

**Reviewed By: BK**

**Approved By:**

**W&S Project No.: 210044**

**W&S File No.:**

**Drawing Title:**

**MATERIALS PLAN**

**Sheet Number:**

**L120**

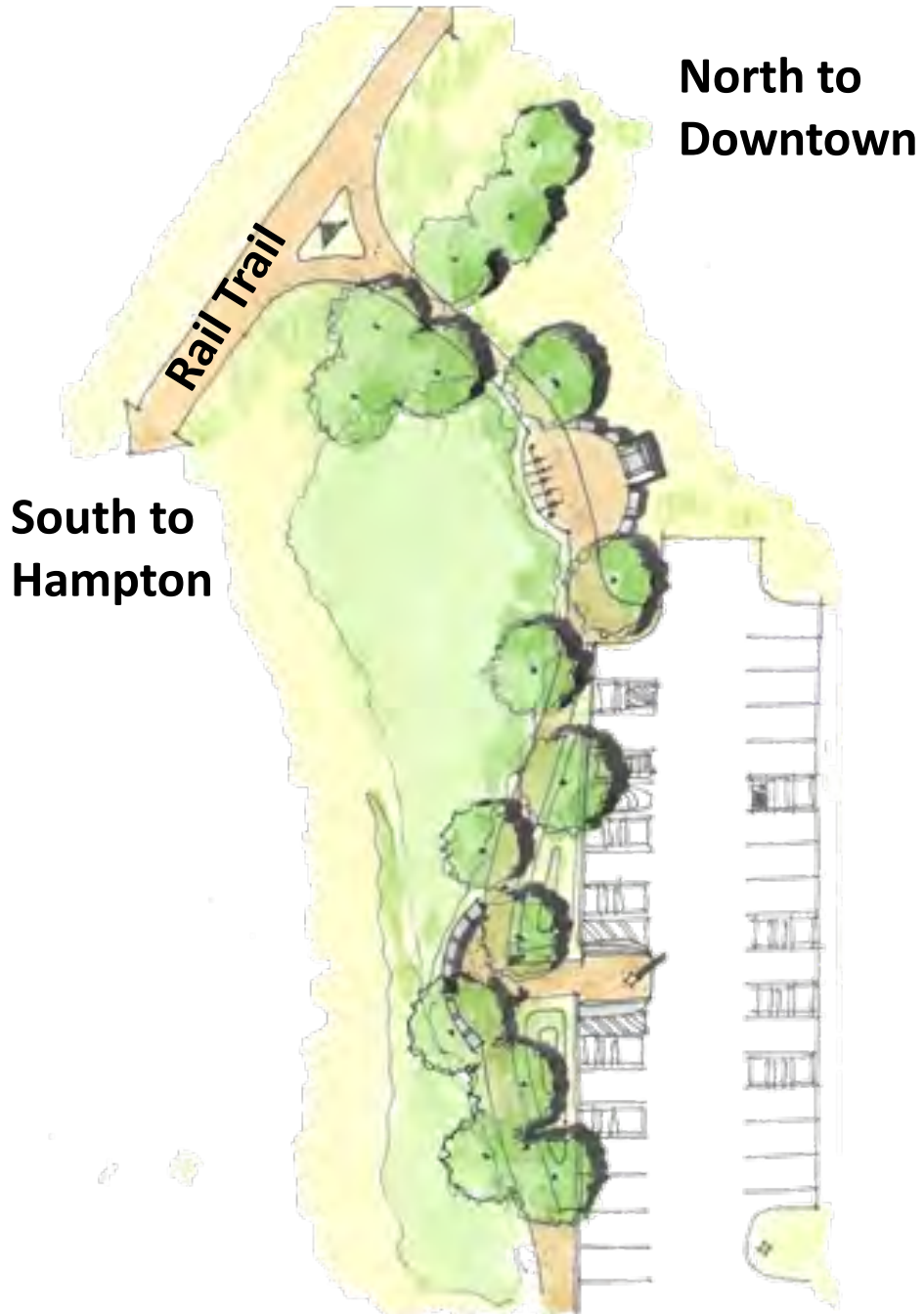


# Trail Access Design Concepts NH33/Stump Dump



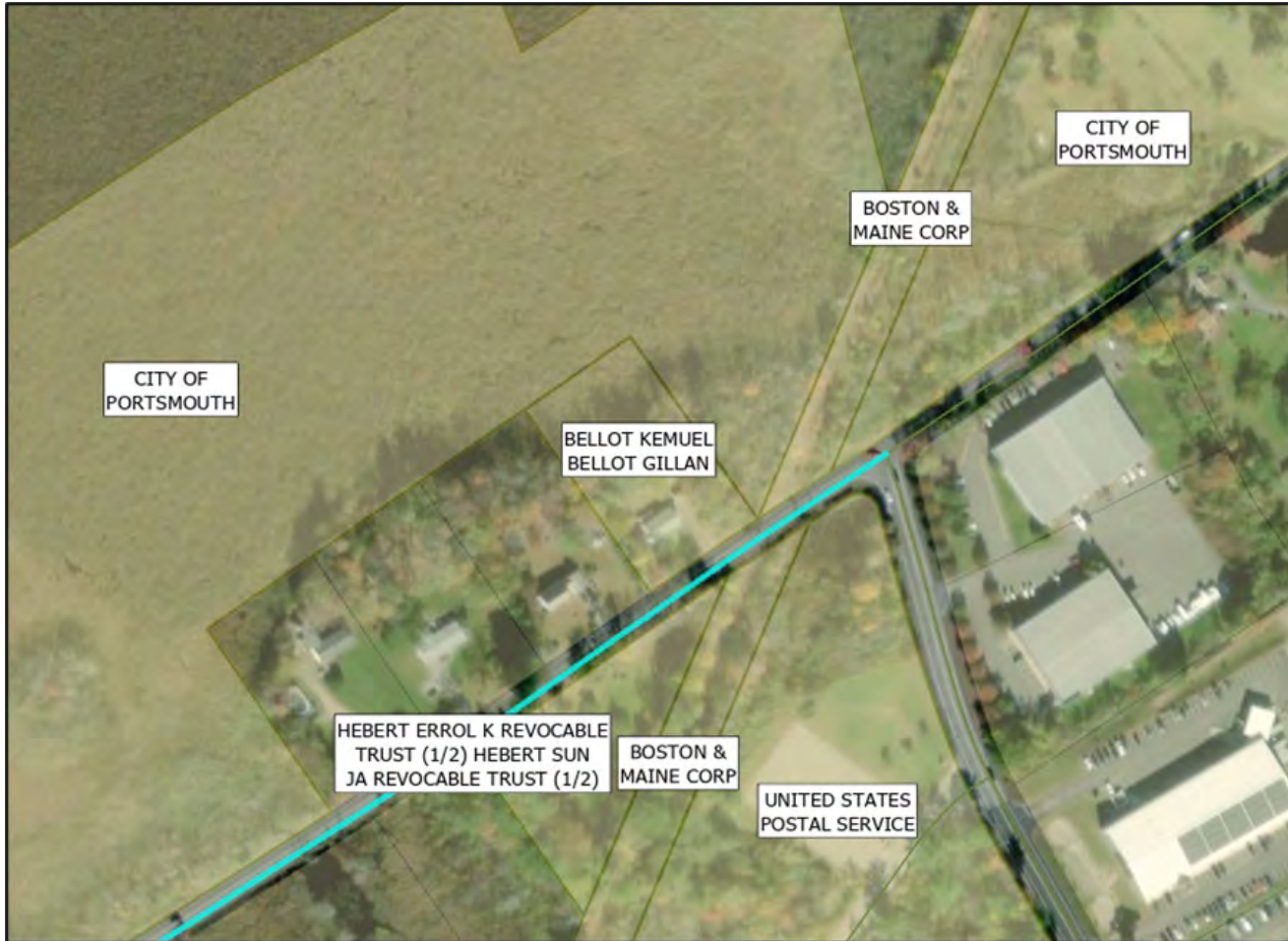


# Trail Access Design Concepts NH33/Stump Dump





# Crossings with Trailhead Parking Potential



Site: Banfield Road

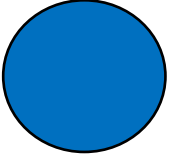
City: Portsmouth

Adjacent public land: Yes

Neighborhood Proximity: Limited

Business Proximity: Industrial

In plans: City Ped/Bike Plan





North to  
Portsmouth

# Trail Access Design Concepts Banfield Road

Rail Trail

South to  
Hampton

Banfield Road

BANFIELD RD





North to  
Portsmouth

South to  
Hampton

Rail Trail

Trail Access  
Design Concepts  
Banfield Road





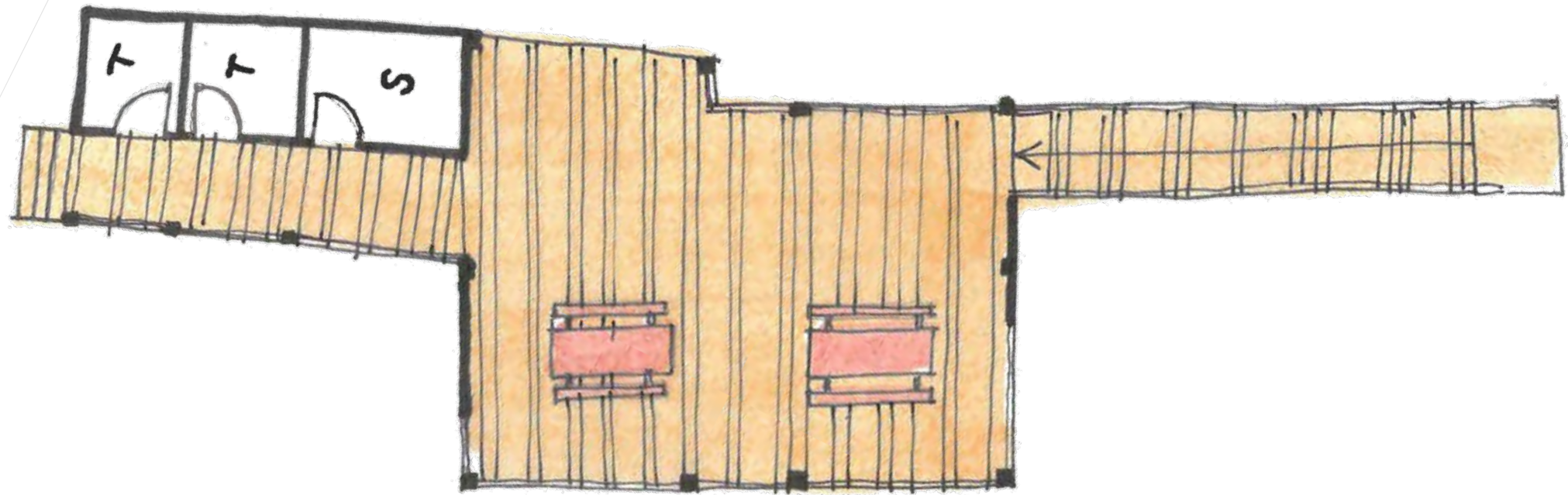
North to  
Portsmouth

# Trail Access Design Concepts Banfield Road





# Site Elements Banfield Road Pavilion and Restrooms





# Crossings with Trailhead Parking Potential



Site: Breakfast Hill Road

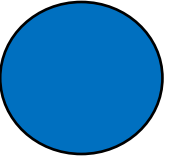
City: Greenland

Adjacent public land: No

Neighborhood Proximity: Yes

Business Proximity: Limited

In plans: No

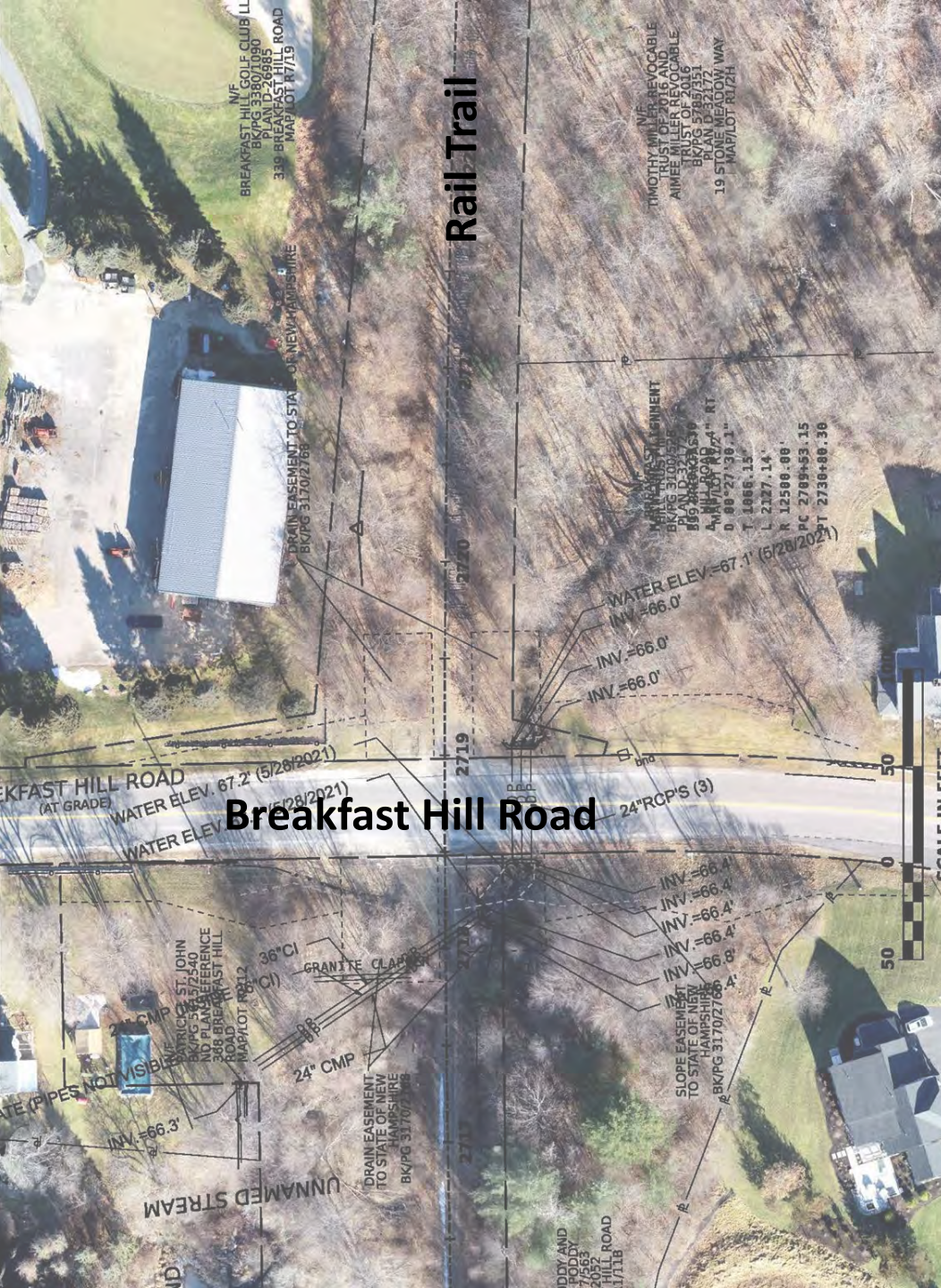




# Trail Access Design Concepts Breakfast Hill Road





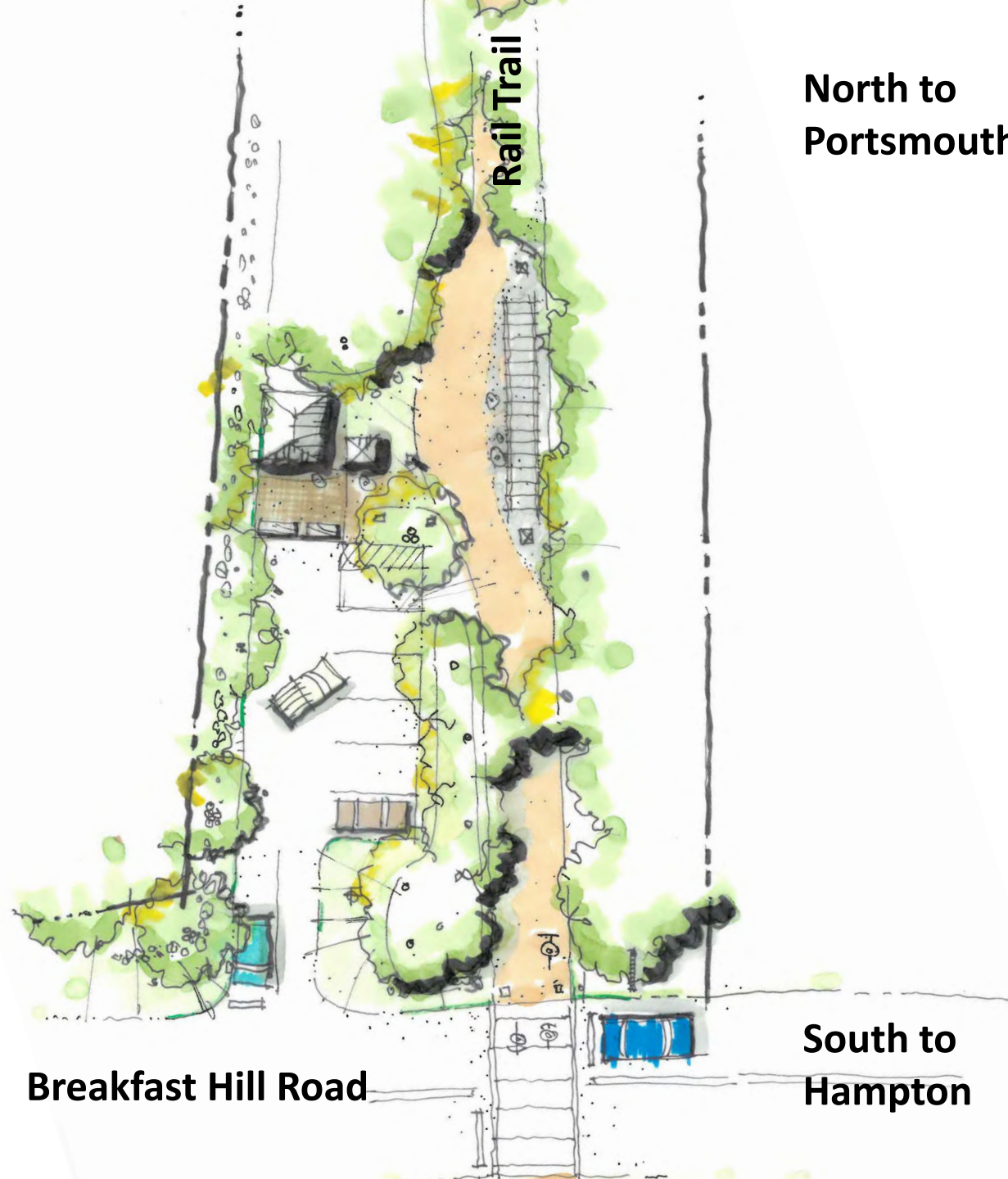


North to  
Portsmouth

# Trail Access Design Concepts Breakfast Hill Road

South to  
Hampton





North to  
Portsmouth

# Trail Access Design Concepts Breakfast Hill Road North Side Option

Breakfast Hill Road

South to  
Hampton



# Breakfast Hill Road North Side Detail



South to  
Hampton

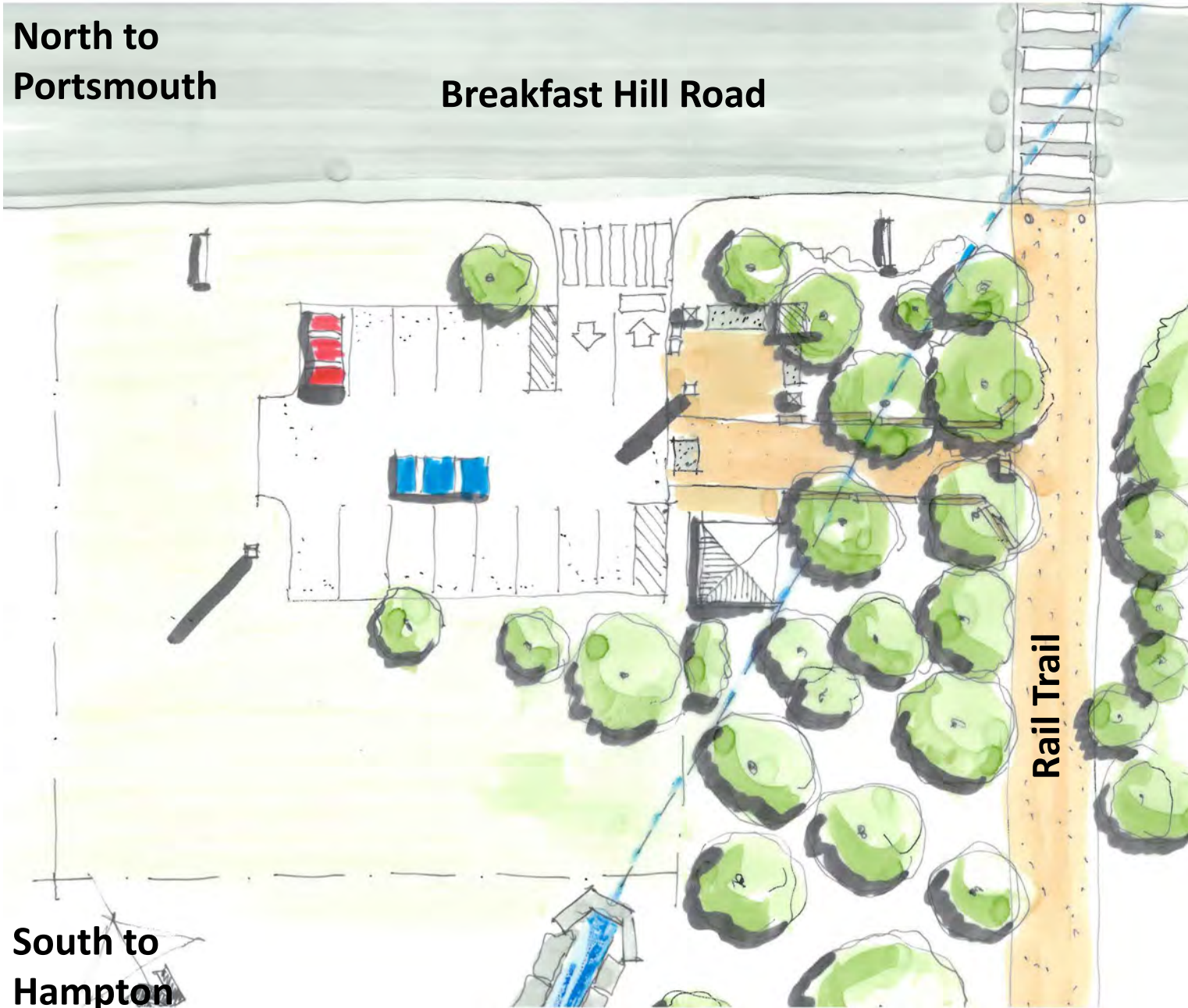
North to  
Portsmouth



**North to  
Portsmouth**

**Breakfast Hill Road**

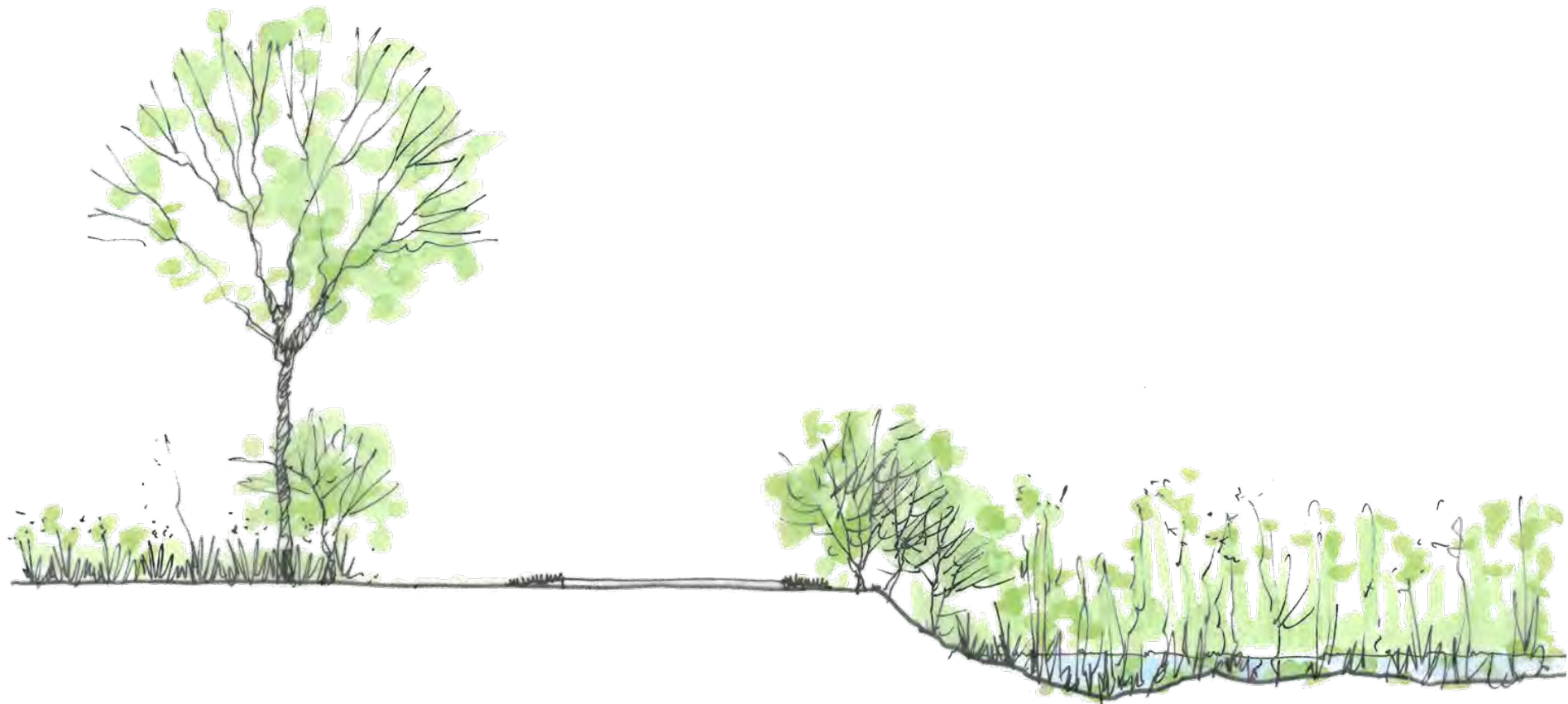
**South to  
Hampton**



# **Trail Access Design Concepts Breakfast Hill Road South Side Option**



# Marsh Overlook Concepts



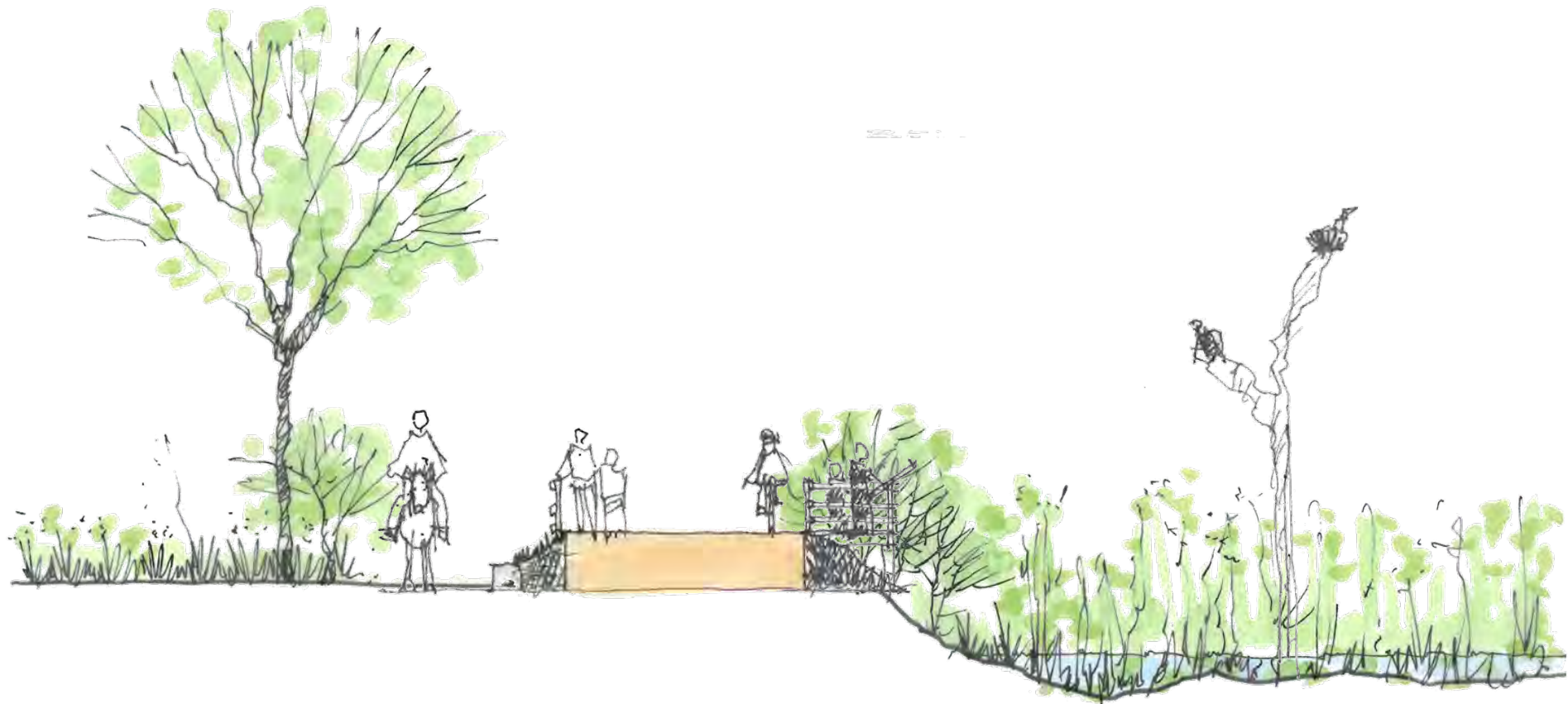


# Marsh Overlook Concepts



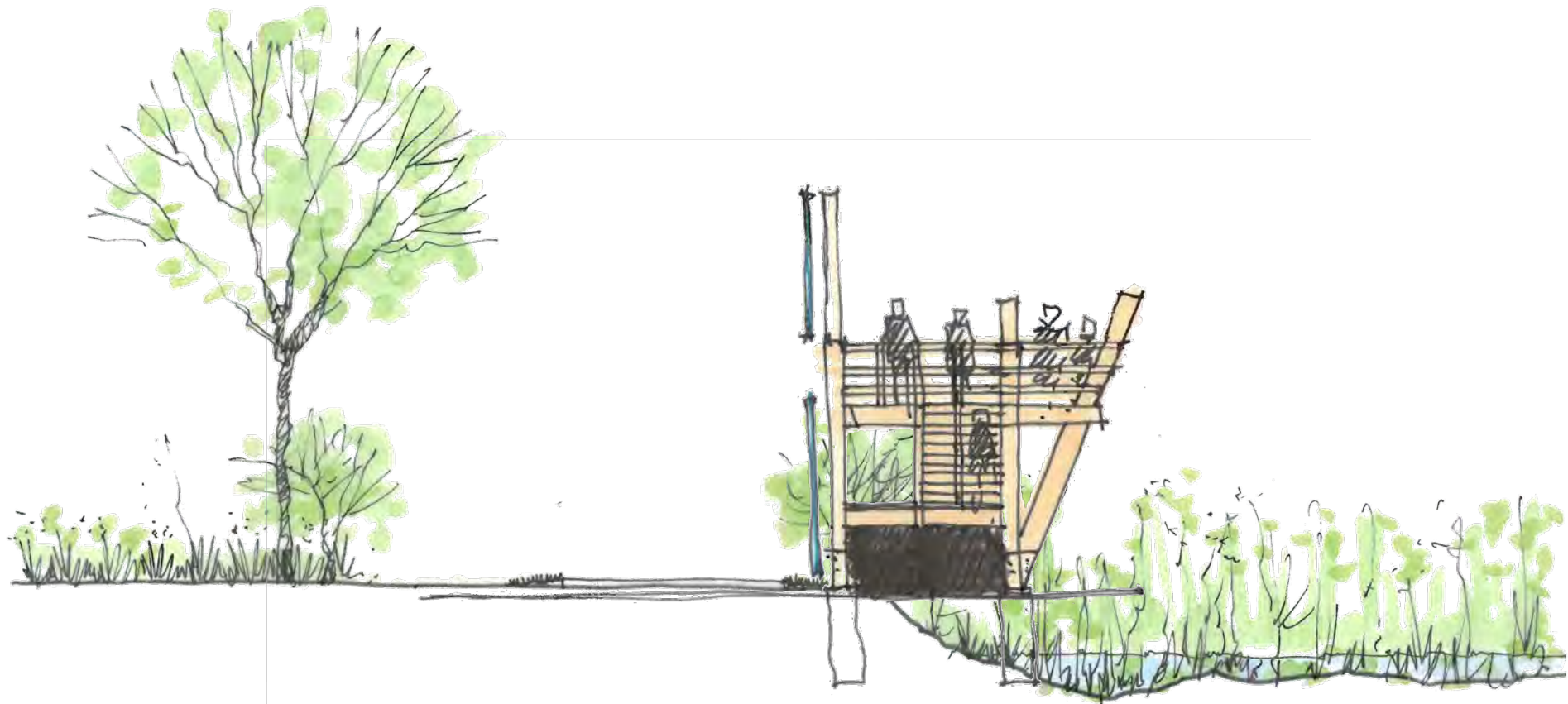


# Marsh Overlook Concepts



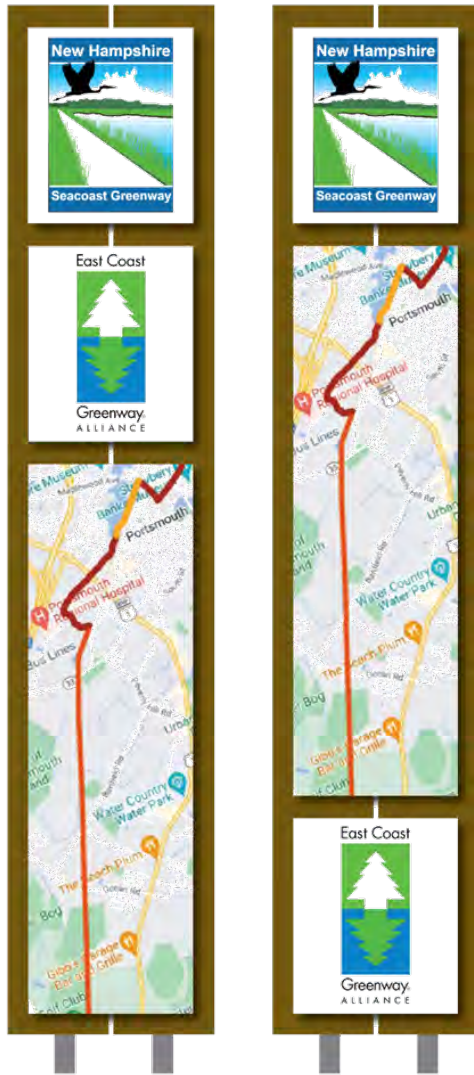


# Marsh Overlook Concepts





# Trail Signage Concepts



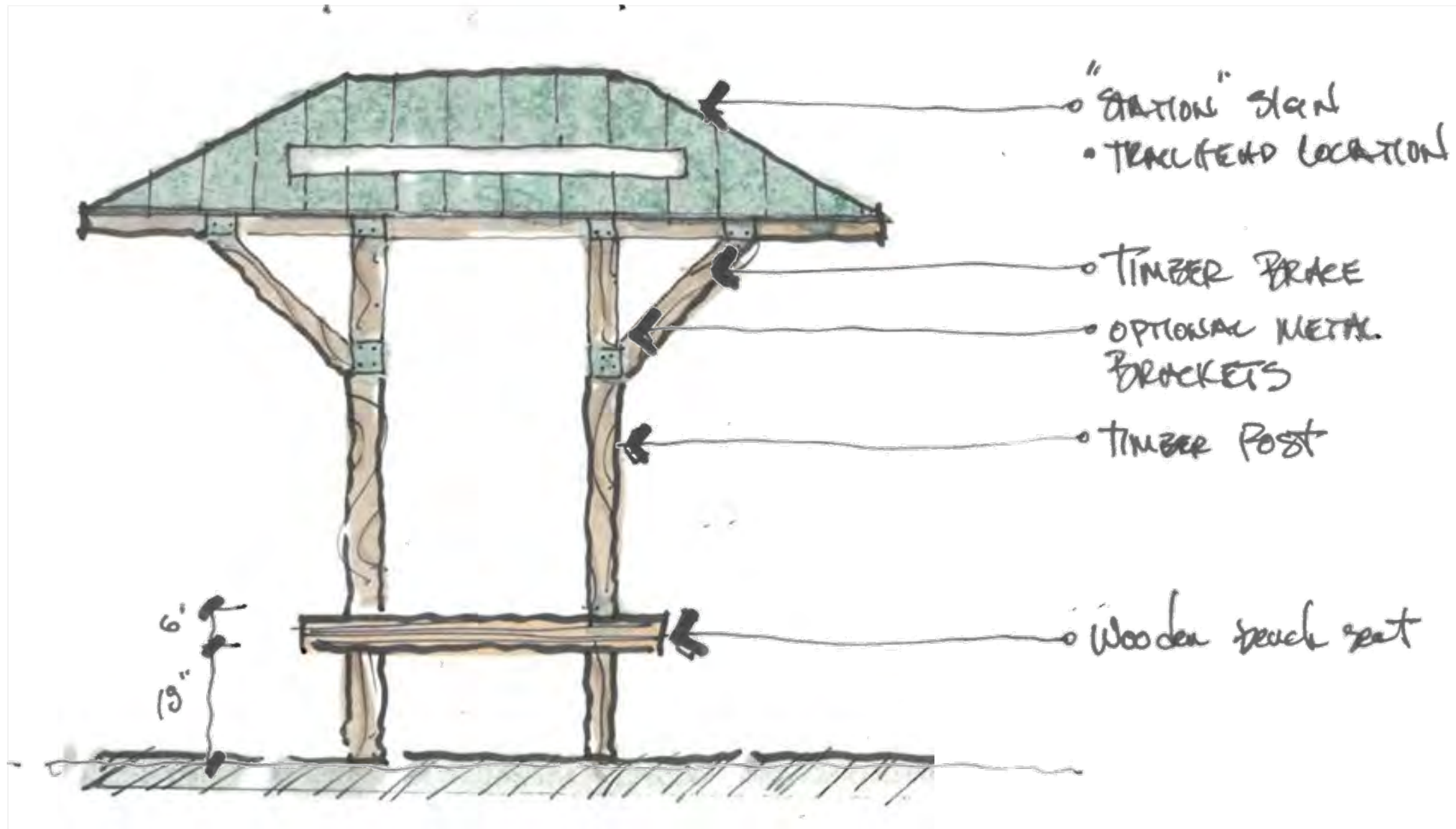


# Trail Signage Concepts



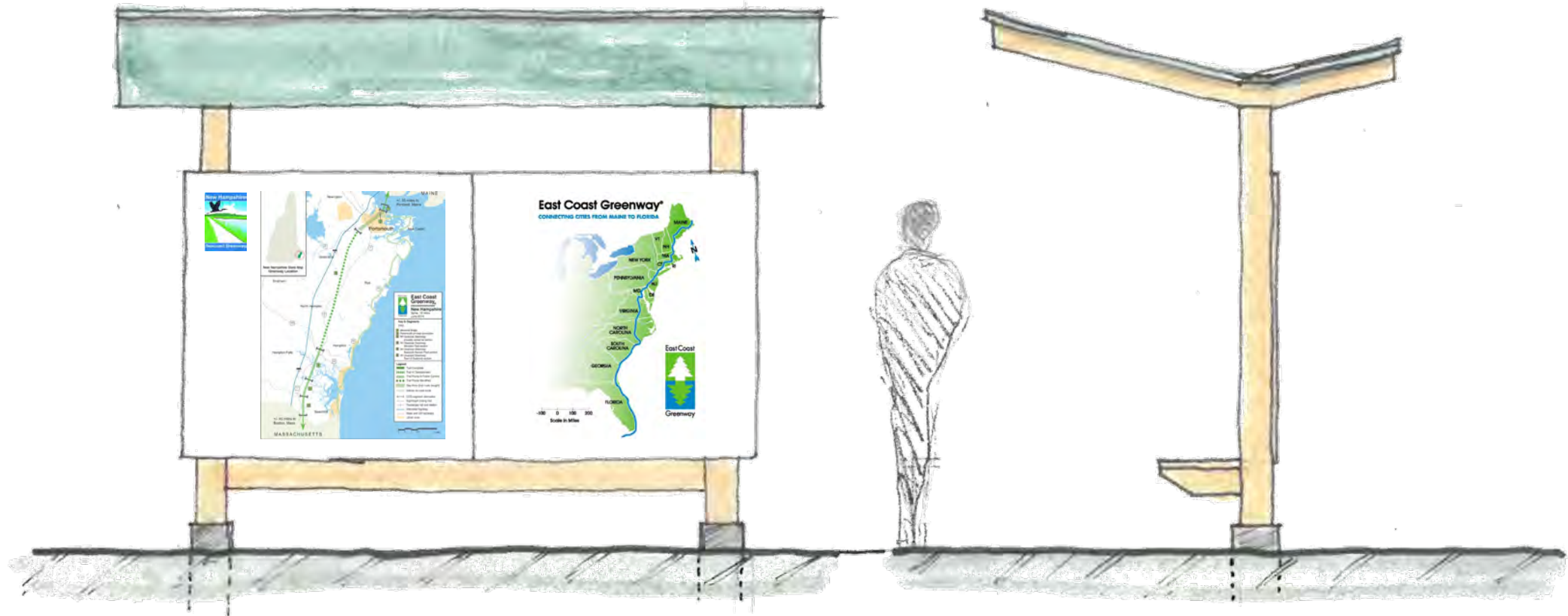


# Trailside Shelter





# Trailhead Kiosk





# Workshop Design Team

Thank you to our design team who lent  
their time and skills today:



- Bob White, GPI
- Ken Ferrer, PlaceWork
- Will Gatchell, Harriman
- Howard Snyder, Harriman
- Paul Jackson
- Nancy Kanner, Kanner Graphic Design



# New Hampshire Seacoast Greenway Community Connections Design Workshop



Portsmouth Public Library  
September 23, 2022





# New Hampshire



# Seacoast Greenway