

HAMPTON-PORTSMOUTH 26485

Rail Trail Improvements Project
Federal Project # X-A003(355)

North Hampton, NH Board of
Selectmen

March 14, 2022

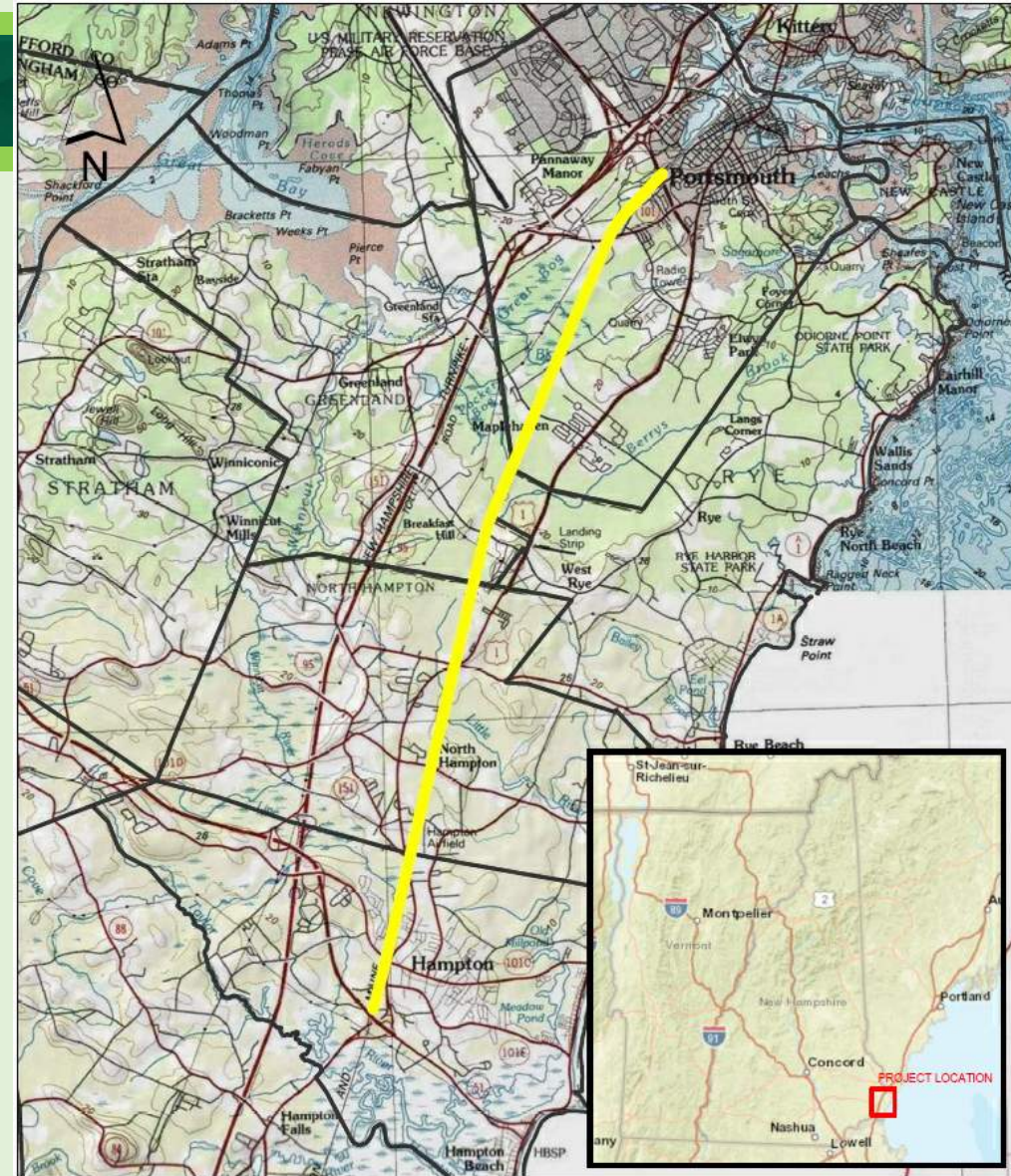


Engineering | Design | Planning | Construction Management



Project Location

- Hampton
- North Hampton
- Greenland
- Rye
- Portsmouth



HAMPTON-PORTSMOUTH - 26485

Purpose & Need

- The purpose of the project is to improve the condition of the existing railroad corridor to accommodate bicycles and pedestrians.



HAMPTON-PORTSMOUTH - 26485

➤ Proposed improvements include:

- Rail tie removal & disposal
- Vegetation clearing & invasive species removal
- Drainage upgrades and improvements, including closed drainage system replacement work in Hampton
- Surface drainage regrading
- Roadway crossing modifications
- Trail construction
- Bridge rehabilitation
- Cross culvert replacements

Environmental Concerns

HAMPTON-PORTSMOUTH - 26485

- **Soil contamination**
- **Historic Resources/Section 106**
- **Wetlands**



Engineering | Design | Planning | Construction Management



North Hampton Rail Trail Limits

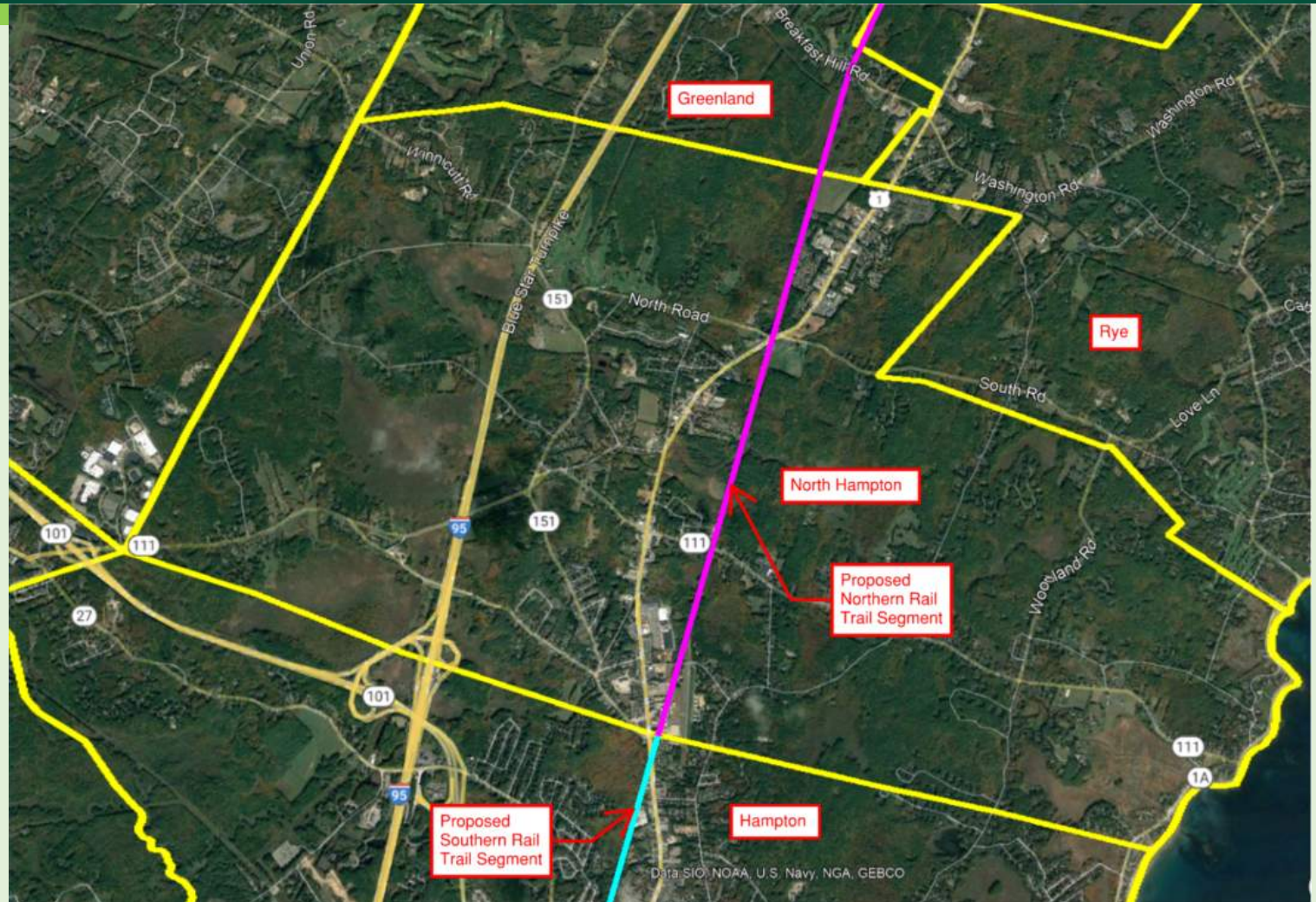
HAMPTON-PORTSMOUTH - 26485

GPI

New Hampshire
DOT
Department of Transportation

TEC
The Engineering Corp

 **McFarland Johnson**



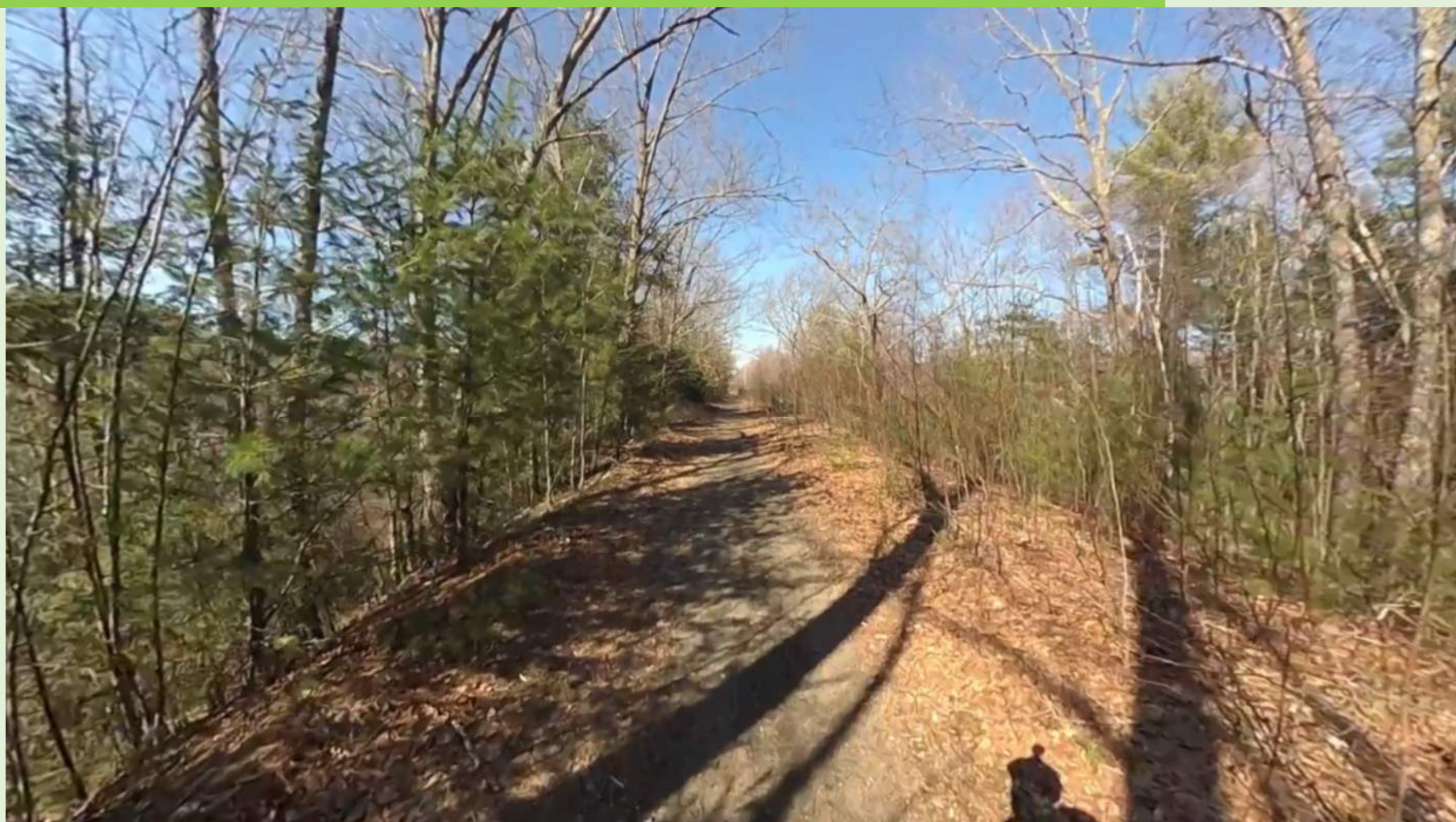
Stone Dust Rail Trail Sample Photo

HAMPTON-PORTSMOUTH - 26485



Site Photos

HAMPTON-PORTSMOUTH - 26485



Site Photos

HAMPTON-PORTSMOUTH - 26485



Site Photos

HAMPTON-PORTSMOUTH - 26485



Site Photos

HAMPTON-PORTSMOUTH - 26485



Site Photos

HAMPTON-PORTSMOUTH - 26485



Site Photos

HAMPTON-PORTSMOUTH - 26485



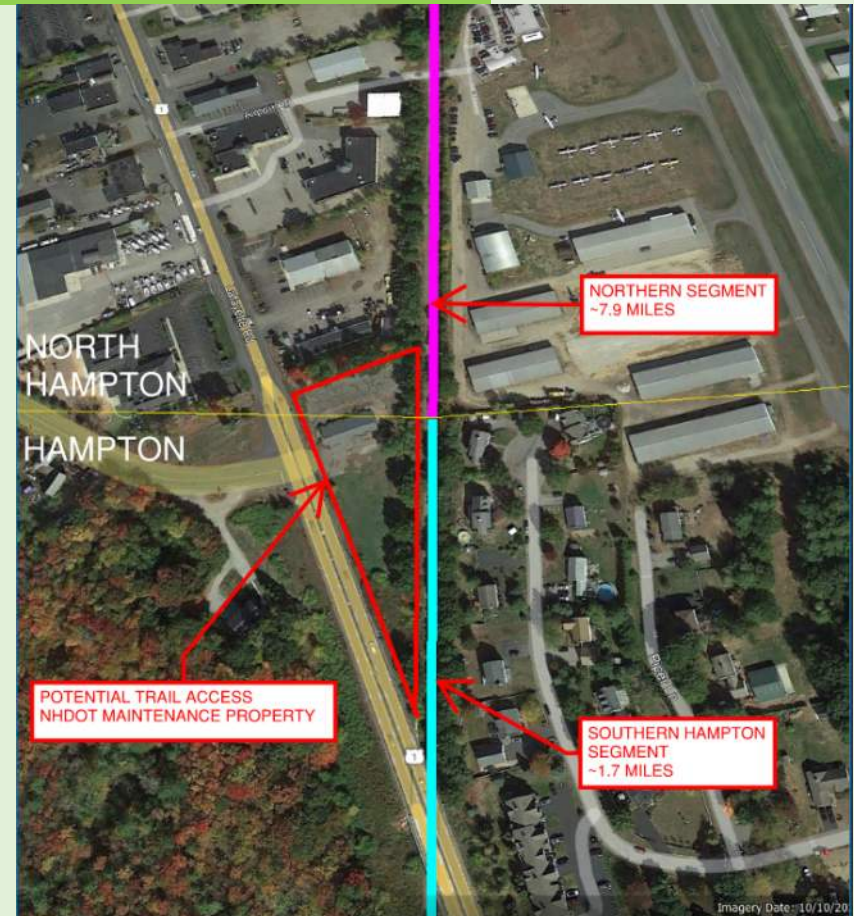
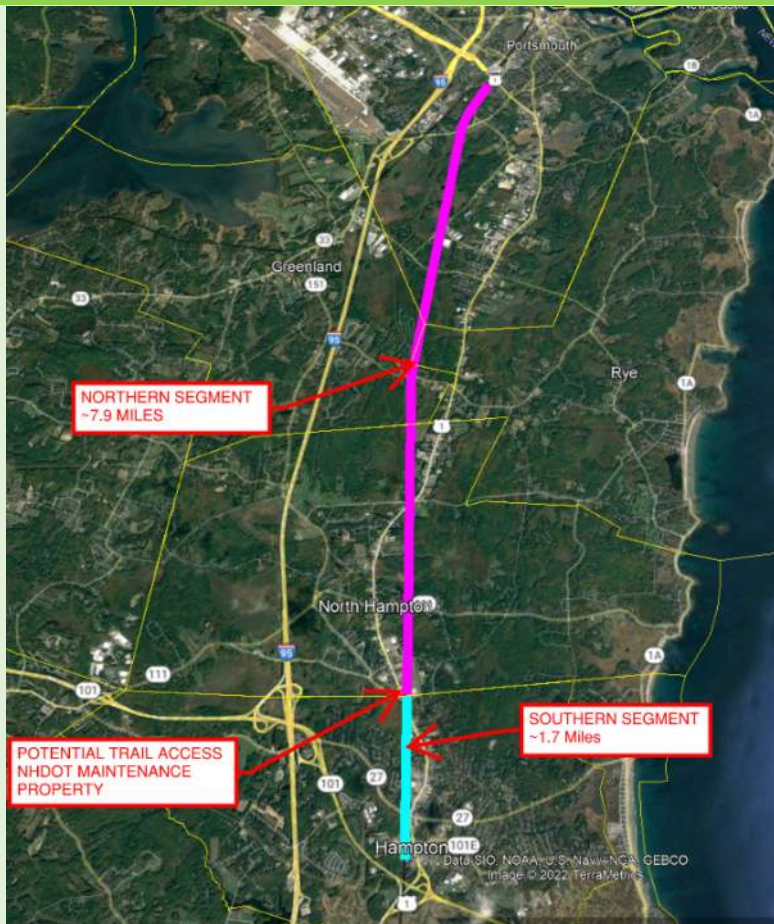
Site Photos

HAMPTON-PORTSMOUTH - 26485



9.6 Mile Corridor Split Into 2 Projects

HAMPTON-PORTSMOUTH - 26485



Engineering | Design | Planning | Construction Management



Preliminary Estimated Cost

HAMPTON-PORTSMOUTH - 26485

SEACOAST GREENWAY PRELIMINARY ESTIMATED COST PER MILE

Seacoast Greenway	Finished Surface	Trail Length (miles)	Estimated Cost	Estimated Price/mile
Northern 7.9 Mile Segment	12' Stone Dust	7.9	\$ 5,100,000	\$ 650,000
Southern 1.7 Mile Segment	12' Stone Dust	1.7	\$ 2,000,000	\$ 1,200,000



Engineering | Design | Planning | Construction Management

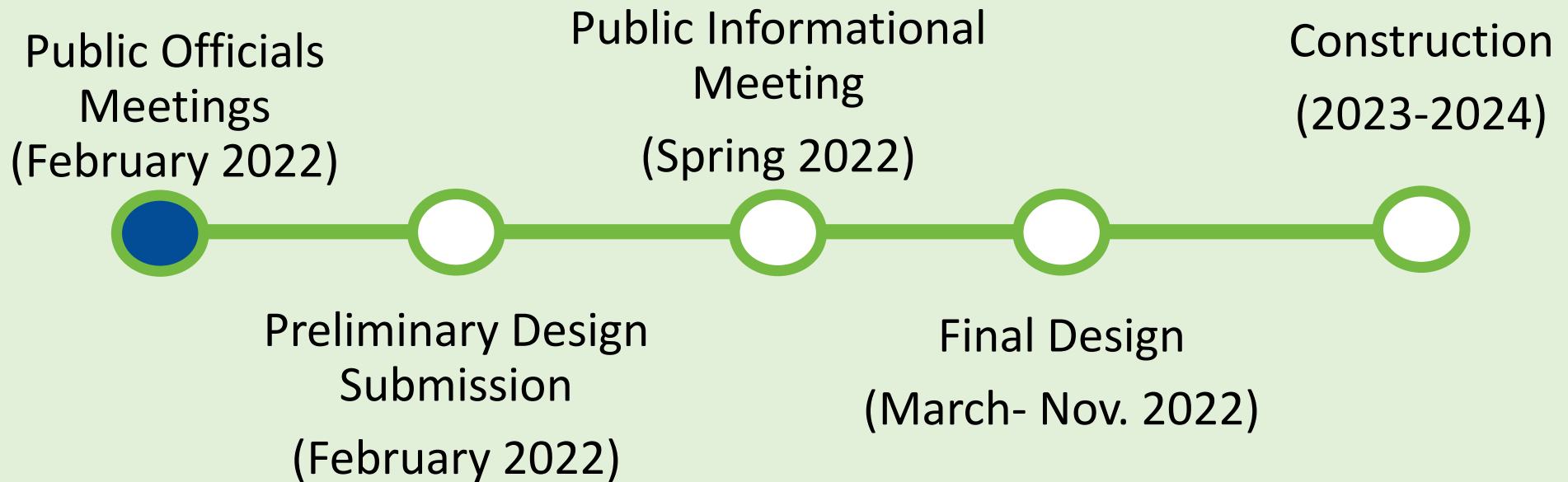


McFarland Johnson

Estimated Project Schedule

HAMPTON-PORTSMOUTH - 26485

Northern 7.9 Mile Segment



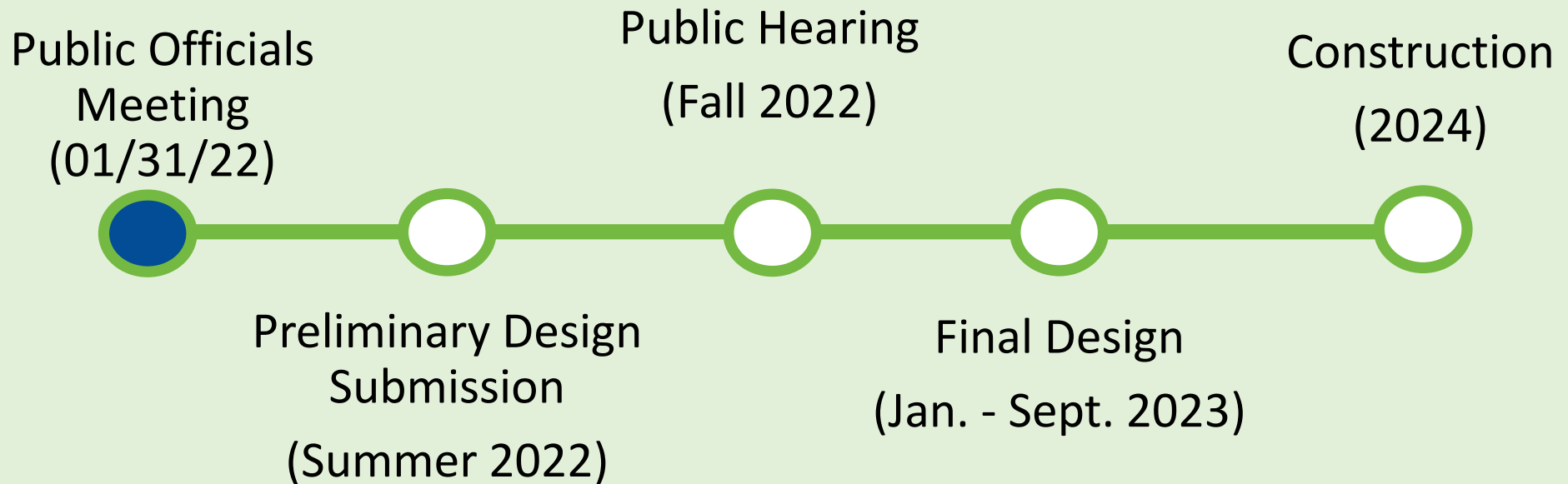
Engineering | Design | Planning | Construction Management



Estimated Project Schedule

HAMPTON-PORTSMOUTH - 26485

Southern 1.7 Mile Segment



Engineering | Design | Planning | Construction Management

