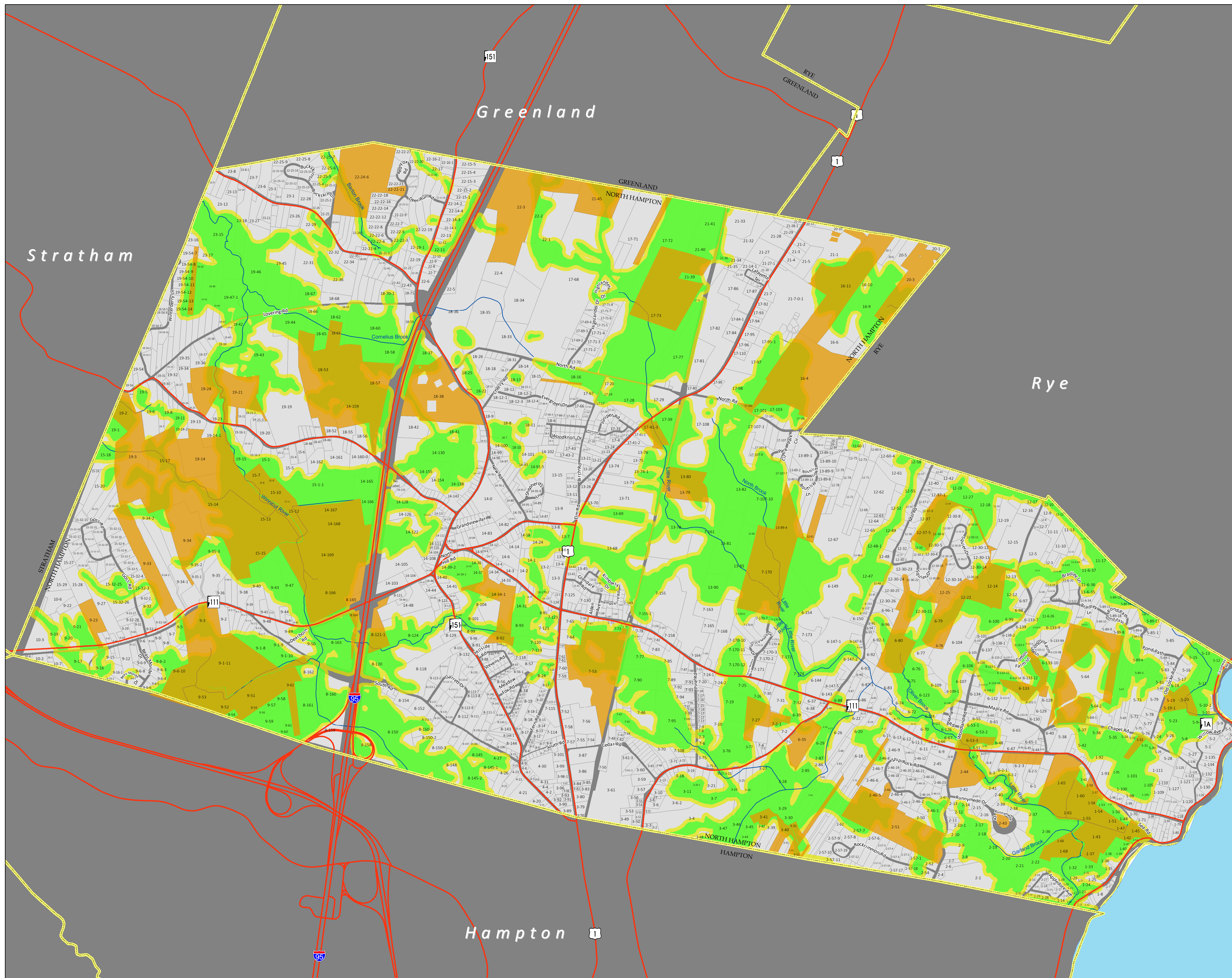


North Hampton Conservation, Wetlands

2014, Update 2017, 2020

- North Hampton Conservation Land (2020)
- Rivers/Streams
- N. Hampton Wetlands Conservation District
- N. Hampton Wetlands Conservation District - 100' Buffer
- 2007 Parcels
- Town Boundaries



This map is for planning purposes only. It should be noted the layers used on this map are from different scales. Parcel lines and wetland boundaries are approximations, and should not be used for site level planning.

Note: Protected parcels often have unprotected exclusion areas around homes and outbuildings (not shown on maps)

Coastal Wetlands (Wetland Conservation Dist.)
Wetlands maps developed with New Hampshire Coastal Program funds were automated for the Towns of Hampton, Hampton Falls, New Castle, North Hampton, Portsmouth, and Rye. The source documents consisted of Normandeau Associates wetlands delineations, originally mapped on uncorrected a remapped onto the appropriate town base map. For the Towns of Hampton, New Castle and Seabrook, The Normandeau maps were remapped onto 1:24,000 orthophototriangles prior to digitizing. Original mapping for the City of Portsmouth was completed by IEP, Inc., and was similarly transferred onto 1:24,000 orthophoto bases.

Parcels are supplied by James Verra and Assoc. and are updated to 2007, these parcels were converted to GIS by the RPC.

Road data provided by New Hampshire DOT, and is updated yearly.

