

North Hampton Safety Building

North Hampton, NH

Progress Print 12/13/21

Revision Schedule		
No.	Description	Date

MASTER ABBREVIATION KEY:

AB ANCHOR BOLT	E EAST	LAM LAMINATE	S SOUTH
AC AIR CONDITIONER	EJ EXPANSION JOINT	LAV LAVATORY	S-TRAP SEDIMENT TRAP
ACI AMERICAN CONCRETE INSTITUTE	EJC EXPANSION JOINT COVER	MAS MASONRY	SC SOLID CORE
ACOUST ACOUSTIC	EL ELEVATION	MAT MATERIAL	SCED SCHEDULE
AFF ABOVE FINISH FLOOR	ELEC ELECTRICAL	MAX MAXIMUM	SD STORM DRAIN
ALT ALTERNATE	ELEV ELEVATOR	MECH MECHANICAL	SF SQUARE FOOT
ALUM ALUMINUM	EQ EQUAL	MEM MEMBRANE	SH SHOWER
ANCH ANCHOR	EQUIP EQUIPMENT	MEP MECHANICAL, ELECTRICAL, PLUMBING	SHT SHEET
ANOD ANODIZED	ER EMERGENCY ROOM	METP METAL TOILET PARTITION	SIM SIMILAR
ASTM AMERICAN SOCIETY FOR TESTING MATERIALS	EST ESTIMATE	MFR MANUFACTURER	SL SLIDING
	EWC ELECTRICAL WATER COOLER	MH MANHOLE	SMR SINGLE PLY MEMBRANE ROOF
BD BOARD	EXH EXHAUST	MIN MINIMUM	SP/PNT/SN SPECIAL PAINT FINISH
BIT BITUMINOUS	EXIST EXISTING	MISC MISCELLANEOUS	SPEC SPECIFICATION
BL BUILDING LINE	EXP EXPANSION	MO MASONRY OPENING	SPKR SPEAKER
BLDG BUILDING	EXPD EXPANDED	MTL METAL	SQ SQUARE
BLK BLOCK	EXT EXTERIOR	MULL MULLION	SS STAINLESS STEEL
BLKG BLOCKING			STA STATION
BM BEAM	FF FACE OF FOUNDATION WALL	N NORTH	STD STANDARD
BOC BOTTOM OF CURB	FA FRESH AIR	NAT NATURAL	STL STEEL
BOF BOTTOM OF FOOTING ELEVATION	FAP FIRE ALARM PANEL	NEC NECESSARY	STOR STORAGE
BOT BOTTOM	FD FLOOR DRAIN	NIC NOT IN CONTRACT	STRG STRINGER
BRG BEARING	FE FIRE EXTINGUISHER	NOM NOMINAL	STRUCT STRUCTURAL
BRK BRICK	FEC FIRE EXTINGUISHER CABINET	NRC NOISE REDUCTION COEFFICIENT	SU SITE UTILITY
B5MT BASEMENT	FIN FINISH	NTS NOT TO SCALE	SUSP SUSPEND (SUSPENDED)
BTW BETWEEN	FL FLOW LINE	OC ON CENTER	SYMM SYMMETRICAL
BUR BUILT-UP ROOF	FLR FLOOR	OD OUTSIDE DIAMETER	SYS SYSTEM
	FND FOUNDATION	OF/C OUTSIDE FACE OF CONCRETE	T TREAD
CAB CABINET	FOF FACE OF FINISH	OH OVERHEAD	T&G TONGUE & GROOVED
CB CATCH BASIN	FOM FACE OF MASONRY	OPG OPENING	TFRM TOP OF FRAME
CER CERAMIC	FOS FACE OF STUD	OPP OPPOSITE	TSLB TOP OF SLAB
CF CUBIC FOOT	FR FIRE RATED	OR OPERATING ROOM	TB TACKBOARD
CI CAST IRON	FS FULL SIZE	FT FOOT	TEL TELEPHONE
CJ CONTROL JOINT	FT FOOT	PBD PARTICLE BOARD	TEMP TEMPORARY
CL CLOSET	FTG FOOTING	PCF POUNDS PER CUBIC FOOT	TERR TERRAZZO
CLCB CURBLESS CATCH BASIN	FUR FURRED (FURRING)	PL PROPERTY LINE	THK THICK
CLG CEILING	FVC FIRE VALVE CABINET	PLAM PLASTIC LAMINATE	THLD THRESHOLD
CM CONTRACT MANAGER	GA GAUGE	PLAS PLASTER	TOC TOP OF CURB
CMU CONCRETE MASONRY UNIT	GALV GALVANIZED	PLYWD PLYWOOD	TOF TOP OF FOUNDATION
CO CLEAN OUT	GEN GENERAL CONTRACTOR	PNL PANEL	TOS TOP OF SLAB
COL COLUMN	GL GLASS	PSF POUNDS PER SQUARE FOOT	TOW TOP OF WALL ELEVATION
COMP COMPACTED (COMPOSITION)	GLZ GLAZING	PSI POUNDS PER SQUARE INCH	TR TO REMAIN
CONC CONCRETE	GRD GRADE	PT PAINT	TYP TYPICAL
CONST CONSTRUCTION	GYP GYPSUM	PTD PAINTED	UH UNIT HEATER
CONT CONTINUOUS	H&V HEATING & VENTILATING	PTN PARTITION	UL UNDERWRITERS LABORATORIES, INC.
CONTR CONTRACTOR	HC HANDICAP	PVC POLYVINYL CHLORIDE	UOD UNLESS OTHERWISE NOTED
CORR CORRUGATED	HDWD HARDWOOD	QT QUARRY TILE	UON UNLESS OTHERWISE NOTED
CP CONTROL PANEL	HGT HEIGHT	R RADIUS	UR URINAL
CSG CASING	HM HOLLOW METAL	R/A RETURN AIR	UV UNIT VENTILATOR
CSMT CASEMENT	HP HIGH POINT	RC REINFORCED CONCRETE	VAR VARIES OR VARIABLE
CT CERAMIC TILE	HYAC HEATING, VENTILATION, AIR CONDITIONING, HOT WATER HEATER	RD ROOF DRAIN	VB VINYL BASE
CTR CENTER		REF REFERENCE	VCT VINYL COMPOSITION TILE
CY CUBIC YARD		REFR REFRIGERATOR	VERT VERTICAL
		REIN REINFORCE	VEST VESTIBULE
		REQD REQUIRED	VIF VERIFY IN FIELD
DF DRINKING FOUNTAIN		RGH ROUGH	VNR VENER
DIA DIAMETER		RL RAIN LEADER	VOL VOLUME
DIAG DIAGONAL		RM ROOM	W WEST
DIM DIMENSION		RO ROUGH OPENING	WI WITH
DL DEAD LOAD		ROW RIGHT OF WAY	WC WATER CLOSET
DN DOWN		RQMT REQUIREMENT	WD WOOD
DR DOOR			WDW WINDOW
DS DOWNSPOUT			WGL WIRE GLASS
DS/C DRIVE SIDE OF CURB			WP WEATHERPROOF (WATERPROOFING)
DTL DETAIL			WPF WELDED WIRE FABRIC
DWG DRAWING			

LOCUS MAP: (N.T.S.)

DRAWING SHEET INDEX:

Sheet	Sheet Name	Issued	Revision	Revision Date
A1	First Floor Plan	12/13/21		
A2	Second Floor Plan	12/13/21		
A3	Exterior Elevations	12/13/21		
A4	Exterior Color Renderings	12/13/21		

Architect of Record:

T|W Designs, LLC
254 Drake Hill Rd.
Strafford, NH 03884
603-664-2181

Civil Engineer:

XXX

Structural Engineer:

XXX

Electrical Engineer:

XXX

Mechanical Engineer:

XXX

Fire Protection Eng.:

XXX

General Contractor:

Ricci Construction
Portsmouth, NH

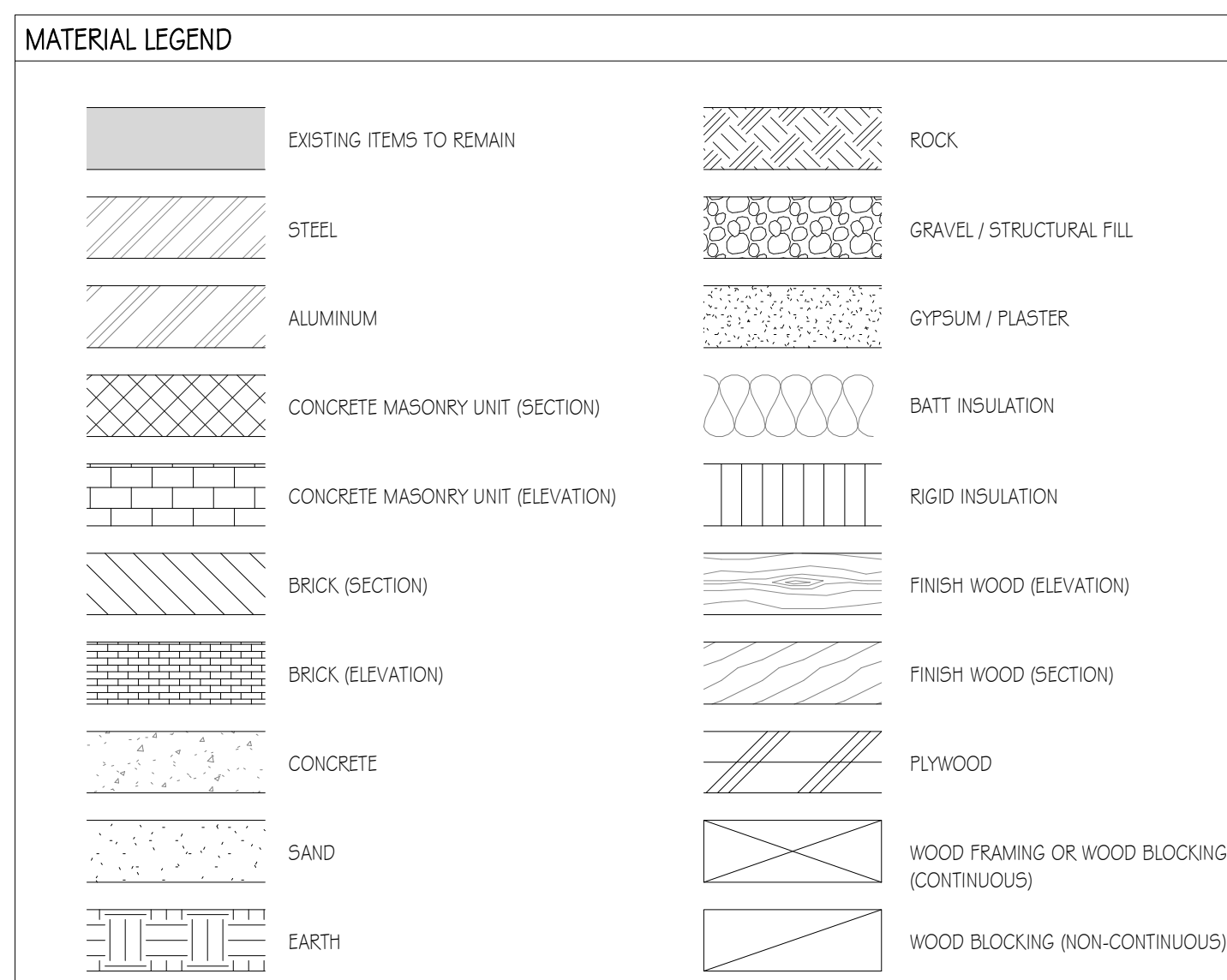
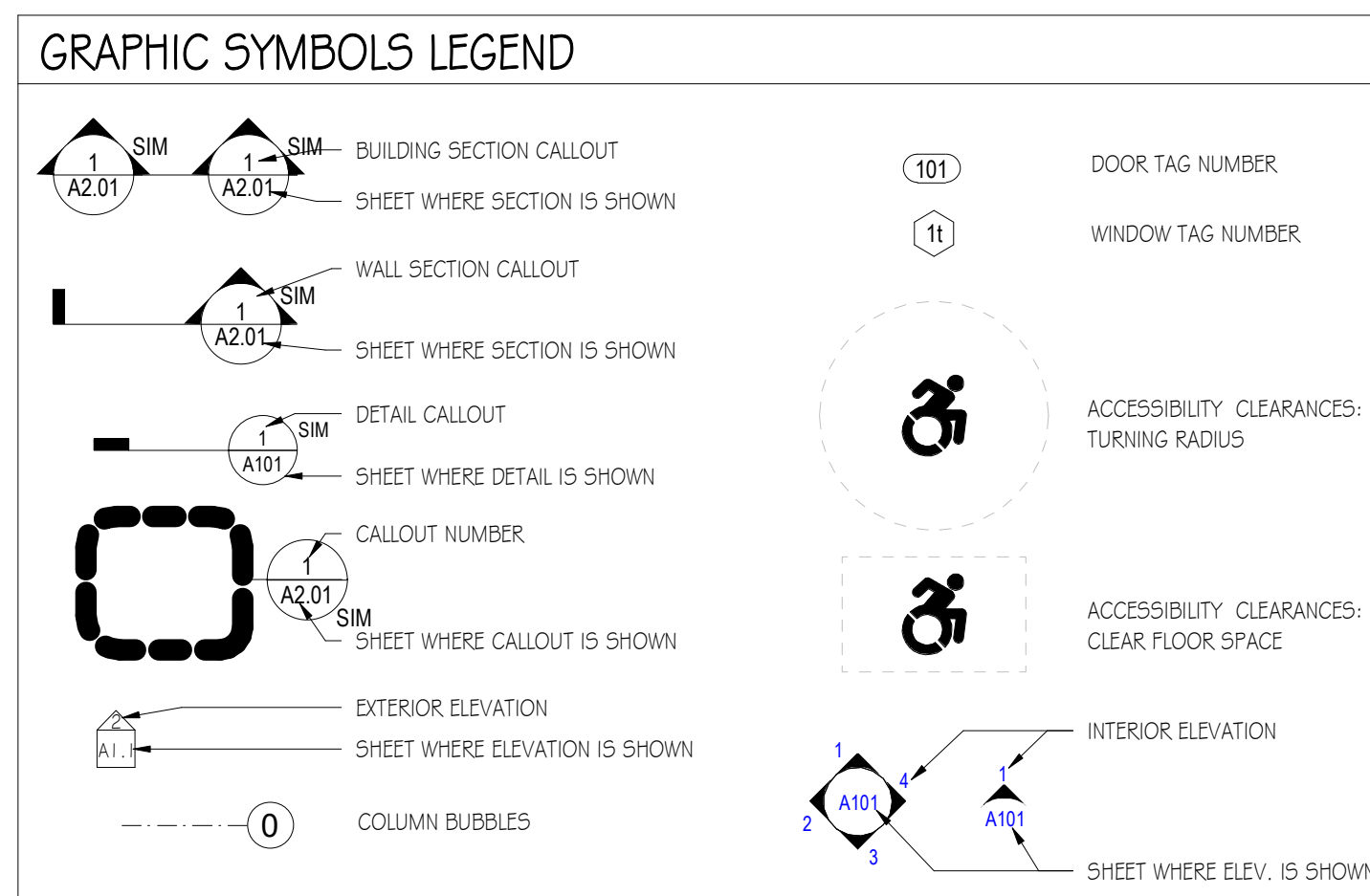
Project Info:

XXX

21018
Project Cover
Sheet

SHEET NUMBER

PCS



GENERAL NOTES:

- DO NOT SCALE DRAWING OR DIMENSIONS. FOR MISSING DIMENSIONS OR DIMENSIONS IN CONFLICT, CONTACT THE CONTRACTOR IMMEDIATELY BEFORE CONTINUING WITH WORK.
- ANY DISCREPANCIES IN THESE PLANS WILL BE BROUGHT TO THE CONTRACTOR'S ATTENTION IN WRITING IMMEDIATELY.
- REFER TO MECHANICAL, ELECTRICAL, PLUMBING, AND FIRE PROTECTION DESIGN-BUILD PLANS AND SPECIFICATION FOR LOCATIONS OF ALL BLOCK OUTS, INSERTS, OPENINGS, CURBS, BASES, & PADS THAT ARE NOT DIMENSIONED OR SHOWN ON CONTRACTOR'S DWG'S OR STRUCTURAL DWG'S.
- STRUCTURAL STEEL, MECHANICAL, ELECTRICAL, PLUMBING, AND FIRE PROTECTION PLANS AND SPECIFICATION SHALL BE PROVIDED AND ARE THE RESPONSIBILITY OF THESE RESPECTIVE SUBCONTRACTORS IF NOT CARRIED IN ARCHITECTURAL SERVICES.
- ALL CONSTRUCTION SHALL CONFORM TO AND BE IN ACCORDANCE WITH THE REGULATOR REQUIREMENTS MANDATED BY ALL FEDERAL, STATE AND LOCAL AUTHORITIES HAVING JURISDICTION IN ACCORDANCE TO THE STATE IN WHICH THE WORK IS PERFORMED (STATE BUILDING CODE, STATE LIFE SAFETY & FIRE CODE ETC.)
- THE CONTRACTOR SHALL REVIEW ALL DOCUMENTS AND VERIFY ALL DIMENSIONS AND FIELD CONDITIONS, AND SHALL CONFIRM WORK IS BUILDABLE AS SHOWN. ANY CONFLICTS OR OMISSIONS, ETC. SHALL BE IMMEDIATELY REPORTED IN WRITING TO THE ARCHITECT FOR CLARIFICATION.
- DIMENSIONS ARE FROM EXTERIOR FACE OF FOUNDATION, VENEER, OR WALL STUD AND TO CENTER OF ALL INTERIOR STUD WALLS OR FACE OF INTERIOR MASONRY. UNLESS NOTED OTHERWISE.
- CLEAR DIMENSIONS ARE FROM FACE TO FACE OF WALL FINISH, UNLESS NOTED OTHERWISE.
- REFER TO MECHANICAL DRAWINGS / SPEC. FOR ALL SIZES AND LOCATIONS OF MECHANICAL DUCT WORK.
- UNLESS OBVIOUSLY SHOWN OTHERWISE, DOOR LOCATIONS NOT DESIGNATED BY WRITTEN DIMENSION SHALL BE CENTERED IN THE WALL OR SHALL BE LOCATED FOUR (4) INCHES FROM FINISH WALL TO EDGE OF DOOR JAMB, PER PLAN.
- PROVIDE METAL CORNER BEAD AT ALL OUTSIDE CORNERS OF PLASTERED OR DRYWALL SURFACES, UNLESS NOTED OTHERWISE.
- PENETRATIONS OF ALL FIRE RATED ASSEMBLIES SHALL BE PROTECTED BY LIKE RATED CONSTRUCTION DAMPERS, SEALANTS, COLLARS, ETC., TYPICAL.
- CONTRACTOR SHALL FURNISH, LOCATE AND INSTALL ALL ACCESS PANELS AS REQUIRED AFTER INSTALLATION OF MECHANICAL DUCTS, PLUMBING AND ELECTRICAL WORK, FIRE RATED AS REQUIRED.
- FURNISH AND INSTALL SOLID BLOCKING BEHIND ALL WALL HUNG MILLWORK ITEMS, RAILS, FIXTURES, GRAB BARS, ETC., WHERE INDICATED OR REQUIRED.
- CONTRACTOR SHALL LAYOUT OR MARK, ALL EQUIPMENT, SYSTEMS AND MILLWORK ON THE FLOOR FOR ARCHITECT OR OWNER'S APPROVAL PRIOR TO BEGINNING CEILING / OVER HEAD WORK.
- ALL SPRINKLER HEAD LOCATIONS, MAINS, BRANCHES AND RISER PIPE LOCATIONS MUST BE COORDINATED WITH THE DESIGN / BUILD CONTRACTOR PRIOR TO WORK.
- FURNISH AND INSTALL FIRE EXTINGUISHERS IN TYPE, QUANTITY, AND LOCATION PER LOCAL FIRE DEPARTMENT, TYPICAL.
- CONTRACTOR SHALL VERIFY, COORDINATE LOCATION WITH THE ARCHITECT ANY SMOKE, CARBON MONOXIDE DETECTOR OR FIRE ALARM DEVICE AS REQUIRED BY THE LOCAL FIRE DEPARTMENT.
- FURNISH & INSTALL FIRE DAMPERS WITH FUSIBLE LOUVER WHEREVER DUCT WORK PENETRATES ONE OR TWO HOUR CEILINGS OR WALLS. TYPICAL UNLESS NOTED OTHERWISE.
- PROVIDE PLASTER AND GYPSUM WALL BOARD CONTROL JOINTS AT 30'-0" ON CENTER FROM FLOOR TO CEILING, OR AS NOTED ON THE CONSTRUCTION DOCUMENTS. VERIFY IN FIELD WITH ARCHITECT PRIOR TO WORK.



1st Floor Net Area		
Department	Occupancy	Area
Fire	Circulation	803 SF
Fire	Office	1602 SF
Fire	Storage	221 SF
Fire	Support	7924 SF
Fire		10551 SF

Police	Circulation	343 SF
Police	Office	1305 SF
Police	Storage	288 SF
Police	Support	2031 SF
Police		3968 SF

Shared	Circulation	620 SF
Shared	Utility	84 SF
Shared		705 SF
Total Net Area		15223 SF

Total First Floor Gross Area: 16,011 s.f.

Department Legend

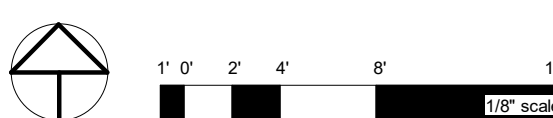
- Fire
- Police
- Shared

Total Facility Net Area		
Department	Occupancy	Area
Fire	Circulation	1457 SF
Fire	Office	1602 SF
Fire	Storage	2456 SF
Fire	Support	10715 SF
Fire		16230 SF

Police	Circulation	819 SF
Police	Office	1808 SF
Police	Storage	699 SF
Police	Support	3855 SF
Police		7181 SF

Shared	Circulation	1475 SF
Shared	Storage	112 SF
Shared	Support	594 SF
Shared	Utility	84 SF
Shared		2265 SF
Total Net Area		25677 SF

1st Fl.: 15,930 + 2nd Fl.: 10,647
Total Gross Area: 26,577 s.f.





Department Legend

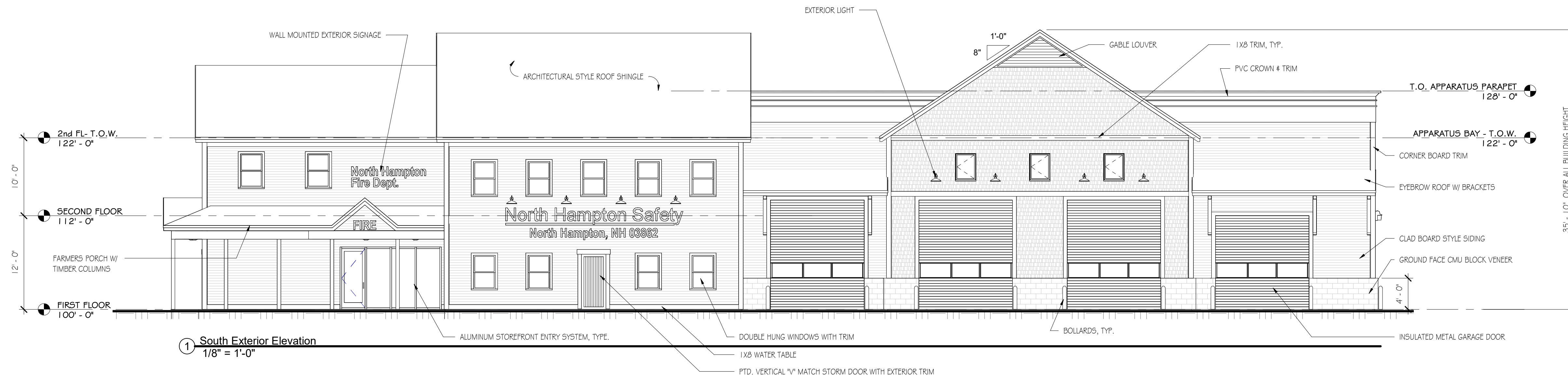
- Fire
- Police
- Shared

2nd Floor Net Area		
Department	Occupancy	Area
Fire	Circulation	654 SF
Fire	Storage	2235 SF
Fire	Support	2791 SF
Fire		5680 SF

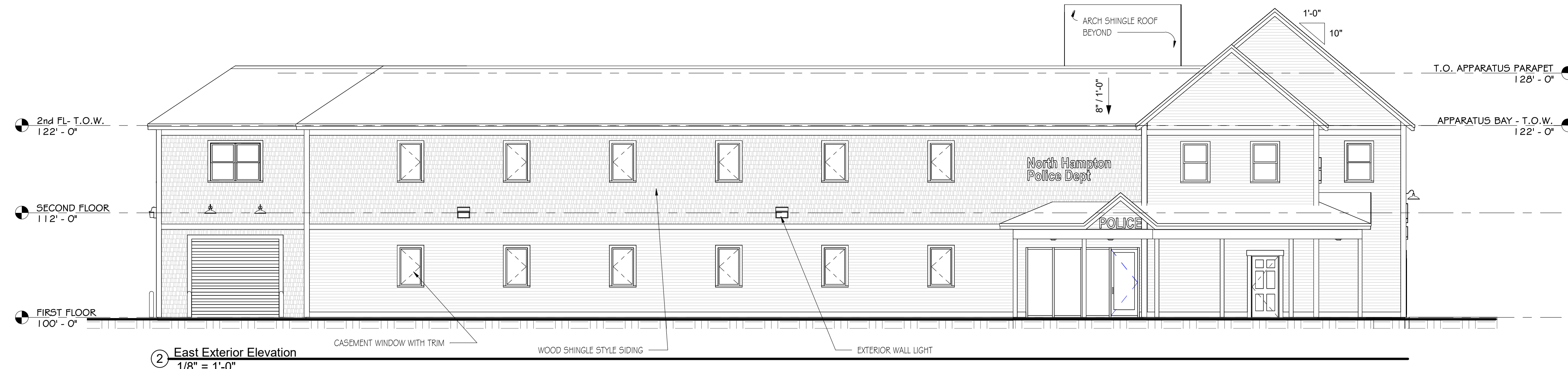
Police	Circulation	475 SF
Police	Office	503 SF
Police	Storage	411 SF
Police	Support	1824 SF
Police		3213 SF

Shared	Circulation	855 SF
Shared	Storage	112 SF
Shared	Support	594 SF
Shared		1561 SF
Total Net Area		10454 SF
Total Second Floor Gross Area: 10,647 s.f.		





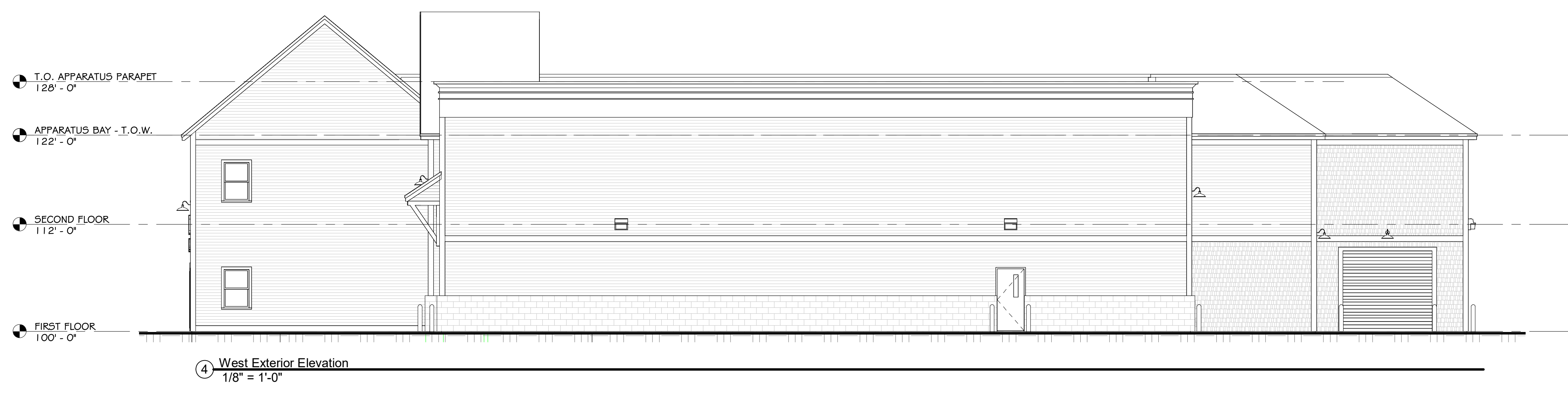
1 South Exterior Elevation
1/8" = 1'-0"



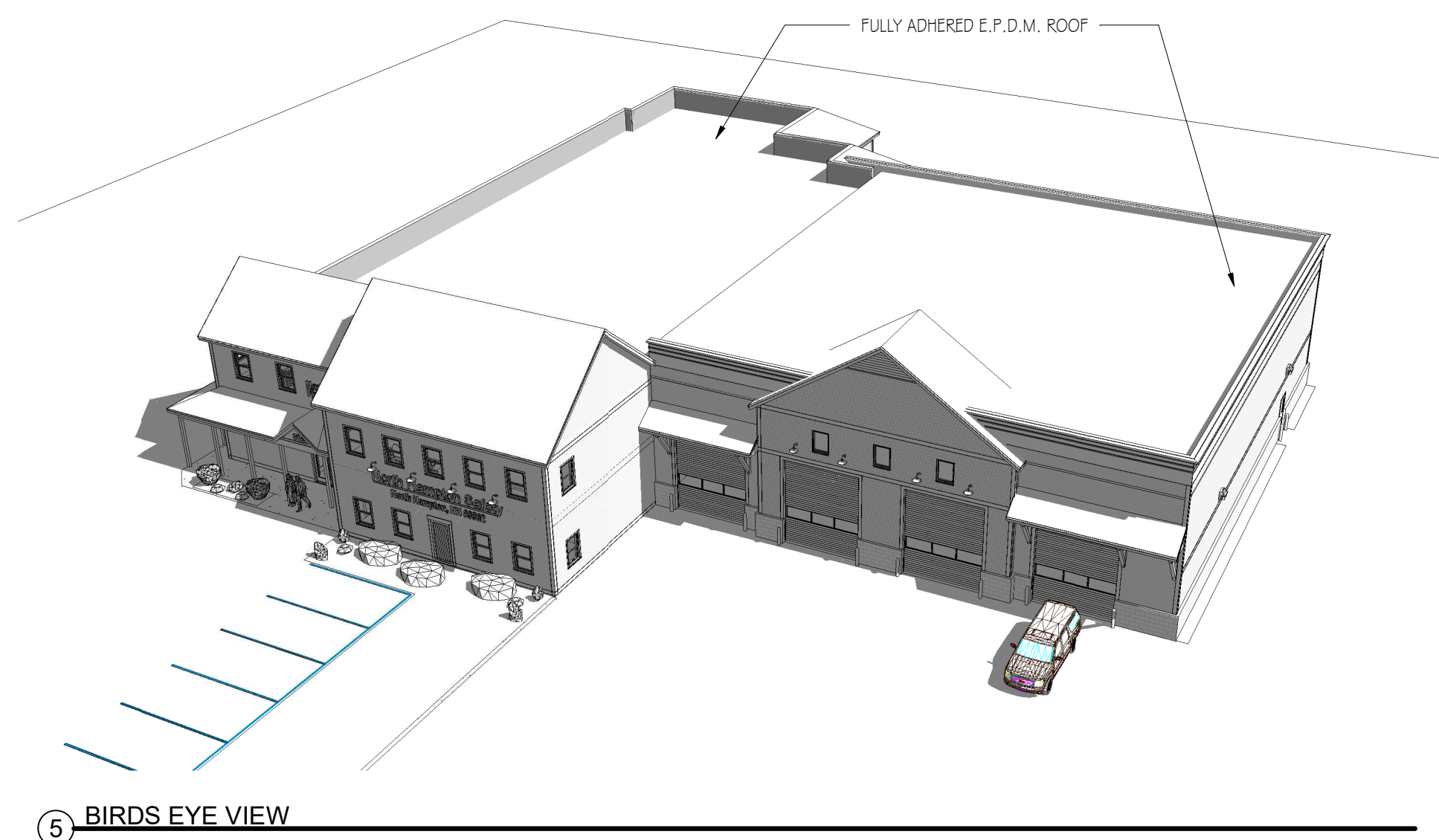
2 East Exterior Elevation
1/8" = 1'-0"



3 North Exterior Elevation
1/8" = 1'-0"



4 West Exterior Elevation
1/8" = 1'-0"



5 BIRDS EYE VIEW

No.	Description	Date
	Revision Schedule	

Project Info:
North Hampton Safety Building
North Hampton, NH

Sheet Status:
Latest Release:
Issued For: Progress Print
Orig. Issue Date: 12/13/21
JOB NO: 21018
DRAFTED: JMT
CHECKED: JMT
SCALE: 1/8" = 1'-0"

Sheet Title:
Exterior Elevations

Sheet Number:
A3

PROGRESS PRINT
12/11/2021



SOUTH SIDE VIEW FROM ATLANTIC AVE.



WEST SIDE VIEW FROM PARKING AREA