

NORTH HAMPTON CONSERVATION COMMISSION

TRAILS GUIDE

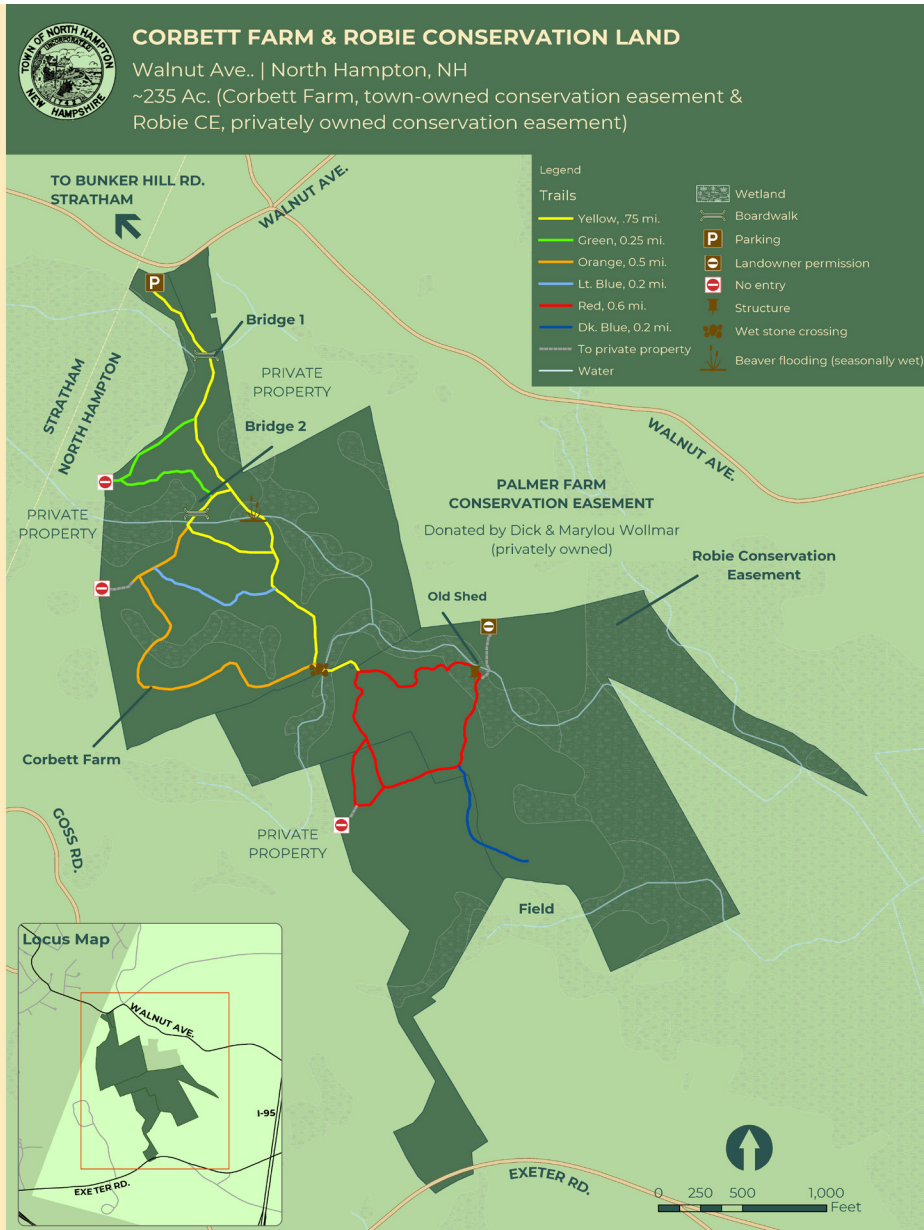
2023



Enjoy the Trails!

Please follow these guidelines when visiting North Hampton's Conservation Lands:

- Observe any postings on conservation parcels and respect private land.
- Carry out what you carry in.
- Leave things where and as you find them.
- Respect wildlife.
- Wear blaze orange for your own safety when hunting is permitted on conservation parcels.
- Guard against ticks, mosquitoes, and insects.



Directions and Parking:

The Corbett Farm and the Robie Conservation Land can be accessed from the Corbett Farm parking area off Walnut Road just past the Stratham/North Hampton town line. Parking is available in an off-road lot for 3-4 cars. **GPS Coordinates:** 42.989593, -70.876860

Description:

The Corbett Farm is located off Walnut Road. The Robie Conservation Land is located adjacent to and south of Corbett Farm, extending the trail network of wetlands, river frontage, and farmland.

The Robie Conservation Land contains a wide variety of habitat types, encompassing over 1700 feet of frontage on the Winnicut River and connects to over 200 acres of existing conserved land.

With clearly marked trails, visitors will find productive farmland, pasture land, woodlands and wetlands within the Winnicut River headwaters.

The Corbett Farm and the Robie Conservation Land are two separate conservation easements with public access, a town-owned conservation easement and a privately-owned, permanently protected conservation easement. Plan to spend 45-60 minutes exploring this trail network.

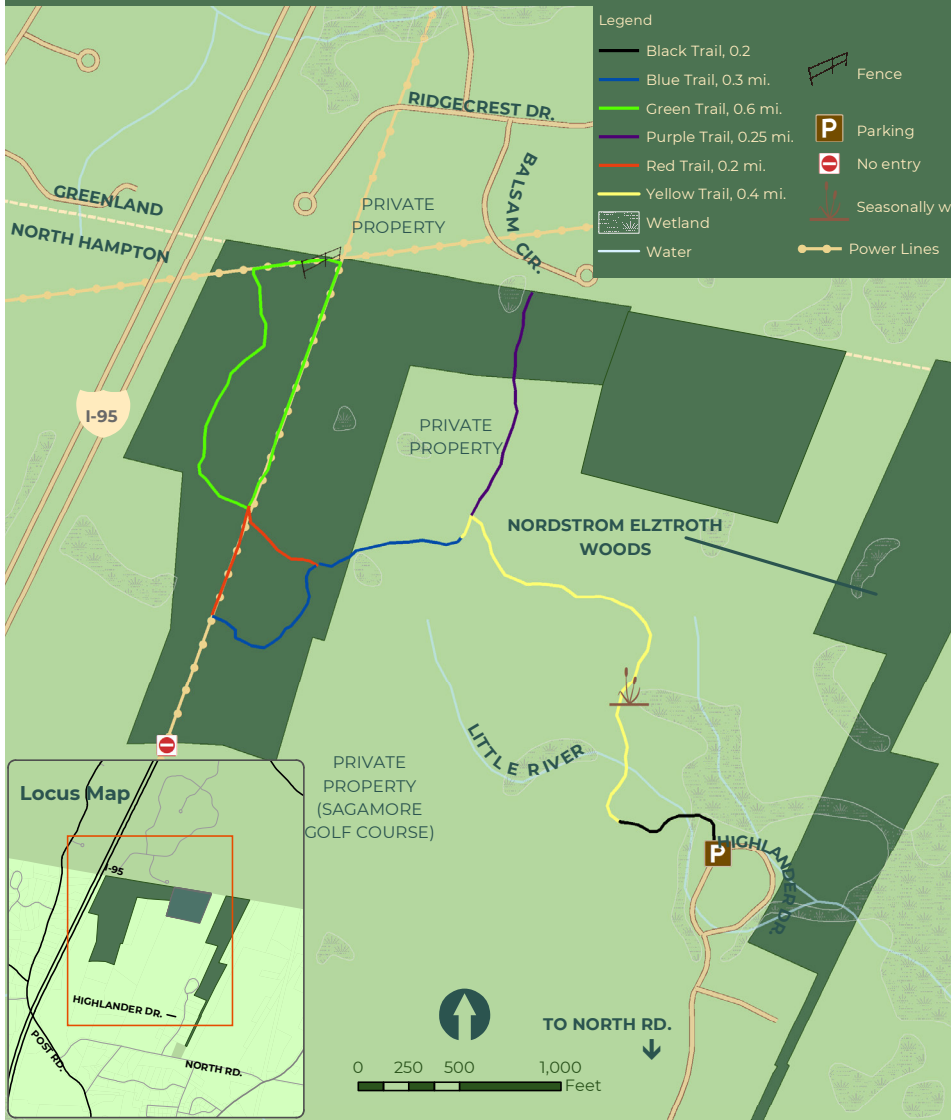
Hunting is permitted. Please use good judgement and wear orange for visibility.





FOREST HILLS FARM

Highlander Dr. | North Hampton, NH
~84 Ac. (town-owned conservation land/privately-owned access easement, Black/Yellow Trail)



Directions and Parking:

Forest Hills Farm can be accessed off the west side of Highlander Drive behind the Sagamore Golf Course. Curbside parking is available for 2-3 cars.

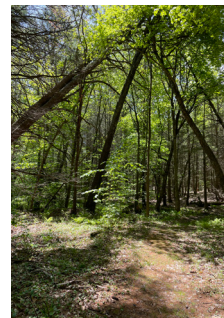
GPS Coordinates: 42.996775, -70.831249

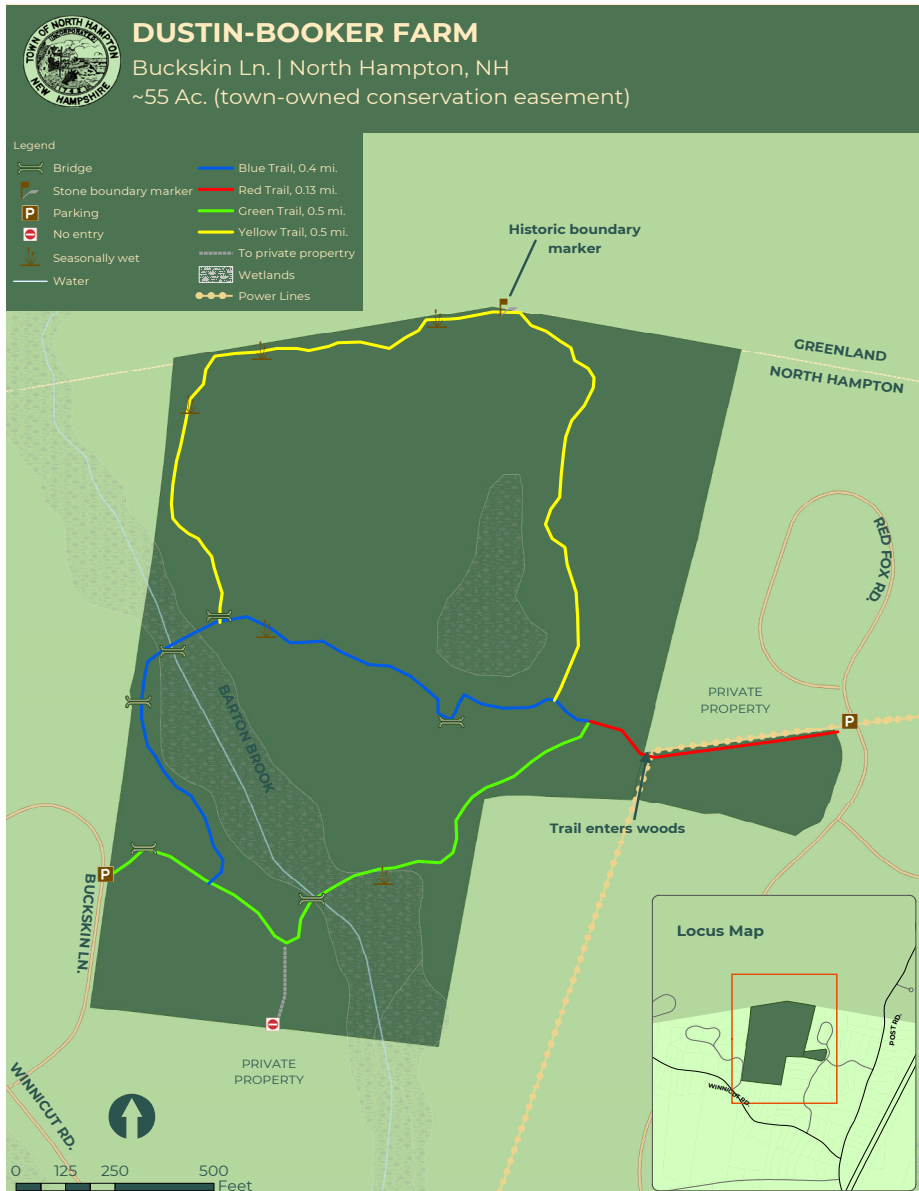
Description:

The entrance to the Forest Hills Farm is behind the Sagamore Golf Course and is accessed from the west side of the Highlander Drive loop. Scenic, year-round hiking is part of the trail system. This 84-acre parcel was acquired by the town in 2007 with help from a grant from the Coastal and Estuarine Land Conservation Program ("CELCP").

The property, within the headwaters of the Winnicut River, provides habitat important for the region, supporting a variety of wildlife including moose, deer, turkey, beaver, coyote, wood frogs, and migratory songbirds. The parcel is particularly important for wildlife as part of a larger unfragmented forest block of more than 500 acres, which is increasingly rare in the seacoast region of New Hampshire.

The trails are color coded and offer a mix of wetlands and upland forest. As you enter the woods on the **Black Trail** you may find a few wet areas. The **Yellow Trail** continues out to the larger Forest Hills Farm conservation land via the **Purple Trail**. The **Green Trail** will take you back out to the power lines where you can pick up the **Red Trail** under the power lines and loop back on the **Blue Trail**. This loop is approximately 2 miles and visitors should plan to spend at least 60-90 minutes visiting here.





Directions and Parking:

Dustin-Booker Farm can be accessed off the east side of Buckskin Lane before the first left curve or off Red Fox Road along the powerlines. Curbside parking is available for 2-3 cars.

GPS Coordinates for Buckskin Lane: 43.002597, -70.856781.

GPS Coordinates for Red Fox Road: 43.004083, -70.849689

Description:

The Dustin-Booker Farm is a 55-acre parcel that lies between Buckskin Lane and Red Fox Road along the northern border of North Hampton and Greenland.

The trails pass through wetlands that border Barton Brook, and some primitive bridges span the wet areas in places. You may observe porcupines on the property; interior is beautiful wooded upland with large pine and beech trees throughout. Along the boundary of Greenland and North Hampton visitors will find a historic stone boundary marker delineating the northernmost point of the Town of Hampton. Originally known as the "North Tree" boundary marker, it was also the border point for "North Hill Parish" which in 1742 was incorporated as North Hampton.

The trails are well marked with color coded markers. Note that in the spring when the grass is growing rapidly, it can be tricky to follow the trails. You are also likely to encounter some wet crossings, so plan accordingly.

The trail network is approximately 1.5 miles, and visitors should plan to spend 45-60 minutes walking these trails. Terrain is generally easy going but due to wet areas and occasional technical terrain, these trails rank in the moderate range of difficulty.



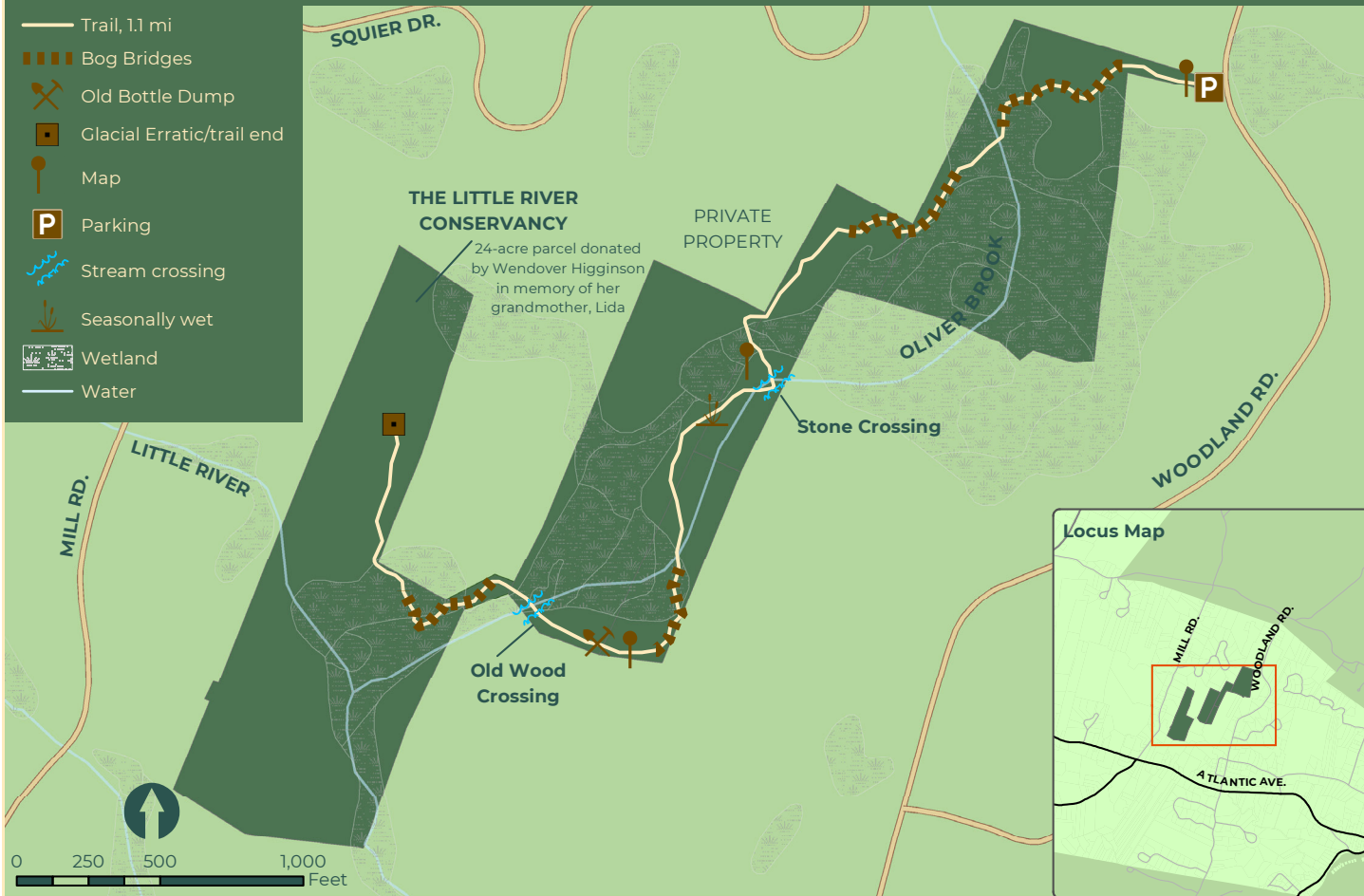


OLIVER BROOK TRAIL TO THE LITTLE RIVER CONSERVANCY

Woodland Rd. | North Hampton, NH
~64 Ac. (town-owned conservation land)

Legend

- Trail, 1.1 mi
- Bog Bridges
- Old Bottle Dump
- Glacial Erratic/trail end
- Map
- Parking
- Stream crossing
- Seasonally wet
- Wetland
- Water

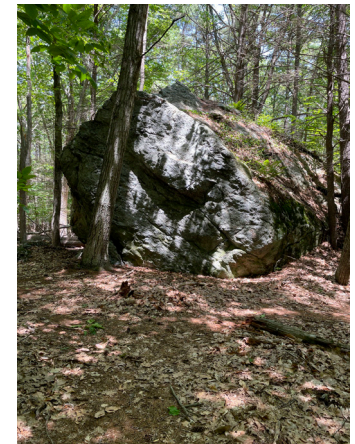


Directions and Parking:

The Oliver Brook Trail can be accessed off Woodland Road. Parking is available in an off-road lot for 3-4 cars.

GPS Coordinates:

42.976075, -70.791085



Description:

The Oliver Brook Trail to The Little River Conservancy is a hidden gem. A 1.1 mi. long trail passes over many bog bridges and terminates at an enormous glacier erratic. Along the way visitors are likely to see many signs of wildlife, from deer to owls and other flora and fauna. Visitors can observe nature in action and view the inner workings of a coastal wetland system that drains into Little River and the ocean. **The Little River Conservancy** is a 24-acre parcel comprised of wetlands, uplands, and large granite outcroppings. Plan to spend an hour hiking along this round trip 2.2 mile trail.