

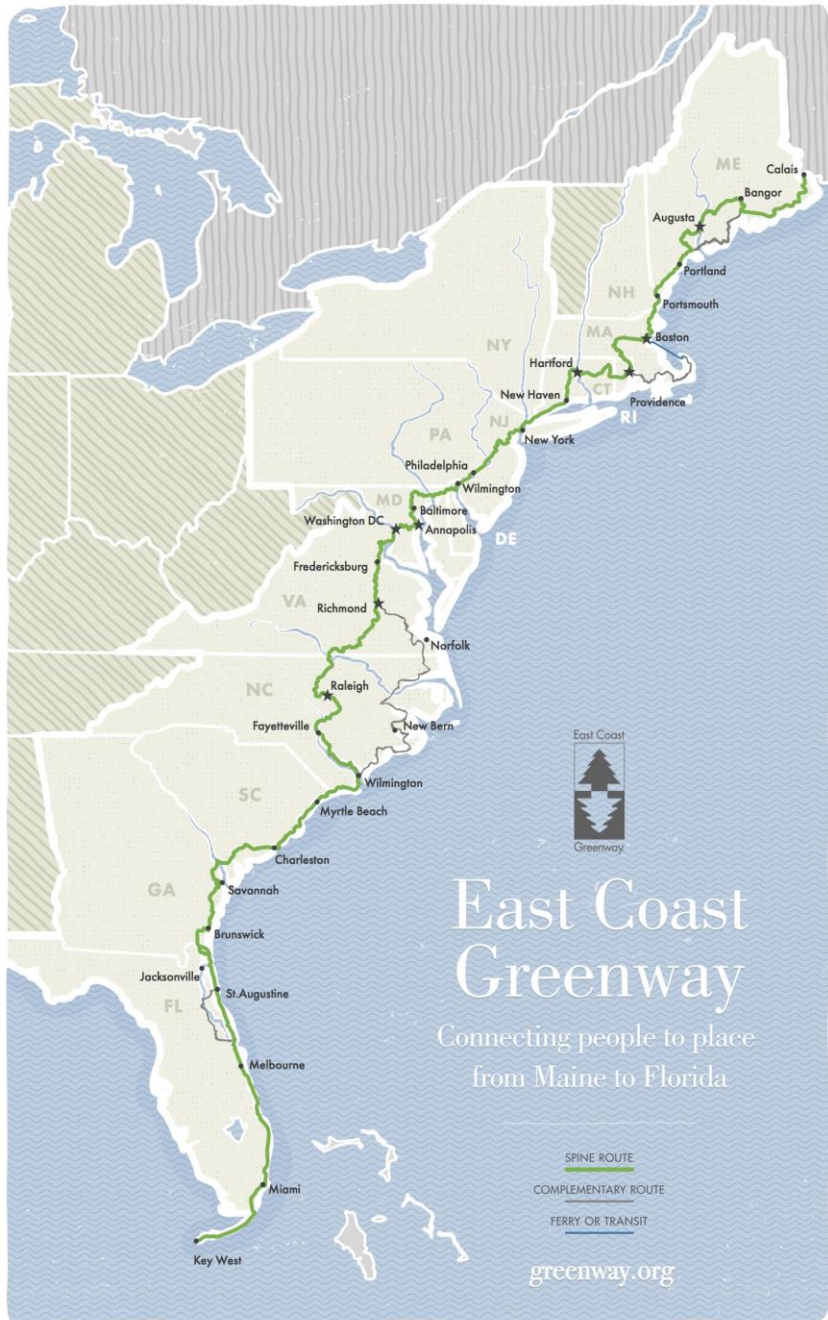
New Hampshire Seacoast Greenway Project Update & Trailhead Access Analysis



North Hampton Rail Trail Committee
May 5, 2021

East Coast Greenway

The East Coast Greenway is envisioned as an urban Appalachian Trail, extending 3,000 miles from Calais, ME to Key West, FL, connecting major cities, small towns and natural areas along the East Coast.



***Down East
Sunrise Trail,
Maine***



***Florida Keys
Overseas
Heritage Trail,
Florida***





The Greenway Through New England

321 miles completed off-road

199 miles in pipeline

58 miles alignment identified

169 miles current gap (on-road for now)

Connects New York City, New Haven, Hartford, Providence, Worcester, Boston, Newburyport, Portsmouth, Portland



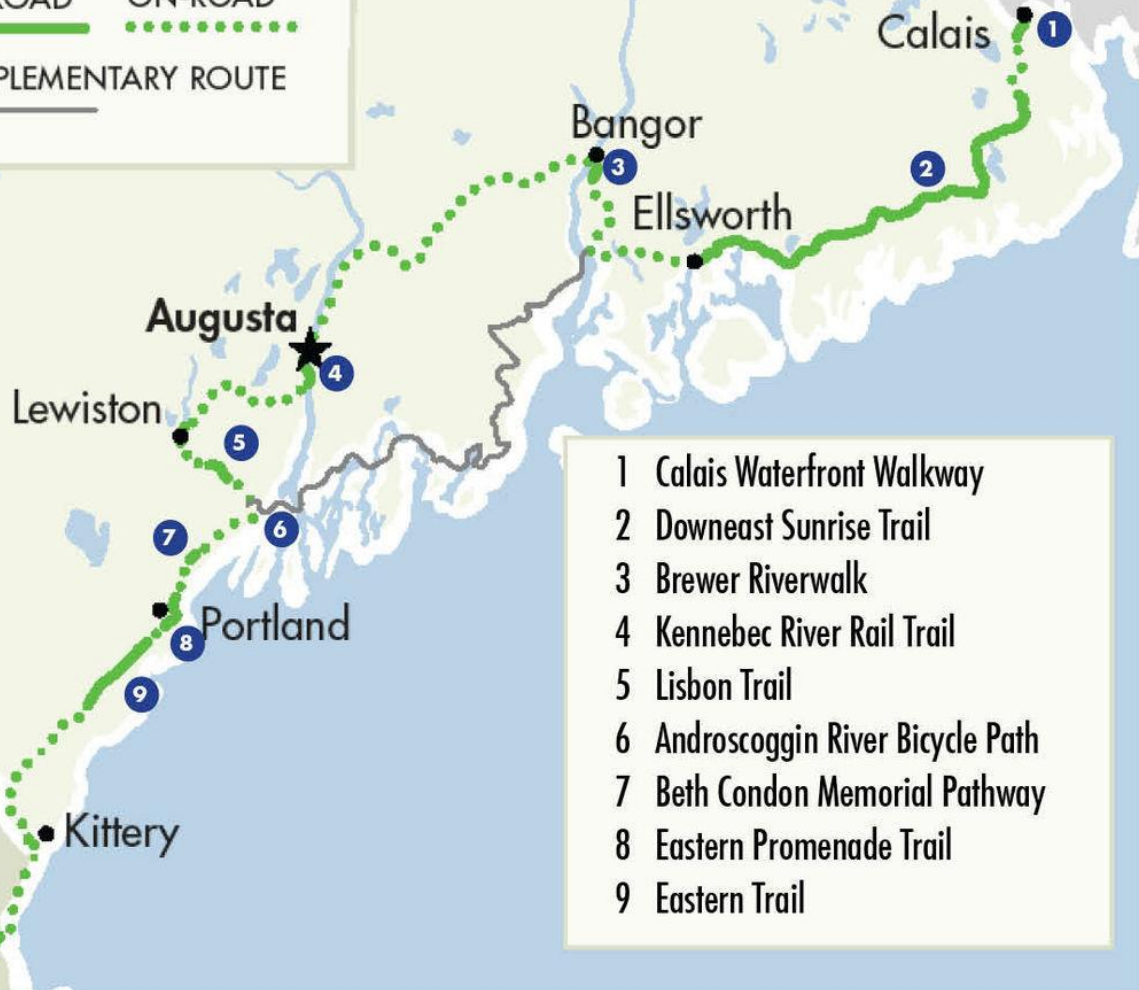
MAINE

367 SPINE ROUTE MILES

OFF-ROAD

ON-ROAD

COMPLEMENTARY ROUTE



- 1 Calais Waterfront Walkway
- 2 Downeast Sunrise Trail
- 3 Brewer Riverwalk
- 4 Kennebec River Rail Trail
- 5 Lisbon Trail
- 6 Androscoggin River Bicycle Path
- 7 Beth Condon Memorial Pathway
- 8 Eastern Promenade Trail
- 9 Eastern Trail

Neighboring States: Maine



East Coast



Greenway.

MASSACHUSETTS

138 SPINE ROUTE MILES

OFF-ROAD

ON-ROAD

COMPLEMENTARY ROUTE

- 1 Clipper City Rail Trail
- 2 Border to Boston Trail
- 3 Marblehead Rail Trail
- 4 Northern Strand Community Trail
- 5 Charles River Bike Path
- 6 Massachusetts Central Rail Trail
- 7 Blackstone River Bikeway
- 8 East Bay Bike Path (RI)
- 9 Phoenix Rail Trail
- 10 Cape Cod Canal Bikeway
- 11 Cape Cod Rail Trail



Neighboring States: Massachusetts





NH Seacoast Greenway Project Update



Phase I – Hampton-Portsmouth (9.7 mi)

*Permitting work underway
Design contract in progress
Construction likely 2023*



Phase II – Seabrook (2.2 mi)

In TYP for 2030



Phase III – Hampton Falls Marsh (2.3 mi)

Proposed for 2023-2032 TYP

National Park Service Technical Assistance Grant

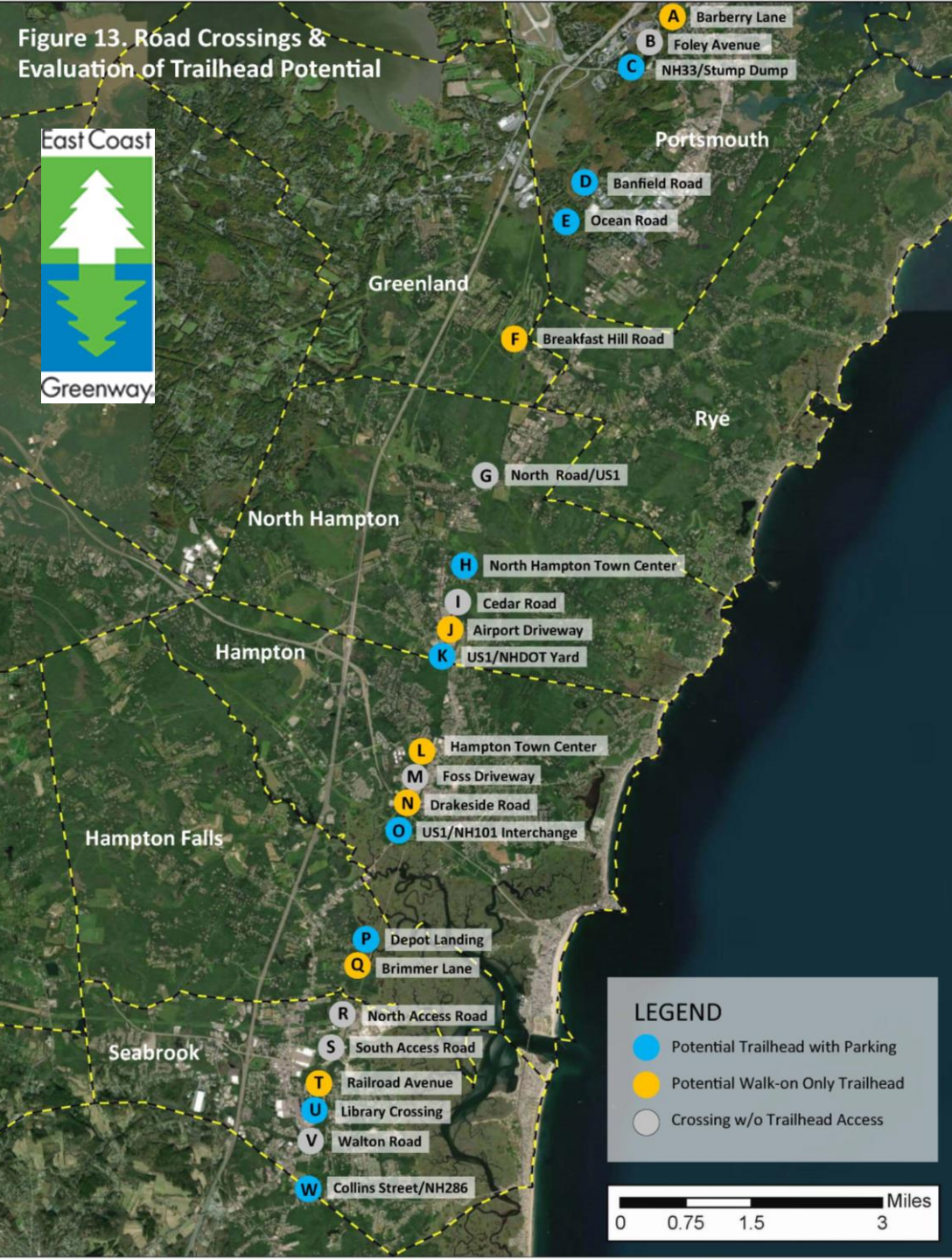
NPS Rivers, Trails & Conservation Assistance Program

Awarded for 12 months with 5/1/21 start date

Proposed Tasks

- **Community connections planning**
- **Trail signage & wayfinding plan**
- **Interpretative signage design**
- **Trailhead conceptual design**
- **NHSGA development and communication strategy**





NH Seacoast Greenway Trailhead Access Analysis

23 Road Crossings of Hampton Branch between Portsmouth and Seabrook

Potential trailhead with parking (9) ●

Potential walk-on only trailhead (7) ●

Crossing without trailhead potential (7) ●

Trailhead Access Analysis

Ideal Trailhead Elements

- Kiosk with maps and information
- Safe connections to nearby destinations
- Wayfinding signage
- Parking
- Restroom facilities
- Equestrian access



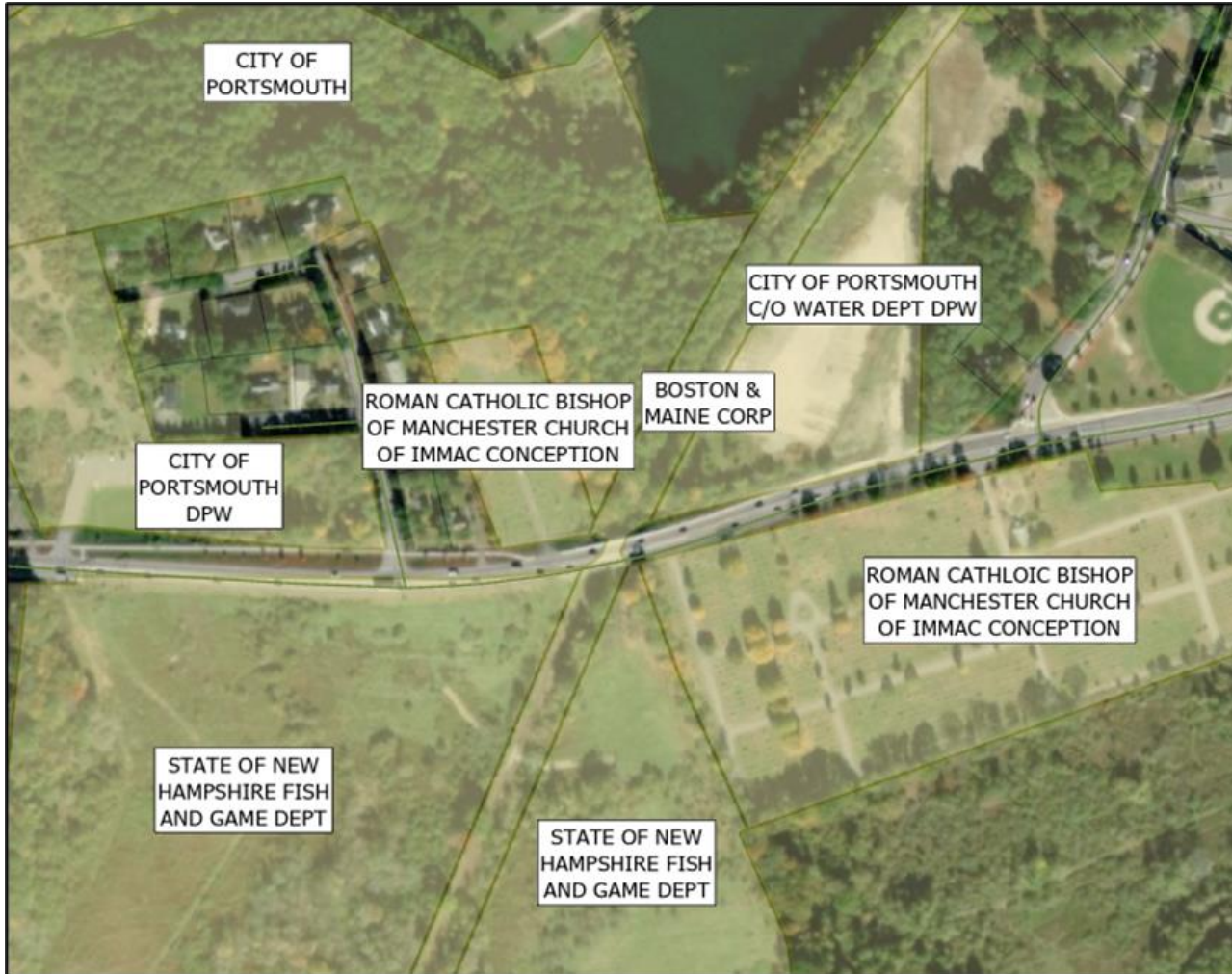
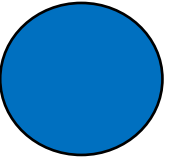
Trailhead Access Analysis

Management Considerations

- **Maintenance**
- **Enforcement**
- **Access Control**
- **Amenities (water, seating, trash)**
- **Lighting and Security**



Crossings with Trailhead Parking Potential



Site: NH33/Stump Dump

City: Portsmouth

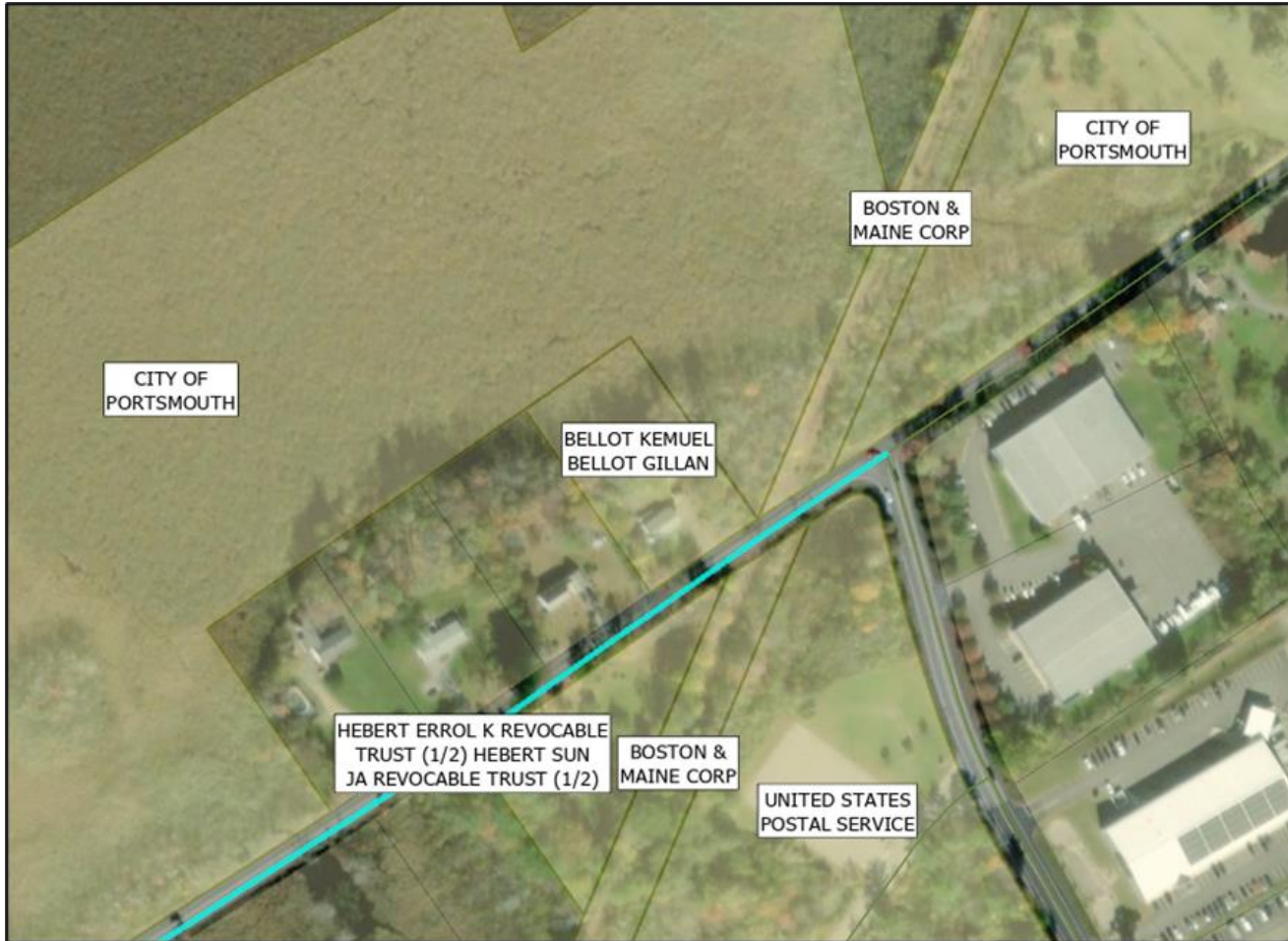
Adjacent public land: Yes

Neighborhood Proximity: Limited

Business Proximity: No

In plans: City Ped/Bike Plan

Crossings with Trailhead Parking Potential



Site: Banfield Road

City: Portsmouth

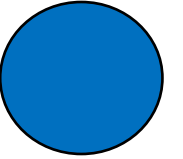
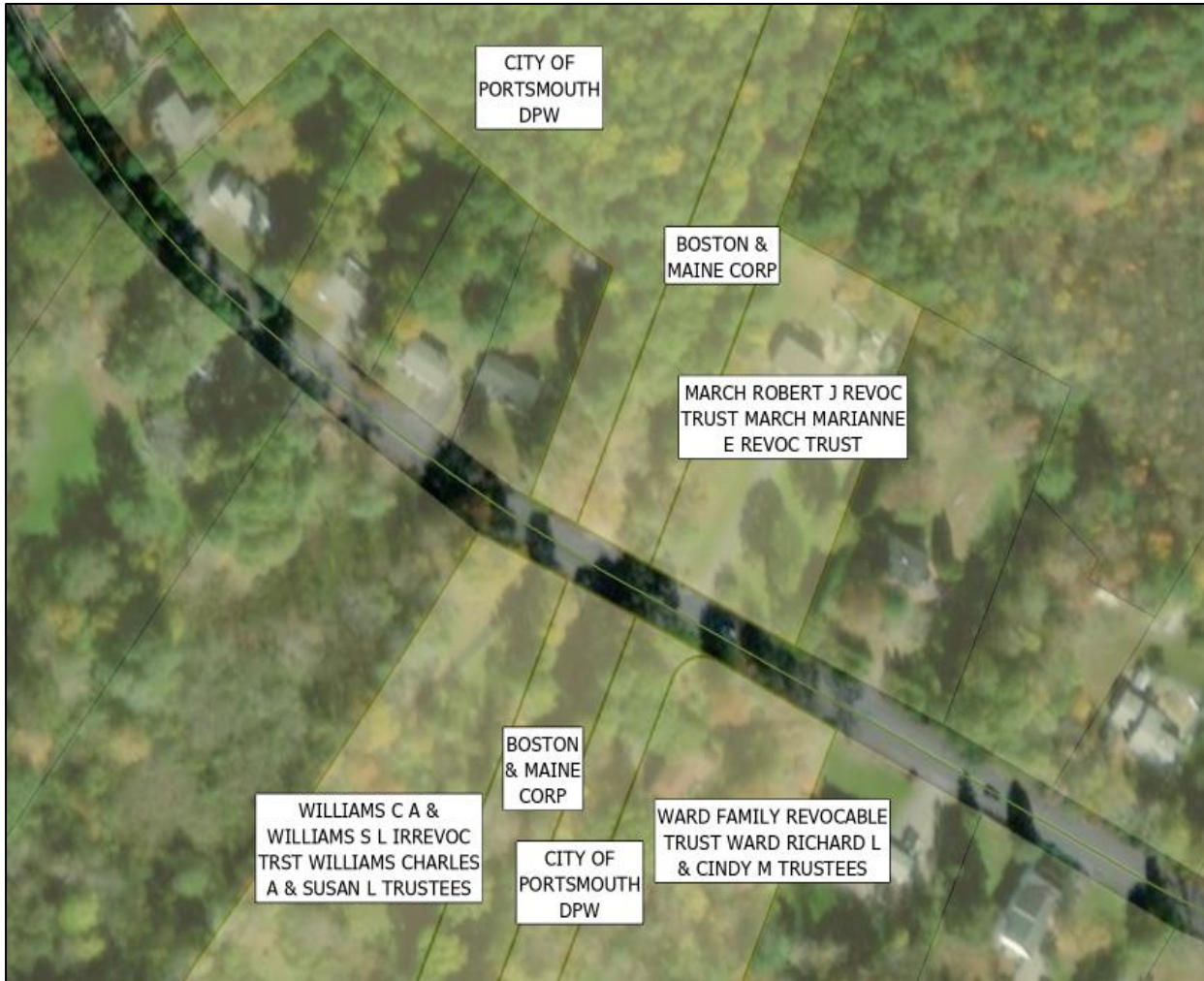
Adjacent public land: Yes

Neighborhood Proximity: Limited

Business Proximity: Industrial

In plans: City Ped/Bike Plan

Crossings with Trailhead Parking Potential



Site: Ocean Road

City: Portsmouth

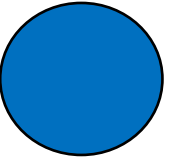
Adjacent public land: Yes

Neighborhood Proximity: Limited

Business Proximity: US1

In plans: City Ped/Bike Plan

Crossings with Trailhead Parking Potential



Site: Atlantic Avenue/NH111

Town: North Hampton

Adjacent public land: Yes

Neighborhood Proximity: Yes

Business Proximity: Yes

In plans: No

Parcel Custodians Kind of Date of
No. No. Instrument, Instrument.

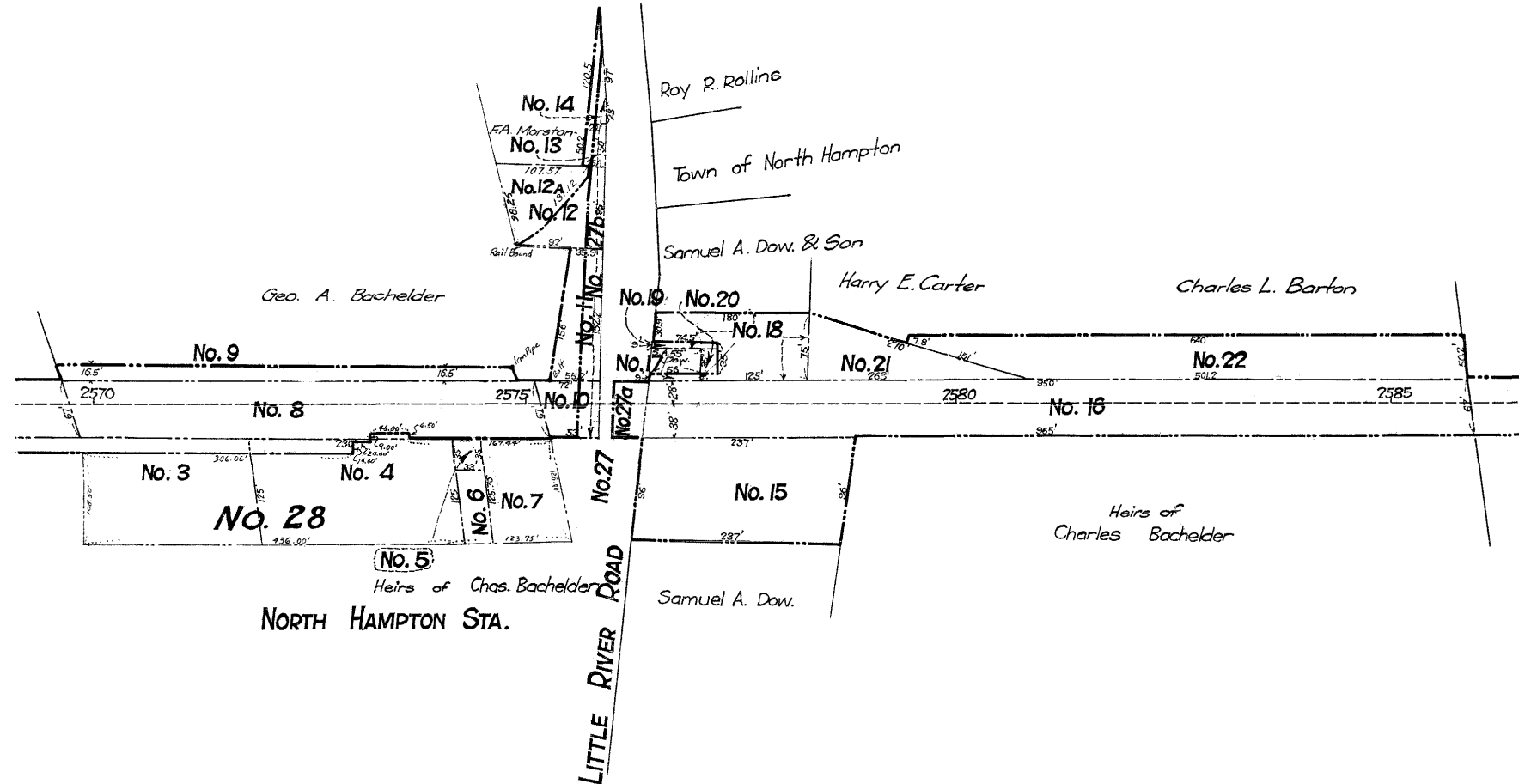
Grantor.

Grantee

Recorded
Rockingham County.
Book Page. Date

B&M Valuation Maps

15	D- 42-4	Locotion	Feb. 23. 1841.	John Leavitt.	E.R.R. in N.H.	Sec. of State	Feb. 25. 1841
16	E.N.H. 56	F. War	June 8. 1840.	Abraham Leavitt.	"	298 215	July 9. 1840
17	" 153	" "	Dec. 26. 1872	Jona P. Robinson, et al	"	543 284	Sept. 8. 1894.
18	E. 1939	" "	May 26. 1864.	" " "	E.R.R. Co.	403 354	June 11. 1864.
19	1488	" "	Nov. 4. 1899	B. & M. R.R.	Samuel A. Dow	571 332	Nov. 11. 1899.
20	2026	" "	Apr. 18. 1873	E.R.R. in N.H.	Jona P. Robinson et al	446. 64.	July 9. 1873
21	E. 1360	" "	May 26. 1864.	John Leavitt	E.R.R. Co.	403 353	June 11. 1864.
22	1481	" "	Nov. 27. 1899	Sarah A. Romick	B. & M. R.R.	573. 90.	Nov. 29. 1899



STATION MAP-LANDS

BOSTON AND MAINE R.R.

Operated by the
BOSTON AND MAINE R.R.

STATION 2558+45 TO STATION 2611+25

SCALE 1-IN=100 FT. JUNE 30, 1914

Office of Valuation Engineer.
Boston, Mass.

Crossings with Trailhead Parking Potential



Site: Lafayette Road/US1

Town: North Hampton/Hampton

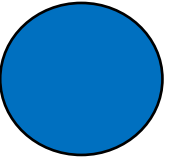
Adjacent public land: Yes

Neighborhood Proximity: Yes

Business Proximity: US1

In plans: No

Crossings with Trailhead Parking Potential



Site: US1/NH101 Interchange

Town: Hampton

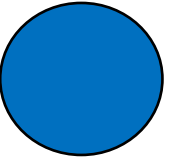
Adjacent public land: Yes

Neighborhood Proximity: Yes

Business Proximity: Yes

In plans: Regional

Crossings with Trailhead Parking Potential



Site: Depot Landing

Town: Hampton Falls

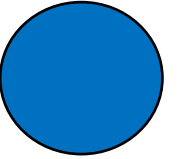
Adjacent public land: Yes

Neighborhood Proximity: Yes

Business Proximity: Yes

In plans: Existing

Crossings with Trailhead Parking Potential



Site: Library Crossing

Town: Seabrook

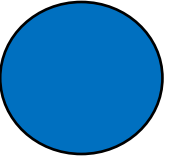
Adjacent public land: Yes

Neighborhood Proximity: Yes

Business Proximity: Yes

In plans: Existing

Crossings with Trailhead Parking Potential



Site: Collins Street

Town: Seabrook

Adjacent public land: Easement

Neighborhood Proximity: Yes

Business Proximity: No

In plans: Existing Seabrook-Salisbury Connector Trail trailhead

Next Steps with NHSG Development

- **Develop design concepts for trailheads with parking potential**
- **Input on Hampton-Portsmouth design process**
- **Incorporation of non-profit NH Seacoast Greenway Alliance**
- **Trail connection planning to adjacent neighborhoods**
- **Continued community outreach**
- **Trail volunteer and adopt-a-trail program development**
- **Signage plan development**
- **Private funding development**

Questions?

Scott Bogle
Rockingham Planning Commission
sbogle@therpc.org

