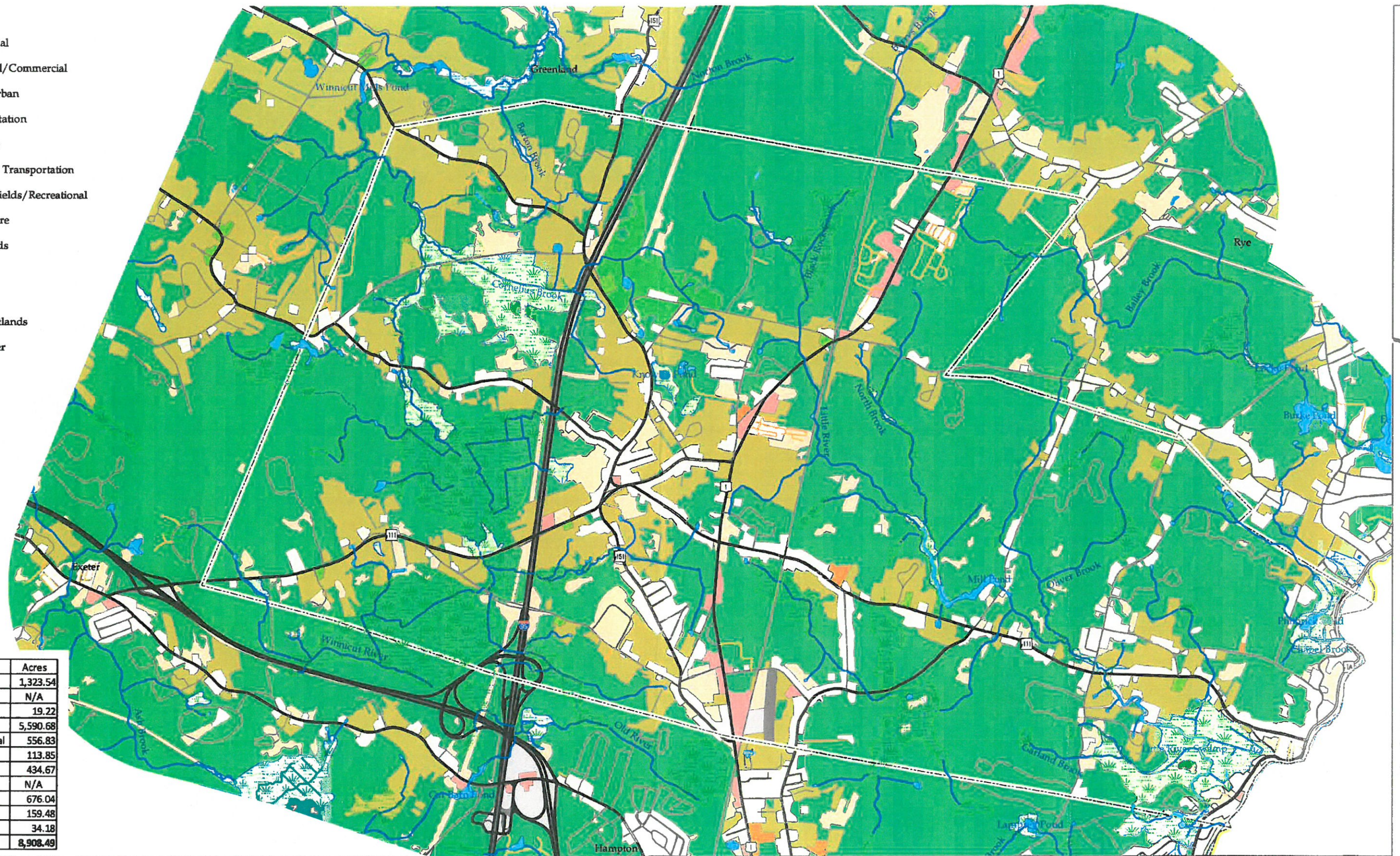


- Landuse**
- Residential
 - Industrial/Commercial
 - Mixed Urban
 - Transportation
 - Railroads
 - Auxiliary Transportation
 - Playing Fields/Recreational
 - Agriculture
 - Farmsteads
 - Forested
 - Water
 - Open Wetlands
 - Idle/Other

Landuse Type	Acres
Active Agricultural	1,323.54
Aux Transportation	N/A
Farmsteads	19.22
Forested	5,590.68
Industrial/Commercial	556.83
Mixed Urban	113.85
Open Wetlands	434.67
Other/Idle	N/A
Residential	676.04
Transportation	159.48
Water	34.18
Grand Total	8,908.49

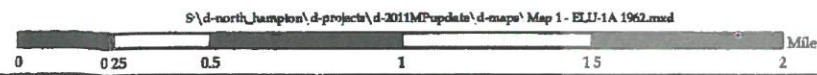


North Hampton Masterplan

- Waterbody**
- Lake / Pond
 - Reservoir
 - Wetland
 - Artificial Path
 - Other flow line
 - Stream / River

- NH DOT Roads (April 2010)**
- State
 - Local
 - Private
 - Not Maintained

North Hampton Town Boundary

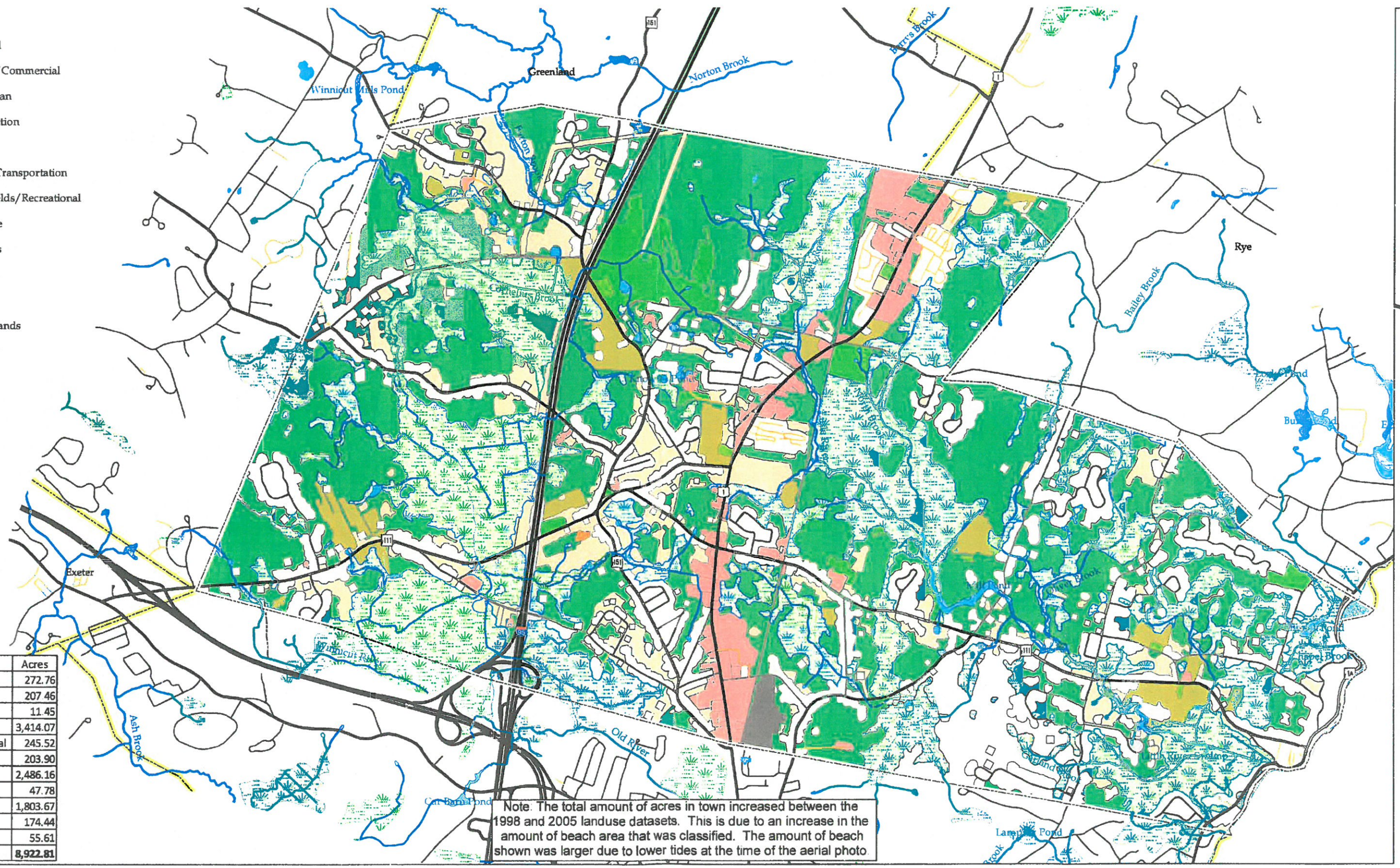


ELU Map 1a - 1962 Landuse



- Landuse**
- Residential
 - Industrial/Commercial
 - Mixed Urban
 - Transportation
 - Railroads
 - Auxiliary Transportation
 - Playing Fields/Recreational
 - Agriculture
 - Farmsteads
 - Forested
 - Water
 - Open Wetlands
 - Idle/Other

Landuse Type	Acres
Active Agricultural	272.76
Aux Transportation	207.46
Farmsteads	11.45
Forested	3,414.07
Industrial/Commercial	245.52
Mixed Urban	203.90
Open Wetlands	2,486.16
Other/Idle	47.78
Residential	1,803.67
Transportation	174.44
Water	55.61
Grand Total	8,922.81



Note: The total amount of acres in town increased between the 1998 and 2005 landuse datasets. This is due to an increase in the amount of beach area that was classified. The amount of beach shown was larger due to lower tides at the time of the aerial photo.

North Hampton Masterplan

- Waterbody**

 - Lake / Pond
 - Reservoir
 - Wetland
 - Artificial Path
 - Other flow line
 - Stream / River

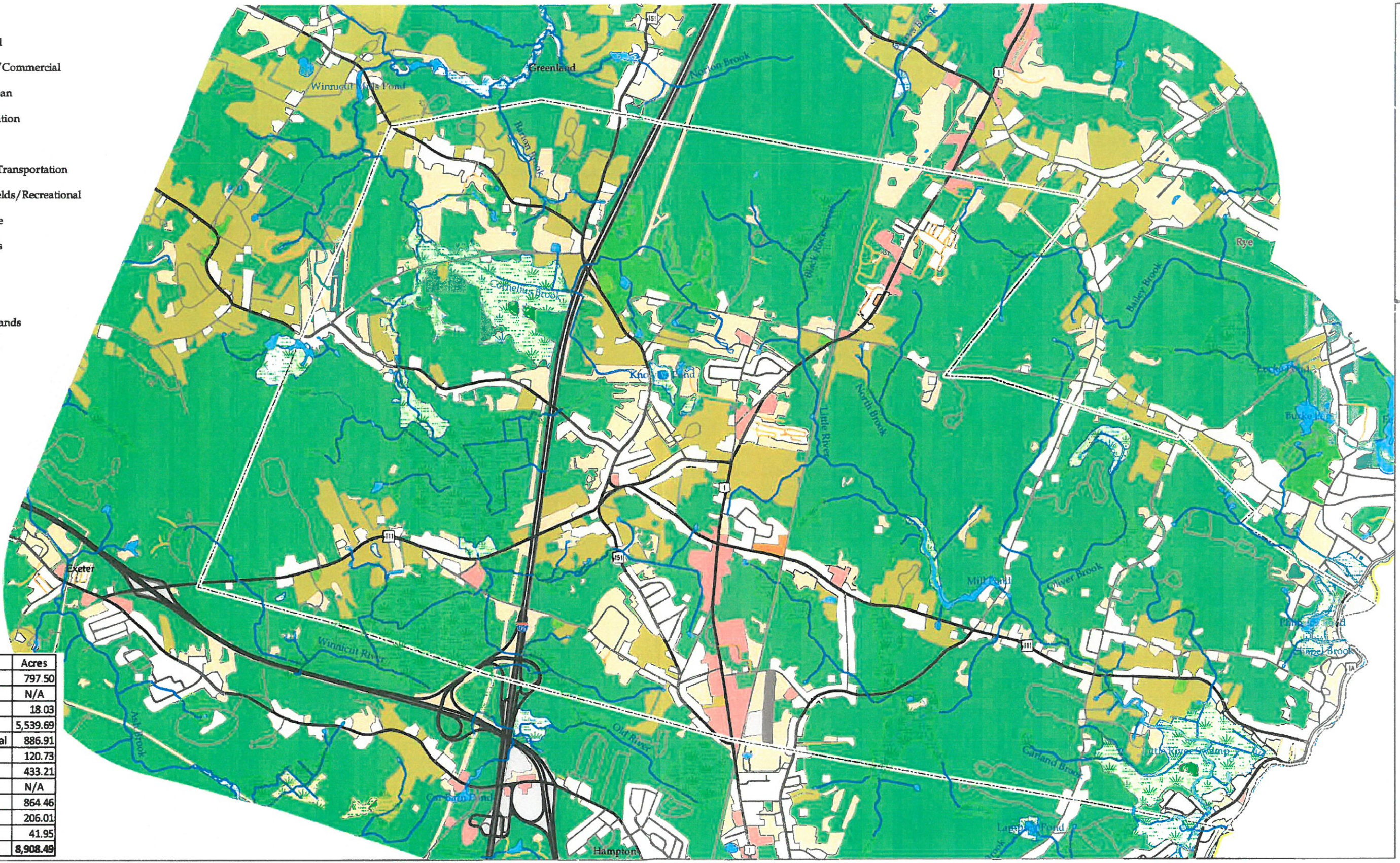
NH DOT Roads (April 2010)

 - State
 - Local
 - Private
 - Not Maintained

North Hampton Town Boundary

- Landuse**
- Residential
 - Industrial/Commercial
 - Mixed Urban
 - Transportation
 - Railroads
 - Auxiliary Transportation
 - Playing Fields/Recreational
 - Agriculture
 - Farmsteads
 - Forested
 - Water
 - Open Wetlands
 - Idle/Other

Landuse Type	Acres
Active Agricultural	797.50
Aux Transportation	N/A
Farmsteads	18.03
Forested	5,539.69
Industrial/Commercial	886.91
Mixed Urban	120.73
Open Wetlands	433.21
Other/Idle	N/A
Residential	864.46
Transportation	206.01
Water	41.95
Grand Total	8,908.49



North Hampton Masterplan

- Waterbody**
- Lake / Pond
 - Reservoir
 - Wetland
 - Artificial Path
 - Other flow line
 - Stream / River
- NH DOT Roads (April 2010)**
- State
 - Local
 - Private
 - Not Maintained
- North Hampton Town Boundary

0 0.25 0.5 1 1.5 2 Miles

9:\d-north_hampton\d-projects\d-2011MPupdate\d-maps\Map 1 - ELU-1b 1974.mxd

1998 Land Use North Hampton, NH

- Land Use**
- Residential
 - Commercial
 - Institutional
 - Industrial
 - Agricultural
 - Airport

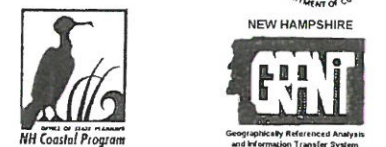
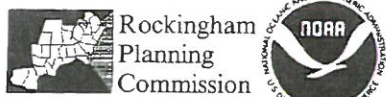
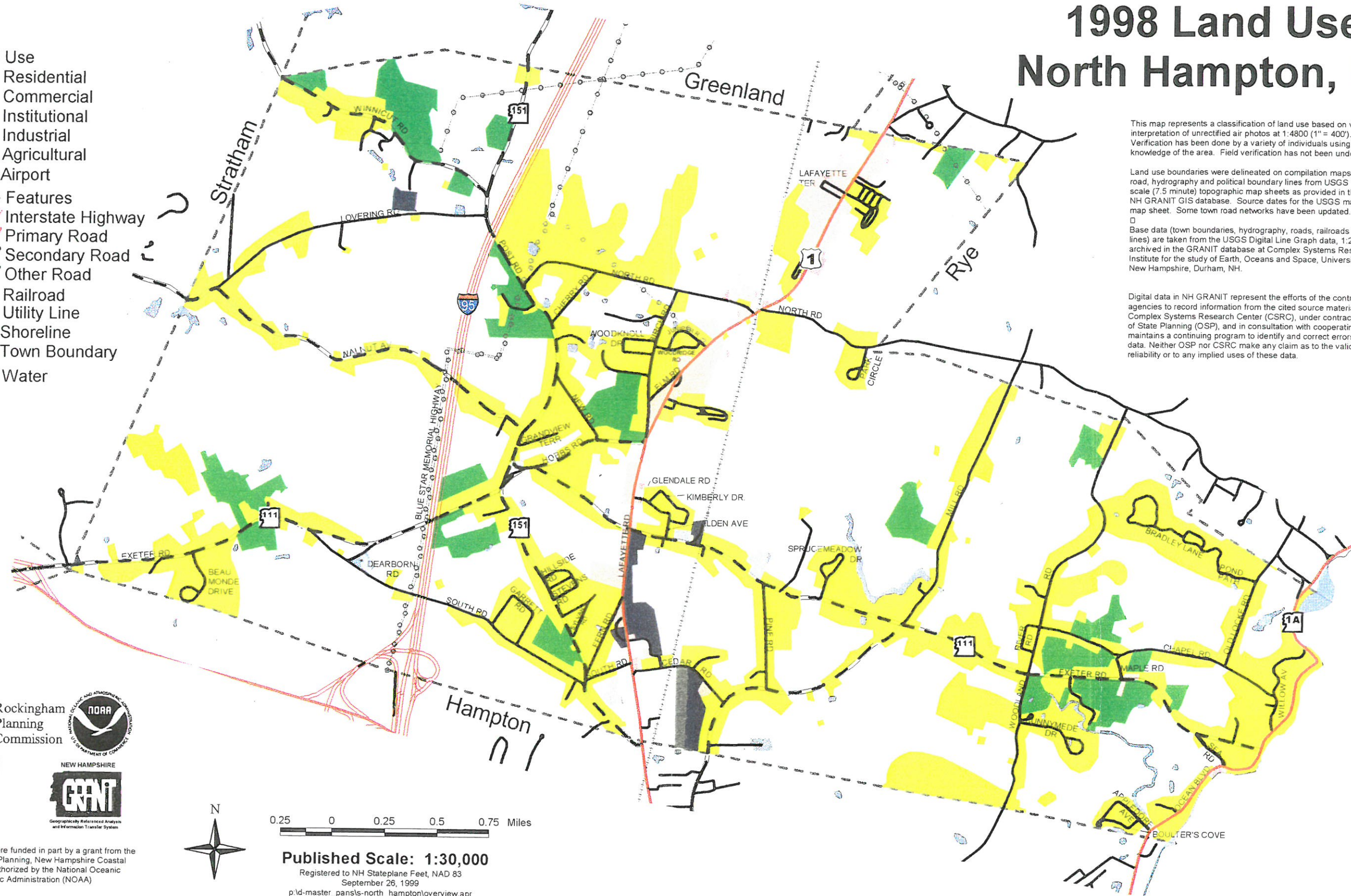
- Base Features**
- Interstate Highway
 - Primary Road
 - Secondary Road
 - Other Road
 - Railroad
 - Utility Line
 - Shoreline
 - Town Boundary
 - Water

This map represents a classification of land use based on visual interpretation of unrectified air photos at 1:4800 (1" = 400'). Verification has been done by a variety of individuals using local knowledge of the area. Field verification has not been undertaken.

Land use boundaries were delineated on compilation maps containing road, hydrography and political boundary lines from USGS 1:24000 scale (7.5 minute) topographic map sheets as provided in the NH GRANIT GIS database. Source dates for the USGS maps varies by map sheet. Some town road networks have been updated.

Base data (town boundaries, hydrography, roads, railroads and utility lines) are taken from the USGS Digital Line Graph data, 1:24,000, as archived in the GRANIT database at Complex Systems Research Center, Institute for the study of Earth, Oceans and Space, University of New Hampshire, Durham, NH.

Digital data in NH GRANIT represent the efforts of the contributing agencies to record information from the cited source materials. Complex Systems Research Center (CSRC), under contract to the Office of State Planning (OSP), and in consultation with cooperating agencies, maintains a continuing program to identify and correct errors in these data. Neither OSP nor CSRC make any claim as to the validity or reliability or to any implied uses of these data.



These maps were funded in part by a grant from the Office of State Planning, New Hampshire Coastal Program, as authorized by the National Oceanic and Atmospheric Administration (NOAA)



0.25 0 0.25 0.5 0.75 Miles

Published Scale: 1:30,000

Registered to NH Stateplane Feet, NAD 83

September 26, 1999

p:\d-master_pans\h-north_hampton\overview.apr




- Landuse**
- Residential
 - Industrial/Commercial
 - Mixed Urban
 - Transportation
 - Railroads
 - Auxiliary Transportation
 - Playing Fields/Recreational
 - Agriculture
 - Farmsteads
 - Forested
 - Water
 - Open Wetlands
 - Idle/Other

Landuse Type	Acres
Active Agricultural	270.84
Aux Transportation	207.46
Farmsteads	7.28
Forested	3,640.36
Industrial/Commercial	246.31
Mixed Urban	208.07
Open Wetlands	2,487.00
Other/Idle	43.54
Residential	1,581.90
Transportation	174.44
Water	55.61
Grand Total	8,922.81

Note: The total amount of acres in town increased between the 1998 and 2005 landuse datasets. This is due to an increase in the amount of beach area that was classified. The amount of beach shown was larger due to lower tides at the time of the aerial photo.

North Hampton Masterplan

- Waterbody**
- Lake / Pond
 - Reservoir
 - Wetland
 - Artificial Path
 - Other flow line
 - Stream / River
- NH DOT Roads (April 2010)**
- State
 - Local
 - Private
 - Not Maintained
- North Hampton Town Boundary



Scale bar: 0 0.25 0.5 1 1.5 2 Miles

Source: S:\d-north_hampton\d-projects\d-2011MPupdate\d-maps\Map 1 - ELU-1d 2005.mxd