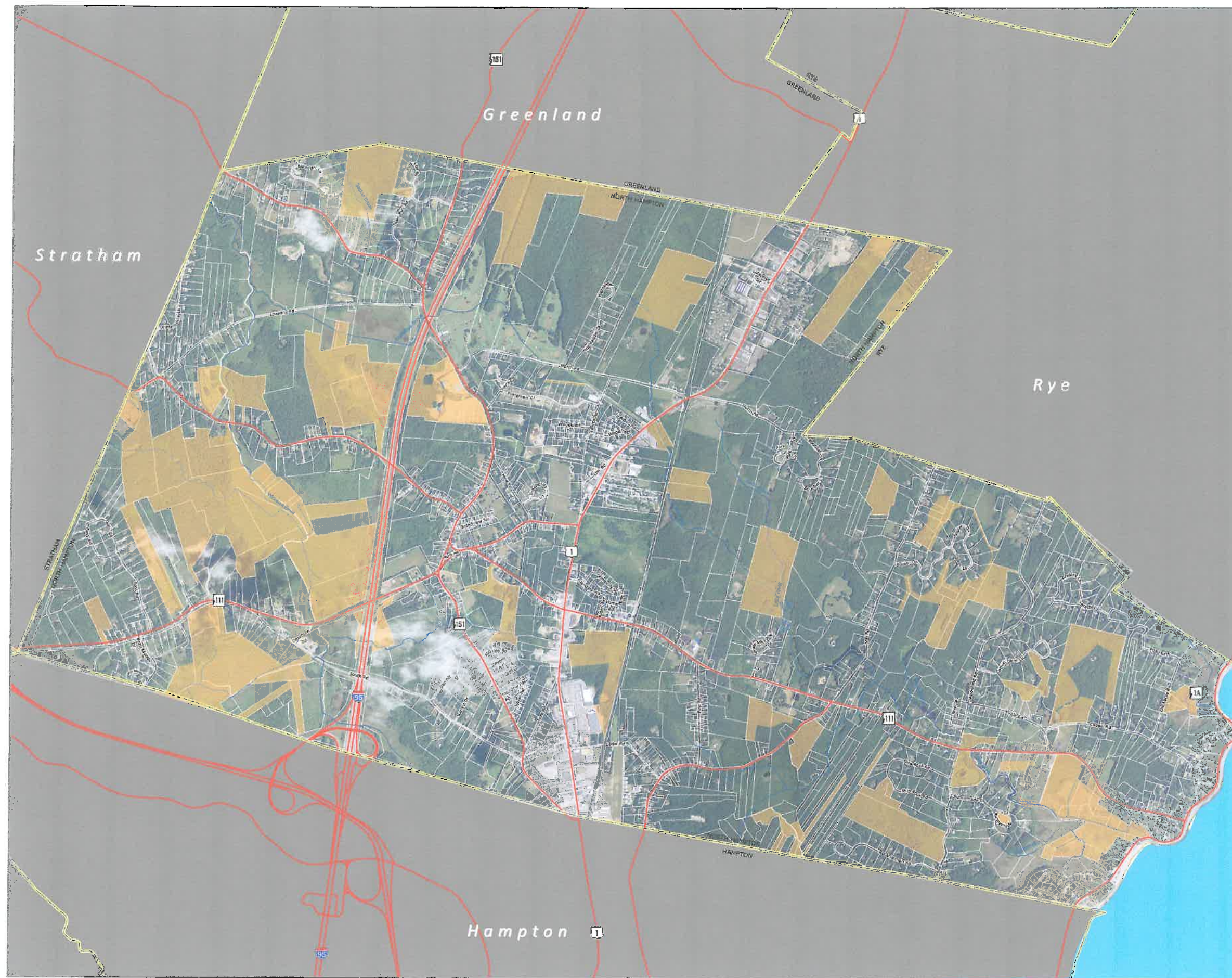





# North Hampton Conservation, Wetlands

June 2014



-  North Hampton Conservation Land (2014)
-  Rivers/Streams
-  2007 North Hampton Parcels
-  Town Boundaries
-  2012 Aerial Photo Base

This map is for planning purposes only. It should be noted the layers used on this map are from different scales. Parcel lines and wetland boundaries are approximations, and should not be used for site level planning.

**Note:** Protected parcels often have unprotected exclusion areas around homes and outbuildings (not shown on maps)

Parcels are supplied by James Verra and Assoc. and are updated to 2007, these parcels were converted to GIS by the RPC.

The US Fish and Wildlife Service National Wetlands Inventory is an ongoing effort to map and inventory the wetland areas within the United States. National Wetlands Inventory wetlands were automated by the US Fish and Wildlife Service, National Wetlands Inventory, and were distributed by GRANIT, Complex Systems Research Center. Map source scale 1:24,000.

Wetland soils are 'Very Poorly Drained' and 'Poorly Drained' soil types. Soil boundaries are from NRCS county soil surveys: Carroll County, published in 1977; Rockingham County, published in 1994; Strafford County, published in 1973. Soil unit boundaries that coincide with water body boundaries in the field will not always coincide on this map, due to their differing data sources. Information shown on this map is for planning purposes only. Precise depiction of wetland boundaries requires additional fieldwork.

Road data provided by New Hampshire DOT, and is updated yearly.

ROCKINGHAM  
PLANNING  
COMMISSION

NH  
GRANIT

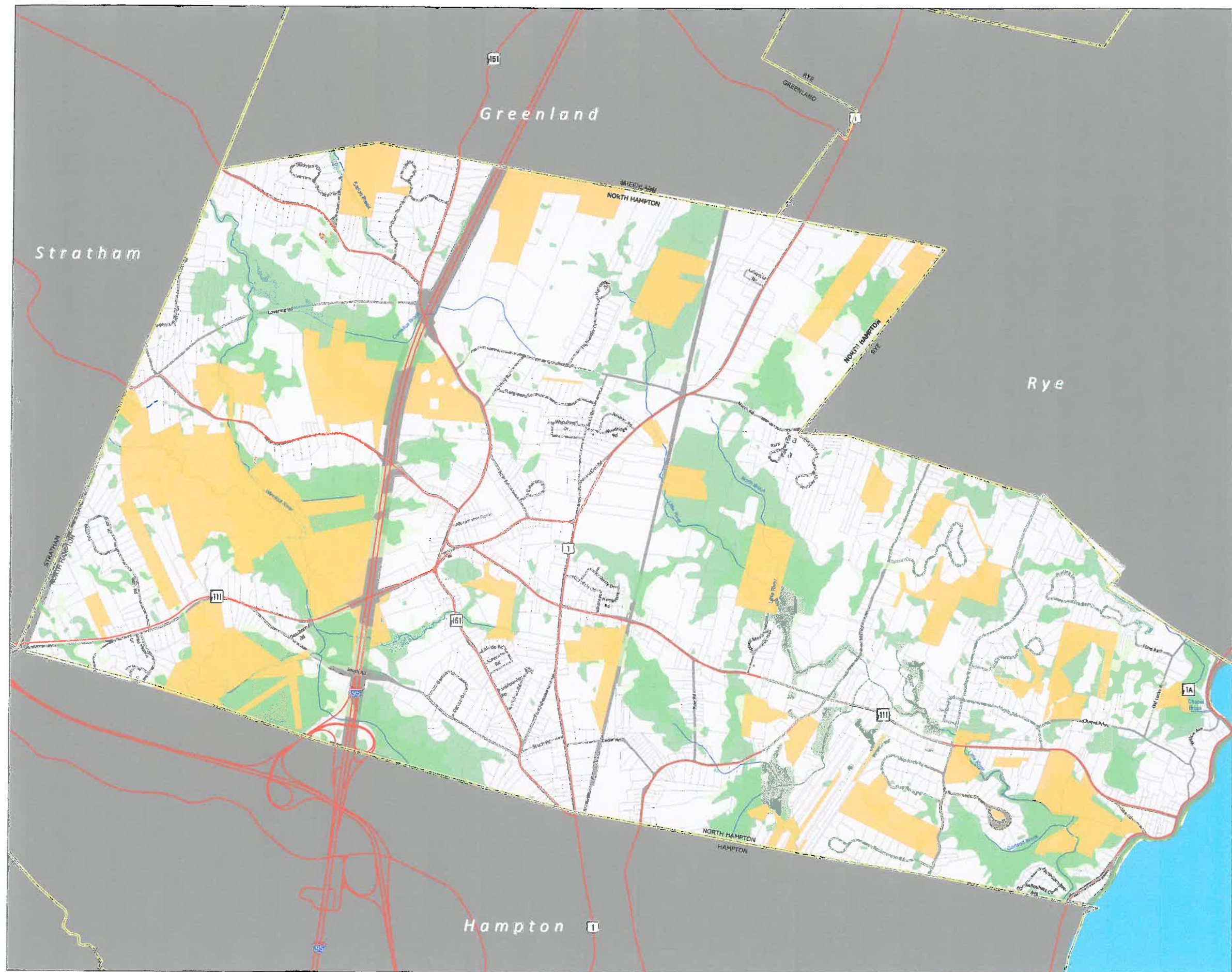
0 0.125 0.25 0.5 0.75 1 Miles

Document Path: S:\north\_hampton\le-map\Cons\_2014\_aerial.mxd



# North Hampton Conservation, Wetlands

June 2014



- North Hampton Conservation Land (2014)
- Rivers/Streams
- National Wetlands Inventory
- Very Poorly Drained Soils
- 2007 North Hampton Parcels
- Town Boundaries

This map is for planning purposes only. It should be noted the layers used on this map are from different scales. Parcel lines and wetland boundaries are approximations, and should not be used for site level planning.

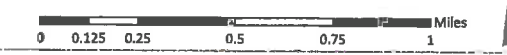
**Note:** Protected parcels often have unprotected exclusion areas around homes and outbuildings (not shown on maps)

Parcels are supplied by James Verra and Assoc. and are updated to 2007, these parcels were converted to GIS by the RPC.

The US Fish and Wildlife Service National Wetlands Inventory is an ongoing effort to map and inventory the wetland areas within the United States. National Wetlands Inventory wetlands were automated by the US Fish and Wildlife Service, National Wetlands Inventory, and were distributed by GRANIT, Complex Systems Research Center. Map source scale 1:24,000.

Wetland soils are 'Very Poorly Drained' and 'Poorly Drained' soil types. Soil boundaries are from NRCS county soil surveys: Carroll County, published in 1977; Rockingham County, published in 1994; Strafford County, published in 1973. Soil unit boundaries that coincide with water body boundaries in the field will not always coincide on this map, due to their differing data sources. Information shown on this map is for planning purposes only. Precise depiction of wetland boundaries requires additional fieldwork.

Road data provided by New Hampshire DOT, and is updated yearly.



Document Path: S:\p-north\_hampton\maps\Cons\_land\_2014.mxd